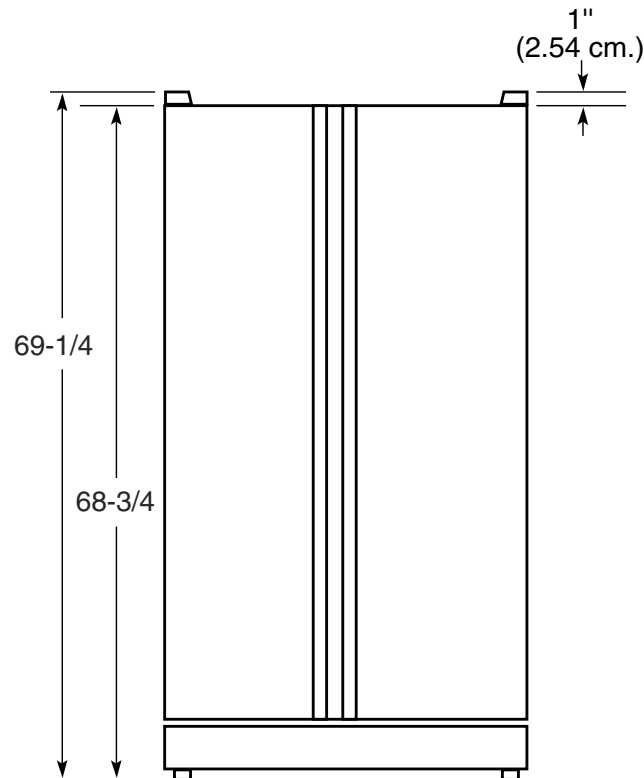
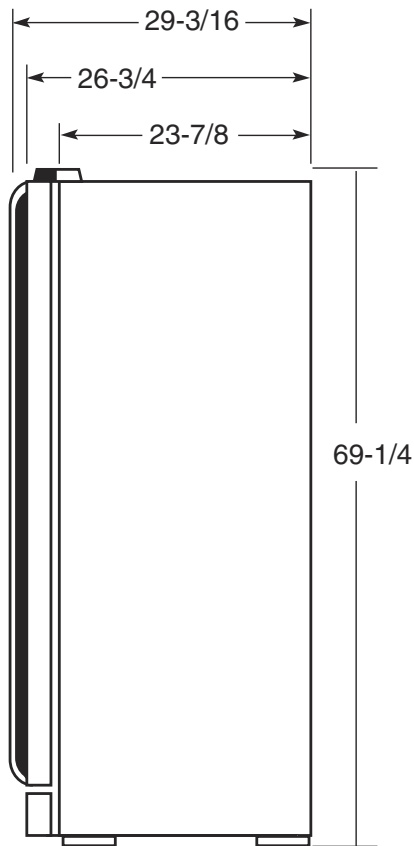




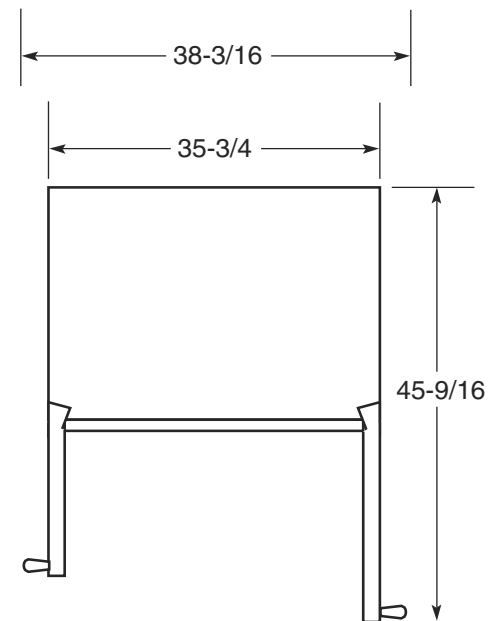
Profile™

PSC23SGR – GE Profile Arctica CustomStyle™ 22.6 Cu. Ft. Stainless Side-by-Side Refrigerator with Dispenser

Case Dimensions (in inches/cm.)



Front View



Top View

Specification Revised 7/05

210213



Total volume and shelf area are calculated by the Association of Home Appliance Manufacturers' standards.



Listed by
Underwriters
Laboratories



For answers to your Monogram®, GE Profile™ or GE® appliance questions, visit our website at GEAppliances.com or call GE Answer Center® service, 800.626.2000.



Profile™

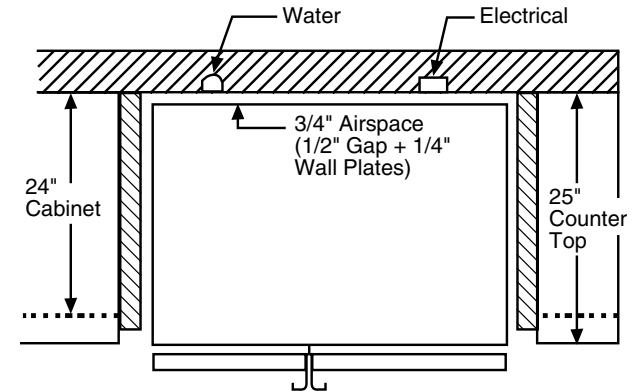
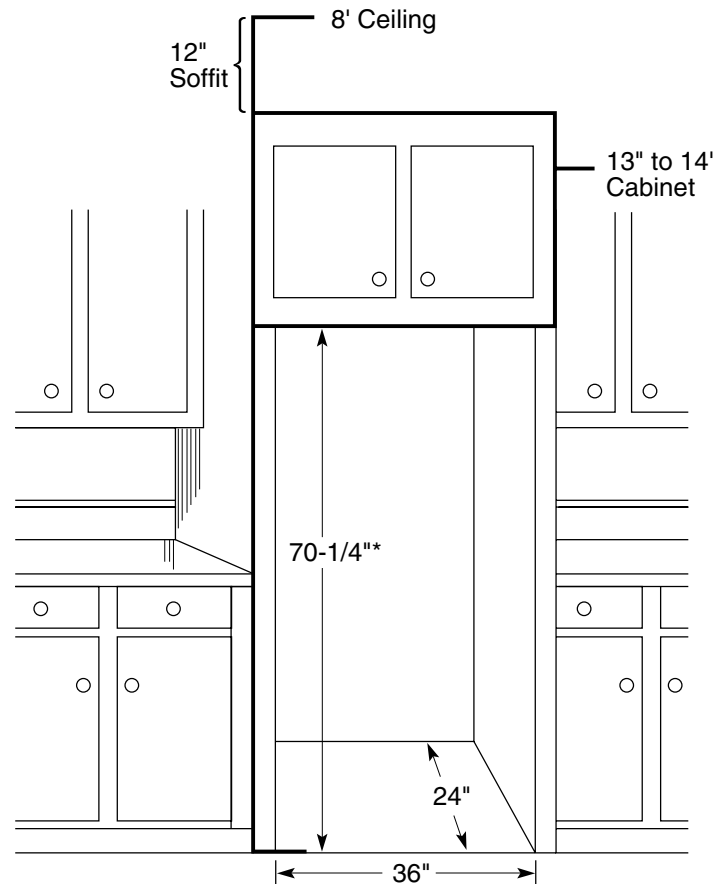
PSC23SGR – GE Profile Arctica CustomStyle™ 22.6 Cu. Ft. Stainless Side-by-Side Refrigerator with Dispenser

Rough-In Dimensions

Standard, New Construction and Replacement Installation

Installation Tips to Maximize the Built-In Look

- All wall/floor molding should be removed prior to installation.
- Water recess on rear wall recommended to prevent water line damage. 48" minimum length, 1/4" diameter water line tubing recommended.
- When possible, recess both copper water line and electrical outlet.
- (See local codes)
- Front and rear leveling legs are adjustable for the built-in look.
- (See owner's manual)
- If optional collar trim kit is to be used or anticipated, see collar trim installation on next page for different rough-in dimensions.



*The rough-in dimension of 70-1/4" is minimum and is measured from the finished floor to top of opening (or the underside of the overhead cabinets). For Models with Trim Kit: If frameless style cabinets are planned for above the refrigerator, you may need to consider adding a maximum of 1/4" (70-1/2") to height of opening to allow additional clearance between cabinet doors and top of refrigerator trim when cabinet doors are in open position.



Total volume and shelf area are calculated by the Association of Home Appliance Manufacturers' standards.



Listed by Underwriters Laboratories

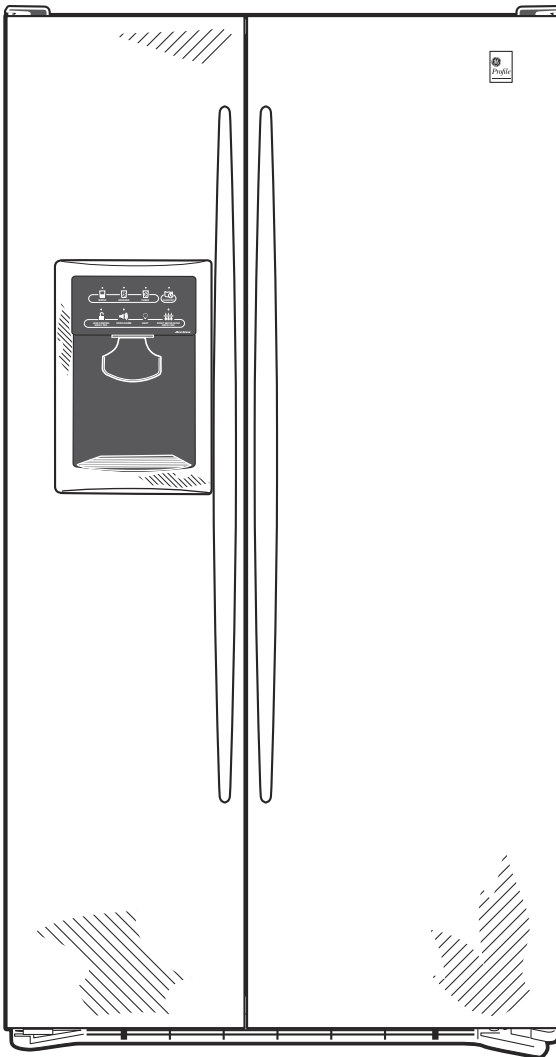


For answers to your Monogram®, GE Profile™ or GE® appliance questions, visit our website at GEAppliances.com or call GE Answer Center® service, 800.626.2000.



Profile™

PSC23SGR – GE Profile Arctica CustomStyle™ 22.6 Cu. Ft. Stainless Side-by-Side Refrigerator with Dispenser



Features and Benefits

- CustomStyle™ Configuration – Offers a built-in look without the built-in expense
- Stainless Steel – Conveys a look of utmost polish and sophistication
- CustomCool™ Technology With Full Extension Slides – Chills in minutes, thaws in hours and keeps foods fresher, longer
- ClimateKeeper™ system – Best Temperature Management System you can buy
- Upfront Electronic Digital Display – Clearly displays exact temperatures for the fresh food and freezer compartments
- Integrated Ice™ System – Frees up valuable freezer space. It tilts down, providing easy access to bulk ice
- LightTouch!™ tall dispenser with child lock and door alarm – Delivers chilled water, cubed ice or crushed ice at the slightest touch
- Slide 'n Store™ Full-Extension Freezer Basket – Extends 12" to 16" beyond the cabinet, providing easy access to contents
- FrostGuard™ technology – Reduces freezer burn, so foods retain their texture and flavor
- Model PSC23SGRSS – Stainless steel

Specification Revised 7/05

210213