

20280B



GE SmartWater™ Softening Systems

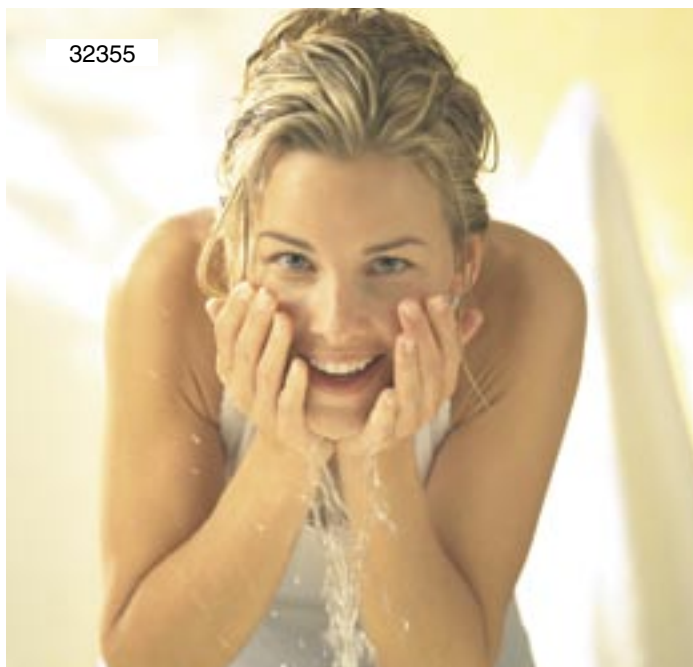


imagination at work

GE SmartWater™ Softening Systems

Choosing the right water softener will let you see a difference in your home.

Softened water is good for you and your home. Not only will you notice how much better softened water feels on your skin, you'll also notice that soft water gets your dishes cleaner, makes your laundry softer and brighter with less detergent and helps your showers, sinks and tubs stay cleaner longer. With a high-efficiency GE SmartWater softener, you can be assured of only using enough salt and water to meet your demands, and no more. Whichever GE SmartWater softener you choose, you'll notice immediate improvements throughout your home!



32355

Soft water leaves your skin feeling noticeably softer and smoother.



20345

Towels are 45% whiter using 1/3 less detergent. Clothes are softer, cleaner and last longer.



35238

*Soft water results in less hard water scale build-up in water heaters and up to 25% less energy consumption.**



20279

Dishes are cleaner, with less soap and hard water spotting.

*Per research conducted by the Water Quality Research Council and Water Quality Association.

31838



GNSH45E

- **45,100-grain super capacity**
- Advanced electronic water management system with status indicator light and salt level monitor
- Super high-flow valve suitable for homes with up to 1-1/4" plumbing
- 200-pound salt storage tank
- **Clear-water iron removal, up to 10 ppm**

GXSH39E

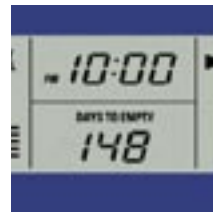
- **39,000-grain extra-large capacity**
- Advanced electronic water management system with status indicator light and salt level monitor
- Super high-flow valve suitable for homes with up to 1-1/4" plumbing
- 200-pound salt storage tank
- **Clear-water iron removal, up to 8 ppm**

GXSF30H

- **30,200-grain super capacity**
- High-flow valve suitable for homes with up to 1" plumbing
- 200-pound salt storage tank
- **Clear-water iron removal, up to 7 ppm**



Models GNSH45E and GXSH39E



Only GE has it!

"Days-to-empty" feature

Easy to use—simply enter the time of day, hardness and salt level into the control panel and the softener does the rest. The status light will let you know if the softener needs attention.

SmartWater™ Softening Systems

	GE SmartWater		
	GNSH45E	GXSH39E	GXSF30H
Capacity			
Capacity (grains)	45100*	39000*	30200*
Features			
Efficiency (grains per lb.-salt)	5120**	5100**	5120**
Maximum hardness removal (gpg)	160	110	95
Maximum clear water iron reduction (ppm)	10	8	7
Resin filter type	Std. mesh	Std. mesh	Std. mesh
Resin quantity (cu. ft.)	1.23	1.07	0.78
Resin tank size (in.)	10 x 40	9 x 40	8 x 40
Salt capacity (lbs.)	200	200	200
Regeneration time (min.)	Approx. 118	Approx. 118	Approx. 118
Service flow rate (at 15 psi drop)	9.5	10	7.5
Installation pack	•	•	•
Permanent settings memory	•	•	•
Electronic controls	•	•	•
Days to empty indicator	•	•	•
Low salt indicator	•	•	•
Status light indicator	•	•	•
Audible alarm	•	•	•
Systems monitor	•	•	•
Valve size	Super high-flow	Super high-flow	High-flow
Plumbing connections	Up to 1-1/4"	Up to 1-1/4"	Up to 1"
Appearance			
Style	Sculpted	Sculpted	Sculpted
Unit color	Light grey	Light grey	Light grey
Electronic demand driven	•	•	•
Weights & Dimensions			
Approx. ship. wt. (lbs.)	114	100	80
Overall W x H x D (in.)	19 x 48 x 17.5	19 x 48 x 17.5	19 x 48 x 17.5
Power/Ratings			
Electronic rating	24V, 60Hz	24V, 60Hz	24V, 60Hz

*GNSH45E-test protocol @ 17.0 lbs. of salt. GXSH39E-test protocol @ 14.7 lbs. of salt. GXSF30H-test protocol @ 12.4 lbs. of salt.

**GNSH45E-test protocol @ 2.6 lbs. of salt. GXSH39E-test protocol @ 2.3 lbs. of salt. GXSF30H-test protocol @ 2.3 lbs. of salt.

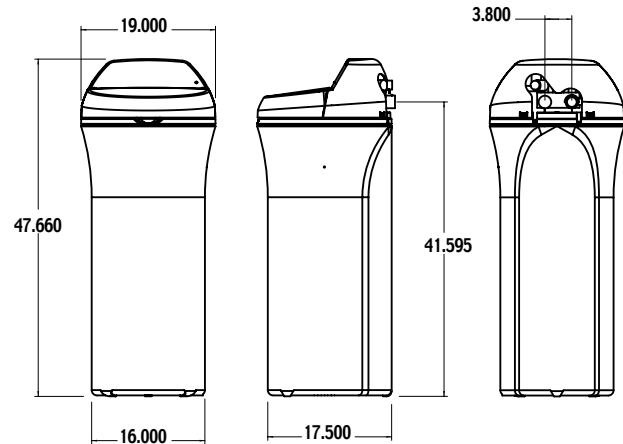
Important: All units must be installed according to local codes.

Note: Before installing, see installation instructions packed with product for complete details, or call GE QuickSpecs 800-432-3729.

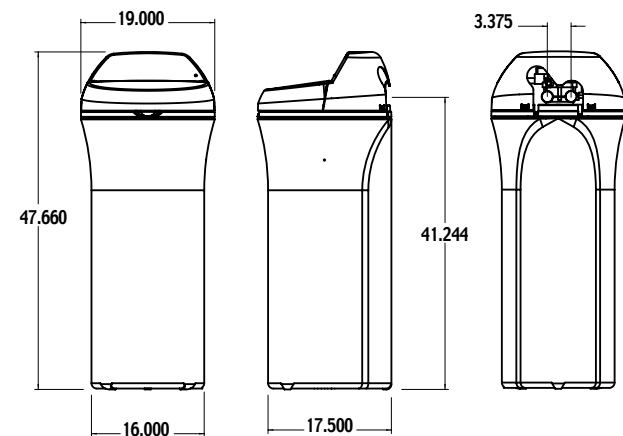


GNSH45E, GXSH39E and GXSF30H conform to NSF/ANSI 44 for specifically claimed performance.

Models GNSH45E and GXSH39E Installation Information (in inches)



Model GXSF30H Installation Information (in inches)



A Century of Quality and Innovation

For more than a century, GE has been committed to producing innovative products that change the way people live. The result of thorough research and rigorous testing, GE appliances are designed for years of dependable performance. Today, the GE tradition of quality and innovation continues.

GE Consumer & Industrial
 Appliances
 General Electric Company
 Louisville, KY 40225
 ge.com