

SPACEMAKER® & WALL OVEN MICROWAVES

*Bigger, Brighter and Better than Ever*



*We bring good things to life.*

## The Original Spacemaker®



Since its introduction in 1979, the GE

Spacemaker microwave oven has been an indispensable part of the American kitchen.

Today, its role is **bigger** than ever.

With roomy interiors and multiple baking

racks, our **award-winning**

microwave ovens hold up to six full-sized

plates of food. They're not only bigger—

they're also **better**. Spacemaker

microwave ovens deliver **1100 watts** of

constant cooking power for even, flavorful

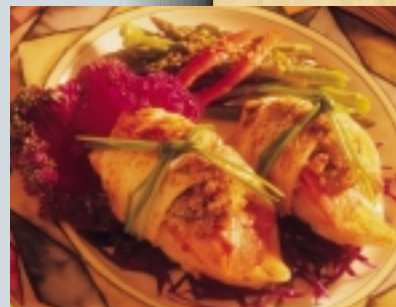
results. These ovens also feature improved

vortex venting, as well as **brighter**

interior and halogen cooktop lighting.

### **Exclusive CircuWave™ 1100 cooking system**

New CircuWave system delivers 1100 watts of output power to provide a more even distribution of heat, minimizing cold spots. It's our most powerful microwave cooking system, ever!



### **Quick Defrost**

Convenient setting lets you thaw a pound of ground meat up to 50% faster than our previous models. What used to take 6 1/2 minutes now defrosts in just 3 minutes.



### **GE innovation, space-saving design**

With so many convenient features and capabilities, it is easy to see why people are making GE Spacemaker their microwave of choice. Ideal as a second oven, these microwaves complete your cooking center.







*JVM1860BF  
Spacemaker microwave oven*

# GE Profile Spacemaker® Ovens with Convection/Microwave Cooking

**These models include** • Combination convection/microwave cooking • Sensor cooking controls • Multiple combination cooking levels • SmartControl system with interactive display • Stainless steel interior • Auto/Time Defrost • Convection rack • Powerful two-speed venting

**Note: bold = feature upgrade from previous model**



The JVM1490 preheats faster than ever before with advanced cooking technology.



User-friendly controls give you access to a variety of programmable options, and the two-line scrolling display guides you through the cooking process.



Convection cooking combined with microwave power (Fast Bake), for cooking results up to 25% faster than conventional ovens.



Convection cooking (Bake) provides a browned, crisp exterior and moist interior.



## *GE Profile Spacemaker Oven*

### **JVM1490SD** Stainless steel

- 1.4 cu. ft. cavity • 900 watts\* • **Fast Bake** • **Bake** • **Fast Defrost** • **Halogen interior lighting**
- **Halogen cooktop lighting** • **Two-line scrolling display** • **Turntable** • **Easy-to-use dial control**
- **Bilingual display (English/Spanish)**



**JVM1490WD** White on white (not shown)  
**JVM1490CD** Bisque on bisque (not shown)  
**JVM1490BD** Black on black (not shown)



## *GE Profile Spacemaker Oven*

### **JVM1190WY** White on white

- 1.1 cu. ft. cavity • 825 watts\* • **Combination bake Hi/Lo**
- **Convection broil**



**JVM1190SY** Stainless steel (not shown)  
**JVM1190BY** Black on black (not shown)

\*IEC-705 Test Procedure

Not all features available on all models.

## GE Profile™ Wall Oven with Convection/Microwave Cooking

**This model includes** • 1.0 cu. ft. cavity • 800 watts\* • Convection cooking • Combination roast (probe) • Combination convection/microwave cooking • Sensor cooking controls • Express Cook



Convection cooking produces golden brown exteriors and moist interiors.



Shown in 30" width

**GE Profile**  
30" or 27" Convection Microwave  
Wall Oven

**JEB1095SB** Stainless steel

**JEB1095WB** White on white (not shown)

**JEB1095CB** Bisque on bisque (not shown)

**JEB1095BB** Black on black (not shown)

Convection/Microwave Wall Ovens provide a true built-in appearance. JEB1095 will fit a 27" or 30" cutout. A trim kit (included with all models) enables the unit to be adapted to a 30" width. Available in stainless steel, classic white, bisque and black.

## GE Profile 36" Spacemaker® Microwave Oven with Sensor Cooking

**This model includes** • 1.8 cu. ft. cavity • 1100 watts\* • CircuWave™ 1100 cooking system • **36" width application** • Sensor cooking controls • **Hidden vent for sleek appearance** • Large 14-1/4" recessed turntable • Turntable On/Off • Bright view interior with halogen lamp • Halogen cooktop lighting • Auto, Time and Quick Defrost • Add 30 seconds • Instant On controls • Bilingual display (English/Spanish) • Two-line scrolling display • **Powerful three-speed plus boost 300-CFM 36" vortex venting** • Removable rack • Easy mount installation

Note: bold = feature upgrade from previous model



Sensor controls take the guesswork out of cooking.



**GE Profile**  
36" Spacemaker

**JVM3660SF**

Stainless steel

**JVM3660BF**

Black on black

(control panel shown)

**JVM3660WF**

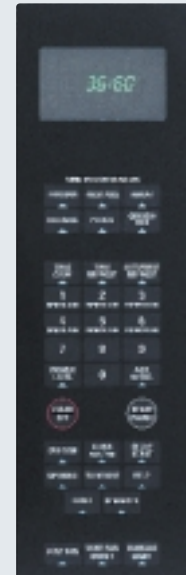
White on white

(not shown)

**JVM3660CF**

Bisque on bisque

(not shown)



\*IEC-705 Test Procedure

Not all features available on all models.

Available April 2002



# GE Profile™ and GE Spacemaker® XL1800 Microwave Ovens

**These models include** • CircuWave™ 1100 cooking system • Large 14-1/4" recessed turntable • **Auto, Time and Quick Defrost** • Add 30 seconds • Instant On controls • **Beeper volume control** • **Bilingual display (English/Spanish)** • **Two-line scrolling display** • **Big view window** • Powerful three-speed plus boost 300-CFM vortex venting • Easy mount installation • Turntable On/Off

**Note: bold = feature upgrade from previous model**



Six-plate capacity with two racks and recessed turntable, holds up to six dinner plates or three 9" x 13" casserole dishes.



Sensor controls take the guesswork out of cooking.



Quick Defrost lets you thaw a pound of ground meat up to 50% faster than our previous models.



Available April 2002

## GE Profile Spacemaker Sensor Oven

**JVM1860BF** Black on black

• 1.8 cu. ft. cavity • 1100 watts\* • **Hidden vent for sleek appearance** • Sensor cooking controls • **Halogen cooktop lighting** • **Two racks—6-dinner-plate capacity**



**JVM1860WF**

White on white  
(control panel shown)

**JVM1860SF**

Stainless steel  
(not shown)

**JVM1861SF**

Stainless steel  
(not shown)

• Non-vented model

**JVM1860CF**

Bisque on bisque  
(not shown)



Available April 2002

## GE Spacemaker Sensor Oven

**JVM1850WF** White on white

• 1.8 cu. ft. cavity • 1100 watts\* • **Sensor cooking controls** • **Removable rack, two positions**



**JVM1850BF**

Black on black  
(control panel shown)

**JVM1851BF**

Black on black  
(not shown)

• Non-vented model

**JVM1851WF**

White on white  
(not shown)

• Non-vented model

**JVM1850CF**

Bisque on bisque  
(not shown)

**JVM1851CF**

Bisque on bisque  
(not shown)

• Non-vented model

\*IEC-705 Test Procedure

Not all features available on all models.



Convenience cooking controls allow you to defrost, cook or reheat at the touch of a pad.



GE  
Spacemaker Convenience Oven

Available April 2002

**JVM1840BF** Black on black

• 1.8 cu. ft. cavity • 1100 watts\* • Full-view cooktop lighting • Convenience cooking controls • Removable rack



**JVM1840WF**

White on white  
(control panel shown)

**JVM1840CF**

Bisque on bisque  
(not shown)

## GE Spacemaker Microwave Oven with Sensor/Convenience Cooking

***This model includes*** • 1.6 cu. ft. cavity • 1000 watts\* • CircuWave cooking system • **Sensor cooking controls** • Convenience cooking controls • **Turntable On/Off** • Auto/Time Defrost • Help pad • Add 30 seconds • Full-view cooktop lighting • Removable rack • Powerful 300-CFM venting • Easy mount installation

**Note: bold = feature upgrade from previous model**



Sensor controls take the guesswork out of cooking.



This powerful 300-CFM-rated venting system will remove smoke and steam from your cooktop.



GE  
Spacemaker Sensor/Convenience Oven

**JVM1650WB** White on white



**JVM1650SB**

Stainless steel  
(not shown)

**JVM1650CB**

Bisque on bisque  
(not shown)

**JVM1650BB**

Black on black  
(not shown)

\*IEC-705 Test Procedure

Not all features available on all models.

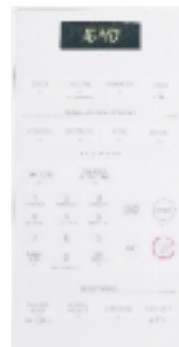
# GE Spacemaker® Microwave Ovens

**These models include** • SmartControl System with interactive display • Convenience cooking controls • Delay Start • Reminder • Auto/Time Defrost • Express Cook • Add 30 seconds • Instant On controls • Timer On/Off • Full-view cooktop lighting • Easy mount installation • Powerful 300-CFM exhaust fan

**Note: bold = feature upgrade from previous model**



Auto Defrost option automatically sets time and power level for fast defrosting.



**JVM1640AB**  
Almond on almond  
(not shown)  
**JVM1640BB**  
Black on black  
(not shown)



Convenience cooking controls allow you to defrost, cook or reheat at the touch of a pad.

GE  
Spacemaker Convenience Oven

**JVM1640WB** White on white  
• 1.6 cu. ft. oven cavity • 1000 watts\* • CircuWave™ cooking system  
• Turntable On/Off • Beeper volume control • Removable rack



**JVM1440BD**  
Black on black  
(not shown)



Add 30 seconds extends cooking time without the hassle of reprogramming.

GE  
Spacemaker Convenience Oven

**JVM1440WD** White on white  
• 1.4 cu. ft. oven cavity • 950 watts\* • CircuWave cooking system  
• Turntable On/Off • Removable rack



This powerful 300-CFM-rated venting system will remove smoke and steam from your cooktop.

\*IEC-705 Test Procedure

Not all features available on all models.

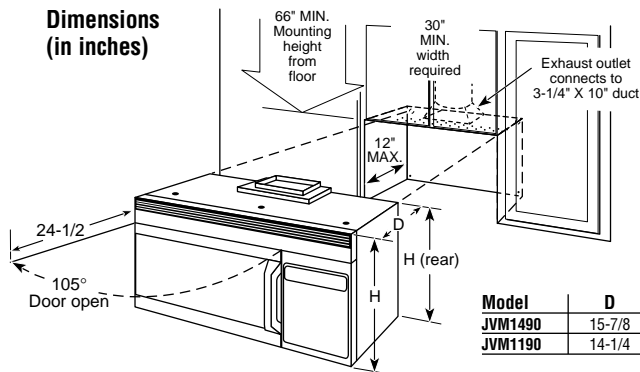


# Spacemaker Convection/Microwave Ovens

	GE Profile™	
	JVM1490SD JVM1490WD JVM1490CD JVM1490BD	JVM1190SY JVM1190WY JVM1190BY
<b>Capacity</b>		
Oven cavity (cu. ft.)	1.4	1.1
<b>Features</b>		
Watts (IEC-705 test procedure)	900	825
Controls	Membrane/Dial	Electronic Touch
SmartControl system w/interactive display	●	●
Electronic scrolling digital display w/clock and AM/PM	2 Lines	1 Line
Variable scroll speed	●	●
Help pad	●	●
Concurrent programming	●	●
Display On/Off	●	●
Bilingual display (English/Spanish)	●	
Cavity lighting	Halogen	Incandescent
Cooktop lighting	Halogen	Incandescent
<b>Sensor controls</b>		
Cook	Chicken, Fish, Potato	
Beverage	●	●
Popcorn	●	●
Reheat	●	●
Vegetables (canned/fresh/frozen)	●	●
<b>Convection controls</b>		
Convection broil		Hi/Lo
Convection bake/Fast Bake	● / ●	● / -
Combination roast		●
<b>Sensor combination</b>		Chicken, Fish, Potato
Combination bake		Hi/Lo
Express Cook (1-6 minutes)	●	●
Instant On controls	●	●
Time cook	I & II	I & II
Add 30 seconds	●	●
Temp cook	●	●
Auto/Time Defrost	● / ●	● / ●
Fast Defrost	●	●
Power levels	10	10
Delay start		●
Programmable night light	●	●
Timer On/Off	●	●
Reminder		●
Variable beeper volume control	●	●
Cooking complete reminder	●	●
Child lockout	●	●
Two-speed venting	●	●
<b>Appearance</b>		
Color appearance	Stainless steel White on white Bisque on bisque Black on black	Stainless steel White on white Bisque on bisque Black on black
	Black White Bisque Black	Black White Black
Case color		
Designer-style handle	●	●
<b>Weights &amp; Dimensions</b>		
WxHxD—JVM1490	Cavity	21-3/32 x 8-7/32 x 14-3/32
(in inches)	Exterior	29-7/8 x 15-21/32 x 15-7/8
WxHxD—JVM1190	Cavity	18 x 8-1/16 x 12-1/2
(in inches)	Exterior	29-15/16 x 15-1/8 x 14-1/4
Approx. shipping weight (lbs.)	98	98
<b>Power/Ratings</b>		
2450 Frequency (MHz)	●	●
Electrical input @ 120V	Watts	1800
	Amperage	15
		1300
		12.5
<b>Accessories</b>		
Convection rack/Broil pan	● / -	● / ●
<b>Warranty</b>		
Full one-year in home warranty*	●	●
Limited nine-year magnetron warranty* (10 years total)	●	●

\*See written warranty for details.

## Dimensions (in inches)



## Ventilation Options

The Spacemaker convection/microwave and Spacemaker microwave ovens are designed for adaptation to the following three types of ventilation:

**Outside Exhaust** (Vertical—as shown above)

**Outside Exhaust** (Horizontal)

**Recirculating** (Non-vented ductless—see Filter Kit Drawing, order JX81, JX81A or JX81B)

Requires 120V grounded outlet. Electrical receptacle must be located in cabinet above Spacemaker microwave/convection and Spacemaker microwave ovens. No additional wiring, venting or cabinet rebuilding necessary in many cases. Complete detailed, easy-to-follow installation instructions and convenient full-size templates are packed with product.

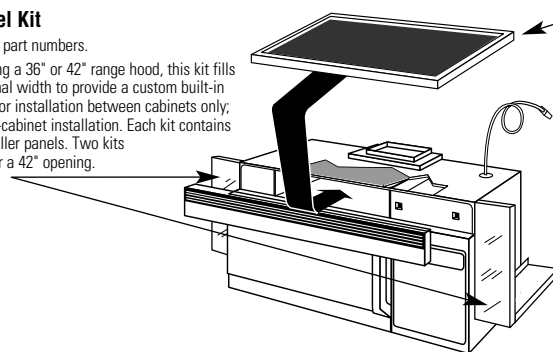
**Important:** When installing these ovens over a range, allow minimum of 2" from bottom of microwave oven to top of range backguard to allow for removal of light covers.

## Optional Accessories (Available at additional cost)

### Filler Panel Kit

See below for part numbers.

When replacing a 36" or 42" range hood, this kit fills in the additional width to provide a custom built-in appearance. For installation between cabinets only; not for end-of-cabinet installation. Each kit contains two 3"-wide filler panels. Two kits are needed for a 42" opening.



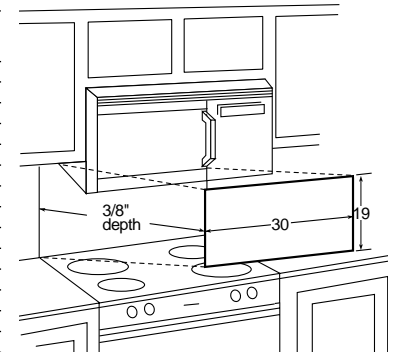
### Recirculating Charcoal Filter Kit

See below for part numbers.

To be used when the Spacemaker microwave oven cannot be vented to the outside. (Included with non-vented models.)

Model	Recirculating Charcoal Filter Kit	Filler Panel Kit	Decorative Panel Kit
JVM1190SY	JX81	JX41	JX22SS
JVM1190WY	JX81	JX40WH	JX22SS
JVM1190BY	JX81	JX41	JX22SS
JVM1490SD	JX81A	JX41	JX22SS
JVM1490WD	JX81A	JX40WH	JX22SS
JVM1490CD	JX81A	JX40CT	JX22SS
JVM1490BD	JX81A	JX41	JX22SS
JVM1440WD	JX81A	JX46WH	JX22SS
JVM1440BD	JX81A	JX46BL	JX22SS
JVM1640WB	JX81A	JX48WH	JX22SS
JVM1640AB	JX81A	JX48AL	JX22SS
JVM1640BB	JX81A	JX48BL	JX22SS
JVM1650SB	JX81A	JX48	JX22SS
JVM1650WB	JX81A	JX48WH	JX22SS
JVM1650CB	JX81A	JX48	JX22SS
JVM1650BB	JX81A	JX48BL	JX22SS
JVM1840WF	JX81B	JX52WH	JX22SS
JVM1840CF	JX81B	JX52CT	JX22SS
JVM1840BF	JX81B	JX52BL	JX22SS
JVM1850WF	JX81B	JX52WH	JX22SS
JVM1850CF	JX81B	JX52CT	JX22SS
JVM1850BF	JX81B	JX52BL	JX22SS
JVM1860SF	JX81B	JX52BL	JX22SS
JVM1860WF	JX81B	JX52WH	JX22SS
JVM1860CF	JX81B	JX52CT	JX22SS
JVM1860BF	JX81B	JX52BL	JX22SS
JVM3660SF	JX81B	-	-
JVM3660WF	JX81B	-	-
JVM3660CF	JX81B	-	-
JVM3660BF	JX81B	-	-

This information is not intended to be used for installing unit described. Before installing, consult installation instructions packed with product/kit for current dimensional data.



### JX22SS—Stainless Steel Decorative Panel Kit

When replacing a Hi/Low range with a Spacemaker microwave/convection oven or Spacemaker over a range model, this panel kit fills in the area between the microwave and range left by the Hi/Low model.



Listed by  
Underwriters  
Laboratories

# Spacemaker® Microwave Ovens

	GE Profile™		GE				
	JVM3660SF JVM3660WF JVM3660CF JVM3660BF	JVM1860SF JVM1861SF* JVM1860WF JVM1860CF JVM1860BF	JVM1850WF JVM1851WF* JVM1850CF JVM1851CF* JVM1850BF JVM1851BF*	JVM1840WF JVM1840CF JVM1840BF	JVM1650SB JVM1650WB JVM1650CB JVM1650BB	JVM1640WB JVM1640AB JVM1640BB	JVM1440WD JVM1440BD
<b>Capacity</b>							
Oven cavity (cu. ft.)	1.8	1.8	1.8	1.8	1.6	1.6	1.4
<b>Features</b>							
Watts (IEC-705 test procedure)	1100	1100	1100	1100	1000	1000	950
Electronic touch controls	•	•	•	•	•	•	•
SmartControl system w/interactive display	•	•	•	•	•	•	•
Scrolling display	2 Line	2 Line	2 Line	2 Line	1 Line	1 Line	1 Line
Clock and AM/PM pad	•	•	•	•	•	•	•
Variable scroll speed	•	•	•	•	•	•	•
Help pad	•	•	•	•	•	•	•
Concurrent programming	•	•	•	•	•	•	•
Display On/Off	•	•	•	•	•	•	•
Bilingual display (English/Spanish)	•	•	•	•	•	•	•
Sensor controls							
Beverage	•	•	•		•		
Chicken	•	•					
Fish	•	•					
Meats	•	•					
Popcorn	•	•	•		•		
Potatoes	•	•	•		•		
Reheat	•	•	•		•		
Vegetables	•	•	•		•		
Custom pads	•	•	•	•			
Convenience controls							
Beverage						•	•
Cook					•	•	•
Popcorn						•	•
Reheat						•	•
Snacks					•		
Express cook (1-6 min.)	•	•	•	•	•	•	•
Instant On controls	•	•	•	•	•	•	•
Time cook	I & II	I & II	I & II	I & II	I & II	I & II	I & II
Add 30 seconds	•	•	•	•	•	•	•
Auto/Time Defrost	•/•	•/•	•/•	•/•	•/•	•/•	•/•
Quick Defrost	•	•	•	•	•	•	•
Power levels	10	10	10	10	10	10	10
Delay Start	•	•	•	•	•	•	•
Reminder	•	•	•	•	•	•	•
CircuWave™ cooking system	1100	1100	1100	1100	•	•	•
Rack(s)	1	2	1	1	1	1	1
Turntable	Recessed	Recessed	Recessed	Recessed	•	•	•
Turntable On/Off	•	•	•	•	•	•	•
Halogen interior lighting	•	•	•	•	•	•	•
Halogen cooktop lighting	•	•	•	•	•	•	•
Full-view cooktop lighting	•	•	•	•	•	•	•
Night light	•	•	•	•	•	•	•
Programmable night light	•	•	•	•	•	•	•
Timer On/Off	•	•	•	•	•	•	•
Beeper volume control	•	•	•	•	•	•	•
Cooking complete reminder	•	•	•	•	•	•	•
Child lockout	•	•	•	•	•	•	•
300-CFM exhaust fan	3-Speed plus Boost	3-Speed plus Boost	3-Speed plus Boost	3-Speed plus Boost	2-Speed	2-Speed	2-Speed
Easy mount installation	•	•	•	•	•	•	•
<b>Appearance</b>							
Color appearance**	SS/WW/CC/BB	SS/WW/CC/BB	WW/CC/BB	WW/CC/BB	SS/WW/CC/BB	WW/AA/BB	WW/BB
Case color	Black/White/ Bisque/Black	Black/White/ Bisque/Black	White/ Bisque/Black	White/ Bisque/Black	Black/White/ Bisque/Black	White/Almond/Black	White/Black
Designer-style handle	•	•	•	•	•	•	•
Big view window	Bright view	Bright view	•	•	•	•	•
<b>Weights &amp; Dimensions</b>							
WxHxD (inches)	21-29/32 x 9-1/2 x 14-19/32		20-1/4 x 9-9/32 x 14-13/32		21-1/2 x 14-13/32		21-1/2
Exterior†	29-7/8 x 16-15/32 (rear) x 15-1/16		29-7/8 x 16-15/32 (rear) x 15-1/16		29-7/8 x 16-15/32 (rear) x 15-1/16		21-1/2
Approx. shipping weight (lbs.)	69	67	68	68	67	67	67
<b>Power/Ratings</b>							
2450 Frequency (MHz)	•	•	•	•	•	•	•
Electrical input Watts @ 120V	1480	1480	1480	1480	1480	1480	1480
Amperage	15	15	15	15	15	15	15
<b>Warranty</b>							
Full one-year in-home warranty‡	•	•	•	•	•	•	•
Limited nine-year magnetron warranty‡ (10 years total)	•	•	•	•	•	•	•

\*Non-vented model.

\*\*SS = Stainless steel, WW = White on white, CC = Bisque, AA = Almond on almond, BB = Black on black.

†Exterior dimensions: depth excludes handle.

‡Model JVM3660—Exterior: 35-7/8 x 16-13/32 (rear) x 15.

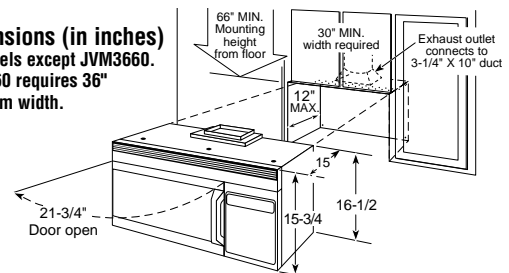
‡‡Model JVM1440—Cavity: 19-5/16 x 9-5/16 x 13-3/16 Exterior: 29-7/8 x 16-1/2 (rear) x 14-15/16.

‡‡See warranty for details.

**NOTE:** Convenience popcorn pad designed for use with 3 package sizes—3.5, 3.0 and 1.75 oz.

This information is not intended to be used for installing unit described. Before installing, consult installation instructions packed with product/kit for current dimensional data.

**Dimensions (in inches)**  
All models except JVM3660.  
JVM3660 requires 36" minimum width.





# Convection/Microwave Wall Ovens

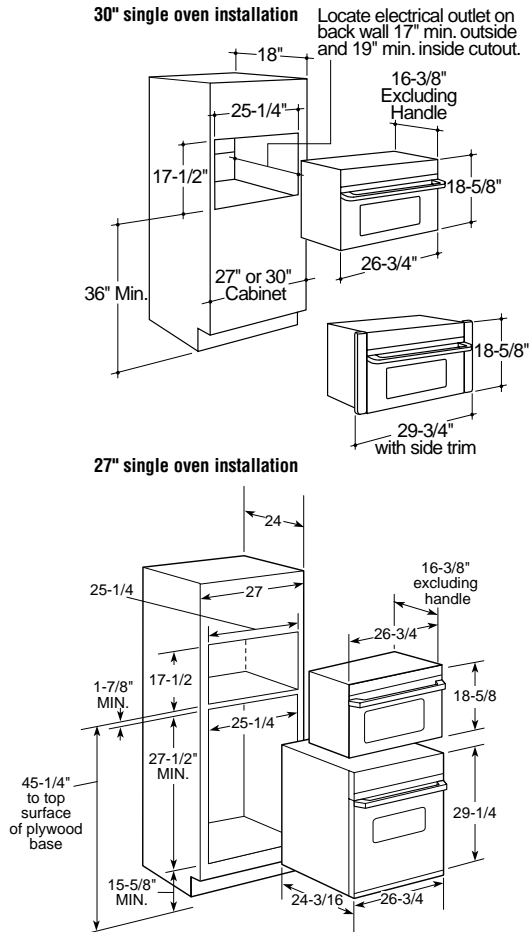
	GE Profile™		
	JEB1095SB	JEB1095WB JEB1095CB	JEB1095BB
<b>Capacity</b>			
Oven cavity (cu. ft.)	1.0	1.0	1.0
<b>Features</b>			
Watts (IEC-705 test procedure)	800	800	800
Electronic touch controls	•	•	•
Electronic digital display w/clock	•	•	•
Sensor controls			
Beverage	•	•	•
Cook	•	•	•
Popcorn	•	•	•
Reheat	•	•	•
Convection cook	•	•	•
Combination cook	•	•	•
Combination roast (probe)	•	•	•
Express cook	•	•	•
Instant On controls	•	•	•
Time cook	I & II	I & II	I & II
Add 30 seconds	•	•	•
Temp Cook/Hold (probe)	•	•	•
Auto Defrost	•	•	•
Time Defrost	•	•	•
Power levels	10	10	10
Delay/Start reminder	•	•	•
Minute pad	•	•	•
Program cooking	5-Stage	5-Stage	5-Stage
Kitchen timer	99-M./99-S. Digital	99-M./99-S. Digital	99-M./99-S. Digital
Variable beeper volume	•	•	•
Cooking complete reminder	•	•	•
<b>Appearance</b>			
Color appearance*	SS	WW/CC	BB
Case color	Black	White/Bisque	Black
Designer-style handle	•	•	•
<b>Weights &amp; Dimensions</b>			
Cavity	18x8-3/16x11-1/2		
	26-3/4x18-5/8x16-3/8		
WxHxD (in inches)	26-3/4x18-5/8x16-3/8		
Approx. shipping weight (lbs.)	84	84	84
<b>Power/Ratings</b>			
2450 Frequency (MHz)	•	•	•
Watts	1450	1450	1450
Electrical input @ 120V Amperage	13.0	13.0	13.0
<b>Accessories</b>			
Deluxe cookbook	•	•	•
Wire oven rack	•	•	•
30" trim kit (included)	•	•	•
<b>Warranty</b>			
Full one-year in-home warranty**	•	•	•
Limited nine-year magnetron warranty** (10 years total)	•	•	•

\*SS = Stainless steel, WW = White on white, CC = Bisque, BB = Black on black.

\*\*See written warranty for details.

†Exterior dimensions: depth excludes handle.

## Cutout and Dimensional Information (in inches)



This information is not intended to be used for installing unit described. Before installing, consult installation instructions packed with product/kit for current dimensional data.



Listed by  
Underwriters  
Laboratories

GE has a microwave for every kitchen.



**GE Profile™ Convection/  
Microwave Wall Ovens**

Offering a true built-in look, these ovens bring added space and visual appeal to the kitchen. Our wall oven is designed to fit 27" or 30" installations.



**Spacemaker® Over-The-Range  
Microwave Ovens**

These ovens complete the cooking center and make the most of consumers' time and kitchen space. Powerful venting and lighting systems are integrated into the base of each oven, eliminating the need for a range hood.



**Microwave Ovens**

These ovens offer tremendous flexibility, with a variety of color, size and feature options. There's a GE countertop microwave for every kitchen: Build them into a wall, hang them from a cabinet or set them on a shelf.

---

Industry-leading service support from—



America's  
**#1**  
Preferred  
Appliance  
Brand

GE is the appliance brand most often mentioned among the brands rated as offering the best products and services in America.\*

\*Source: Louis Harris Poll – 2000

**GE Appliances on the Web  
GEAppliances.com**

Everything you want to know about GE appliances.

**The GE Answer Center®  
800.626.2000**

Questions? Call anytime.

**GE Genuine Parts  
800.626.2002**

Accessories to enhance, upgrade or fix it.

**GE Appliance Service  
800.432.2737  
(800.GE.CARES)**

Product service at your convenience.



**GE Appliances**

General Electric Company  
Louisville, Kentucky 40225  
GEAppliances.com

GE has a policy of continuous improvement of its products and reserves the right to change materials and specifications without notice.

© 2002 General Electric Company  
Pub. No. 4-S401 PC32198