

# INSTRUCTIONS TO INSTALL TRIM KIT

To install the trim ring when the opening is larger than 28 1/2" x 19 1/2" follow these directions.

- 1 (a). Measure the width of the present opening minus 28 1/2" ( See figure 1 ).
- (b). Divide remainder by two and this will give you the width of wood pieces to be nailed or screwed to each end of the opening.
- (c). Use wood that is the same thickness as the counter top. When attaching be sure the top is level with the counter top.

3. After the cutout size has been reduced to 28 1/2" x 19 1/2" center the trim ring over the opening with wider edge of the trim to the front of the counter unit.

**NOTE :** We suggest that a bead of waterproof caulk be placed under the trim ring to prevent any moisture or spills from collecting under the trim ring (See fig. 3).

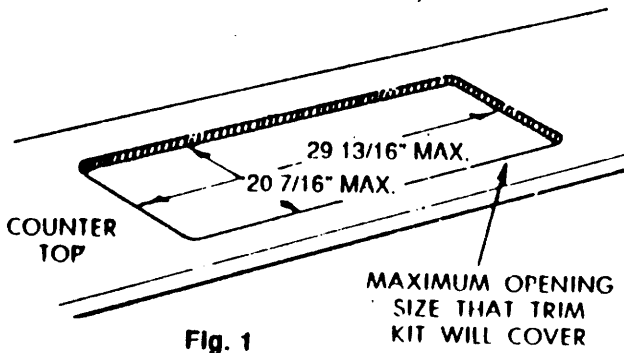


Fig. 1

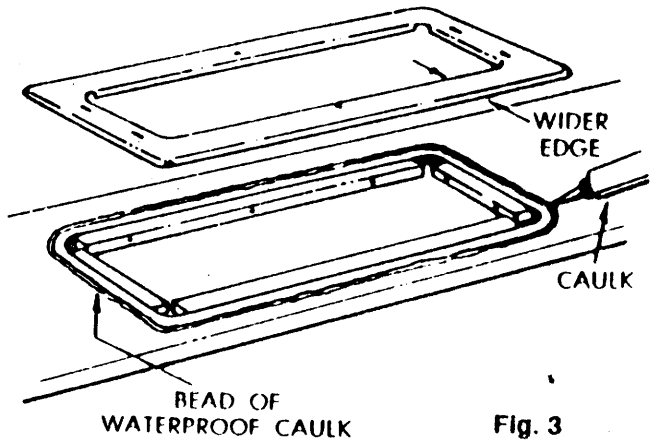


Fig. 3

**NOTE :** If the present opening has rounded corners, the filler pieces should be attached to the straight section of the cutout. The Trim Kit will cover any rounded corners.

- 2 (a). Measure the depth of the present opening minus 19 1/2" ( See fig. 1 ).
- (b). Divide this remainder by two and this will give you the width of the wood pieces to be attached to the front and back of your counter top opening (See fig. 2).

- 4 (a). Place the counter unit into the trim ring.
- (b). Attach both the counter unit and trim ring to the counter top with wood screws (See fig. 4).

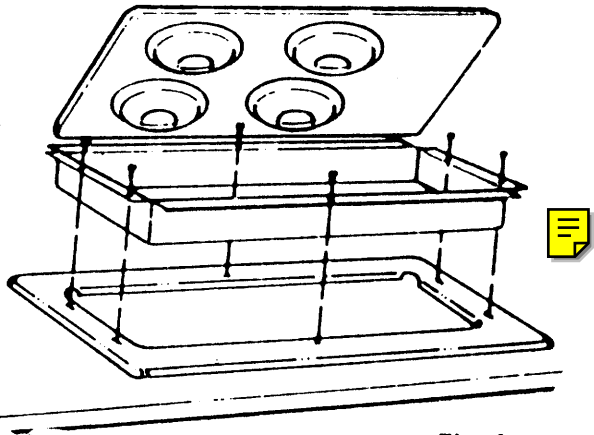


Fig. 4

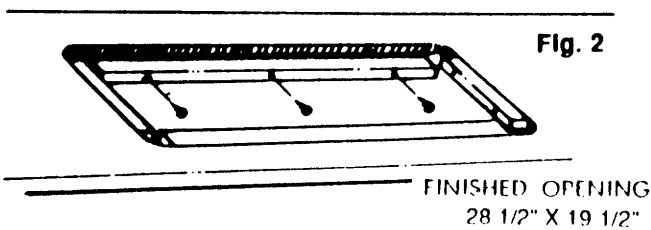


Fig. 2

5. After counter unit has been securely anchored to the counter top, wipe off any excess caulk that may have squeezed from beneath the trim ring.

Pub. 31-10178 SR10278  
INT149-1