

Haier

Ductless HVAC

Quick Reference Guide



Quick Reference Guide Single-Zone Systems

Highwalls



Built-in WiFi
Adaptable with WiFi Adapter QAWF01A



Max Operating Range

9/12TE1VHA: Cooling: 14-115°F (-10-46°C) Heating: -4-75°F (-20-24°C)
 09/12TE2VHA, 09/12/18/24TE2HDA: Cooling: -4-115°F (-40-46°C) Heating: -4-75°F (-20-24°C)
 18/24TE2VHA: Cooling: 0-115°F (-18-46°C) Heating: -4-75°F (-20-24°C)
 24/30/36TE2HFA: Cooling: -40-115°F (-40-46°C) Heating: -4-75°F (-20-24°C)
 Cooling operating range varies by model. Cooling below 23°F (-5°C) requires wind baffle.

	Size	Indoor Model	Outdoor Model	AHRI#	Max Heat @ 5°F	SEER/EER/ HSPF	SEER2/EER2/ HSPF2 (IV)	Line Set: Liquid Suction	Min/Max Line Length	Max Fuse Size A	Min Circuit Amp	WiFi	Standard Controller	Optional Controller
115V	9K	AW09TE1VHA	1U09TE1VHA	10191421	6,900	16/11/9	17.5/10.5/9.5	1/4" - 3/8"	10'/66'	20	18	WiFi	WJ01X24721*	QACT17A** YR-E16B** YR-E17** (See note, below)
	12K	AW12TE1VHA	1U12TE1VHA	10191422	8,930	16/11/9	17/9.5/9	1/4" - 3/8"	10'/66'	20	18	WiFi		
	9K	AW09TE2VHA	1U09TE2VHA	206551253	6,000	18/11/10	--	1/4" - 3/8"	10'/66'	15	12	WiFi		
		AW09TC2HDA	1U09TE2HDA	210715479	7,000	18/11/10	19/11/9	1/4" - 3/8"	10'/66'	15	12	WiFi		
	12K	AW12TE2VHA	1U12TE2VHA	206551254	8,500	18/11/10	--	1/4" - 3/8"	10'/66'	15	12	WiFi		
		AW12TC2HDA	1U12TE2HDA	210715480	8,400	18/11/10	19/11/9.2	1/4" - 3/8"	10'/66'	15	12	WiFi		
	18K	AW18TE2VHA	1U18TE2VHA	10191423	13,600	18/10/10.5	--	1/4" - 1/2"	10'/83'	20	17	WiFi		
		AW18TC2HDA	1U18TE2HDA	209938278	13,000	19/11/10	19/11/9	1/4" - 1/2"	10'/83'	25	18	WiFi		
	24K	AW24TE2VHA	1U24TE2VHA	10191424	16,400	18/10/10	--	1/4" - 1/2"	10'/83'	25	19	WiFi		
		AW24TC2HDA	1U24TE2HDA	209938279	16,700	19/9.5/10	19/9.5/9	1/4" - 1/2"	10'/83'	30	23	WiFi		
Low Ambient Cooling	24K	AW24TL2HFA	1U24TL2HFA	207769097	21,800	20/11/10	20/11/9.5	3/8" - 5/8"	10'/165'	30	27	WiFi	WJ01X24721*	QACT17A YR-E16B YR-E17
	30K	AW30TL2HFA	1U3036TL2HFA	207769098	21,800	18/9.5/9.5	18/9.5/9	3/8" - 5/8"	10'/165'	30	27	WiFi		
	36K	AW36TL2HFA	1U3036TL2HFA	207769099	22,000	17.5/8/9.5	17.5/8/9	3/8" - 5/8"	10'/165'	30	27	WiFi		

NOTE: WK-B controller adapter not required for AW**TC2HDA models



Max Operating Range

Cooling: 14-115°F (-10-46°C) Heating: -15-75°F (-26-24°C)
 Cooling below 23°F (-5°C) requires wind baffle.

	Size	Indoor Model	Outdoor Model	AHRI#	Max Heat @ 5°F	SEER/EER/ HSPF	SEER2/EER2/ HSPF2 (IV)	Line Set: Liquid Suction	Min/Max Line Length	Max Fuse Size A	Min Circuit Amp	WiFi	Standard Controller	Optional Controller
	9K	AW09ES2VHB	1U09AP2VHA	202583709	10,000	23.5/14.5/10.5	23.5/14.5/9.3	1/4" - 3/8"	10'/50'	15	11	WiFi	WJ01X24721*	QACT17A** YR-E16B** YR-E17**
	12K	AW12ES2VHB	1U12AP2VHA	202583711	13,000	23/12.5/11	23/12.5/10.2	1/4" - 3/8"	10'/50'	15	11	WiFi		
	15K	AW15ES2VHB	1U15AP2VHA	202583712	16,000	21.5/12.5/10.5	21.5/12.5/9.6	1/4" - 1/2"	10'/83'	20	14	WiFi		
	18K	AW18ES2VHB	1U18AP2VHA	202583710	17,000	21/12.5/10.5	21/12.5/9.5	1/4" - 1/2"	10'/83'	20	14	WiFi		
	24K	AW24ES2VHB	1U24AP2VHA	202583713	20,000	20/12.5/10.5	20/12.5/9.5	1/4" - 1/2"	10'/83'	30	20	WiFi		



Max Operating Range

09/12/18EH2VHE: Cooling: 14-115°F (-10-46°C) Heating: -31-75°F (-35-24°C)
 24/30/36LP2HDA: Cooling: -4°F -115°F (-20-46°C) Heating: -15°F -75°F (-26-46°C)
 Cooling below 23°F (-5°C) requires wind baffle.

	Size	Indoor Model	Outdoor Model	AHRI#	Max Heat @ 5°F	SEER/EER/ HSPF	SEER2/EER2/ HSPF2 (IV)	Line Set: Liquid Suction	Min/Max Line Length	Max Fuse Size A	Min Circuit Amp	WiFi	Standard Controller	Optional Controller
	9K	AW09EH2VHD	1U09EH2VHE	206445819	12,000	30/16/15.2	30/16/14	1/4" - 1/2"	10'/50'	15	13	WiFi	WJ26X27153*	QACT17A YR-E16B YR-E17
	12K	AW12EH2VHD	1U12EH2VHE	206389351	17,000	27/15/13	27/15/13	1/4" - 1/2"	10'/50'	20	14	WiFi		
	18K	AW18EH2VHD	1U18EH2VHE	206445820	20,000	23/13/12	23/13/11	1/4" - 1/2"	10'/83'	30	20	WiFi		
	24K	AW24TL2HFA	1U24LP2HDA	211744601	22,000	--	21/11/10	3/8" - 5/8"	10'/165'	25	21	WiFi		
	30K	AW30TL2HFA	1U3036LP2HDA	211744604	25,800	--	19/8.8/9	3/8" - 3/4"	10'/165'	30	26	WiFi		
	36K	AW36TL2HFA	1U3036LP2HDA	211744606	26,200	--	18/8.2/9	3/8" - 3/4"	10'/165'	30	26	WiFi		



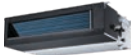
Operating Range

Cooling: 0-115°F (-18-46°C) Heating: -4-75°F (-20-24°C)
 Cooling below 23°F (-5°C) requires wind baffle.

	Size	Indoor Model	Outdoor Model	AHRI#	Max Heat @ 5°F	SEER/EER/ HSPF	Line Set: Liquid Suction	Min/Max Line Length	Max Fuse Size A	Min Circuit Amp	WiFi	Standard Controller	Optional Controller
	24K	AW24LP2VHA	1U24LP2VHA	10221212	20,030	17/10/10	3/8" - 5/8"	10'/165'	25	21	WiFi	WJ01X24721*	QACT17A** YR-E16B** YR-E17**
	36K	AW36LP2VHA	1U36LP2VHA	10225937	28,880	17/8.6/10	3/8" - 5/8"	10'/165'	30	26	WiFi		

*Remote controller is shipped with indoor unit.
 **Requires WK-B adapter.

Ducted



Max Operating Range

09/12/18EH2VHE: Cooling: 14-115°F (-10-46°C) Heating: -31-75°F (-35-24°C)
24/3036/4248LP2HDA: Cooling: -4°F-115°F (-20-46°C) Heating: -15°F-75°F (-26-4°C)
Cooling operating range varies by model. Cooling below 23°F (-5°C) requires wind baffle..

Size	Indoor Model	Outdoor Model	AHRI#	Heat @ 5°F	SEER/EER/HSPF	SEER2/EER2/HSPF2 (IV)	Line Set: Liquid Suction	Min/Max Line Length	Max Fuse Size A	Min Circuit Amp	WiFi	Standard Controller	Optional Controller
9K	USYM09UCDSA	1U09EH2VHE	206608650	10,000	21/12.5/11	--	1/4" - 3/8"†	10'/50'	15	13	WiFi	Wired controller must be purchased separately	QACT17A YR-E16B YR-E17
12K	USYM12UCDSA	1U12EH2VHE	206389354	12,000	20/12.5/10.5	--	1/4" - 3/8"†	10'/50'	20	14	WiFi		
18K	USYM18UCDSA	1U18EH2VHE	206608651	19,000	19/11.5/10	--	1/4" - 1/2"	10'/83'	30	20	WiFi		
24K	USYM24UCDDA	1U24LP2HDA	211727008	20,000	--	16.5/9.5/8.1	3/8" - 5/8"	10'/165'	25	21	WiFi		
30K	USYM30UCDDA	1U3036LP2HDA	211727009	23,800	--	15.2/9/9	3/8" - 3/4"*	10'/165'	30	26	WiFi		
36K	USYM36UCDDA	1U3036LP2HDA	211727010	25,600	--	15/8/9	3/8" - 3/4"*	10'/165'	30	26	WiFi		
42K	USYM42UCDDA	1U4248LP2HDA	211729105	36,800	--	15.2/7.8/8.7	3/8" - 3/4"*	10'/230'	40	35	WiFi		
48K	USYM48UCDDA	1U4248LP2HDA	211729106	35,600	--	15.2/7.3/8.8	3/8" - 3/4"*	10'/230'	40	35	WiFi		

* Standard lineset size is 3/4", a 3/4" to 5/8" adapter will be shipped with outdoor unit for matching the indoor lineset size. Recommended to use adapter on the indoor side.

Consoles



Max Operating Range

Cooling: 14-115°F (-10-46°C) Heating: -31-75°F (-35-24°C)
Cooling below 23°F (-5°C) requires wind baffle.

Size	Indoor Model	Outdoor Model	AHRI#	Max Heat @ 5°F	SEER/EER/HSPF	SEER2/EER2/HSPF2 (IV)	Line Set: Liquid Suction	Min/Max Line Length	Max Fuse Size A	Min Circuit Amp	WiFi	Standard Controller	Optional Controller
9K	USYF09UCDWA	1U09EH2VHE	206608652	9,000	20/11/10	20/11/8.7	1/4" - 3/8"†	10'/50'	15	13	WiFi	WJ01X24721*	QACT17A YR-E16B YR-E17
12K	USYF12UCDWA	1U12EH2VHE	206389355	10,000	20/12.5/10	20/12.5/9.5	1/4" - 3/8"†	10'/50'	20	14	WiFi		
18K	USYF18UCDWA	1U18EH2VHE	206608653	15,000	18/10/9	17.5/10/8.5	1/4" - 1/2"	10'/83'	30	20	WiFi		

Compact Cassettes



Max Operating Range

Cooling: 14-115°F (-10-46°C) Heating: -31-75°F (-35-24°C)
Cooling below 23°F (-5°C) requires wind baffle.

Size	Indoor Model	Outdoor Model	AHRI#	Max Heat @ 5°F	SEER/EER/HSPF	SEER2/EER2/HSPF2 (IV)	Line Set: Liquid Suction	Min/Max Line Length	Max Fuse Size A	Min Circuit Amp	WiFi	Standard Controller	Optional Controller
9K	AB09SC2VHA	1U09EH2VHE	206445025	9,000	20/10.5/9	20/10.5/7.9	1/4" - 3/8"†	10'/50'	15	13	NA	WJ01X24721*	QACT17A YR-E16B YR-E17
12K	AB12SC2VHA	1U12EH2VHE	206389356	11,000	20/12.5/10	20/12.5/9	1/4" - 3/8"†	10'/50'	20	14	NA		
18K	AB18SC2VHA	1U18EH2VHE	206445026	17,000	16/10.5/9	15.8/10.5/8.1	1/4" - 1/2"	10'/83'	30	20	NA		

Large Cassettes



Max Operating Range

Cooling: -4°F-115°F (-20-46°C) Heating: -15°F-75°F (-26-4°C)
Cooling below 23°F (-5°C) requires wind baffle.

Size	Indoor Model	Outdoor Model	AHRI#	Max Heat @ 5°F	SEER2/EER2/HSPF2 (IV)	Line Set: Liquid Suction	Min/Max Line Length	Max Fuse Size A	Min Circuit Amp	WiFi	Standard Controller	Optional Controller
24K	USYL24UCDDA	1U24LP2HDA	211744600	19,000	19/11/8.6	3/8" - 5/8"	10'/165'	25	21	WiFi	WJ01X24721*	QACT17A YR-E16B YR-E17
30K	USYL30UCDDA	1U3036LP2HDA	211744602	26,800	18/10.6/9.2	3/8" - 3/4"	10'/165'	30	26	WiFi		
36K	USYL36UCDDA	1U3036LP2HDA	211744604	26,600	18/9.5/9	3/8" - 3/4"	10'/165'	30	26	WiFi		
42K	USYL42UCDDA	1U4248LP2HDA	211744605	32,800	18/8.7/8.5	3/8" - 3/4"	10'/230'	40	35	WiFi		
48K	USYL48UCDDA	1U4248LP2HDA	211744607	33,000	17/8/8.5	3/8" - 3/4"	10'/230'	40	35	WiFi		



Max Operating Range

Cooling: 0-115°F (-18-46°C) Heating: -4-75°F (-20-24°C)
Cooling below 23°F (-5°C) requires wind baffle.

Size	Indoor Model	Outdoor Model	AHRI#	Max Heat @ 5°F	SEER/EER/HSPF	Line Set: Liquid Suction	Min/Max Line Length	Max Fuse Size A	Min Circuit Amp	WiFi	Standard Controller	Optional Controller
------	--------------	---------------	-------	----------------	---------------	--------------------------	---------------------	-----------------	-----------------	------	---------------------	---------------------

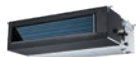
Cassette 3' x 3'



24K	AL24LP2VHA	1U24LP2VHA	10225933	16,520	17/11.5/10	3/8" - 5/8"	10'/165'	25	21	NA	YR-HBS01*	QACT17A YR-E16B YR-E17
36K	AL36LP2VHA	1U36LP2VHA	10225936	21,050	17/10/10.3	3/8" - 5/8"	10'/165'	30	26	NA		
48K	AL48LP2VHA	1U48LP2VHA	10225938	32,380	17/10.5/10.5	3/8" - 5/8"	10'/230'	40	35	NA		

PB-950KB grille required for Cassette. Condensate pump included.

High Static Ducted



36K	AM36LP2VHA	1U36LP2VHA	10225935	23,140	17/10/10.5	3/8" - 5/8"	10'/165'	30	26	NA	YR-E17*	QACT17A YR-E16B
48K	AM48LP2VHA	1U48LP2VHA	10225939	31,200	16.9/10/10	3/8" - 5/8"	10'/230'	40	35	NA		

† Use 1/2 x 3/8 suction line adapter shipped with outdoor unit

* Remote controller is shipped with indoor unit.

** Requires WK-B adapter.

Quick Reference Guide Multi-Zone Systems

Multi-Zone Outdoor Units



Max Operating Range

Cooling: 14-115°F (-10-46°C) Heating: -15-75°F (-26-24°C)
Cooling below 23°F (-5°C) requires wind baffle.

Size	Outdoor Model	Max Line All Comb.	Max Heat @ 5°F (Non Ducted)	SEER/EER/HSPF Non Ducted	SEER/EER/HSPF Ducted	SEER2/EER2/HSPF 2 (IV) Non Ducted	SEER2/EER2/HSPF 2 (IV) Ducted	AHRI#		Max Fuse Size A	Min Circuit Amp
								Non Ducted	Ducted		
20K	2U20EH2HDA	165'	20,988	18/12/10.2	16/11/10	18/12/10.2	16/11/9.8	210082195	210151026	25	20
24K	3U24EH2HDA	197'	23,471	19.5/12/10.5	16.8/11/10	19.5/12/10.2	16.8/11/9.5	210082198	210082199	30	23
36K	4U36EH2HDA	230'	30,623	18.5/9.3/11	15.2/8.8/9.5	19/9.3/9.5	15.7/8.8/8.7	210082201	210151027	40	33



Max Operating Range

Cooling: 14-115°F (-10-46°C) Heating: -4-75°F (-20-24°C)
Cooling below 23°F (-5°C) requires wind baffle.

Size	Outdoor Model	Max Line All Comb.	Max Heat @ 5°F (Non Ducted)	SEER/EER/HSPF Non Ducted	SEER/EER/HSPF Ducted	SEER2/EER2/HSPF 2 (IV) Non Ducted	SEER2/EER2/HSPF 2 (IV) Ducted	AHRI#		Max Fuse Size A	Min Circuit Amp
								Non Ducted	Ducted		
18K	2U18MS2HDA	98'	13,700	20/12.5/11	18.0/11.5/9.4	21/12.7/10	18/11.2/8.5	207698996	207722661	30	19
24K	3U24MS2HDA	197'	13,900	21/12.5/10.5	16.0/11.0/9	22/12.8/10	16/11/9	207698998	207722662	30	22
36K	4U36MS2HDA	230'	22,000	18/9/10.5	15.6/8.8/9.3	19/9/9.4	16/8.8/8.4	207802647	207802648	30	26
42K	5U42MS2HDA	262'	26,176	16/7.8/10	14.2/7.2/10	18/7.8/8.8	14.8/7.2/8.8	210404027	210404028	40	33

Multi-Zone Indoor Units



Wall Mount

Size	Indoor Model	Line Set: Liquid Suction	WiFi	Standard Controller	Optional Controllers
7K	AW07TC2HDA	1/4" - 3/8"	WiFi	WJ01X24721*	QACT17A YR-E16B YR-E17
9K	AW09TC2HDA	1/4" - 3/8"	WiFi		
12K	AW12TC2HDA	1/4" - 3/8"	WiFi		
18K	AW18TC2HDA	1/4" - 1/2"	WiFi		
24K	AW24TC2HDA	1/4" - 1/2"	WiFi		



Cassette 2' x 2'

Size	Indoor Model	Line Set: Liquid Suction	WiFi	Standard Controller	Optional Controllers
9K	AB09SC2VHA	1/4" - 3/8"	NA	WJ01X24721	QACT17A YR-E16B YR-E17
12K	AB12SC2VHA	1/4" - 3/8"	NA		
18K	AB18SC2VHA	1/4" - 1/2"	NA		

PB-700KB grille required (Must order separate). Condensate pump included.



Cassette 3' x 3'

Size	Indoor Model	Line Set: Liquid Suction	WiFi	Standard Controller	Optional Controller
24K	AL24LP2VHA	3/8" - 5/8"	NA	WJ01X24721*	QACT17A YR-E16B YR-E17

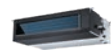
PB-950KB grille required (Must order separate). Condensate pump included.

Built-in WiFi
Adaptable with WiFi Adapter QAWF01A



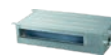
Console

Size	Indoor Model	Line Set: Liquid Suction	WiFi	Standard Controller	Optional Controllers
9K	USYF09UCDWA	1/4" - 3/8"	WiFi	WJ01X24721	QACT17A YR-E16B YR-E17
12K	USYF12UCDWA	1/4" - 3/8"	WiFi		
18K	USYF18UCDWA	1/4" - 1/2"	WiFi		



Mid-Static Duct

Size	Indoor Model	Line Set: Liquid Suction	WiFi	Standard Controller	Optional Controller
9K	USYM09UCDSA	1/4" - 3/8"	WiFi	Wired controller must be purchased separately	QACT17A YR-E16B YR-E17
12K	USYM12UCDSA	1/4" - 3/8"	WiFi		
18K	USYM18UCDSA	1/4" - 1/2"	WiFi		
24K	USYM24UCDSA	3/8" - 5/8"	WiFi		



Slim Duct

Size	Indoor Model	Line Set: Liquid Suction	WiFi	Standard Controller	Optional Controller
7K	AD07SL2VHB	1/4" - 3/8"	NA	YR-E17	QACT17A YR-E16B
9K	AD09SL2VHB	1/4" - 3/8"	NA		
12K	AD12SL2VHB	1/4" - 3/8"	NA		
18K	AD18SL2VHB	1/4" - 1/2"	NA		



High Static Duct

Size	Indoor Model	Line Set: Liquid Suction	WiFi	Standard Controller	Optional Controller
24K	AM24LP2VHA	3/8" - 5/8"	NA	YR-E17	QACT17A YR-E16B

*Remote controller is shipped with indoor unit.
**Requires WK-B adapter.

Multi-Zone Matching Charts

2U20EH2HDA
2U18MS2HDA

- No adapters required/shipped with 2U Models

		Combinations	
		Port B	Port A
		Port Size: 1/4" x 3/8"	Port Size: 1/4" x 3/8"
Two Zone	7	7	
	9	7	
	9	9	
	12	7	
	12	9	
	12	12	

3U24EH2HDA (Ships with adapter E)
3U24MS2HDA (Ships with adapter D)

- No adapters required for Ports B, A

		Combinations			
		Port C		Port B	Port A
		Port Size: MS: 1/4" x 3/8" EH: 1/4" x 1/2"	Required Adapter	Port Size: 1/4" x 3/8"	Port Size: 1/4" x 3/8"
		MS	EH		
Two Zone	7	-	E	7	-
	9	-	E	7	-
	9	-	E	9	-
	12	-	E	7	-
	12	-	E	9	-
	12	-	E	12	-
	18	D	-	7	-
	18	D	-	9	-
	18	D	-	12	-
Three Zone	7	-	E	7	7
	9	-	E	7	7
	9	-	E	9	7
	12	-	E	7	7
	9	-	E	9	9
	12	-	E	9	7
	12	-	E	9	9
	12	-	E	12	7
	18	D	-	7	7
	12	-	E	12	9

4U36EH2HDA (Ships with adapter A, C, D, and E)
4U36MS2HDA (Ships with adapter D and E)

- No adapters required for Ports B, A

		Combinations					
		Port D		Port C		Port B	Port A
		Port Size: 1/4" x 1/2"	Required Adapter*	Port Size: 1/4" x 3/8"	Required Adapter*	Port Size: 1/4" x 3/8"	Port Size: 1/4" x 3/8"
Two Zone	18	-	9	-	-	-	
	18	-	12	-	-	-	
	24	A, C	7	-	-	-	
	24	A, C	9	-	-	-	
	24	A, C	12	-	-	-	
	18	-	18	D	-	-	
	18	-	24	A, B	D	-	
	24	A, C	24	A, B	D	-	
	9	E	9	-	9	-	
	12	E	9	-	7	-	
	12	E	9	-	9	-	
	12	E	12	-	7	-	
Three Zone	18	-	7	-	7	-	
	12	E	12	-	12	-	
	18	-	12	-	12	-	
	18	-	12	-	7	-	
	24	A, C	7	-	7	-	
	24	A, C	9	-	9	-	
	24	A, C	9	-	7	-	
	18	-	12	-	9	-	
	24	A, C	12	-	12	-	
	24	A, C	12	-	7	-	
	24	A, C	12	-	9	-	
	18	-	18	D	12	-	
	Four Zone	7	E	7	-	7	7
		9	E	7	-	7	7
		9	E	9	-	7	7
		12	E	7	-	7	7
		9	E	9	-	9	7
		12	E	9	-	7	7
12		E	9	-	9	7	
12		E	12	-	7	7	
12		E	9	-	9	9	
18		-	7	-	7	7	
12		E	12	-	9	7	
18		-	9	-	7	7	
12		E	12	-	9	9	
12		E	12	-	12	7	
18		-	9	-	9	7	
18		-	12	-	7	7	
24		A, C	7	-	7	7	
12		E	12	-	12	9	
24		A, C	9	-	7	7	
12		E	12	-	12	12	
18		-	12	-	9	9	

* All 18K models require 1/4" liquid and 1/2" vapor linesets.
24K Model adapters vary. See color code:

Applies to the following models with 3/8" and 5/8" port:
AW24LP2VHA, USYM24UCDSA, USYL24UCDSA, AL24LP2VHA

Applies to the following model with 1/4" and 1/2" port:
AW24TC2HDA

Adapters

		GEA Part #
A	1/4" to 3/8" (Liquid line for ports C & D)	WJ01X23925
B	3/8" to 5/8" (Vapor line for port C)	WJ01X23924
C	1/2" to 5/8" (Vapor line for port D)	WJ01X23932
D	3/8" to 1/2" (Vapor line for port C)	WJ01X26853
E	1/2" to 3/8" (Vapor line for port C or D)	WJ01X26854

Quick Reference Guide Multi-Zone Systems

Multi-Zone Matching Charts

5U42MS2HDA (Ships with two (2) adapter E)

- No adapters required for Ports B, A

		Combinations							
		Port E		Port D		Port C		Port B	Port A
		Port Size: 1/4" x 1/2"	Required Adapter*	Port Size: 1/4" x 1/2"	Required Adapter*	Port Size: 1/4" x 3/8"	Required Adapter*	Port Size: 1/4" x 3/8"	Port Size: 1/4" x 3/8"
Two Zone	24K	A, C	-	-	7K	-	-	-	
	18K	-	-	-	9K	-	-	-	
	24K	A, C	-	-	9K	-	-	-	
	18K	-	-	-	12K	-	-	-	
	24K	A, C	-	-	12K	-	-	-	
	18K	-	18K	-	-	-	-	-	
	24K	A, C	-	18K	-	-	-	-	
	24K	A, C	-	24K	A, C	-	-	-	
	18K	-	-	-	7K	-	7K	-	
	24K	A, C	-	-	7K	-	7K	-	
Three Zone	12K	E	-	-	9K	-	7K	-	
	18K	-	-	-	9K	-	7K	-	
	24K	A, C	-	-	9K	-	7K	-	
	12K	E	-	-	12K	-	7K	-	
	18K	-	-	-	12K	-	7K	-	
	24K	A, C	-	-	12K	-	7K	-	
	18K	-	18K	-	7K	-	-	-	
	24K	A, C	-	18K	7K	-	-	-	
	9K	E	-	-	9K	-	9K	-	
	12K	E	-	-	9K	-	9K	-	
	18K	-	-	-	9K	-	9K	-	
	24K	A, C	-	-	9K	-	9K	-	
	12K	E	-	-	12K	-	9K	-	
	18K	-	-	-	12K	-	9K	-	
	24K	A, C	-	-	12K	-	9K	-	
	18K	-	18K	-	9K	-	-	-	
	24K	A, C	-	18K	9K	-	-	-	
	12K	E	12K	E	12K	-	-	-	
	18K	-	12K	E	12K	-	-	-	
	24K	A, C	-	12K	E	12K	-	-	
18K	-	18K	-	12K	-	-	-		
24K	A, C	-	18K	12K	-	-	-		
18K	-	18K	-	18K	D	-	-		
Four Zone	7K	E	-	-	7K	-	7K	7K	
	9K	E	-	-	7K	-	7K	7K	
	12K	E	-	-	7K	-	7K	7K	
	18K	-	-	-	7K	-	7K	7K	
	24K	A, C	-	-	7K	-	7K	7K	
	9K	E	-	-	9K	-	7K	7K	
	12K	E	-	-	9K	-	7K	7K	
	18K	-	-	-	9K	-	7K	7K	
	24K	A, C	-	-	9K	-	7K	7K	
	12K	E	-	-	12K	-	7K	7K	
	18K	-	-	-	12K	-	7K	7K	
	24K	A, C	-	-	12K	-	7K	7K	
	18K	-	18K	-	7K	-	7K	-	
	24K	A, C	-	18K	7K	-	7K	-	
	9K	E	-	-	9K	-	9K	7K	
	12K	E	-	-	9K	-	9K	7K	
	18K	-	-	-	9K	-	9K	7K	
	24K	A, C	-	-	9K	-	9K	7K	
	12K	E	-	-	12K	-	9K	7K	
	18K	-	-	-	12K	-	9K	7K	
24K	A, C	-	-	12K	-	9K	7K		
18K	-	18K	-	9K	-	7K	-		
12K	E	-	-	12K	-	12K	7K		
18K	-	-	-	12K	-	12K	7K		
24K	A, C	-	-	12K	-	12K	7K		
18K	-	18K	-	12K	-	7K	-		
9K	E	-	-	9K	-	9K	9K		

		Combinations							
		Port E		Port D		Port C		Port B	Port A
		Port Size: 1/4" x 1/2"	Required Adapter*	Port Size: 1/4" x 1/2"	Required Adapter*	Port Size: 1/4" x 3/8"	Required Adapter*	Port Size: 1/4" x 3/8"	Port Size: 1/4" x 3/8"
Four Zone (cont'd)	12K	E	-	-	9K	-	9K	9K	
	18K	-	-	-	9K	-	9K	9K	
	24K	A, C	-	-	9K	-	9K	9K	
	12K	E	-	-	12K	-	9K	9K	
	18K	-	-	-	12K	-	9K	9K	
	24K	A, C	-	-	12K	-	9K	9K	
	18K	-	18K	-	9K	-	9K	-	
	12K	E	-	-	12K	-	12K	9K	
	18K	-	-	-	12K	-	12K	9K	
	12K	E	-	-	12K	-	12K	12K	
Five Zone	18K	-	-	-	12K	-	12K	12K	
	7K	E	7K	E	7K	-	7K	7K	
	9K	E	7K	E	7K	-	7K	7K	
	12K	E	7K	E	7K	-	7K	7K	
	18K	-	7K	E	7K	-	7K	7K	
	9K	E	9K	E	7K	-	7K	7K	
	12K	E	9K	E	7K	-	7K	7K	
	18K	-	9K	E	7K	-	7K	7K	
	24K	A, C	-	9K	E	7K	-	7K	
	12K	E	9K	E	9K	-	9K	7K	
	18K	-	9K	E	9K	-	9K	7K	
	24K	A, C	-	9K	E	9K	-	9K	
	12K	E	12K	E	9K	-	9K	7K	
	18K	-	12K	E	9K	-	9K	7K	
	24K	A, C	-	12K	E	9K	-	9K	
	12K	E	12K	E	7K	-	7K	7K	
	18K	-	12K	E	7K	-	7K	7K	
	9K	E	9K	E	9K	-	7K	7K	
	12K	E	9K	E	9K	-	7K	7K	
	18K	-	9K	E	9K	-	7K	7K	
24K	A, C	-	9K	E	9K	-	9K		
12K	E	12K	E	9K	-	9K	7K		
18K	-	12K	E	9K	-	9K	7K		
9K	E	9K	E	9K	-	9K	7K		
12K	E	9K	E	9K	-	9K	7K		
18K	-	9K	E	9K	-	9K	7K		
24K	A, C	-	9K	E	9K	-	9K		
12K	E	12K	E	9K	-	9K	7K		
18K	-	12K	E	9K	-	9K	7K		
9K	E	9K	E	9K	-	9K	7K		
12K	E	9K	E	9K	-	9K	7K		
18K	-	9K	E	9K	-	9K	7K		
24K	A, C	-	9K	E	9K	-	9K		
12K	E	12K	E	9K	-	9K	7K		
18K	-	12K	E	9K	-	9K	7K		
9K	E	9K	E	9K	-	9K	7K		
12K	E	9K	E	9K	-	9K	7K		
18K	-	9K	E	9K	-	9K	7K		
24K	A, C	-	9K	E	9K	-	9K		
12K	E	12K	E	9K	-	9K	7K		
18K	-	12K	E	9K	-	9K	7K		
9K	E	9K	E	9K	-	9K	7K		
12K	E	9K	E	9K	-	9K	7K		
18K	-	9K	E	9K	-	9K	7K		
24K	A, C	-	9K	E	9K	-	9K		
12K	E	12K	E	9K	-	9K	7K		
18K	-	12K	E	9K	-	9K	7K		
9K	E	9K	E	9K	-	9K	7K		
12K	E	9K	E	9K	-	9K	7K		
18K	-	9K	E	9K	-	9K	7K		
24K	A, C	-	9K	E	9K	-	9K		
12K	E	12K	E	9K	-	9K	7K		
18K	-	12K	E	9K	-	9K	7K		
9K	E	9K	E	9K	-	9K	7K		
12K	E	9K	E	9K	-	9K	7K		
18K	-	9K	E	9K	-	9K	7K		
24K	A, C	-	9K	E	9K	-	9K		
12K	E	12K	E	9K	-	9K	7K		
18K	-	12K	E	9K	-	9K	7K		
9K	E	9K	E	9K	-	9K	7K		
12K	E	9K	E	9K	-	9K	7K		
18K	-	9K	E	9K	-	9K	7K		
24K	A, C	-	9K	E	9K	-	9K		
12K	E	12K	E	9K	-	9K	7K		
18K	-	12K	E	9K	-	9K	7K		
9K	E	9K	E	9K	-	9K	7K		
12K	E	9K	E	9K	-	9K	7K		
18K	-	9K	E	9K	-	9K	7K		
24K	A, C	-	9K	E	9K	-	9K		
12K	E	12K	E	9K	-	9K	7K		
18K	-	12K	E	9K	-	9K	7K		
9K	E	9K	E	9K	-	9K	7K		
12K	E	9K	E	9K	-	9K	7K		
18K	-	9K	E	9K	-	9K	7K		
24K	A, C	-	9K	E	9K	-	9K		
12K	E	12K	E	9K	-	9K	7K		
18K	-	12K	E	9K	-	9K	7K		
9K	E	9K	E	9K	-	9K	7K		
12K	E	9K	E	9K	-	9K	7K		
18K	-	9K	E	9K	-	9K	7K		
24K	A, C	-	9K	E	9K	-	9K		
12K	E	12K	E	9K	-	9K	7K		
18K	-	12K	E	9K	-	9K	7K		
9K	E	9K	E	9K	-	9K	7K		
12K	E	9K	E	9K	-	9K	7K		
18K	-	9K	E	9K	-	9K	7K		
24K	A, C	-	9K	E	9K	-	9K		
12K	E	12K	E	9K	-	9K	7K		
18K	-	12K	E	9K	-	9K	7K		
9K	E	9K	E	9K	-	9K	7K		
12K	E	9K	E	9K	-	9K	7K		
18K	-	9K	E	9K	-	9K	7K		
24K	A, C	-	9K	E	9K	-	9K		
12K	E	12K	E	9K	-	9K	7K		
18K	-	12K	E	9K	-	9K	7K		
9K	E	9K	E	9K	-	9K	7K		
12K	E	9K	E	9K	-	9K	7K		
18K	-	9K	E	9K	-	9K	7K		
24K	A, C	-	9K	E	9K	-	9K		
12K	E	12K	E	9K	-	9K	7K		
18K	-	12K	E	9K	-	9K	7K		
9K	E	9K	E	9K	-	9K	7K		
12K	E	9K	E	9K	-	9K	7K		
18K	-	9K	E	9K	-	9K	7K		
24K	A, C	-	9K	E	9K	-	9K		
12K	E	12K	E	9K	-	9K	7K		
18K	-	12K	E	9K	-	9K	7K		

Cassette Panels



PB-700KB
 Panel for 2'x2' Cassette
 (Includes WJ01X24721 controller)
 Must order PB-700KB separately
 with the purchase of compact
 cassette models:
 AB09SC2VHA | AB12SC2VHA
 AB18SC2VHA



PB-950KB
 Panel for 3'x3' Cassette
 Must order PB-950KB separately
 with the purchase of
 large cassette models:
 AL24LP2VHA | AL36LP2VHA
 AL48LP2VHA | USYL24UCDDA
 USYL30UCDDA | USYL36UCDDA
 USYL42UCDDA | USYL48UCDDA



PB-950KD
 Panel for 3'x3' Cassette
 (Includes WJ01X24721 controller)
 Must order PB-950KD separately
 with the purchase of
 large cassette models:
 AL24LP2VHA | AL36LP2VHA
 AL48LP2VHA | USYL24UCDDA
 USYL30UCDDA | USYL36UCDDA
 USYL42UCDDA | USYL48UCDDA

Return & Supply Air Grilles



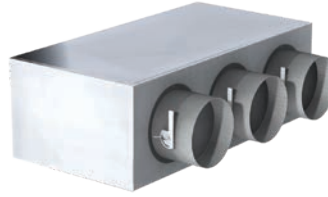
PAD0890RA
 Optional return air grille for Slim Duct models:
 AD07SL2VHB | AD09SL2VHB | AD12SL2VHB

PAD1210RA
 Optional return air grille for Slim Duct model:
 AD18SL2VHB

PAD0890SA
 Optional supply air grille for Slim Duct models:
 AD07SL2VHB | AD09SL2VHB | AD12SL2VHB

PAD1210SA
 Optional supply grille for Slim Duct model:
 AD18SL2VHB

Supply Plenums



UAPT0912A
 Supply Plenum for
 Ducted Indoor 09K, 12K
 Fits on the following Models:
 USYM09UCDSA | USYM12UCDSA

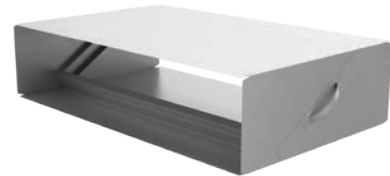


UAPT1824A
 Supply Plenum for
 Ducted Indoor 18K and 24K Fits on
 the following Models:
 USYM18UCDSA | USYM24UCDSA



UAPT3048A
 Supply Plenum for
 Ducted Indoor 24K through 48K Fits
 on the following Models:
 USYM24UCDDA | USYM30UCDDA
 USYM36UCDDA | USYM42UCDDA
 USYM48UCDDA

MERV Return Air Filter Boxes



UAMFB0912A
 Merv Return Air Filter Box for
 Ducted Indoor 09K and 12K Fits
 on the following Models:
 USYM09UCDSA | USYM12UCDSA

UAMFB1824A
 Merv Return Air Filter Box for
 Ducted Indoor 18K and 24K
 Fits on the following Models:
 USYM18UCDSA | USYM24UCDSA
 USYM24UCDDA

UAMFB3048A
 Merv Return Air Filter Box for
 Ducted Indoor 30K through 48K
 Fits on the following Models:
 USYM30UCDDA | USYM36UCDDA
 USYM42UCDDA | USYM48UCDDA

Haier controls allow you to take command of your environment. With convenient user-friendly button layouts and clear graphic displays, the system can be easily set to meet and maintain all comfort needs.

Wall Mounted Wired Remote Controllers



Color screen wired controller optional for Arctic, Advanced Plus, FlexFit Wall mount/cassette/slim duct



Wired controller is shipped with Slim Duct and High Static Duct. Optional for Arctic, Advanced Plus, and FlexFit Wall Mount or Cassettes.

Wireless Hand-Held Remote Controllers



Ships with Highwall equipped with motion sensor



Ships with large Cassette



Ships with Highwall and compact Cassette



Cool only remote (optional for purchase separately)

	YR-E16B	QACT17A
Power Supply	12V AC	12V AC
Controllable Indoor Groups	Up to 16	Up to 16
On/Off	•	•
Modes	Auto-Cool-Dry-Heat-Fan-Auto	Auto-Cool-Dry-Heat-Fan-Auto
Precise Temperature Control +/- 1F (+/- 0.5C)	•	•
Fan Speed Adjustment	•	•
Turbo	•	•
Quiet	•	•
Airflow Direction - Up Down	•	•
Airflow Direction - Left Right	•	•
Four-Way Cassette Blade Control	•	
Indoor Temperature Display	•	•
Filter Change Reminder	500 hr	500 hr
Clock	•	
Error Code Reporting/Recording	•	•
Control Lock	•	•
Daily Program	•	
Weekly Program	•	
Sleep	•	
Backlight	•	•
Fahrenheit/Celsius Display	•	•
Temperature Range Limit	•	•
Temperature Compensation	•	•
Static Pressure Setting	•	•
Groups Setting	•	•
Password	•	



WK-B

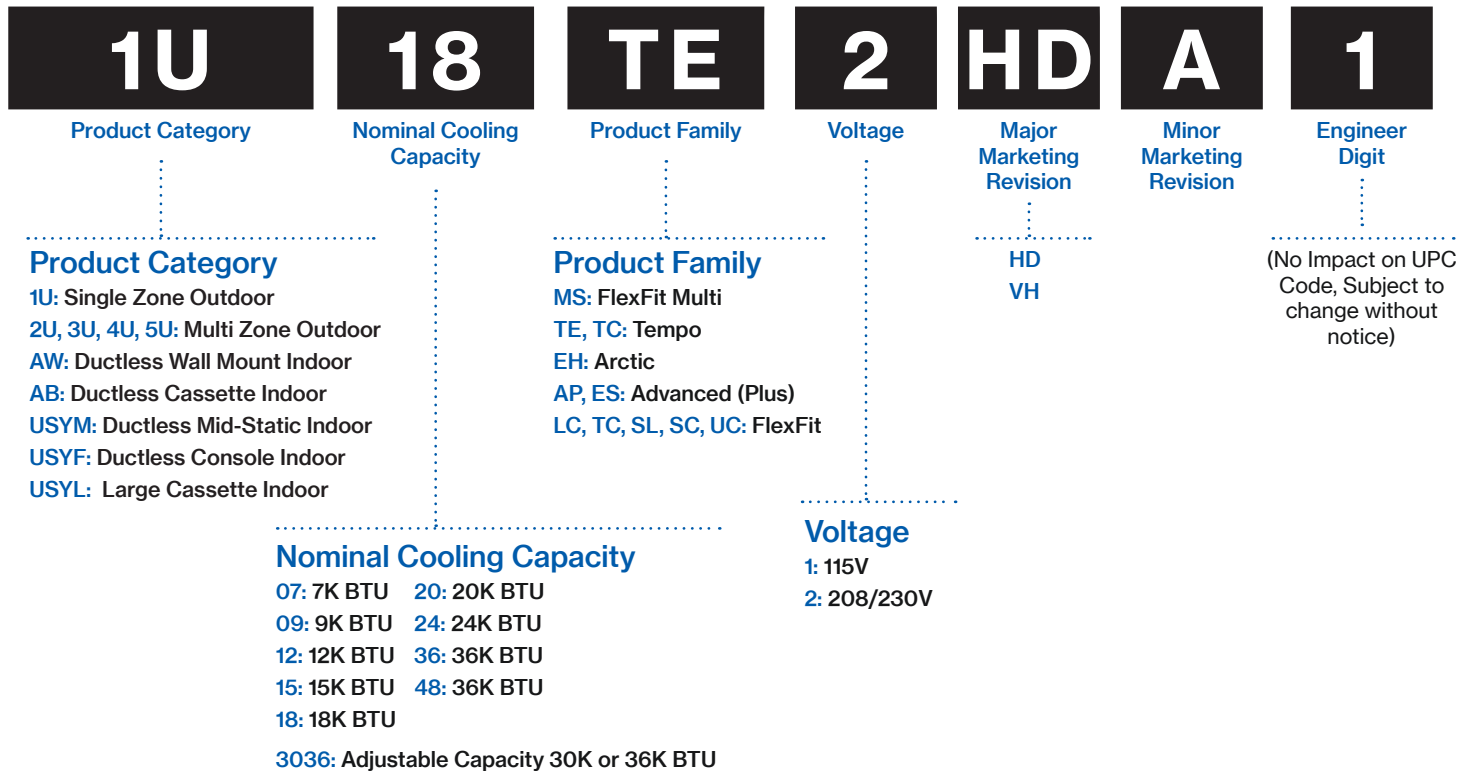
Wired controller interface kit, required when installing wired controllers YR-E17, YR-E16B or QACT17A on some highwall models (see compatibility charts for required applications).

	WJ26X27153	YR-HBS01	WJ01X24721	UCT30RWA
24-Hour Time		•		
Individual Control	•	•	•	•
Backlight	•	•	•	•
Up & Down Louver Oscillating Control	•	•	•	•
Left & Right Louver Oscillating Control	•	•	•	•
Four-Way Cassette Air Supply Control		•		
Child Lock	•	•	•	•
Indoor LED Display On/Off	•	•	•	•
Fahrenheit/Celsius Display	•	•	•	•
Precise Temperature Control +/- 1F (+/- 0.5C)	•	•	•	•
Motion Sensor	•			

*Remote controller WJ01X24721 and WJ26X27153 are shipped with indoor unit.

Quick Reference Guide Model Nomenclature

Ductless Product Nomenclature



Highwall Compatibility

	OUTDOOR UNITS															CONTROLLERS*																																		
	TEMPO					ADVANCED PLUS			ARCTIC			FLEXFIT PRO		ARCTIC MULTI		FLEXFIT MULTI			WJ01X24721	WJ26X27153	YR-HBS01	UCT30RWA	YR-E16B	YR-E17	GACT17A																									
	1U09TE1VHA	1U12TE1VHA	1U09TE2VHA	1U09TE2HDA	1U12TE2VHA	1U12TE2HDA	1U18TE2VHA	1U18TE2HDA	1U24TE2VHA	1U24TE2HDA	1U24TL2HFA	1U3036TL2HFA	1U09AP2VHA	1U12AP2VHA	1U15AP2VHA	1U18AP2VHA	1U24AP2VHA	1U09EH2VHE								1U12EH2VHE	1U18EH2VHE	1U24LP2HDA	1U3036LP2HDA	1U4248LP2HDA	1U24LP2VHA	1U36LP2VHA	1U48LP2VHA	2U20EH2HDA	3U24EH2HDA	4U36EH2HDA	2U18MS2HDA	3U24MS2HDA	4U36MS2HDA	5U42MS2HDA										
INDOOR HIGHWALL UNITS																																																		
AW09TE1VHA	✓																																●		○	⊙	⊙	⊙												
AW12TE1VHA		✓																																			○	⊙	⊙	⊙										
AW09TE2VHA			✓																																				○	⊙	⊙	⊙								
AW12TE2VHA				✓																																				○	⊙	⊙	⊙							
AW18TE2VHA					✓																																				○	⊙	⊙	⊙						
AW24TE2VHA						✓																																			○	⊙	⊙	⊙						
AW24TL2HFA										✓												✓																			○	○	○	○						
AW30TL2HFA											✓												✓																		○	○	○	○						
AW36TL2HFA											✓												✓																		○	○	○	○						
AW09ES2VHB												✓																														○	⊙	⊙	⊙					
AW12ES2VHB													✓																														○	⊙	⊙	⊙				
AW15ES2VHB														✓																														○	⊙	⊙	⊙			
AW18ES2VHB															✓																													○	⊙	⊙	⊙			
AW24ES2VHB																✓																												○	⊙	⊙	⊙			
AW09EH2VHD																																													●	○	○	○		
AW12EH2VHD																																													●	○	○	○		
AW18EH2VHD																																													●	○	○	○		
AW07TC2HDA																											✓	✓	✓	✓	✓	✓	✓	✓	✓	✓	✓	✓	✓	✓	✓	✓	✓	✓	✓	✓	●	○	○	○
AW09TC2HDA			✓																									✓	✓	✓	✓	✓	✓	✓	✓	✓	✓	✓	✓	✓	✓	✓	✓	✓	✓	✓	●	○	○	○
AW12TC2HDA				✓																								✓	✓	✓	✓	✓	✓	✓	✓	✓	✓	✓	✓	✓	✓	✓	✓	✓	✓	●	○	○	○	
AW18TC2HDA					✓																							✓	✓		✓	✓	✓	✓	✓	✓	✓	✓	✓	✓	✓	✓	✓	✓	●	○	○	○		
AW24TC2HDA									✓																				✓		✓	✓	✓	✓	✓	✓	✓	✓	✓	✓	✓	✓	✓	✓	●	○	○	○		
AW24LP2VHA																										✓																				●	○	⊙	⊙	
AW36LP2VHA																										✓																					●	○	⊙	⊙

* ● = Standard Controller.
 ○ = Optional Controller.
 ⊙ = Optional Controller requires WK-B adapter.
 Remote controllers WJ01X24721 and WJ26X27153 are shipped with indoor unit.

Indoor/Outdoor Compatibility Charts

Cassette, Slim Duct, MSP Duct & Console Compatibility

	OUTDOOR UNITS																CONTROLLERS*																								
	TEMPO						ADVANCED PLUS			ARCTIC			FLEXFIT PRO		ARCTIC MULTI		FLEXFIT MULTI			WJ01X24721	WJ26X27153	YR-HBS01	UCT30RWA	YR-E16B	YR-E17	QACT17A															
	1U09TE1VHA	1U12TE1VHA	1U09TE2VHA	1U09TE2HDA	1U12TE2VHA	1U12TE2HDA	1U18TE2VHA	1U18TE2HDA	1U24TE2VHA	1U24TE2HDA	1U24TL2HFA	1U3036TL2HFA	1U09AP2VHA	1U12AP2VHA	1U15AP2VHA	1U18AP2VHA	1U24AP2VHA	1U09EH2VHE	1U12EH2VHE								1U18EH2VHE	1U24LP2HDA	1U3036LP2HDA	1U4248LP2HDA	1U24LP2VHA	1U36LP2VHA	1U48LP2VHA	2U20EH2HDA	3U24EH2HDA	4U36EH2HDA	2U18MS2HDA	3U24MS2HDA	4U36MS2HDA	5U42MS2HDA	
INDOOR CASSETTE UNITS																																									
AB09SC2VHA																	✓										✓	✓	✓	✓	✓	✓	✓	●			○	○	○	○	
AB12SC2VHA																		✓										✓	✓	✓	✓	✓	✓	✓	●			○	○	○	○
AB18SC2VHA																			✓									✓	✓		✓	✓	✓	●			○	○	○	○	
AL24LP2VHA																										✓			✓								●	○	○	○	○
AL36LP2VHA																										✓											●	○	○	○	○
AL48LP2VHA																										✓											●	○	○	○	○
USYL24UCDDA																				✓																●		○	○	○	○
USYL30UCDDA																					✓															●		○	○	○	○
USYL36UCDDA																					✓															●		○	○	○	○
USYL42UCDDA																						✓														●		○	○	○	○
USYL48UCDDA																							✓													●		○	○	○	○
INDOOR DUCTED UNITS																																									
AD07SL2VHB																											✓	✓	✓	✓	✓	✓	✓	✓				○	●	○	
AD09SL2VHB																												✓	✓	✓	✓	✓	✓	✓	✓				○	●	○
AD12SL2VHB																												✓	✓	✓	✓	✓	✓	✓	✓				○	●	○
AD18SL2VHB																													✓	✓		✓	✓	✓				○	●	○	
USYM09UCDSA																		✓										✓	✓	✓	✓	✓	✓	✓	✓				○	○	○
USYM12UCDSA																			✓									✓	✓	✓	✓	✓	✓	✓	✓				○	○	○
USYM18UCDSA																			✓									✓	✓		✓	✓	✓	✓	✓				○	○	○
USYM24UCDSA																												✓			✓	✓						○	○	○	
USYM24UCDDA																					✓																	○	○	○	
USYM30UCDDA																						✓																	○	○	○
USYM36UCDDA																						✓																	○	○	○
USYM42UCDDA																							✓																○	○	○
USYM48UCDDA																								✓															○	○	○
AM36LP2VHA																											✓												○	●	○
AM48LP2VHA																											✓											○	●	○	
INDOOR CONSOLE UNITS																																									
USYF09UCDWA																		✓									✓	✓	✓	✓	✓	✓	✓	✓	●		○	○	○	○	
USYF12UCDWA																			✓									✓	✓	✓	✓	✓	✓	✓	✓	●		○	○	○	○
USYF18UCDWA																			✓									✓	✓		✓	✓	✓	✓	✓	●		○	○	○	○

* ● = Standard Controller.
 ○ = Optional Controller.
 ⊙ = Optional Controller requires WK-B adapter.
 Remote controllers WJ01X24721 and WJ26X27153 are shipped with indoor unit.
 MSP ducted units do not include controller. A controller must be ordered separately.
 Cassette does not ship with controller. Panel must be purchased separately and ships with controller.