



POWERED BY  
 SmartHQ™

# DUCTLESS HEAT PUMP SYSTEMS



**GE APPLIANCES**  
*a Haier company*

**AIR&WATER**  
SOLUTIONS

A FULL RESIDENTIAL HVAC LINE THAT'S

# PROCENTRIC

GE Appliances' residential HVAC equipment is designed with the HVAC pro front and center. This full line of ductless HVAC products with the GE name is a promise of quality, durability, performance - and, above all, our commitment to you, the pro.



## PROMOTION

An iconic brand trusted in 50% of U.S. households\* is easy for you to **PRO**mote

## PROACTIVE

You'll get **PRO**active support and training from a dedicated HVAC technical team

## PROVIDE

We **PRO**vide a full lineup of residential ductless HVAC products

## PRODUCTIVE

Exclusive features make installation faster and you more **PRO**ductive

\*Based on major appliances; does not include HVAC products.

# A BRAND LIKE NO OTHER

GE Appliances' roots run deep — we've got a long history of making top-of-the-line appliances that pros recommend and homeowners trust. That legacy continues with our full line of ductless HVAC built with the HVAC professional in mind.

PROcentric means helping you win at the kitchen table, with a brand that is trusted in 50 percent of US homes.\* That kind of equity is invaluable to homeowners who know our reputation for quality, reliability, and innovation.



\*Based on major appliances; does not include HVAC products.



# PROVIDING

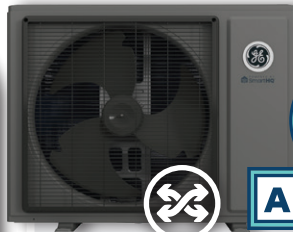
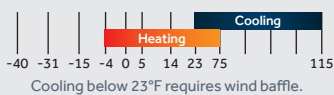
A FULL LINEUP OF DUCTLESS SOLUTIONS

## SINGLE ZONE



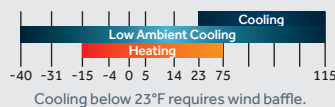
- Up to 23 SEER2; 9.5 HSPF2
- 09/12K 115V options with basepan heater
- 09/12/18/24K 230V options with highwall matches

#### OPERATING RANGE (°F):



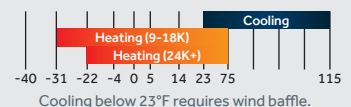
- Up to 23 SEER2; 9.5 HSPF2
- Low ambient heating down to -15°F (built-in basepan heater)
- -40°F low ambient cooling with wind baffle & top cover (sold separately)

#### OPERATING RANGE (°F):

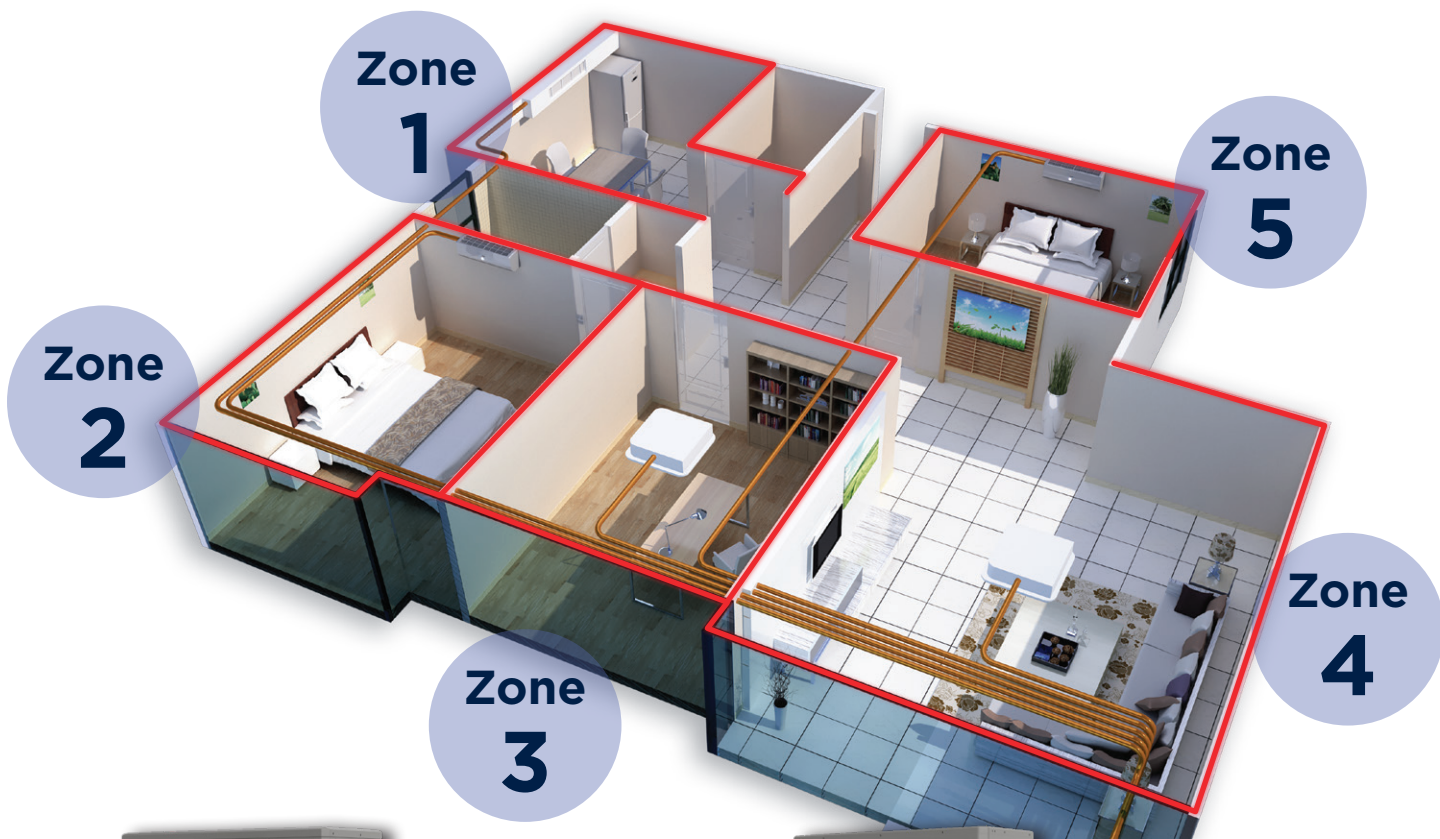


- Up to 27 SEER2; 11 HSPF2
- Cold climate compressor with basepan heater allows low ambient heating at -31°F
- Warm air in extreme conditions; up to 100% rated heating capacity at 5°F

#### OPERATING RANGE (°F):

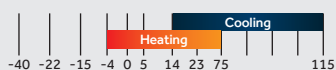


# MULTI-ZONE



- Up to 24 SEER2; 10.0 HSPF2
- Provides ~ 65% heating capacity at 5°F

#### OPERATING RANGE (°F):



Cooling below 23°F requires wind baffle.



- Up to 23 SEER2; 10.5 HSPF2
- Built-in basepan heater allows operating down to -22°F
- Provides ~ 90% heating capacity at 5°F

#### OPERATING RANGE (°F):



Cooling below 23°F requires wind baffle.



= compatible with highwall, cassette, console & ducted indoor units (varies by model).

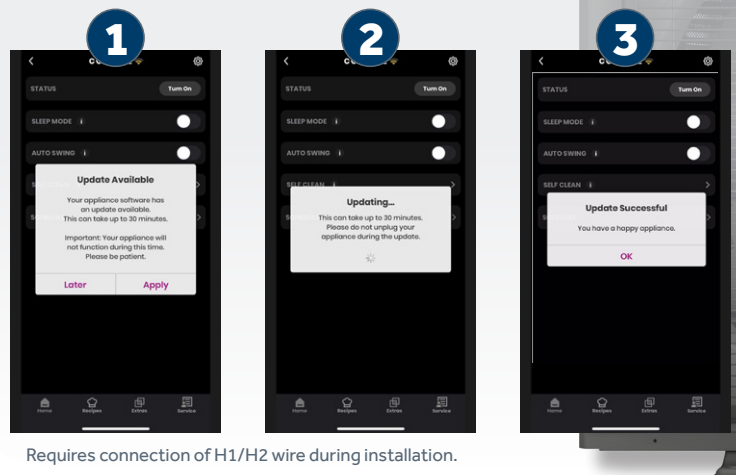
# FEATURES THAT MAKE YOU MORE PRODUCTIVE

## UPDATES **MADE EFFORTLESS**

### OVER-THE-AIR (OTA) UPDATES

- Allows the system to get smarter over time with remote feature/mode additions & improvements.
- Enables SmartHQ™ Service to read both the indoor & outdoor unit data when connected to either unit.

### EASY AS...



Requires connection of H1/H2 wire during installation.

## CONTROL **MADE SIMPLE**



Communicate digitally for real-time diagnosis



Identify root cause of issues quickly and effectively



Extend the life of the system through proactive maintenance



### CONVENIENCE

With SmartHQ™, we make your customer's lives easier by helping them stay in control no matter where they are - like allowing them to start their unit on the way home.

### VOICE CONTROL

Simply connect one or more systems to WiFi for hands-free temperature control.

Download from the App Store or Google Play.



SmartHQ™ Service module must be purchased separately.







## QUIET TECHNOLOGY

State-of-the-art inverters use smaller engines and reduce noise from startup to shutdown.

Most units come with a quiet mode, reducing noise while maintaining optimal heating and cooling performance.



## HIGHER SEER2, **LOWER COST**

With efficiency ratings up to 27 SEER2, homeowners can save more money on energy bills.

Product across all series may qualify for homeowner rebates & tax credits.



## READY FOR **EXTREMES**

Unyielding durability. Tested in extreme environments to perform in even the most intense climates.

With low ambient heating down to -31°F and cooling power up to 115°F, your homeowners will stay comfortable no matter the season.

Low ambient cooling down to -40°F, ideal for server room applications.



## **R454B** REFRIGERANT

79% reduction in GWP compared to R410A with zero ozone depletion potential.

Cooling performance equivalent to, or even better than R410A, with large cooling capacity and high-efficiency.

Choosing a lower GWP refrigerant prepares our equipment for future regulations, minimizing changes to our current design and reducing major product modifications in the future, allowing you to be more **PRO**ductive.

# PROACTIVE

## SERVICE AND SUPPORT

## CONFIDENCE X3

### TRAINING

Our dedicated HVAC training team is here to provide a full curriculum to help you learn the ins and outs of our product. Through GE Appliances' Air & Water Solutions Learning Academy, you'll be able to learn about products across our portfolio and stay up to date on your HVAC knowledge.



### SUPPORT

Our full team of HVAC experts support the product and pros like you in the field. From leaders who have real-world field experience to specially trained front-line call-takers, we've got a team of experts to provide exactly the level of support you deserve.

### WARRANTY

Most service parts are available for next-day shipment or already available at your local distributor. And with our flexible warranty policy, many can be scrapped at the time of replacement without having to wait for credit.



**GE APPLIANCES**  
a Haier company

**AIR&WATER**  
SOLUTIONS