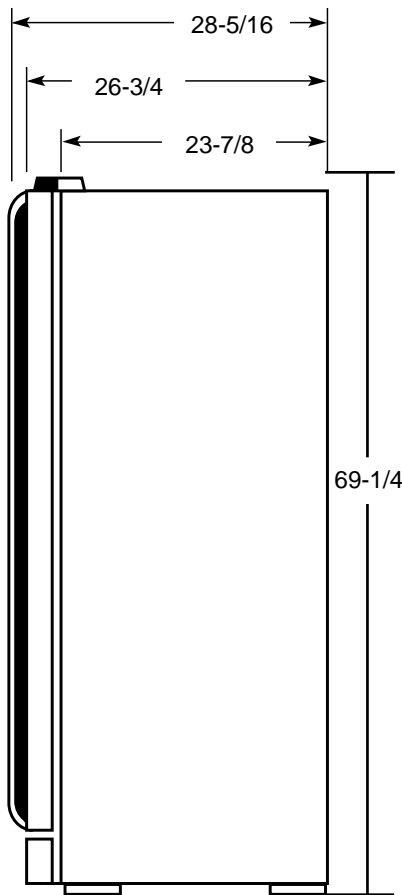




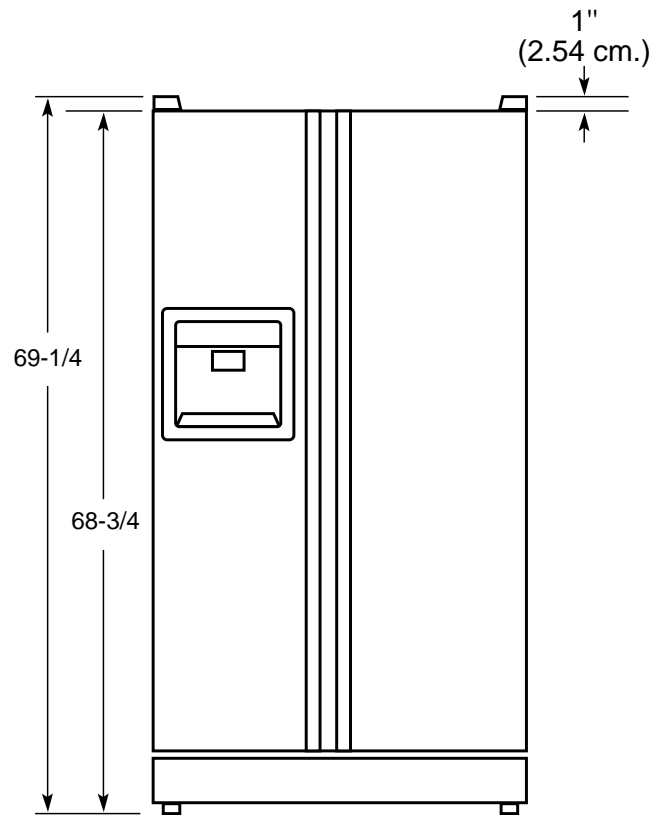
Profile™

PSC23SSN – GE Profile Arctica™ 22.6 Cu. Ft. CustomStyle™ Side-by-Side Refrigerator with Dispenser

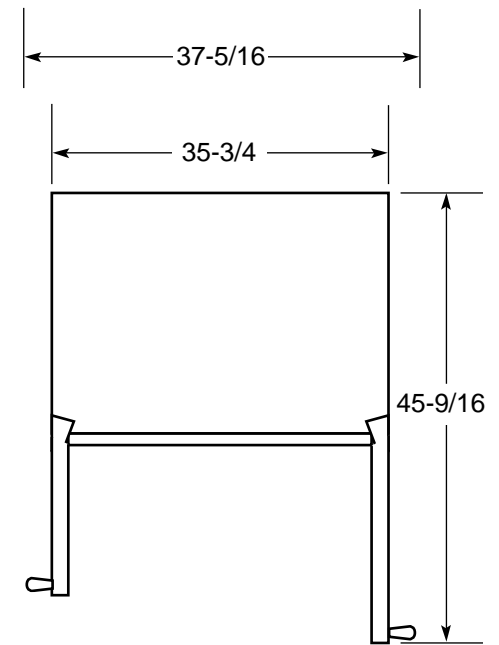
Case Dimensions (in inches/cm.)



Side View



Front View



Top View



Total volume and shelf area are calculated by the Association of Home Appliance Manufacturers' standards.



Listed by Underwriters Laboratories

Specification Created 8/02

For answers to your Monogram®, GE Profile™ or GE appliance questions, visit our website at GEAppliances.com or call GE Answer Center® service, 800.626.2000.



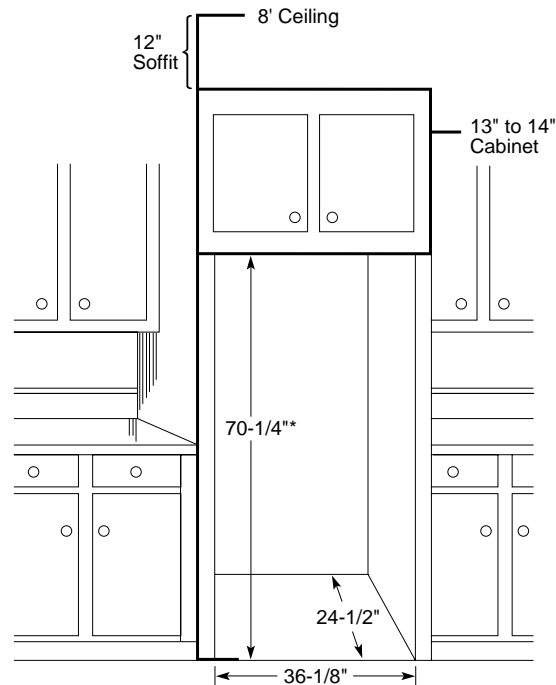
Profile™

PSC23SSN – GE Profile Arctica™ 22.6 Cu. Ft. CustomStyle™ Side-by-Side Refrigerator with Dispenser

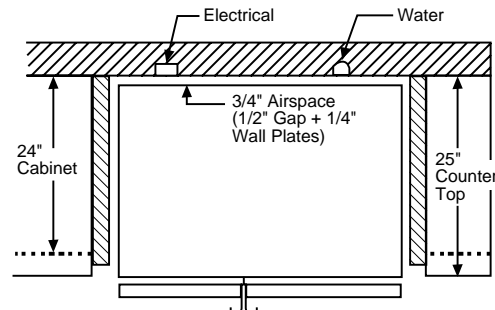
Rough-In Dimensions

Standard, New Construction and Replacement Installation

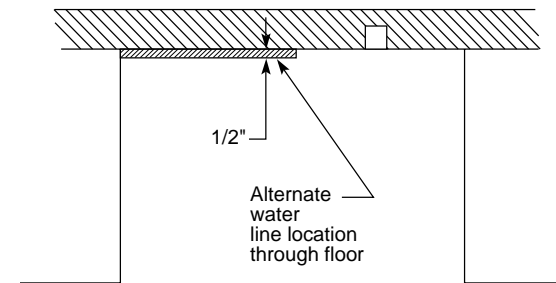
- All wall/floor molding should be removed prior to installation.
- Water recess on rear wall recommended to prevent water line damage. 48" minimum length 1/4" diameter water line tubing recommended.
- When possible, recess both copper water line and electrical outlet. (See local codes)
- Front and rear leveling legs are adjustable for the built-in look. (See owner's manual)
- If optional collar trim kit is to be used or anticipated, see collar trim installation on next page for different rough-in dimensions.



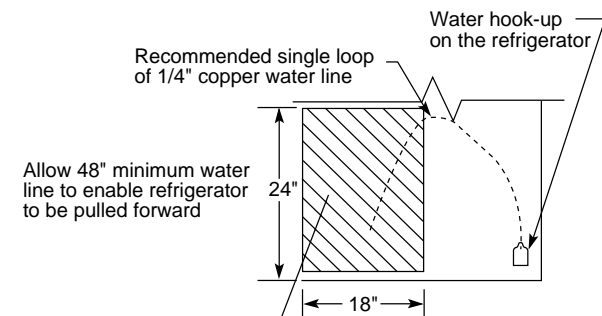
*The rough-in dimension of 70-1/4" is minimum and is measured from the finished floor to top of opening (or the underside of the overhead cabinets). For Models with Trim Kit: If frameless style cabinets are planned for above the refrigerator, you may need to consider adding a maximum of 1/4" (70-1/2") to height of opening to allow additional clearance between cabinet doors and top of refrigerator trim when cabinet doors are in open position.



Installation of Water and Electrical Outlets



Top View



Rear Wall View



Total volume and shelf area are calculated by the Association of Home Appliance Manufacturers' standards.

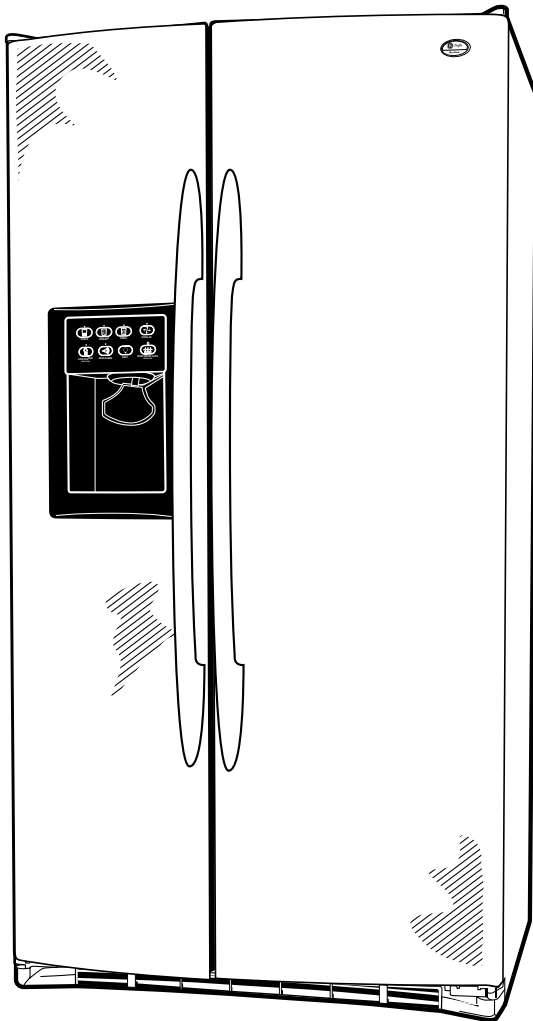


Listed by Underwriters Laboratories



Profile™

PSC23SSN – GE Profile Arctica™ 22.6 Cu. Ft. CustomStyle™ Side-by-Side Refrigerator with Dispenser



Features and Benefits

- 22.6 cu. ft. Capacity (Fresh Food 14.4 cu. ft./Freezer 8.24 cu. ft.)
- CustomCool™ Technology Chills Food and Beverages in Minutes and Thaws Food Safely and Quickly
- ClimateKeeper™ System Temperature Management System – an Electronic System That Helps Keep Food Fresh
- Digital Temperature Display Shows Actual Temperature Inside Refrigerator
- Upfront Electronic Touch Temperature Controls are Precise and Easy to Set
- TurboCool™ Setting
- SmartWater™ Plus Provides Cleaner, Better Tasting Water Cubed and Crushed Ice Through the LightTouch! Dispenser (with Door Alarm and Child Lock)
- Integrated Shelf Support System with QuickSpace™ Shelf Allows for Maximum Flexibility and Easily Accommodates Taller Items
- Full-Extension Slide 'N Store™ Freezer Baskets Fully Extend Making Freezer Contents More Accessible
- FrostGuard™ Technology
- Quick Ice™ Setting Provides up to 50% More Ice Than Normal Settings
- Door Alarm
- Child Lock
- 3 Wire Tilt-Out Storage Bins (2 Adjustable)
- Tri-Level Lighting
- 5 ClearLook™ Modular Fresh Food Door Shelves (4 Adjustable)
- 3 Adjustable Glass Fresh Food Cabinet Shelves (2 Slide-Out, Spill-Proof)
- Electronic Icemaker
- Premium Quiet Design
- Sculptured Handle Provides Sleek, Elegant Appearance
- Model PSC23SSNSS – Stainless steel