



# clothes care

## Contract Sales

New product introductions 2006

GE Profile™ and GE® washers and dryers



imagination at work

## GE Profile™ washer quick pitch

Wash big. Dry fast. Get on with life.





A new wave in topload technology has arrived. GE Profile™ and GE® topload washers now feature the revolutionary **HydroWave™ wash system**, designed for superior cleaning performance and greater dependability.

The HydroWave wash system agitates with a **variable speed**, wave-like motion to effectively clean everything from the most heavily soiled clothes to the finest delicates.

The HydroWave wash system is **surprisingly quiet**. No more “chug, chug, chugging”—just a smoother agitation that makes it possible to bring the washer out of the basement and into the kitchen or other living area.

## GE Profile™ clothes care quick pitch

Wash big. Dry fast. Get on with life.



GE Profile™ models WPRE8100GWT and DPSE810EG/GGWT



## GE Profile washers



Only GE has it!

### Performance

**New HydroWave™ wash system** has variable speeds to match the wash action to the clothing type. Longer, slower travel through the water provides great cleaning performance and is gentler on your clothes.



### Capacity

**King-size 3.5 cu. ft. ribbed stainless steel wash basket** washes more at once, which means fewer loads and less time spent doing laundry.



Only GE has it!

### Quiet

**The new HydroWave wash system** was designed to be quieter. Lets you do the wash any time, whether it's night time or nap time.



### Dependability

The HydroWave wash system's **variable speed motor** is engineered with far fewer parts than conventional topload washers, providing great durability and ease of maintenance.

## GE Profile dryers



Only GE has it!

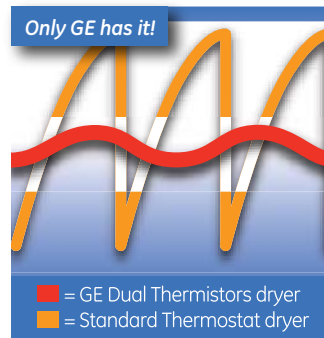
### Performance

**Delicate cycle with extra low heat setting** helps protect fine garments from shrinkage and wear by maintaining an average fabric temperature of 125°F, the lowest delicate cycle temperature available.



### Capacity

**7.0 cu. ft. super capacity stainless steel dryer drum** handles large-size items and family-size loads, without snagging or tearing fabrics.



### Clothes Care

**Dual electronic thermistors** maintain constant, even heat for shorter dry times and better fabric care.



### Dependability

**Stainless steel drum** resists rust, won't chip or peel.

GE® electronic clothes care quick pitch

Wash big. Dry fast. Get on with life.



GE models WWSE5240GWW and DWSR463EG/GGWW

## GE washers

Only GE has it!



### Performance

**New HydroWave™ wash system** has variable speeds to match the wash action to the clothing type. Longer, slower travel through the water provides great cleaning performance and is gentler on your clothes.

### Capacity

**3.2 cu. ft. ribbed ExtrAction™ wash basket** offers increased surface area to “squeeze” more water from clothes during the spin cycle, resulting in reduced dry times.



Only GE has it!



### Quiet

**The new HydroWave wash system** was designed to be quieter. Lets you do the wash any time, whether it's night time or nap time.

### Dependability

The HydroWave wash system's **variable speed motor** is engineered with far fewer parts than conventional topload washers, providing great durability and ease of maintenance.



## GE dryers

### Performance

**Auto Dry System** monitors air temperature shutting off the dryer when the proper temperature is reached.



### Capacity

**7.0 cu. ft. super capacity** handles king-size items and family-size loads, without snagging or tearing fabrics.



### Clothes Care

**Quick Fluff** freshens or fluffs already dry clothing, fabrics, linens and pillows with no-heat tumbling.



### Dependability

**DuraDrum™ dryer interior** with coated galvanized steel provides long-lasting durability and bright-white interior for easy loading and unloading.



## What's new: HydroWave™ wash system with exceptional quiet

Wash big. Dry fast. Get on with life.

New HydroWave™ wash action gives GE Profile™ and GE® topload washers the advantage of variable agitation speeds designed to match the clothing type and cleaning needs of every load. The smooth, 360-degree stroke of the agitator moves clothes through the water more slowly, delivering thorough – yet completely gentle – cleaning performance.



GE HydroWave after 20 washes\*



Leading competitor after 20 washes\*



The HydroWave wash system is surprisingly quiet. Smoother agitation makes it possible to bring the washer out of the basement and into the kitchen or other living area.

\*New clothes washed in normal load, after 20 washes.



## Distinct GE Profile and GE appearances for every laundry room



GE Profile model WPRE8100GWT

### Curves and color add style

The boldly curved control panel offers a sleek, modern look with real eye appeal. Control panels on GE Profile models are now available with a striking titanium-color finish.

### Countdown timer enhances convenience

An easy-to-see LED readout displays the time remaining until the end of the wash cycle so clothes can be removed promptly and placed in the dryer.

## Dryer updates make a perfect match



GE Profile model DPSE810EG/GGWT

### The dryer gets better, too

#### Updated appearance and countdown timer

The laundry pair is complete with the matching dryer, also sporting enhanced features your customers will appreciate. The dryer is designed with the same curved control panel that gives the washer its sleek, up-to-date appearance. The DPSE810 dryer is also equipped with its own LED countdown timer, so clothes can be removed promptly with less wrinkling.



GE model WWSE5240GWW

### User-friendly, ramped-up style

Easy-to-use rotary dial controls and convenient cycle status indicator lights highlight the newly redesigned GE control panel. Clean lines and a silver-tone backsplash enhance its overall appearance. The model shown matches dryer model DWSR463EG/GG.

## Feature gallery: GE Profile™ clothes care

Wash big. Dry fast. Get on with life.



GE Profile™ models WPRE8100GWT and DPSE810EG/GGWT

## GE Profile washers



### HydroWave™ Handwash

Cleans and cares for the finest fabrics by providing HydroWave Handwash—America's Gentlest Agitation!™



### Countdown timer

Manage your time better with a washer that shows how many minutes until the cycle is finished.



### 3.5 cu. ft. king-size capacity stainless steel ribbed basket

Allows you to wash more at once, which means less time doing laundry.



### Auto balance suspension system

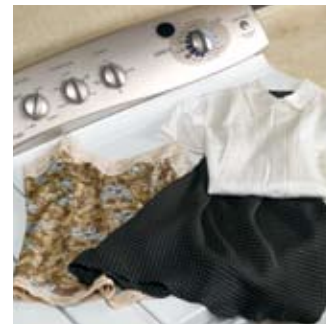
Handles the heaviest loads, without banging or walking.

## GE Profile dryers



### Towels cycle

This special cycle helps eliminate the guesswork of drying large bulky items with precise moisture sensors, ultimately saving you time and energy.



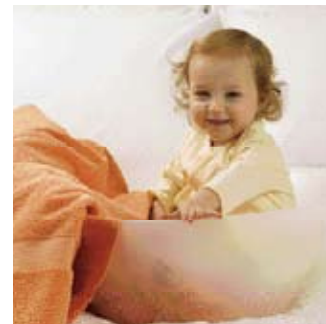
### Delicate cycle with extra-low heat setting

Helps protect fine garments from shrinkage and wear by maintaining an average fabric temperature of 125°F, the lowest delicate cycle temperature available.



### DRYEL® cycle

Works to remove stains and odors, refresh clothing and helps minimize wrinkles.



### Anti-bacterial cycle

Reduces certain types of bacteria by 99.9%.\* The anti-bacterial process occurs during the drying cycle by extending heated cycle time.

# Feature gallery: GE Profile™ control panels

## Washer



GE Profile model WPRE8100GWT

### Load size

Variable setting for load size to match laundry load.

### Temperature

Allows choice between seven PerfectTemp temperatures.

### Options

Provide selection of wash cycle options or option combinations of auto soak, extended spin and/or 2nd rinse.

### Estimated time remaining display

Displays the approximate time remaining until the end of the cycle.

### Wash cycles

Choose from the following wash cycles and turn the selector knob to your wash cycle of choice and press START to begin the cycle.

#### 1 Prewash

For removing surface dirt from heavily soiled clothes.

#### 2 Casuals

For wrinkle-free and permanent press items and knits.

#### 3 Cottons

For heavy to lightly soiled cottons, household linens, work and play clothes.

#### 4 Easy care

For wrinkle-free and permanent press items and knits.

#### 5 Delicates

For lingerie and special-care fabrics with light to normal soil.

#### 6 HydroWave™ hand wash

For items labeled handwashable with light soils. America's Gentlest Agitation!™

#### 7 Speed wash

For lightly soiled items that are needed in a hurry. Extra-small loads, such as soccer uniforms, can be washed and dried in as little as 30 minutes.

#### 8 Drain & spin

For draining the tub and spinning water out of the clothes.

#### 9 Quick rinse

For items that need a quick rinse. Great for bathing suits or for delicates that may need a quick rinse.

### Start

Pressing START will begin the cycle. Pressing START again or raising the lid will PAUSE the cycle and the cycle indicator light will blink.



## Dryer



GE Profile model DPSE810EG/GGWT

### Options

Provide selection of end-of-cycle and/or extended tumble signals. Extended tumble provides approximately 20 minutes of no-heat tumbling after clothes are dry to minimize wrinkles.

### Temperature

Regular or cottons/regular heat—For regular to heavy cottons. Medium or easy care/medium heat —For synthetics, blends, delicates and items labeled permanent press.

### Dryness

Allows choice between four dryness levels.

### Drying cycles

#### 1 Cottons

For cottons and most linens. Easy care/permanent press—For wrinkle-free, permanent press, delicate items and knits.

#### 2 Timed dry

Set the cycle selector at the desired drying time.

#### 3 Damp dry

For leaving items partially damp.

#### 4 Dewrinkle

For removing wrinkles from items that are clean and dry or that are very lightly damp.

#### 5 Quick fluff

For freshening or fluffing already dry clothing, fabrics, linens, and pillows. Use with FLUFF NO HEAT. Provides 10 minutes of no-heat tumbling.

#### 6 Towels

Helps eliminate the guesswork of drying large bulky items.

#### 7 Knits

For knit fabrics ranging from casual sweatshirt fleece to elegant stretch velvets.

#### 8 DRYEL®

Works to remove stains and odors, refreshes clothing and helps minimize wrinkles.

#### 9 Anti-bacterial

Reduces certain types of bacteria by 99.9%\*. The anti-bacterial process occurs during the drying cycle by extending heated cycle time. Choose this cycle to reduce contagious microorganisms, including but not limited to: *Staphylococcus*, *Pseudomonas aeruginosa* and *Klebsiella pneumoniae*.

#### 10 Delicates

For fine washables, including nylon, spandex, rayon, lace, silks and stuffed animals.

### Delicates/low heat

On some models. For delicates, synthetics and items labeled tumble dry low. Fluff/no heat—For fluffing items without heat. Use the TIMED DRY cycle.

Automatic cycles automatically determine fabric dryness. Select LESS DRY if you want your clothes slightly damp at the end of the drying cycle. Select MORE DRY if you want them to feel drier. Timed cycles run for a selected time.

### Start

After closing the dryer door, select START. Opening the door while the dryer is ON will stop the dryer.

\*The Anti-bacterial cycle is certified by NSF International to NSF Protocol P9 Sanitation Performance of Residential Clothes Dryers.

## The Inside Story: GE Profile™ washers take better care of your clothes



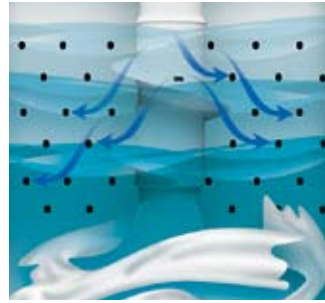
GE Profile™ models WPRE8100GWT and DPSE810EGWT

Only GE has it!



### The New HydroWave™ wash system consists of two elements:

Variable speed motor and electronic controls provide perfect clothes care.



### Power Rinse™ system with neutral drain

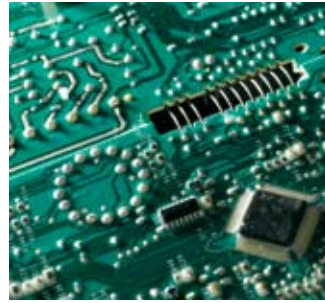
Uses a neutral drain system, which reduces the possibility of re-depositing soil and detergent on clean clothes.

Only GE has it!



### Dependability

The HydroWave wash system's variable speed motor is engineered with far fewer parts than conventional topload washers, providing great durability and ease of maintenance.



### Adaptive Logic™ system

Makes wash and dry cycle times more accurate, which means less guesswork.

Only GE has it!



### Auto balance suspension system

Rod-and-spring design keeps the washer balanced even if the load is unbalanced.



### ArmorGuard™ finish on galvanized steel cabinet

A seven-step paint process on galvanized steel using zinc phosphates prevents rusting.



### Stainless steel wash basket

Professional grade stainless steel wash basket stands up to the toughest loads and is built for years of reliable use.



### Sensor Dry Plus™

Dries clothes fast and gets clothes evenly dry, saving return trips to the dryer.



### Galvanized steel floor

Keeps noise inside and helps keep working parts clean.



### Stainless steel dryer basket

Won't chip or peel, and the smooth stainless surface won't snag fabrics or "catch" buttons, clips or zippers.

Dare to compare

Wash big. Dry fast. Get on with life.

New HydroWave™ wash action uses a 360-degree agitator stroke for thorough gentle cleaning that helps prevent fabric wear and color fading. How does the HydroWave system perform against the competition? Seeing is believing.

Wash performance after 20 washes\*



GE Profile™



Competitor



GE Profile



Competitor



GE Profile



Competitor

*\*New clothes washed in normal load, after 20 washes.*



# Dare to compare

Wash big. Dry fast. Get on with life.

The 3.5 cu. ft. capacity of GE Profile and GE® topload washers outdoes the competition. Larger capacity means fewer loads, and less time doing laundry!

## Capacity



GE Profile and GE capacity



Competitors' capacity

## Traditional topload competitive comparison

	Capacity cu. ft. (DOE)	Stainless steel	Ribbed basket
<b>GE Profile</b>	<b>3.5</b>	<b>Yes</b>	<b>Yes</b>
GE King-size	3.5	Yes	Yes
GE Super Capacity	3.2	No	Yes
Whirlpool	3.2	No	No
Kenmore Elite	3.2	No	No
Maytag	3.3	Yes	No

Capacity measurements per U.S. Department of Energy standards.  
\*See written warranty for details.

# Dare to compare

Wash big. Dry fast. Get on with life.

## Quiet

Change in sound level (dB)	Change in Perceived Loudness
3	Just perceptible
5	Noticeable difference
10	Twice (or 1/2) as loud
15	Large change
20	Four times (or 1/4) as loud

## GE quiets the competition

- The GE HydroWave™ wash system reduces laundry room sound levels by 9 dBA.

Brand	dBA
GE Profile Harmony™ wash system	47.3
New GE Profile™ and GE® HydroWave wash system	50.1
Current GE Profile and GE wash system	58.3

## Quiet cleaning makes quite a difference

- Sound turns to noise when it becomes loud enough to annoy or irritate.
- The GE HydroWave wash system gives you a quiet clean.

\*Internal GE sound pressure testing

## Dare to compare

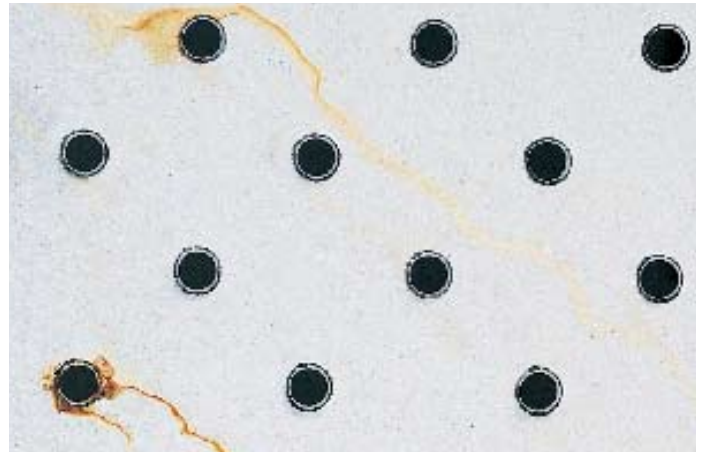
Wash big. Dry fast. Get on with life.

### Dependability.



#### Ribbed stainless steel basket

- Stands up to the toughest laundry challenges.
- Resists rust and won't chip or peel.



#### Competitors' porcelain basket

- Can rust which can result in snags and tears.



#### ExtrAction™ ribbed basket

- Removes up to 24% more moisture from clothes, versus a smooth basket, thereby, reducing dry times.
- Offers increased surface area to "squeeze" more water from clothes during the spin cycle, resulting in reduced dry times.



#### PermaTuf® II basket

- Designed to maintain a long-lasting, stain-free appearance with bright white interior. Molding provides a smooth surface and prevents snagging or damaging delicates.



#### ArmorGuard™ finish on galvanized steel cabinet

- Includes a seven step paint process on galvanized steel using zinc phosphates to prevent rusting.

Dare to compare

Wash big. Dry fast. Get on with life.

Special care and speed cycles.



Delicate Cycle with extra-low heat setting

Helps protect heat-sensitive fabrics by ensuring that the average fabric temperature is 125°F. Electronic sensors maintain proper temperature.

- Consumers can choose the right heat setting for the right fabric.

GE offers the lowest heat setting for the most delicate dry cycle among these brands.

Competitive comparison

Average fabric temperature	
GE Profile™	Extra-low 125°F
Whirlpool	Extra-low 132°F
Kenmore Elite	Extra-low 132°F
Maytag	Extra-low 130°F



Speed Wash/Dry

Fastest speed wash/dry system in the industry. Washes a golf outfit, soccer uniform or school uniform in about 17 minutes. Follow up with a 13-minute drying cycle on high heat for clothes that need to be “ready to go.”

- Allows consumers to quickly wash and dry “emergency” loads.
- Works doubletime on game day to get kids out the door.
- Cleans and dries a school uniform during breakfast.

Only GE has ready-to-go results in about 30 minutes!



## Show and tell

Wash big. Dry fast. Get on with life.

## Show your customer



GE HydroWave  
360° P.O.P.

Pub. No. 14-D246



GE Profile HydroWave™  
360° P.O.P.

Pub. No. 14-D256



GE interior washer  
lid P.O.P.

Pub. No. 14-D276



GE Profile interior  
washer lid P.O.P.

Pub. No. 14-D286



GE interior dryer  
door P.O.P.

Pub. No. 14-D296



GE Profile interior dryer  
door P.O.P.

Pub. No. 14-D306



Peek inside P.O.P.

Pub. No. 14-D326



LED static cling

Pub. No.



Washer card

Pub. No. 14-D266



Show your customers the new wash system and educate on HydroWave™. Align the card against the latch and give a quick thrust to pop the panel off. Show the variable speed motor. Discuss the smooth, quiet agitation. Explain the auto balance suspension system. Point out that GE washers are 100% front serviceable. Tell how the galvanized steel floor keeps noise inside.

## HydroWave™ wash systems

Wash big. Dry fast. Get on with life.

### Washer models include:

- HydroWave™ wash system • Auto balance suspension system • Bleach dispenser
- Fabric softener dispenser • GentlePower™ agitator



WPRE8100G



WWSE5240G

### GE Profile™ washer WPRE8100G

- HydroWave wash system
- 3.5 cu. ft. king-size capacity
- Stainless steel wash basket
- Variable speed motor
- Multiple wash/spin combinations
- 7 wash/rinse temperatures
- PerfectTemp™
- Bleach and fabric dispensers
- Extended spin
- Second rinse
- Prewash
- Variable water level
- LED countdown timer
- Speed wash

Matching dryer DPSE810EG/GG

### GE® washer WWSE5240G

- HydroWave wash system
- 3.2 cu. ft. super plus capacity
- 3 speed motor
- 5 wash spin speed combinations
- 24 cycles
- Ribbed ExtrAction™ basket
- PerfectTemp
- Bleach and fabric dispensers
- Extended spin
- Second rinse
- Prewash
- White with Silver Backsplash
- Silver backsplash matches with DWSR463EG

Matching dryer DWSR463EG/GG

## Dryer models include:

- 7.0 cu. ft. capacity • Variable end-of-cycle signal • Upfront lint filter • Quick Fluff



DPSE810EG/GG



DWSR463EG/GG

### GE Profile dryer DPSE810EG/GG

- 7.0 cu. ft. super capacity
  - Stainless steel dryer drum
  - Sensor Dry Plus™
  - Rotary electronic controls
  - LED countdown timer
  - 20 cycles
  - 5 heat selections
  - Towels cycle
  - Anti-bacterial cycle
  - DRYEL® cycle
  - Dewrinkle
  - Interior light
  - On/off EOC signal
  - Luxury quiet
- Matching washer WPRE8100G

### GE dryer DWSR463EG/GG

- 7.0 cu. ft. super capacity
  - 6 dry cycles
  - Quick fluff (no heat)
  - Variable EOC signal
  - Interior light
  - Quiet-by-Design
  - White with Silver Backsplash
- Matching washer WWSE5240G

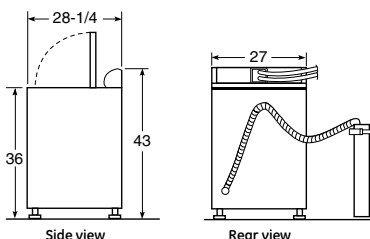
## GE Profile™ washers

	GE Profile		
	WPGT9360E	WPRE8100G	WPRE6100G
<b>Capacity</b>			
Capacity cu. ft.	4.0* king-size	3.5 king-size	3.5 king-size
<b>Energy</b>			
ENERGY STAR®	●		
<b>Controls</b>			
Electronic	LCD touchscreen display	Rotary	Rotary
Status indicators	LCD display	LED	LED
Cycle countdown	LCD	LED	LED
Adaptive capabilities	Water levels	Cycle time	Cycle time
HydroWash™	●		
HydroWave™		●	●
HydroHeater™	●		
Water temp system	RighTemp	PerfecTemp	PerfecTemp
Wash/rinse temps	4	7	5
Water levels	Adaptive fill	Variable	Variable
<b>Wash system</b>			
Wash basket	Stainless steel	Stainless steel	Stainless steel
Wash mechanism	Infusor™	GentlePower™ agitator	GentlePower agitator
Wash/spin combinations	Multiple	Multiple	Multiple
<b>Drive system</b>			
Variable-speed motor	Direct drive	●	●
Maximum spin speed	1010 RPM	630 RPM	630 RPM
<b>Dispensers</b>			
Bleach	Flow-Thru™ timed	●	●
Fabric softener	Flow-Thru timed	●	●
Detergent	Flow-Thru timed		
Wash Boost	Flow-Thru timed		
<b>Signals</b>			
End-of-cycle	Variable		
Add bleach	Variable		
<b>Wash cycles</b>			
Number of cycles	Multiple	Multiple	Multiple
Custom cycles	6		
<b>Cycle selections</b>			
Whites/cottons	●	●	●
Colors	●	●	
Dark colors	●	●	
Easy care	●	●	●
Handwash	●	●	
Specialty cycles	Multiple		
<b>Program options</b>			
Stain wash	Stain Inspector™		
Extra heavy soil	Super Clean		●
Heavy soil	●	●	●
Medium soil	●	●	●
Light soil	●	●	●
Extra light soil	●		●
<b>Special cycles</b>			
Delay start	●		
Speed wash	Quick Clean	●	
Prewash	●	●	
2nd rinse	●	●	●
Extended spin	●	●	●
Rinse and spin	●	●	●
Spin only	●	●	●
<b>Additional features</b>			
Quiet performance	Supreme	Deluxe	Deluxe
HydroView™ glass lid	●		
English/Spanish LCD option	●		
Color lid instructions		●	●
<b>Appearance</b>			
Colors available**	PL, WW	WT	WT
<b>Weights &amp; Dimensions</b>			
Approx. shipping weight (lbs.)	155	175	175

\*Washes equivalent amount of clothes as 4.0 cu. ft. agitator machine per IEC ratios.

\*\*PL = Dark Platinum, WW = White on white, WT = Titanium.

### Washer dimensions (in inches) GE Profile Harmony™ washer



### Washer specifications

#### Circuit requirements:

An individual, properly grounded branch circuit, with a three-prong grounding-type receptacle, protected by a 15- or 20-amp circuit breaker or time-delay fuse is required.

#### Electrical rating:

115V, 60Hz, 10A

#### Washer note:

Washer wall outlet must be located within 36" of service cord entry. Wall outlet must not be located behind dryer.

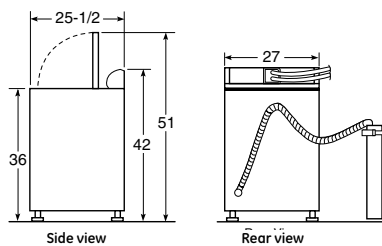


## GE® washers

	GE			
	WCRE6270G	WWSE5240G	WCSR4170D	WCSR2090D
<b>Capacity</b>				
Capacity cu. ft.	3.5 king-size	3.2 super plus	3.2 super plus	3.2 super
<b>Controls</b>				
Electronic	Rotary	Rotary		
Status indicators	●	●		
HydroWave™	●	●	●	●
Water temp system	PerfectTemp	PerfectTemp		
Wash/rinse temps	5	4	4	3
Water levels	Variable	4	4	3
<b>Wash system</b>				
Wash basket	Stainless steel	ExtraAction	ExtraAction	PermaTuf® II
Wash mechanism	GentlePower™ agitator	GentlePower agitator	GentlePower agitator	FlexCare™ agitator
Wash/spin combinations	5	5	4	2 - pulsed
<b>Drive system</b>				
Maximum spin speed	630 RPM	630 RPM	630 RPM	630 RPM
<b>Dispensers</b>				
Bleach	●	●	●	●
Fabric softener	●	●	●	
<b>Wash cycles</b>				
Number of cycles	27	24	17	9
<b>Cottons Regular</b>	●	●	●	Whites
Auto soak (30 min.)	●	●	●	
Auto soak (15 min.)	●		●	
Extra heavy soil	●	●		
Heavy soil	●	●	●	●
Medium soil	●	●	●	●
Light soil	●	●	●	●
Extra light	●			●
<b>Easy Care</b>	●	●	●	
Auto soak (15 min.)			●	
Heavy soil	●	●	●	
Medium soil	●	●	●	
Light soil		●	●	
Extra light soil			●	
<b>Casuals – Pulsed</b>	●	●		●
Heavy soil	●	●		●
Medium soil	●	●		●
Light soil				●
<b>Delicate</b>	●	●	●	
Medium soil	●	●		
Light soil		●	●	
Extra light soil			●	
<b>Handwash</b>	●			
Medium soil				
<b>Special cycles</b>				
Prewash		●	●	
2nd rinse	●	●	●	
Extended spin	●	●		
Rinse & spin (Quick rinse)	●	●	●	●
Spin only	●	●	●	●
<b>Additional features</b>				
Quiet performance	Deluxe	Quiet-by-Design	Quiet-by-Design	Quiet-by-Design
Color lid instructions	●	●	●	
<b>Appearance</b>				
Colors available*	WW**, CC	WW**	WW, CC	WW, CC
<b>Weights &amp; Dimensions</b>				
Approx. shipping weight (lbs.)	175	160	160	160

\*WW = White on white, CC = Bisque on bisque.

\*\*Silver backslash.

Washer dimensions  
(in inches)

## Washer specifications

## Circuit requirements:

An individual, properly grounded branch circuit, with a three-prong grounding-type receptacle, protected by a 15- or 20-amp circuit breaker or time-delay fuse is required.

## Electrical rating:

115V, 60Hz, 10A

## Washer note:

Washer wall outlet must be located within 36" of service cord entry. Wall outlet must not be located behind dryer.

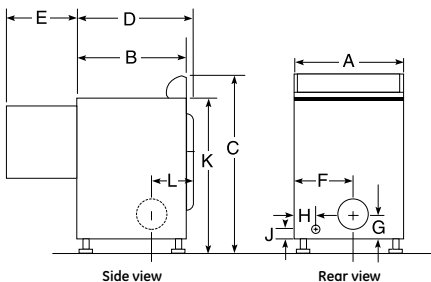
# GE Profile™ and GE® dryers

Electric Gas	GE Profile			GE					
	DPGT750EC DPGT750GC	DPSE810EG DPSE810GG	DPSR610EG DPSR610GG	DLSR483EE DLSR483GE	DRSR483EG DRSR483GG	DWSR463EG DWSR463GG	DWXR483EB DWXR483GB	DBXR463ED DBXR463GD	DJXR433EC DJXR433GC
<b>Capacity</b>									
Capacity cu. ft.	7.3 king-size	7.0 super	7.0 super	7.0 super	7.0 super	7.0 super	6.0 extra-large	6.0 extra-large	6.0 extra-large
<b>Controls</b>									
Electronic	●	Rotary			Rotary	Rotary			
Status indicators	LCD	LED							
Cycle countdown	LCD	LED							
Adaptive logic	Cycle time	Cycle time							
Heat selections	5	5	4	4	4	4	4	4	4
<b>Dry system</b>									
Clothing moisture sensor	DuoDry™	Sensor Dry Plus	Sensor Dry						
Temperature sensor	Thermistors	Thermistors	Thermostat	Thermostat	Thermostat	Thermostat	Thermostat	Thermostat	Thermostat
Dryer drum	Stainless steel	Stainless steel	Stainless steel	DuraDrum	Stainless steel	DuraDrum	DuraDrum	DuraDrum	DuraDrum
Drum baffles	Dark Platinum	White	White	White	White	White	White	White	White
Dual motors	●								
<b>Signals</b>									
End-of-cycle	Variable	●	●	Variable	Variable	Variable	Variable	Fixed	
Damp dry									
<b>Dry cycles</b>									
Number of cycles	Multiple	20	10	8	8	6	8	6	3
Custom cycles	6								
<b>Cycle selections</b>									
Cottons	●	●	●	●	●	●	●	●	●
Mixed loads	●								
Easy care	●	●	●	●	●	●	●	●	●
Knits sweaters	●	●							
Delicates	●	●	●						
Specialty cycles	Multiple								
<b>Program options</b>									
More dry	●	●	●						
Dry	●	●	●						
Less dry	●	●	●						
Damp dry	●	●	●	●	●	●	●		●
<b>Timed dry</b>									
Time control	Electronic	Electronic	80 min.	80 min.	80 min.	80 min.	80 min.	80 min.	60 min.
<b>Special cycles</b>									
Antibacterial cycle		●							
Dryel® cycle	●	●							
Delay start	●								
Add time option	●								
Dewrinkle	●	●	●	●	●		●	●	
Quick Fluff (no heat)	●	●		●	●	●	●	●	
Optional wrinkle care		●	●	●	●	●	●		
<b>Additional Features</b>									
Quiet performance	Supreme	Luxury	Deluxe	Quiet-by-Design™	Quiet-by-Design	Quiet-by-Design	Quiet-by-Design	Quiet-by-Design	Quiet-by-Design
Quiet drum	●	●							
Deluxe dryer rack	●	●	●						
Dryer interior light	●	●	●	●	●	●	●	●	
Extended venting capability	Up to 150 ft.			Up to 150 ft.					
Clean lint filter reminder	●	●							
English/Spanish LCD option	●								
<b>Appearance</b>									
Colors available*	PL, WW	WT	WT	WW	WW**, CC	WW**	WW	WW, CC	WW, CC
<b>Weights &amp; Dimensions</b>									
Approx. shipping weight-elec. (lbs.)	155	125	122	120	119	112	112	112	112
Approx. shipping weight-gas (lbs.)	155	129	127	125	125	115	115	115	115

\*PL = Dark Platinum, WW = White on white, WT = Titanium, CC = Bisque on bisque.

\*\*Silver backslash.

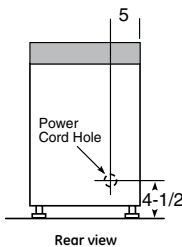
## Dryer dimensions (in inches)



	7.3 cu. ft. capacity	7.0 cu. ft. capacity	6.0 cu. ft. capacity
A	27	27	27
B	26-1/2	25-1/2*	25-1/2*
C	43	42	42
D	29	28-1/4	25-3/4
E	22-1/2	23-1/2	23-1/2
F	13	11-1/2	11-1/2
G	3-1/2	3-1/2	3-1/2
H	3	2	2
J	2-1/2	2-1/2	2-1/2
K	36	36	36
L	3-1/2	8-1/2	5-1/4

\*24-1/2" from the edge of the side panel to the front. 25-1/2" from front to edge of end caps.

## Power cord locations 6.0 and 7.0 cu. ft. dryers



Listed by  
Underwriters  
Laboratories

## Dryer specifications

### Exhaust options:

**Electric:** 4-way via rear, right, left and bottom, except for DLSR483 which is exhausted 3-way via rear, right and bottom.

**Gas:** For 5.8, 6.0, 7.0 and 7.3 cu. ft. dryers, when viewed from the front of the unit, exhaust 3-way via rear, left and bottom, except for DLSR483 which is exhausted 2-way via rear and bottom. Dryer is shipped exhausted to the rear. Alternate exhausting knockouts are supplied.

### Circuit requirements:

Electric: An individual, properly grounded branch circuit, protected by a 30-amp circuit breaker or a time-delay fuse is required.

### Electric dryer rating:

240V, 6000W, 28.5A, 60Hz—7.3 cu. ft. dryer

240V, 5600W, 24A, 60Hz—5.8, 6.0, 7.0 cu. ft. dryers

208V, 4400W, 22A, 60Hz—5.8, 6.0, 7.0 cu. ft. dryers

**Gas:** An individual, properly grounded branch circuit, with a three-prong grounding-type receptacle, protected by a 15- or 20-amp circuit breaker or a time-delay fuse is required.

### NEMA receptacle codes:

3-prong dryer cord/30A/4' long (cat #WX9X2) is for NEMA10-30R receptacle

4-prong dryer cord/30A/4' long (cat #WX9X18) is for NEMA14-30R receptacle

### Gas dryer electric rating:

120V, 60Hz, 6A

**Gas (BTU/HR):** 22,000 for 5.8, 6.0 and 7.0 cu. ft. dryers, 25,000 for 7.3 cu. ft. dryers.

Factory-equipped for natural gas. Tested for LP gas. LP gas supply requires an optional conversion kit: 5.8, 6.0 and 7.0 cu. ft. model kit is WE25X0217 and 7.3 cu. ft. model kit is WE25X10014. Have a qualified gas technician install a conversion kit. See dryer ducting information for proper installation.

**Dryer note:** Dryer wall outlet must be located within 36" of service cord entry and accessible when dryer is mounted in position.

**Note:** GE Profile Harmony™ 7.3 cu. ft. dryer elbow kit, Pub. No. 14-A003, is available at additional cost. An extra length (10-ft.) communication cable, Pub. No. 14-A013, is available at additional cost.

## Special installation requirements

### Alcove or closet installation

- If your dryer is approved for installation in an alcove or closet, it will be stated on a label on the dryer back.
- The dryer **MUST** be exhausted to the outdoors. See exhaust information below and installation instructions.
- Minimum clearances between dryer cabinet and adjacent walls or other surfaces are:
  - 0" either side
  - 3" front and rear
- Minimum vertical space from floor to overhead cabinets, ceilings, etc., is 52".
- Closet doors must be louvered or otherwise ventilated and must contain a minimum of 60 sq. in. of open area equally distributed. If this closet contains both a washer and a dryer, doors must contain a minimum of 120 sq. in. of open area equally distributed.
- No other fuel-burning appliance shall be installed in the same closet with a gas dryer.
- The closet should be vented to the outdoors to prevent gas pocketing in case of a gas leak in the supply line.

### Bathroom or bedroom installation

- The dryer **MUST** be exhausted to the outdoors. See installation instructions.
- The installation must conform with the local codes, or in the absence of local codes, with the National Fuel Gas Code, ANSI Z223.

### Minimum clearances other than alcove or closet installations

- Minimum clearances to combustible surfaces:
  - 0" both sides
  - 3" rear

### Side or bottom exhaust

- For 7.3 cu. ft. models, order kit Pub. No. 14-A003
- For 7.0, 6.0 or 5.8 cu. ft. models, see installation instructions

For more information on venting kits and accessories, please call 1-800-GE-CARES.

## Dryer exhausting information

For complete information see installation instructions packed with dryer.

**Important note:** To convert a 7.3 cu. ft. dryer from rear exhaust to bottom or side venting, Pub. No. 14-A003 is required. 5.8, 6.0 and 7.0 cu. ft. dryers do not require additional parts to convert to bottom or side venting. **Note:** An extra length (10-ft.) communication cable is available at additional cost, Pub. No. 14-A013.

### Ducting materials

For best performance, this dryer should be vented with 4" diameter all-rigid metal exhaust duct. If "all-rigid metal" duct cannot be used, then "flexible all-metal" venting can be used, but it will reduce the maximum recommended duct length.

The following kit or parts are available from your local service organization.

Kit WX8X75—7' aluminum duct and 4' hood, short tail.

(OR individual parts):

WX8X65 7' aluminum flex duct only

WX8X58 4' clamps (2)

WX8X67 4' exhaust hood

See installation instructions for complete information.

## Exhaust length calculation:

- Determine the number of 90° turns needed for your installation. If you exhaust to the side or bottom of dryer, add one turn.
- The maximum length of 4" rigid (aluminum or galvanized) duct which can be tolerated is shown in the table.  
The maximum lengths for flexible ducts are less than for rigid duct.  
See table in installation instructions. A turn of 45° or less may be ignored.  
Two 45° turns within the duct length should be treated as a 90° elbow.  
A turn over 45° should be treated as a 90° elbow.

**Exhausting the dryer to the outside is strongly recommended** to prevent large amounts of moisture and lint from being blown into the room. Gas dryers or any dryer located in a closet **must** be exhausted to the outside.

**Caution:** For personal safety do not terminate exhaust into a chimney, under any enclosed house floor (crawl space), or into an attic, since the accumulated lint could create a fire hazard or moisture could cause damage. Never terminate the exhaust into a common duct or plenum with a kitchen exhaust, since the combination of lint and grease could create a fire hazard.

Exhaust ducts should be terminated in a dampered wall cap to prevent back drafts, bird nesting, etc. The wall cap must also be located at least 12" above the ground or any other obstruction with the opening pointed down. Other terminations, such as louvered wall boxes, are acceptable provided they are equivalent to a 4" opening dampered wall cap.

## Dryer exhausting information—use metal duct only vertical and horizontal ducting

		Best performance			
		Maximum length of 4" dia. rigid metal duct		Maximum length of 4" dia. flexible metal duct	
		Exhaust hood type		Exhaust hood type	
		A 4" opening	B 2-1/2" opening	A 4" opening	B 2-1/2" opening
Domestic dryer models	Number of 90° turns				
	0	150 ft.	127 ft.	75 ft.	52 ft.
	1	140 ft.	117 ft.	65 ft.	42 ft.
	2	130 ft.	107 ft.	55 ft.	32 ft.
	3	120 ft.	97 ft.	45 ft.	22 ft.
7.3 capacity electric and gas dryers	4	110 ft.	87 ft.	35 ft.	12 ft.
	0	90 ft.	60 ft.	55 ft.	45 ft.
	1	60 ft.	45 ft.	40 ft.	30 ft.
	2	45 ft.	35 ft.	30 ft.	20 ft.
7.0, 6.0 and 5.8 capacity models all electric dryers	3	35 ft.	25 ft.	20 ft.	15 ft.
	4	25 ft.	15 ft.	15 ft.	10 ft.
7.0, 6.0 and 5.8 capacity models all gas dryers	0	90 ft.	60 ft.	55 ft.	45 ft.
	1	60 ft.	45 ft.	40 ft.	30 ft.
	2	45 ft.	35 ft.	30 ft.	20 ft.
	3	35 ft.	25 ft.	20 ft.	15 ft.
DLSR483E/G	0	150 ft.	125 ft.	55 ft.	45 ft.
	1	135 ft.	115 ft.	52 ft.	42 ft.
	2	125 ft.	105 ft.	49 ft.	39 ft.
	3	115 ft.	95 ft.	46 ft.	36 ft.
	4	105 ft.	85 ft.	43 ft.	33 ft.
Spacemaker® models	5	95 ft.	75 ft.	40 ft.	30 ft.
	0	46 ft.	37 ft.	30 ft.	24 ft.
	1	38 ft.	30 ft.	25 ft.	20 ft.
	2	31 ft.	22 ft.	20 ft.	14 ft.
WSM2780D	3	24 ft.	15 ft.	16 ft.	10 ft.
Spacemaker model WSM2700D	0	56 ft.	42 ft.	30 ft.	22 ft.
	1	46 ft.	36 ft.	22 ft.	14 ft.
	2	34 ft.	28 ft.	16 ft.	10 ft.
	3	32 ft.	18 ft.	10 ft.	5 ft.
Spacemaker models WSM2420D	0	43 ft.	36 ft.	30 ft.	24 ft.
	1	33 ft.	26 ft.	24 ft.	18 ft.
	2	23 ft.	16 ft.	16 ft.	10 ft.
	3				

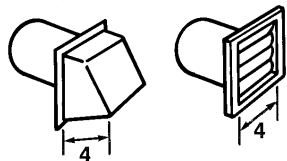
## General information for dryer exhausting

Minimizing the length of ductwork and the number of turns in an exhaust system minimizes the potential for lint to settle and accumulate in the exhaust duct and in the interior cabinet of the dryer. Refer to your specific dryer installation instructions for recommended duct length.

### 1. Wall caps and other terminations

All exhaust systems must be terminated in a manner that will prevent backdrafts from outside as well as prevent birds or other wildlife from building nests or taking refuge in the ductwork. The wall cap should present minimal resistance to the flow of exhaust air and should require little maintenance to prevent clogging. **The preferred termination is either a dampered wall cap with a 4"-wide opening or a movable louvered wall cap.**

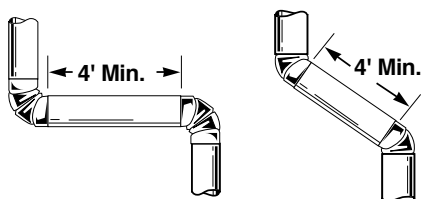
A 2-1/2" wall cap restricts airflow and increases drying time. Wall caps must be installed with the opening down, and installed at a minimum of 12" above ground level or any other obstruction. Special consideration should be given in areas where heavy snow drifts are likely to occur to ensure the wall cap does not become obstructed. Other types of terminations, such as roof vents or louvered plenum chambers, are acceptable providing **they are equivalent to the 4" dampered wall cap.** They must contain at least 14 square inches of ventilation area and afford adequate protection against backdrafts.



**Exhaust ducts must not contain screens or other filtering devices which may become clogged with lint.** The dryer exhaust must not terminate in an ordinary chimney, under an enclosed house floor or crawl space, or into an attic, since any accumulated lint could create a fire hazard and the moisture could cause damage. **Never terminate the exhaust into a common duct or plenum with a kitchen hood exhaust since the combination of grease and lint could create a fire hazard.**

### 2. Separation of turns in the ductwork

All turns in the exhaust system, external to the dryer itself, including the distance from the last turn to the dampered wall cap, should be separated by at least 4' of straight metal duct. This will reduce the added resistance which results from rapid changes in airflow direction inside the ducting. If two turns must be closer than 4', deduct 10' from the maximum lengths shown in the chart on page 27.



### 3. Treatment of turns other than 90°

One turn of 45° or less may be ignored. Two such turns should be treated as one 90°. Each turn over 45° should be treated as one 90°. Refer to specific dryer installation for maximum duct lengths and for allowable number of 90° bends. In determining the number of turns for an exhaust system, one 90° turn must be added for the bend made inside the cabinet whenever the dryer is exhausted through the right, left or bottom. NOTE: Some dryers are limited to only rear exhausting. Consult the installation instruction for the type of dryer being used.

### 4. Use of flexible metal ducting

**We recommend the use of 4" diameter rigid metal ducting for permanent and transition venting. Permanent venting is from the wall, floor or ceiling to the outside. Transition venting is from the dryer to the wall, floor or ceiling.** If rigid all-metal ducting cannot be used, then flexible all-metal ducting may be used, if the following precautions are adhered to:

- A. Use only 4" diameter all-metal ducting.
- B. It must not be allowed to collapse, kink or sag when the dryer is in its final installed position. Required turns in the exhaust system should be made with rigid elbows.
- C. Use the shortest duct length possible. Don't exceed the maximum allowable duct length specified in the installation instructions.
- D. Stretch the duct to its maximum length.
- E. To reduce the risk of fire, **never use plastic or other combustible ductwork.**

NOTE: In special installations where it is impossible to use rigid all-metal or flexible all-metal duct for transition venting, UL Listed clothes dryer transition duct may be used. The following additional precautions should be followed if this type of ducting is used.

- A. Never use transition duct beyond the wall, ceiling or floor inside the dryer.
- B. Avoid resting the duct on sharp objects. Please refer to the installation instructions for additional exhaust information.

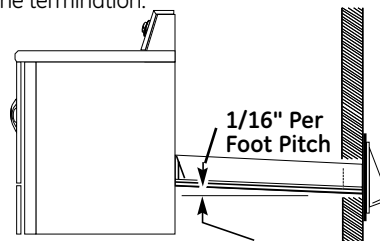
### 5. Sealing of joints

All duct joints should avoid leaks. Duct joints should be made air- and moisture-tight by wrapping the overlapped joints with duct tape. The male ends of each section of duct should point away from the dryer.

**Do not assemble the ductwork with screws or other fasteners that extend into the duct. They will serve as a collection point for lint.**

### 6. Water condensation

Condensation in a dryer exhaust system is caused by the moisture in the exhausted air contacting the cold inner surfaces of the ductwork. Condensation, which forms at the beginning of the drying cycle, will dissipate quickly after the ductwork becomes heated. If the ductwork passes through an area which keeps it cool throughout the drying cycle, considerable condensation within the duct can be expected. This can result in rapid accumulation of lint in the ductwork. Ductwork which runs through an unheated area or is situated adjacent to an air conditioning duct should be insulated to avoid such condensation problems. Joints should be tight to avoid leaks and, where feasible, the duct should be dropped 1/16" per foot toward the termination.



### 7. Accessibility for cleaning

Since it may be necessary from time to time to remove lint from the inside of the ductwork, it is important that the exhaust system be installed with a provision for periodic inspection and cleaning. Some provision should be made for access to turns and straight runs of duct installed in an enclosed area, such as above plastered ceilings. Special consideration should be given to the amount of maintenance required for roof caps on vertical installations, since the user cannot be expected to make frequent inspections or cleanings.

#### Single family-type dwellings

For more detailed information, refer to the installation instructions for the specific dryer model selected.

#### Mobile or manufactured home installation

Gas Dryer installation must conform with local Gas Codes and with CGA B149.1 or B149.2 (Installation code for Gas Burning Appliances and Equipment).

All Dryer Installations must conform to Manufactured Home Construction and Safety Standard, Title 24 CFR, Part 32-80. The dryer **must** be exhausted to the outdoors with the termination securely fastened to the mobile home structure. The exhaust **MUST NOT** be directed underneath the mobile home.



## Multi-unit dryer installation

### Multi-unit systems

Accurate installation of a good dryer exhaust system in multi-family construction is especially important. The restrictions applied by this type of construction should cause the planner to be more concerned than in single-family construction.

When the length of the exhaust duct or the number of turns in the system exceeds the maximum limitations recommended by the dryer manufacturer, the planner must seek an alternate solution. One option is to install a common ducting system that is capable of handling the discharge of several dryers at various points along the system.

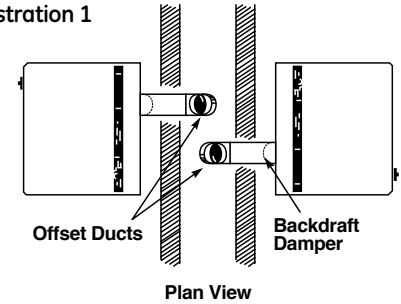
The scope of the subject is far too broad to be extensively described within this publication. Sufficient information is presented, however, to make the planner aware of the importance of special attention to the subject. Two types of common ducts are generally used: (1) the common dryer exhaust stack with an auxiliary roof fan and (2) the chimney exhaust.

### Stack and chimney designs and exhaust fans must meet all local code requirements.

It is suggested that professional engineering counsel should be sought in these matters. Dryers should be installed as close to the common duct as possible. Dryer discharges must be offset to prevent one unit from exhausting

directly into another. See Illustration No. 1.

Illustration 1



### Common fan-assisted dryer exhaust stack (auxiliary roof fan systems)

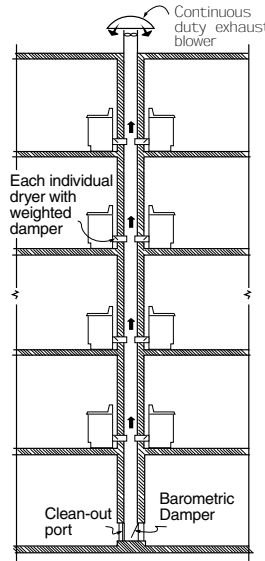
The stack outlet (See Illustration No. 2) must be fitted to a continuous duty exhaust fan rated to handle the stack air volume for the total number of dryers on the system. Periodic cleaning of the exhaust fan is necessary to maintain efficient operation.

The bottom of the stack should contain a barometric damper to prevent drawing air through the dryers not in use, and a lint clean-out access door. The damper should be adjusted to just open with all dryers on and the continuous-duty exhaust fan operating.

The weighted damper in the individual dryer ducts should be adjusted so that it will just close with all dryers off and the continuous-duty exhaust fan operating. The fan should be running at all times. The duct system from each individual dryer must meet the turn and length requirements as noted on page 27.

The required stack diameter for air volumes of 200 CFM to 3,000 CFM can be determined from Illustration No. 4 and calculations on the chart to the right.

Illustration 2



### How to use Illustration No. 4

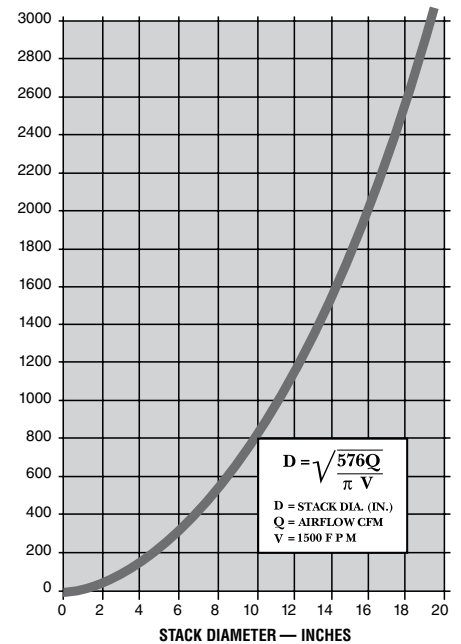
Airflow value: 150 CFM.

Assume installation contains eight (8) dryers operating at the same time. Stack air volume (Q) = 150 x 8 = 1200 CFM (Q) is air volume that stack must be capable of handling in the event all dryers are running at one time. Therefore, the stack diameter must be:

$$D = \sqrt{\frac{576Q}{\pi V}} = \sqrt{\frac{576 \times 1200}{\pi \times 1500}} = \sqrt{147} \approx 12 \text{ inches}$$

or read directly from Illustration No. 4 by placing 1200

Illustration 4



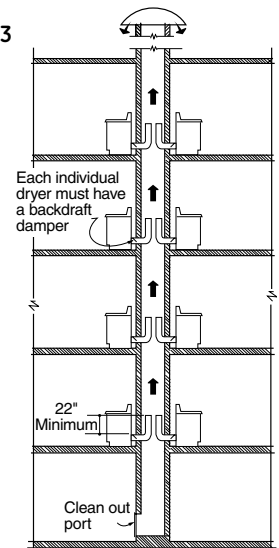
on the vertical scale and reading 12 on the horizontal scale. The stack diameter should be 12 inches to handle the required volume of air and the continuous-duty exhaust blower should be rated to handle this volume while maintaining an air velocity of 1500 Ft./Minute.

### Chimney exhaust system

The chimney must be fire-resistant and large enough to accommodate the volume of air exhausting from the dryers. Consideration must be made for lint buildup, excessive chimney pressures, backdrafts and other technical factors which will influence the performance and the safety of the system. A lint clean-out access door should be included at the bottom of the chimney. Each dryer duct must have a 4" diameter backdraft damper, adjusted so that it will just close with the dryer inoperative. This will prevent the exhaust and lint of one dryer from going into another dryer and its room. The duct system for each individual dryer must meet the turn and length requirements as noted on page 27.

**Use the specs for a 2-1/2" exhaust hood for proper dryer performance.** Include the 90° elbow and all ducting in the chimney in your calculations. The 22" (minimum) of vertical ducting in the chimney reduces back pressure and is required for proper dryer performance. See Illustration No. 3.

Illustration 3

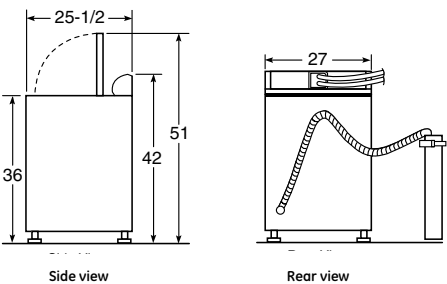


Commercial Smart Card washer and dryer

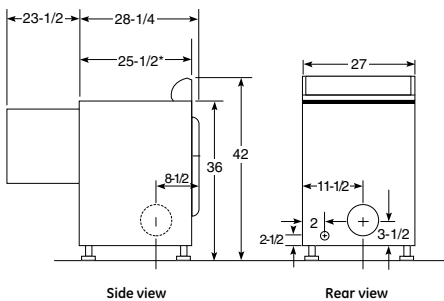
	GE washer
	WNCK2050G
Capacity	
Capacity (cu. ft.)	Super (3.2)
Features	
Motor speed	2
Wash/spin speed comb.	3
Wash/rinse temperatures	3
Water levels	Adjustable
Digital cycle countdown	●
Number of wash cycles	5
White cottons	●
Colored cottons	●
Bright colors	●
Permanent Press	●
Delicate	●
Quiet performance	●
Lid instructions	●
LED indicators	●
Smart Card features	
Reader	ESD
Alphanumeric display	●
Control card	●
Appearance	
Colors available	White Brushed aluminum/black/ burgundy
Control panel	
Weights & Dimensions	
Approx. shipping wt. (lbs.)	170

	GE dryer
	DNCK440EA/GA
Capacity	
Capacity (cu. ft.)	Super (7.0)
Features	
Heat selections	4
Dry cycles	4
High Heat	●
Medium Heat	●
Low Heat	●
Cool down	w/high heat
Digital cycle countdown	●
Quiet performance	●
Lockable lint filter	●
LED indicators	●
Door swing	Reversible
Drum finish	White DuraDrum
Smart Card features	
Reader	ESD
Alphanumeric display	●
Control card	●
Appearance	
Colors available	White Brushed aluminum/black/ burgundy
Control panel	
Weights & Dimensions	
Approx. ship. wt. (lbs.)	Elect. 130 Gas 125

Washer dimensions (in inches)



Dryer dimensions (in inches)



Stacked commercial dryers

	GE dryers
	Electric DDC4400S Gas DDC4500S
Capacity	
Capacity (cu. ft.)	Large (5.4)
Features	
Automatic Dry Control	●
Upfront lint filter	●
Heat selections	3
Number of cycles	3
Cottons	●
Permanent Press	●
Delicates/Synthetic/Knits	●
100% front serviceable	●
Reverse-A-Door	●
Heavy-duty 1/4 HP motor	●
Appearance	
Colors available	White
Weight & Dimensions	
Approx. shipping wt. (lbs.)	Electric 275 Gas 274
Stacked (HxWxD in inches)	77 x 27 x 27

**Exhaust options:**  
**Electric:** 3-way venting: left, right, or rear. Maximum recommended exhaust duct length is 25 feet of 4" rigid ducting with two 90° elbows and 4" dampered wall cap.  
**Gas:** 2-way venting: left or rear. Maximum recommended exhaust duct length is 15 feet of 4" rigid ducting with two 90° elbows and a dampered wall cap.  
Dryer is shipped with exhaust to the rear. (See Installation Instructions.)

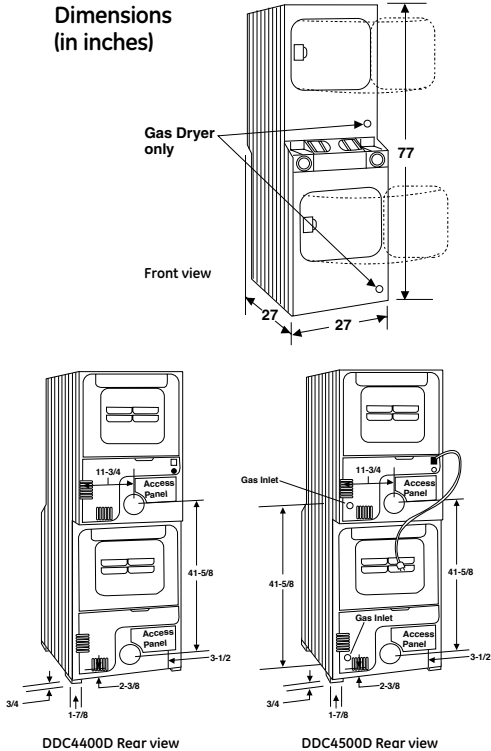
**Circuit requirements:**  
**Electric:** An individual branch circuit fused for 30 amps is required for each dryer.  
**Electric dryer rating:** 240V, 60Hz, 5600W, 24A  
208V, 60Hz, 4400W, 22A  
A special 208-volt heater, part number WE11X0101, is available to reduce drying time in 208-volt installations.  
**Gas:** An individual branch circuit, properly grounded for a 3-prong outlet, fused for 15 or 20 amp, is required for each dryer.

**Gas dryer rating:** 115V, 60Hz  
**Gas (BTU/Hr):** Maintains thermostatically controlled heat flow to dry clothes gently. Longer cool-down period on Permanent Press cycle helps prevent heat-set wrinkles. Separate thermostat controls lower temperatures for Knit cycle drying. Factory equipped for natural gas. Tested for LP gas. A conversion kit, WE25X0217, is required for LP gas. Check installation instructions for correct kit number. Have a qualified technician install the conversion kit.

**See Pub. No. 31-1723 for DDC4400D and Pub. No. 31-1724 for DDC4500D installation instructions.**

**Note:** Dimensions and specifications shown here are correct at the time this sheet was printed. Before proceeding with construction or rough-in, check installation instructions that came with your unit. Specifications, dimensions and design are subject to change without notice.  
**Note:** Wall anchor chain provided for gas models only.

Dimensions (in inches)



## Commercial washers and dryers

	GE washers		
	WCRD2050F	WCCD2050F WMCD2050G	WCCB1030F
<b>Capacity</b>			
Capacity (cu. ft.)	3.5	3.2	3.2
<b>Features</b>			
Wash time (excludes fill)	24 min.	24 min.	24 min.
Water usage	29,32/35 gal.	29,32/35 gal.	29,32/35 gal.
<b>Controls</b>	Coin-op	Coin-op	Coin-op
Coin box/card reader	Box shipped attached	Box shipped attached	Box shipped attached
Coin slide/drop box/card reader	Customer-supplied	Customer-supplied	Customer-supplied
Installed coin kit		—/●	
Display	LED	LED	
Control type	Pushbutton w/ LED countdown	Pushbutton w/ LED countdown	Pushbutton
Cycle indicator lights	●	●	●
<b>Washing features</b>			
Wash/rinse temperatures	3	3	3
Wash/spin speed combinations	2	2	1
Motor speeds	2	2	1
Water levels	3 - adjustable	3 - adjustable	3 - adjustable
Agitator type	GentlePower™	GentlePower	GentlePower
Wash basket type	Stainless steel	ExtrAction™	ExtrAction
Number of wash cycles	5	5	3
<b>Cycles</b>			
Whites/cotton regular	●	●	●
Colors/cotton	●	●	●
Bright colors	●	●	●
Permanent press	●	●	●
Delicates cycle	●	●	●
<b>Unit features</b>			
Color lid instructions	●	●	●
Lid opening	Rear	Rear	Rear
100% front serviceable	●	●	●
Armor guard protection	●	●	●
Steel drive transmission	●	●	●
Galvanized/E-coated steel	●	●	●
Auto balance suspension system	●	●	●
Spin speeds	630 RPM	630 RPM	630 RPM
Front leveling legs/rear self leveling system	●	●	●
Drain pump	TURBO 8-ft	TURBO 8-ft	TURBO 8-ft
<b>Appearance</b>			
Colors available	White	White	White
<b>Weights &amp; Dimensions</b>			
Approx. shipping weight (lbs.)	190	174	174
Dimensions (HxWxD in inches)	42 x 27 x 25-1/2		

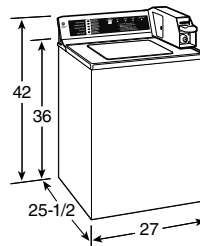
## Non-coin-op commercial washer and dryer

	GE washer		GE dryer
	WNRD2050D		DNCD450EA/GA
<b>Capacity</b>			
Capacity (cu. ft.)	3.5 stainless steel		Super (7.0)
<b>Features</b>			
Motor	2-speed		
Wash/spin speed combinations	3		
Wash/rinse temperatures	3		
Water levels	4		
Digital cycle countdown	●		
Number of wash cycles	5		
White cottons	●		
Colored cottons	●		
Bright colors	●		
Permanent Press	●		
Delicate	●		
Spin only	●		
Bleach dispenser	●		
Fabric softener dispenser	●		
Quiet performance	Deluxe quiet		
Lid instructions	●		
LED indicators	●		
<b>Appearance</b>			
Colors available	White		
Braille kit	WX05X10007		
<b>Weights &amp; Dimensions</b>			
Approx. shipping wt. (lbs.)	160		

<b>Capacity</b>	
Capacity (cu. ft.)	Super (7.0)
<b>Features</b>	
Dry cycles	5
Cottons/high heat	●
Mixed loads/high heat	●
Perm. press/medium heat	●
Knits/low heat	●
Delicates/extra low heat	●
Temperatures	4
Air dry	●
Digital cycle countdown	●
Quiet performance	Hush quiet
Lockable lint filter	●
LED indicators	●
Door swing	Reversible
Drum material	White DuraDrum
<b>Appearance</b>	
Colors available	White
Braille kit	WX05X10007
<b>Weights &amp; Dimensions</b>	
Approx. shipping wt. (lbs.)	125

	GE dryers		
	Electric	DCCD330ED	DCCB330EG
<b>Capacity</b>			
Capacity (cu. ft.)		Super (7.0)	Super (7.0)
<b>Features</b>			
<b>Control</b>		Coin-op	Coin-op
Coin box/card reader		Box shipped attached	Box shipped attached
Coin slide/drop box/card reader		Customer-supplied	Customer-supplied
Installed coin kit			—/●
Display		LED	
Control type		Pushbutton w/LED count down	Pushbutton
Cycle indicator lights		●	●
<b>Heating features</b>			
Heats		3	3
Lint filter		Upfront	Upfront
Dryer baffles/paddles		Plastic	Plastic
Dryer drum type		Painted	Painted
Number of dry cycles		3	3
<b>Cycles</b>			
Whites/cottons/mixed loads		●	●
Knits/synthetics/delicates cycle		●	●
Permanent press		●	●
<b>Unit features</b>			
Quiet package		Quiet-By-Design	Quiet-By-Design™
Door opening		Reversible	Reversible
100% front serviceable		●	●
Armor guard protection		●	●
Galvanized steel cabinet		●	●
Leveling system		4-leg adjustable	4-leg adjustable
Electric-vent positions		4 way-rear, bottom, left, right	4 way-rear, bottom, left, right
Gas-vent positions		3 way-rear, bottom & left viewed from front	3 way-rear, bottom & left viewed from front
<b>Gas requirements</b>			
Gas rate		22000 BTU/Hr	22000 BTU/Hr
Type		Natural gas	Natural gas
Options		LP kit available	LP kit available
Ignition		Glo-Bar	Glo-Bar
<b>Appearance</b>			
Colors available		White	White
<b>Weights &amp; Dimensions</b>			
Approx. shipping wt. electric (lbs.)		125	125
Approx. shipping wt. gas (lbs.)		135	135
Dimensions (HxWxD in inches)		42 x 27 x 25-1/2	

### Washer dimensions (in inches)



### Energy saving:

All wash cycles include energy-saving cold water rinse. Total cycle time—24 minutes plus fill time. Actual wash time is 8 minutes with a final spin speed of approximately 630 RPM.

### Circuit requirement:

An individual, properly grounded 15- or 20-amp branch circuit is required.

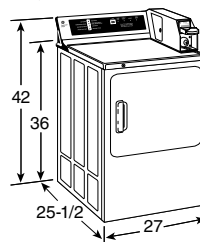
### Electrical rating:

115V, 60Hz

See Pub. No. 31-15400 for installation instructions.

Note: Coin slide or coin drop, coin vault, and locks for cover and meter case access door are not provided with washer (except for WMCD2050G, with coin slide).

### Dryer dimensions (in inches)



### Exhaust options:

**Electric:** 4-way venting: left, right, bottom and rear. Maximum recommended exhaust duct length is 45 feet of 4" rigid ducting with two 90° elbows and 4" dampered wall cap.

**Gas:** 3-way venting: left, bottom and rear. Maximum recommended exhaust duct length is 15 feet of 4" rigid ducting with two 90° elbows and a dampered wall cap. Dryer is shipped with exhaust to the rear.

(See Installation Instructions.)

See Pub. No. 31-1746 for installation instructions.

Note: Coin slide or coin drop, coin vault and locks for cover and meter case access door are not provided with dryer except for DMCD330EG/GG with coin slide.

### Circuit requirements:

Electric An individual branch circuit fused for 30 amps is required for each dryer.

### Electric dryer rating:

240V, 60Hz, 5600W, 24A  
208V, 60Hz, 4400W, 22A

**Gas:** An individual branch circuit fused for 15 or 20 amps is required for each dryer.

### Gas dryer rating:

120V, 60Hz  
**Gas (BTU/Hr):** 20,000. Factory equipped for natural gas. Tested for LP gas. A conversion kit is required for LP gas. Check installation instructions for correct kit number. Have a qualified technician install

the conversion kit. Equipped with energy saving Glo-Bar ignition.

**Dryer note:** Dryer wall outlet must be located within 36" of service cord entry and accessible when dryer is mounted in position.

**Note:** Dimensions and specifications shown here are correct at the time this sheet was printed. Before proceeding with construction or rough-in, check installation instructions that came with your unit. Specifications, dimensions and design are subject to change without notice.

# GE Profile™ and GE® washers and dryers

Wash big. Dry fast. Get on with life.

## Washer



### Performance

**New HydroWave™ wash system** has variable speeds to match the wash action to the clothing type. Longer, slower travel through the water provides great cleaning performance and is gentler on your clothes.



### Quiet

**The new HydroWave wash system** was designed to be quieter. Lets you do the wash any time, whether it's night time or nap time.



### Capacity

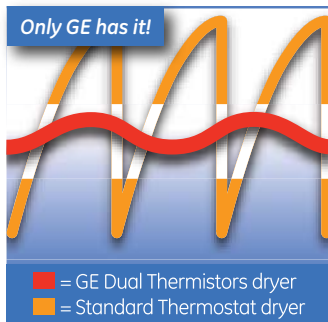
**King-size 3.5 cu. ft. ribbed stainless steel wash basket** washes more at once, which means fewer loads and less time spent doing laundry.

## Dryer



### Performance

**Delicate cycle with extra-low heat setting** helps protect fine garments from shrinkage and wear by maintaining an average fabric temperature of 125°F, the lowest delicate cycle temperature available.



### Clothes Care

**Dual electronic thermistors** maintain constant, even heat for shorter dry times and better fabric care.



### Capacity

**7.0 cu. ft. super capacity stainless steel dryer drum** handles large items and family-size loads, without snagging or tearing fabrics.

*Not all features available on all models.*



## A Century of Quality and Innovation

For more than a century, GE has been committed to producing innovative products that change the way people live. The result of thorough research and rigorous testing, GE appliances are designed for years of dependable performance. Today, the GE tradition of quality and innovation continues.

**GE Consumer & Industrial**  
Appliances  
General Electric Company  
Louisville, KY 40225  
ge.com

GE has a policy of continuous improvement of its products and reserves the right to change materials and specifications without notice.

© 2006 GE Company  
Pub. No. 24-C856 PC46243