



# GE<sup>®</sup> room air conditioners

#1 preferred brand of room air conditioners.



Comforting solutions.





GE units **offer** you and your customers plenty of **choices**. The unique GE line provides the features your customers look for and you **demand**.

Choose from window or through-the-wall installation models. Pick from heat pump, electric resistance heat or **choose** the cooling only models. Plus, most units come with the **reliability** of microprocessor or solid-state controls.

All units offer contemporary **styling** and are easy to install and maintain. So, regardless of type or scope of your project, GE delivers **dependable**, quality units that meet your specifications—and exceed your customers' **expectations**.

Feature gallery — GE® electronic room air conditioners

#1 preferred brand of room air conditioners.



GE model AGQ18DJ



Energy Saver feature

Once the room is cool enough, the thermostat will shut down the compressor and fan, saving energy and money.



Timer

Electronic models feature a timer control so you can program the air conditioner to turn "on" or "off" when you're not around.



Auto Circulaire™

Creates a cooler, more even temperature throughout the room. Oscillating louvers automatically distribute the air evenly.



Remote control

Cooling comfort is at your fingertips with remote control convenience.



Power interruption restart

Remembers and restarts the unit at the setting prior to the loss of power.



Quiet

Enjoy total room comfort with quiet operation.



ENERGY STAR®-qualified

Certified to meet ENERGY STAR guidelines for energy efficiency.



Easy mount

Designed for ease of installation and requires no prior experience or special tools.



## Feature gallery — GE® built-in room air conditioners

#1 preferred brand of room air conditioners.



GE model AJCQ12DCB



### Timer

Electronic models feature a timer control so you can program the air conditioner to turn "on" or "off" when you're not around.



### Appearance

Clean lines, smooth curves and contemporary design help the air conditioner blend into a room.



### Upfront filters

Upfront easy to clean filters make maintenance a breeze.



### High-mount

Controls and filter located at bottom of unit for easy access when mounted high in wall offering installation flexibility.



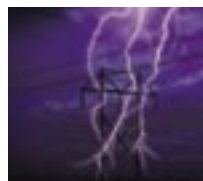
### ENERGY STAR®-qualified

Certified to meet ENERGY STAR guidelines for energy efficiency.



### Remote control

Cooling comfort is at your fingertips with remote control convenience.



### Power interruption restart

Remembers and restarts the unit at the setting prior to the loss of power.

# Electronic room air conditioners

## #1 preferred brand of room air conditioners.



### GE® electronic

- ENERGY STAR®-qualified
- 3 cool/3 fan speeds
- Electronic thermostat with remote
- Slide-out chassis
- 24-hour timer
- Energy Saver feature
- EZ Mount window kit
- Power interruption restart



#### AGM24DJ

- 23,600/23,150 BTU, 9.4/9.4 EER, 230/208 Volts



### GE electronic

- ENERGY STAR®-qualified
- 3 cool/3 fan speeds
- Electronic thermostat with remote
- Slide-out chassis
- 24-hour timer
- Auto Circulaire™
- Energy Saver feature
- EZ Mount window kit
- Power interruption restart



#### AGM18DJ

- 17,800/17,300 BTU, 10.7/10.7 EER, 230/208 Volts

#### AGM12AJ

- 12,000 BTU, 10.8 EER, 115 Volts



#### AGM14AJ

- 13,800 BTU, 10.8 EER, 115 Volts

#### AGM10AJ

- 10,000 BTU, 10.8 EER, 115 Volts



### GE electronic

- ENERGY STAR®-qualified
- 3 cool/3 fan speeds
- Electronic thermostat with remote
- Slide-out chassis
- 24-hour timer
- Auto Circulaire
- Energy Saver feature
- EZ Mount window kit
- Power interruption restart



#### AGM08LJ

- 8,000 BTU, 10.8 EER, 115 Volts

#### AGM06LJ

- 5,950 BTU, 10.7 EER, 115 Volts



### GE electronic

- ENERGY STAR®-qualified
- 3 cool/3 fan speeds
- Electronic thermostat with remote
- Fixed chassis
- 24-hour timer
- Energy Saver feature
- EZ Mount window kit
- Power interruption restart



#### AGM05LJ

- 5,200 BTU, 10.7 EER, 115 Volts



### GE electronic

- 3 cool/3 fan speeds
- Electronic thermostat with remote
- Slide-out chassis
- 12-hour timer
- Auto Circulaire
- Energy saver feature
- EZ Mount window kit
- Power interruption restart

### AGQ18DJ

- 18,000/17,500 BTU, 9.7/9.7 EER, 230/208 Volts

### AGQ14AJ

- 13,800 BTU, 10.0 EER, 115 Volts



### AGQ24DJ

- 23,500/23,100 BTU, 8.6/8.6 EER, 230/208 Volts



### AGQ12AJ

- 12,000 BTU, 9.8 EER, 115 Volts  
(This model does not include Auto Circulaire or Energy saver feature)



### AGQ08AJ

- 8,000 BTU, 9.8 EER, 115 Volts  
(This model does not include Auto Circulaire or Energy saver feature)



### AGQ12DJ

- 12,000/11,500 BTU, 9.8/9.8 EER, 230/208 Volts (This model does not include Auto Circulaire or Energy saver feature)



### AGQ10AJ

- 10,000 BTU, 9.8 EER, 115 Volts  
(This model does not include Auto Circulaire or Energy saver feature)



### GE electronic

- 3 cool/3 fan speeds
- Electronic thermostat with remote
- Fixed chassis
- 12-hour timer
- EZ Mount window kit
- Power interruption restart

### AGQ06LJ

- 6,000 BTU, 9.7 EER, 115 Volts



### GE electronic

- 3 cool/3 fan speeds
- Electronic thermostat with remote
- Fixed chassis
- 12-hour timer
- EZ Mount window kit
- Power interruption restart

### AGQ05LJ

- 5,150 BTU, 9.7 EER, 115 Volts

# Mechanical room air conditioners

#1 preferred brand of room air conditioners.



## GE® mechanical

- 3 cool/2 fan speeds
- 8-position thermostat
- Slide-out chassis
- Auto Circulaire™
- Energy Saver feature
- EZ Mount window kit

### AGV14AJ

- 13,800 BTU, 10.0 EER, 115 Volts



### AGV18DJ

- 18,000/17,500 BTU, 9.7/9.7 EER, 230/208 Volts



### AEV24DJ

- 23,500/23,100 BTU, 8.6/8.6 EER, 230/208 Volts



## GE mechanical

- 3 cool/2 fan speeds
- 8-position thermostat
- Slide-out chassis
- EZ Mount window kit

### AGV12AJ

- 12,000 BTU, 9.8 EER, 115 Volts



### AGV10AJ

- 10,000 BTU, 9.8 EER, 115 Volts



### AGV08AJ

- 8,000 BTU, 9.8 EER, 115 Volts





#### GE mechanical

- 3 cool/2 fan speeds
- 8-position thermostat
- Fixed chassis
- EZ Mount window kit

#### AGV06LJ

- 6,000 BTU, 9.7 EER, 115 Volts



#### GE mechanical

- 2 cool/2 fan speeds
- Adjustable thermostat
- Fixed chassis
- EZ Mount window kit

#### AGV05LJ

- 5,150 BTU, 9.7 EER, 115 Volts

## Slide-Aire room air conditioners



### GE® Slide-Aire room air conditioners

- 10-position thermostat
- Vertical slider kit panel
- Multiple cooling and fan speeds
- Four-way adjustable air discharge

#### AGX10AJ

- 10,000 BTU, 9.5 EER, 115 Volts

#### AGX08FJ

- 8,000 BTU, 9.5 EER, 115 Volts

## Heat/cool series



### GE heat/cool series

- Multiple cooling/heating speeds
- Vent/Exhaust
- Adjustable thermostat
- Auto Circulaire™
- Four-way adjustable air discharge
- Easy access filter

#### AGE21DJ

- 21,000/20,500 BTU, 8.5/8.5 EER, 11,600/9,400 BTU Heat, 230/208 Volts

#### AGE18DJ

- 18,000/17,500 BTU, 9.7/9.7 EER, 11,600/9,400 BTU Heat, 230/208 Volts

#### AGE12DJ

- 12,000/11,500 BTU, 9.8/9.8 EER, 11,200/9,200 BTU Heat, 230/208 Volts (This model does not include Auto Circulaire)

#### AGE07AJ

- 6,900 BTU, 9.7 EER, 3,850 BTU Heat, 115 Volts (This model does not include Auto Circulaire)

## Dehumidifiers



### GE dehumidifiers

- ENERGY STAR®-qualified
- Automatic humidistat control
- Electronic controls
- Automatic shut-off system with bucket full indicator
- Easy roll casters
- External drain connector
- Automatic defrost control

#### AHG50LJ

- 50 pints per day

#### AHG40LJ

- 40 pints per day

#### AHG30LJ

- 30 pints per day  
(Not an ENERGY STAR model)



control panel for AHG50LJ

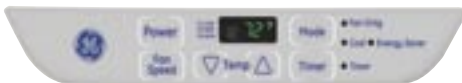


control panel for AHG40LJ



control panel FOR AHG30LJ

## Low profile air conditioners



control panel

### GE low profile air conditioner

- Contemporary design
- Electronic controls
- Digital temperature readout
- 3 cool/3 fan speeds
- 12-hour timer

#### AGP07LJ

- 6,500 BTU, 9.8 EER, 115 Volts

## Built-in room air conditioners

#1 preferred brand of room air conditioners.



### GE® standard-mount electronic cool only

- ENERGY STAR®-qualified
- Electronic control with remote
- Electronic digital thermostat
- Four-way air direction
- Up-front, washable air filter
- 3 cool/3 fan speeds
- Power interruption restart



#### AJCQ06LCB

- 6,000 BTU, 10.0 EER, 115 Volts

#### AJCQ08ACB

- 8,000 BTU, 9.5 EER, 115 Volts

#### AJCQ10ACB

- 9,900 BTU, 9.5 EER, 115 Volts

#### AJCQ10DCB

- 9,900/9,700 BTU, 9.5/9.5 EER, 230/208 Volts

#### AJCQ12DCB

- 11,600/11,400 BTU, 9.5/9.5 EER, 230/208 Volts



### GE standard-mount cool only

- ENERGY STAR-qualified
- Mechanical controls
- Variable position thermostat
- Four-way air direction
- Up-front, washable air filter
- 2 cool/2 fan speeds



#### AJCS06LCB

- 6,000 BTU, 10.0 EER, 115 Volts

#### AJCS08ACB

- 8,000 BTU, 9.5 EER, 115 Volts

#### AJCS10ACB

- 9,900 BTU, 9.5 EER, 115 Volts

#### AJCS09DCB

- 8,900/8,700 BTU, 9.5/9.5 EER, 230/208 Volts

#### AJCS10DCB

- 9,900/9,700 BTU, 9.5/9.5 EER, 230/208 Volts

#### AJCS12DCB

- 11,600/11,400 BTU, 9.5/9.5 EER, 230/208 Volts



### GE high-mount cool only

- ENERGY STAR-qualified
- Mechanical controls
- Variable position thermostat
- Four-way air direction
- Up-front, washable air filter
- 2 cool/2 fan speeds



#### AJCH08ACB

- 8,000 BTU, 9.5 EER, 115 Volts

#### AJCH10ACB

- 9,900 BTU, 9.5 EER, 115 Volts

#### AJCH10DCB

- 9,900/9,700 BTU, 9.5/9.5 EER, 230/208 Volts

#### AJCH12DCB

- 11,600/11,400 BTU, 9.5/9.5 EER, 230/208 Volts





### GE standard-mount heat/cool

- Mechanical controls
- Variable position thermostat
- Four-way air direction
- Up-front, washable air filter
- 2 cool/2 heat/2 fan only speeds

#### AJES06LSB

- 6,000 BTU cool, 4,100 BTU heat, 10.0 EER rating, 115 Volts

#### AJES08ASB

- 8,000 BTU cool, 4,100 BTU heat, 9.5 EER, 115 Volts

#### AJES10DSB

- 9,900/9,700 BTU cool, 11,600/9,500 BTU heat, 9.5/9.5 EER, 230/208 Volts

#### AJES09DCB

- 8,900/8,700 BTU cool, 11,600/9,500 BTU heat, 9.5/9.5 EER, 230/208 Volts

#### AJES10DCB

- 9,900/9,700 BTU cool, 11,600/9,500 BTU heat, 9.5/9.5 EER, 230/208 Volts

#### AJES12DCB

- 11,600/11,400 BTU cool, 11,600/9,500 BTU heat, 9.5/9.5 EER, 230/208 Volts



### GE high-mount heat/cool

- Mechanical controls
- Variable position thermostat
- Four-way air direction
- Up-front, washable air filter
- 2 cool/2 heat/2 fan only speeds

#### AJEH12DCB

- 11,600/11,400 BTU cool, 11,600/9,500 BTU heat, 9.5/9.5 EER, 230/208 Volts



### GE heat pump

- ENERGY-STAR-qualified
- Mechanical controls
- Variable position thermostat
- Four-way air direction
- Up-front, washable air filter
- 2 cool/2 heat/2 fan only speeds



#### AJHS08ASB

- 8,000 BTU cool, 7,700 BTU pump, 4,100 BTU heat, 9.5 EER, 115 Volts

#### AJHS08DCB

- 8,000/7,800 BTU cool, 7,700/7,500 BTU pump, 11,600/9,500 BTU heat, 9.5/9.5 EER, 230/208 Volts

#### AJHS10DCB

- 9,900/9,700 BTU cool, 9,700/9,500 BTU pump, 11,600/9,500 BTU heat, 9.5/9.5 EER, 230/208 Volts

# Electronic room air conditioners

(preliminary specifications)

	Deluxe 230 Volt		Deluxe 115 Volt					
	AGM24DJ	AGM18DJ	AGM14AJ	AGM12AJ	AGM10AJ	AGM08LJ	AGM06LJ	AGM05LJ
<b>Features</b>								
ENERGY STAR®-qualified		●	●	●	●	●	●	●
BTUH	23,600/23,150	17,800/17,300	13,800	12,000	10,000	8,000	5,950	5,200
Voltage	230/208	230/208	115	115	115	115	115	115
E.E.R. (BTUH/Watt)	9.4/9.4	10.7/10.7	10.8	10.8	10.8	10.8	10.7	10.7
Amps	12.2/13.2	7.4/7.9	12.0	10.2	8.5	6.8	5.0	4.4
Watts	2500/2450	1,660/1,620	1,280	1,110	920	740	550	480
Plug Type	Perpendicular	Tandem/Right Angle	Parallel/Right Angle	Parallel/Right Angle	Parallel/Right Angle	Parallel/Right Angle	Parallel/Right Angle	Parallel/Right Angle
Energy Saver Feature	●	●	●	●	●	●	●	●
Dehumidification (pints/hr)	6.8	4.6	4.6	3.3	3.3	2.3	1.8	1.4
Auto Circulaire™		●	●	●	●	●	●	
Fan Speeds (Cool/Fan Only)	3/3	3/3	3/3	3/3	3/3	3/3	3/3	3/3
CFM (High Shown) (Indoor)	600	445	350	300	270	240	210	140
Vent/exhaust	Exhaust	Exhaust	Exhaust	Exhaust	Exhaust	Exhaust	Exhaust	
Thermostat	Electronic	Electronic	Electronic	Electronic	Electronic	Electronic	Electronic	Electronic
Filter Type	Rigid Frame/ Slide-Out	Rigid Frame/ Slide-Out	Rigid Frame/ Slide-Out	Rigid Frame/ Slide-Out	Rigid Frame/ Slide-Out	Rigid Frame/ Slide-Out	Rigid Frame/ Slide-Out	Rigid Frame/ Slide-Out
Chassis	Slide-Out	Slide-Out	Slide-Out	Slide-Out	Slide-Out	Slide-Out	Slide-Out	Fixed
Window Mounting	EZ Mount	EZ Mount	EZ Mount	EZ Mount	EZ Mount	EZ Mount	EZ Mount	EZ Mount
Window Opening Height (min. in inches)	19	18	18	16	16	14	14	13
Window Opening Width (in inches) min.	27	27	27	24	24	19	19	19
max.	41	41	41	39	39	36	36	36
Warranty*	Limited 1-Yr.	Limited 1-Yr.	Limited 1-Yr.	Limited 1-Yr.	Limited 1-Yr.	Limited 1-Yr.	Limited 1-Yr.	Limited 1-Yr.
Warranty* (Sealed Ref. System)	Limited 5-Yr.	Limited 5-Yr.	Limited 5-Yr.	Limited 5-Yr.	Limited 5-Yr.	Limited 5-Yr.	Limited 5-Yr.	Limited 5-Yr.
<b>Case Dimensions</b>								
Height (in inches) A	17-2/3	16-27/32	16-27/32	15	15	13-7/8	13-7/8	12-9/32
Width (in inches) B	25-31/32	26	26	23-5/8	23-5/8	18-9/16	18-9/16	18-9/16
Depth (in inches) C	26-3/20	24-15/16	24-15/16	20-9/32	20-9/32	19-5/32	19-5/32	13-27/32
Depth to louvers (in inches) D	11	10-5/16	10-5/16	8-5/8	8-5/8	8-1/4	8-1/4	6-1/4
Net Weight (lbs.)	128	124	124	80	79	62	57	46
Approx. Shipping Weight (lbs.)	146	134	134	89	87	68	63	50

\*See written warranty for details.

	230 Volt			115 Volt					
	AEQ24DJ	AGQ18DJ	AGQ12DJ	AGQ14AJ	AGQ12AJ	AGQ10AJ	AGQ08AJ	AGQ06LJ	AGQ05LJ
<b>Features</b>									
BTUH	23,500/23,100	18,000/17,500	12,000/11,500	13,800	12,000	10,000	8,000	6,000	5,150
Voltage	230/208	230/208	230/208	115	115	115	115	115	115
E.E.R. (BTUH/Watt)	8.6/8.6	9.7/9.7	9.8/9.8	10.0	9.8	9.8	9.8	9.7	9.7
Amps	13.1/12.1	8.2/8.9	5.5/5.8	12.0	11.0	9.2	7.6	5.8	4.9
Watts	2,710/2,740	1,850/1,800	1,220/1,170	1,380	1,220	1,020	820	620	530
Plug Type	Perpendicular	Tandem	Tandem	Parallel/Right Angle	Parallel/Right Angle	Parallel/Right Angle	Parallel/Right Angle	Parallel/Right Angle	Parallel/Right Angle
Energy Saver Feature	●	●		●					
Dehumidification (pints/hr)	7.5	5.5	3.3	4.6	3.3	3.0	2.3	1.5	1.5
Auto Circulaire™	●	●		●					
Fan Speeds (Cool/Fan Only)	3/3	3/3	3/3	3/3	3/3	3/3	3/3	3/3	3/3
CFM (High Shown) (Indoor)	560	440	280	350	310	250	230	140	140
Vent/exhaust	Exhaust	Exhaust	Exhaust	Exhaust	Exhaust	Exhaust	Exhaust		
Thermostat	Electronic	Electronic	Electronic	Electronic	Electronic	Electronic	Electronic	Electronic	Electronic
Filter Type	Rigid Frame/ Slide-Out	Rigid Frame/ Slide-Out	Rigid Frame/ Slide-Out	Rigid Frame/ Slide-Out	Rigid Frame/ Slide-Out	Rigid Frame/ Slide-Out	Rigid Frame/ Slide-Out	Rigid Frame/ Slide-Out	Rigid Frame/ Slide-Out
Chassis	Slide-Out	Slide-Out	Slide-Out	Slide-Out	Slide-Out	Slide-Out	Slide-Out	Fixed	Fixed
Window Mounting	EZ Mount	EZ Mount	EZ Mount	EZ Mount	EZ Mount	EZ Mount	EZ Mount	EZ Mount	EZ Mount
Window Opening Height (min. in inches)	18	18	16	16	16	14	14	13	12
Window Opening Width (in inches) min.	26.5	27	24	24	24	19	19	19	18
max.	41	41	39	39	39	36	36	36	35
Warranty*	Limited 1-Yr.	Limited 1-Yr.	Limited 1-Yr.	Limited 1-Yr.	Limited 1-Yr.	Limited 1-Yr.	Limited 1-Yr.	Limited 1-Yr.	Limited 1-Yr.
Warranty* (Sealed Ref. System) Full 5-Yr.	Limited 5-Yr.	Limited 5-Yr.	Limited 5-Yr.	Limited 5-Yr.	Limited 5-Yr.	Limited 5-Yr.	Limited 5-Yr.	Limited 5-Yr.	Limited 5-Yr.
<b>Case Dimensions</b>									
Height (in inches) A	16-27/32	16-27/32	15	15	15	13-7/8	13-7/8	12-9/32	11-1/8
Width (in inches) B	26	26	23-5/8	23-5/8	23-5/8	18-7/16	18-7/16	18-9/16	17-5/16
Depth (in inches) C	30.5	24-15/16	20-9/32	20-9/32	20-9/32	19-5/32	19-5/32	13-27/32	12-3/8
Depth to louvers (in inches) D	9	10-5/16	8-5/8	8-5/8	8-5/8	8-1/4	8-1/4	6-1/4	4-1/8
Net Weight (lbs.)	165	117	80	87	79	69	60	46	40
Approx. Shipping Weight (lbs.)	183	127	89	96	87	75	66	50	44

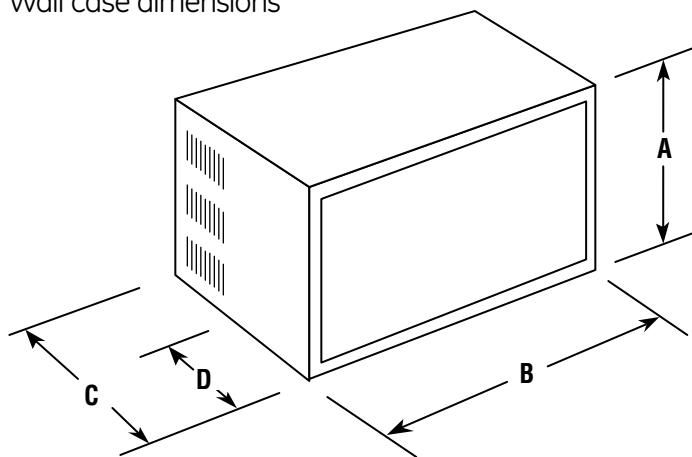
\*See written warranty for details.

# Mechanical room air conditioners (preliminary specifications)

	230 Volt		115 Volt					
	AFV24DJ	AGV18DJ	AGV14AJ	AGV12AJ	AGV10AJ	AGV08AJ	AGV06LJ	AGV05LJ
<b>Features</b>								
ENERGY STAR®-qualified								
BTUH	23,500/23,100	18,000/17,500	13,800	12,000	10,000	8,000	6,000	5,150
Voltage	230/208	230/208	115	115	115	115	115	115
E.E.R. (BTUH/Watt)	8.6/8.6	9.7/9.7	10.0	9.8	9.8	9.8	9.7	9.7
Amps	13.1/12.1	8.2/8.9	12.0	11.0	9.2	7.6	5.8	4.9
Watts	2,710/2,740	1,850/1,800	1,380	1,220	1,020	820	620	530
Plug Type	Perpendicular	Tandem	Parallel	Parallel	Parallel	Parallel	Parallel	Parallel
Energy Saver Feature	●	●	●					
Dehumidification (pints/hr.)	7.5	5.5	4.6	3.3	3.0	2.3	1.5	1.5
Auto Circulaire™	●	●	●					
Fan Speeds (Cool/Fan Only)	3/2	3/2	3/2	3/2	3/2	3/2	3/2	2/2
CFM (High Shown) (Indoor)	590	440	350	310	250	230	140	140
Vent/exhaust	Exhaust	Exhaust	Exhaust	Exhaust	Exhaust	Exhaust		
Thermostat	7-Position	8-Position	8-Position	8-Position	8-Position	8-Position	8-Position	Adjustable
Filter Type	Rigid Frame/ Slide-Out	Rigid Frame/ Slide-Out	Rigid Frame/ Slide-Out	Rigid Frame/ Slide-Out	Rigid Frame/ Slide-Out	Rigid Frame/ Slide-Out	Rigid Frame/ Slide-Out	Rigid Frame/ Slide-Out
Chassis	Slide-Out	Slide-Out	Slide-Out	Slide-Out	Slide-Out	Slide-Out	Fixed	Fixed
Window Mounting	EZ Mount	EZ Mount	EZ Mount	EZ Mount	EZ Mount	EZ Mount	EZ Mount	EZ Mount
Window Opening Height (min. in inches)	18	18	16	16	14	14	13	12
Window Opening Width (in inches) min.	26.5	27	24	24	19	19	19	18
max.	41	41	39	39	36	36	36	35
Warranty*	Limited 1-Yr.	Limited 1-Yr.	Limited 1-Yr.	Limited 1-Yr.	Limited 1-Yr.	Limited 1-Yr.	Limited 1-Yr.	Limited 1-Yr.
Warranty* (Sealed Ref. System) Full 5-Yr.	Limited 5-Yr.	Limited 5-Yr.	Limited 5-Yr.	Limited 5-Yr.	Limited 5-Yr.	Limited 5-Yr.	Limited 5-Yr.	Limited 5-Yr.
<b>Case Dimensions</b>								
Height (in inches) A	16-27/32	16-27/32	15	15	13-7/8	13-7/8	12-9/32	11-1/8
Width (in inches) B	26	26	23-5/8	23-5/8	18-7/16	18-7/16	18-9/16	17-5/16
Depth (in inches) C	30.5	24-15/16	22-1/2	22-1/2	19-5/32	19-5/32	13-27/32	12-3/8
Depth to louvers (in inches) D	9	10-5/16	8-5/8	8-5/8	8-1/4	8-1/4	6-1/4	4-1/8
Net Weight (lbs.)	165	117	87	79	69	60	46	40
Approx. Shipping Weight (lbs.)	185	127	96	87	75	66	50	44

\*See written warranty for details.

## Wall case dimensions



D = Distance from front of case to side louvers (excluding grille).

Note: When installing slide out chassis units in through-the-wall applications, keep louvers free. Do not restrict air flow areas. Fixed chassis units are not suitable for through-the-wall applications.

## Wall outlets



**Parallel**  
115V.  
15 Amp.



**Perpendicular**  
230/208V.  
20 Amp.



**Tandem**  
230/208V.  
15 Amp.



**Large Tandem**  
230/208V.  
30 Amp.

### Wall Outlets

All wiring, including installation of receptacle, must be made in accordance with local electrical codes and regulations. Electrical outlet should be in reach of line cord.

**Note:** Aluminum building wiring may pose special problems— consult a qualified electrician.

## Slide-Aire room air conditioners (preliminary specifications)

	GE®	
	AGX10AJ	AGX08FJ
<b>Features</b>		
BTUH	10,000	8,000
Voltage	115	115
E.E.R. (BTUH/Watt)	9.5	9.5
Amps	9.6	7.7
Watts	1,050	840
Plug Type	Parallel	Parallel
Dehumidification (pints/hr.)	3.5	2.3
Fan Speeds (Cool/Fan Only)	3/2	3/2
CFM (High Shown) (Indoor)	280	250
Vent/exhaust	Exhaust	Exhaust
Thermostat	10-Position	10-Position
Filter Type	Rigid frame/ Slide-out	Rigid frame/ Slide-out
Chassis	Fixed	Fixed
Window Mounting	V-Std. Mount	V-Std. Mount
min.	21-1/2	21-1/2
Window Opening Height max.	40-1/2	40-1/2
Window Opening Width (in inches) min.	15	15
Warranty*	Limited 1-Yr.	Limited 1-Yr.
Warranty* (Sealed Ref. System)	Limited 5-Yr.	Limited 5-Yr.
<b>Case Dimensions</b>		
Height (in inches) A	20-1/2	20-1/2
Width (in inches) B	14-1/2	14-1/2
Depth (in inches) C	23	23
Depth to louvers (in inches) D	9	9
Net Weight (lbs.)	76-1/4	64
Approx. Shipping Weight (lbs.)	88.5	76.3

\*See written warranty for details.

## Heat/cool series (preliminary specifications)

	GE			
	AGE21DJ	AGE18DJ	AGE12DJ	AGE07AJ
<b>Model</b>				
<b>Voltage</b>	<b>230/208</b>	<b>230/208</b>	<b>230/208</b>	<b>115</b>
<b>Cooling Capacity</b>				
BTUH-AHAM	21,000/20,500	18,000/17,500	12,000/11,500	6,900
Amps-AHAM	10.8/11.8	8.3/9.0	5.5/5.8	6.6
Watts Input	2,470/2,410	1,850/1,800	1,220/1,170	710
EER	8.5/8.5	9.7/9.7	9.8/9.89	9.7
Dehumidification (Pts./Hr.)	6.3	5.5	3.3	2.3
<b>Electric Resistance Heating</b>				
BTUH	11,600/9,400	11,600/9,400	11,200/9,200	3,850
Amps	16/15	16/15	15.3/14	11.0
Watts Input @ 230V	3,720/3,150	3,670/3,100	3,500/2,900	1,260
<b>Features</b>				
Line Cord Plug	Perp.	Perp.	Perp.	Perp.
Recommended Circuit Protection (Time Delay)	20 Amps	20 Amps	20 Amps	20 Amps
Fan Speeds, Heating/Cooling	2/2	2/2	2/2	2/2
Fan Only Setting	1	1	1	1
Air Flow (CFM) Roomside Hi/Low	405	425	300	205
Air Exchange Exhaust	●	●	●	●
Rotary Compressor	●	●	●	●
Slide-Out Chassis	●	●	●	●
Window Installation Kit	EZ Mount	EZ Mount	EZ Mount	EZ Mount
Approximate Net Weight (Lbs.)	135	120	90	69
Approximate Shipping Wt. (Lbs.)	143	133	96	75
<b>Case Dimensions</b>				
Height (in inches)	16-27/32	16-27/32	15	13-7/8
Width (in inches)	26	26	23-5/8	18-7/16
Depth (in inches)	24-15/16	24-15/16	20-9/32	19-5/32
Approx. Shipping Weight (lbs.)	143	133	96	75
Net Weight (lbs.)	135	120	90	69



## Dehumidifiers (preliminary specifications)

Features	GE		
	ENERGY STAR®	ENERGY STAR	AHG30LJ
	AHG50LJ	AHG40LJ	
Dehumidification (pints/day)	50	40	30
Dry Airflow (CFM)	125/115	125/115	140/127
Color	Cameo White	Cameo White	Cameo White
Auto Shut Off	●	●	●
Automatic Defrost	●	●	●
Water Full indicator	●	●	●
Fan speeds	2	2	2
Removable bucket	●	●	●
Bucket capacity (pints)	21	21	21
External drain connector	●	●	●
Casters - 4 movable	●	●	●
Voltage	115	115	115
Watts	600	580	480
Amps	6.0	5.4	5.8
Circuit size (Amps)	15	15	15
Plug type	Parallel	Parallel	Parallel
Case Dimensions			
Height (in inches)	20-7/8	20-7/8	20-7/8
Width (in inches)	12-5/8	12-5/8	12-5/8
Depth (in inches)	17-1/8	17-1/8	17-1/8
Approx. Shipping Weight (lbs.)	43.2	40.1	52.6
Net Weight (lbs.)	39.5	36.14	48.7

## Low profile room air conditioners (preliminary specifications)

Features	GE	
	AGP07LJ	
BTUH	6,500	
Voltage	115	
EER (BTUH/Watt)	9.8	
Amps	6.1	
Watts	680	
Plug Type	Parallel	
Dehumidification (pints/hr)	1.6	
Auto Circulaire™		
Fan Speeds (Cool/Fan Only)	3/3	
CFM (High Shown) (Indoor)	212	
Thermostat	Electronic	
Filter Type	Rigid Frame/ Slide-out	
Chassis	Fixed	
Window Mounting	EZ Mount	
Window Opening Height (min. in inches)	12	
Window Opening Width (in inches) min.	22	
max.	40	
Warranty*	Limited 1-Yr.	
Warranty* (Sealed Ref. System)	Limited 5-Yr.	
Case Dimensions		
Height (in inches) A	12	
Width (in inches) B	20-13/15	
Depth (in inches) C	18-1/32	
Depth to louvers (in inches) D	1-7/8	
Net Weight (lbs.)	55	
Approx. Shipping Weight (lbs.)	62	

\*See written warranty for details.

## Built-in “J” series—cool only

	GE®														
	Electronic Units					Mechanical Units					High-Mount Units				
Models	AJCQ06LCB	AJCQ08ACB	AJCQ10ACB	AJCQ10DCB	AJCQ12DCB	AJCS06LCB	AJCS08ACB	AJCS10ACB	AJCS09DCB	AJCS10DCB	AJCS12DCB	AJCH08ACB	AJCH10ACB	AJCH10DCB	AJCH12DCB
ENERGY STAR®	●	●	●	●	●	●	●	●	●	●	●	●	●	●	●
Voltage	115	115	115	230/208	230/208	115	115	115	230/208	230/208	230/208	115	115	230/208	230/208
Cooling Capacity															
BTUH-AHAM	6000	8000	9900	9900/9700	11600/11400	6000	8000	9900	8900/8700	9900/9700	11600/11400	8000	9900	9900/9700	11600/11400
Amps-AHAM	5.7	7.9	9.7	4.9/5.3	5.8/6.3	5.7	7.9	9.7	4.2/4.6	4.9/5.3	5.8/6.3	7.9	9.7	4.9/5.3	5.8/6.3
Watts Input	600	840	1040	1040/1020	1220/1200	600	840	1040	935/915	1040/1020	1220/1200	840	1040	1040/1020	1220/1200
EER	10.0	9.5	9.5	9.5/9.5	9.5/9.5	10.0	9.5	9.5	9.5/9.5	9.5/9.5	9.5/9.5	9.5	9.5	9.5/9.5	9.5/9.5
Dehumidification (Pts./Hr.)	1.4	2.1	2.9	2.9	3.4	1.4	2.1	2.9	2.5	2.9	3.4	2.1	2.9	2.9	3.4
Features															
Line Cord Plug	Parallel	Parallel	Parallel	Tandem	Tandem	Parallel	Parallel	Parallel	Tandem	Tandem	Tandem	Parallel	Parallel	Tandem	Tandem
Recommended Circuit Protection (Time Delay)	15 Amps	15 Amps	15 Amps	15 Amps	15 Amps	15 Amps	15 Amps	15 Amps	15 Amps	15 Amps	15 Amps	15 Amps	15 Amps	15 Amps	15 Amps
Fan Speeds	3	3	3	3	3	2	2	2	2	2	2	2	2	2	2
Fan Only Setting	3	3	3	3	3	2	2	2	2	2	2	2	2	2	2
Air Flow (CFM) Roomside Hi/Low	212/184	240/212	282/254	282/254	304/279	212/184	240/212	282/254	282/254	282/254	304/279	240/212	282/254	282/254	304/279
Air Exchange Exhaust	●	●	●	●	●	●	●	●	●	●	●	●	●	●	●
Fan Cycle Switch	●	●	●	●	●	●	●	●	●	●	●	●	●	●	●
Rotary Compressor	●	●	●	●	●	●	●	●	●	●	●	●	●	●	●
Slide-Out Chassis	●	●	●	●	●	●	●	●	●	●	●	●	●	●	●
Installation	In Wall	In Wall	In Wall	In Wall	In Wall	In Wall	In Wall	In Wall	In Wall	In Wall	In Wall	In Wall	In Wall	In Wall	In Wall
Wall Case Required	RAB46/47/48	RAB46/47/48	RAB46/47/48	RAB46/47/48	RAB46/47/48	RAB46/47/48	RAB46/47/48	RAB46/47/48	RAB46/47/48	RAB46/47/48	RAB46/47/48	RAB46/47/48	RAB46/47/48	RAB46/47/48	RAB46/47/48
Approximate Net Weight (lbs.)	63	68	77	77	79	63	68	77	69	77	79	69	78	78	80
Approximate Shipping Wt. (lbs.)	72	77	86	86	88	72	77	86	79	86	88	78	87	87	89

## Built-in “J” series—heat/cool and heat pumps

	GE®									
	Heat/Cool Units						High-Mount	Heat Pumps		
Model	AJES06LSB*	AJES08ASB*	AJES10DSB	AJES09DCB	AJES10DCB	AJES12DCB	AJEH12DCB	AJHS08ASB*	AJHS08DCB	AJHS10DCB
ENERGY STAR								●	●	●
Voltage	115	115	230/208	230/208	230/208	230/208	230/208	115	230/208	230/208
Cooling Capacity										
BTUH-AHAM	6000	8000	9900/9700	8900/8700	9900/9700	11600/11400	11600/11400	8000	8000/7800	9900/9700
Amps-AHAM	5.7	7.9	4.9/5.3	4.2/4.6	4.9/5.3	5.8/6.3	5.8/6.3	7.9	4.0/4.3	4.9/5.3
Watts Input	600	840	1040/1020	935/915	1040/1020	1220/1200	1220/1200	840	840/820	1040/1020
EER	10.0	9.5	9.5/9.5	9.5/9.5	9.5/9.5	9.5/9.5	9.5/9.5	9.5	9.5/9.5	9.5/9.5
Dehumidification (Pts./Hr.)	1.4	2.1	2.9	2.5	2.9	3.4	3.4	2.1	2.1	2.9
Reverse Cycle Heating										
BTU-AHAM								7700	7700/7500	9700/9500
C.O.P. at 47°F.								3.0	3.0/3.0	3.0/3.0
Amps-AHAM								6.8	3.4/3.7	4.3/4.7
Watts Input								750	750/730	950/930
Electric Resistance Heating										
BTUH	4100	4100	11600/9500	11600/9500	11600/9500	11600/9500	11600/9500	4100	11600/9500	11600/9500
Amps	12.0	12.0	16.0	16.0	16.0	16.0	16.0	12.0	16.0	16.0
Watts Input @ 230V	1380	1380	3670/3010	3670/3010	3670/3010	3680/3020	3680/3020	1380	3660/3000	3680/3020
Features										
Line Cord Plug	Parallel	Parallel	Perp.	Perp.	Perp.	Perp.	Perp.	Parallel	Perp.	Perp.
Recommended Circuit Protection (Time Delay)	15 Amps	15 Amps	20 Amps	20 Amps	20 Amps	20 Amps	20 Amps	15 Amps	20 Amps	20 Amps
Fan Cycle Switch	●	●	●	●	●	●	●	●	●	●
Fan Speeds, Heating/Cooling	2/2	2/2	2/2	2/2	2/2	2/2	2/2	2/2	2/2	2/2
Fan Only Setting	2	2	2	2	2	2	2	2	2	2
Air Flow (CFM) Roomside Hi/Low	212/184	240/212	282/254	282/254	282/254	304/279	304/279	237/212	237/212	304/279
Air Exchange Exhaust	●	●	●	●	●	●	●	●	●	●
Rotary Compressor	●	●	●	●	●	●	●	●	●	●
Slide-Out Chassis	●	●	●	●	●	●	●	●	●	●
Installation	Window/Wall	Window/Wall	Window/Wall	In Wall	In Wall	In Wall	In Wall	Window/Wall	In Wall	In Wall
Wall Case Required	Included	Included	Included	RAB46/47/48	RAB46/47/48	RAB46/47/48	RAB46/47/48	Included	RAB46/47/48	RAB46/47/48
Window Installation Kit	Std. Mount	Std. Mount	Std. Mount	Optional	Optional	Optional	Optional	Std. Mount	Optional	Optional
Approximate Net Weight (Lbs.)	82	87	96	71	78	80	81	91	73	82
Approximate Shipping Wt. (Lbs.)	97	102	111	80	88	90	90	106	82	91

All cooling with electric heat models and heat pumps are corrosion treated. Specifications and design subject to change without notice. \*These units are not intended to be the primary source of heat.

### Air conditioner tips

**Air flow** – Keep air filters clean. Do not block air flow areas.

**Roomside view** – J-models feature concealed power cord storage, this eliminates excessive cord exposure when receptacle is located close to unit.

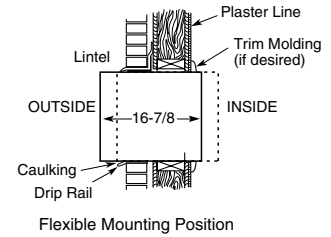
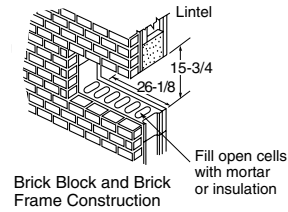
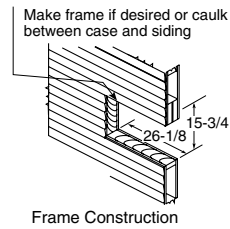
### Accessories

Other accessories are available, they include: Fedders and Whirlpool sleeve adapters. Drain kits and Chassis adapters for old Hotpoint cases.

# Built-in room air conditioners wall opening for RAB46/47/48 cases

A finished opening of 26-1/8" x 15-3/4", clear of intrusions, is required. Keep clearance of 4" from side walls. Brick veneer or frame walls should have wood studding surrounding case to provide firm anchoring with screws. Case can be fastened directly to brick or block walls with screws sunk in lead expansion shields.

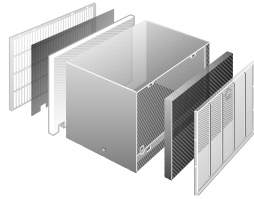
**Note:** Units should be caulked on all four sides of case to the building exterior to assure building integrity.



**Two wall cases for tenant option installation**  
When the air conditioner is offered as a tenant option, these wall cases provide protection against outside elements.

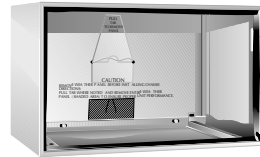
**RAB47**—includes wall case, exterior grille and steel closure panels.

**RAB48**—includes wall case, exterior grille, steel closure panel and two layers of insulation.



## Standard wall case RAB46

Solid-sided wall case fabricated of galvanized steel with baked enamel finish. Welded areas are coated with a sealing compound to help resist rust and corrosion. Polymer gasket surrounds opening to assure tight weather seal. Aluminum grille (RAG13) is included. Panels on interior and between case and grille provide weather protection prior to installation of chassis.



**Parallel**  
115V.  
15 Amp.



**Tandem**  
230/208V.  
15 Amp.



**Perpendicular**  
230/208V.  
20 Amp.

## Wall outlets

All wiring, including installation of receptacle, must be made in accordance with local electrical codes and regulations. Electrical outlet should be in reach of line cord.

**Note:** Aluminum wiring may pose special problems—consult a qualified electrician.

**Note:** Some models may not be available in your area due to local legislation. Contact your local dealer.

**Note:** When installing slide out chassis units in through-the-wall applications, keep louvers free. Do not restrict air flow areas. Fixed chassis units are not suitable for through-the-wall applications.



Listed by  
Underwriters  
Laboratories



Total capacity and E.E.R. ratings are calculated based on the Association of Home Appliance Manufacturers' standards.

# Point-of-purchase materials

## Three tier RAC display



Pub no. 26-D059



## A century of quality and innovation

For more than a century, GE has been committed to producing innovative products that change the way people live. The result of thorough research and rigorous testing, GE appliances are designed for years of dependable performance. Today, the GE tradition of quality and innovation continues.

**GE Consumer & Industrial**  
Appliances  
General Electric Company  
Louisville, KY 40225  
[ge.com](http://ge.com)

Before purchasing an appliance, read important information about its estimated annual energy consumption or energy efficiency rating that is available from your retailer or [ge.com](http://ge.com)

GE has a policy of continuous improvement of its products and reserves the right to change materials and specifications without notice.

© 2005 GE Company  
Pub. No. 26-X025 PC42080