



quick installation guide

Instructions en Français - Voir le *Manuel d'utilisation et d'installation* • Instrucciones en Español - Ver el *Manual del propietario e instalación*

This quick reference guide is provided for informational purposes only and does not replace, modify or change in any manner the *Owner's Manual & Installation Instructions*.



DO NOT DISCARD. RETAIN FOR FUTURE USE.

! WARNING

- Clothes dryer installation must be performed by a qualified installer.
- Install the clothes dryer according to the *Owner's Manual & Installation Instructions* and in accordance with local codes.
- **DO NOT** install or store this appliance in any location where it could be exposed to water and/or weather.
- The dryer **MUST** be exhausted to the outdoors.

NOTE: This appliance must be properly grounded and installed as described in these steps and the Owner's Manual. Electrical service to the dryer must conform with local codes and ordinances and the latest edition of the National Electrical Code, ANSI/NFPA 70 or Canadian Electrical Code, CSA C22.1. Gas installations must conform with local codes, or in the absence of local codes, with the National Fuel Gas Code, ANSI Z223.1/NFPA 54, or the Natural Gas and Propane Installation Code, CSA B149.1.

1 Unpack your dryer & tools and materials needed

PARTS SUPPLIED

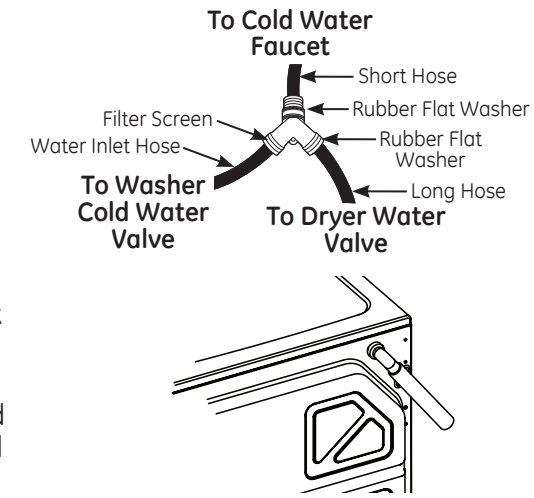
- Water hoses (2)
- "Y" Connector
- Owner's Manual & Installation Instructions

TOOLS NEEDED

- Slip-joint pliers
- Flat-blade screwdriver
- Phillips screwdriver
- Level
- 8" Pipe wrench (Gas models only)
- 10" Adjustable wrenches (2) (Gas models only)
- 4" dia. metal elbow
- 3/4" strain relief (UL recognized)
- 4" duct clamps (2) or 4" spring clamps (2)
- Safety glasses and gloves
- 4" dia. metal duct (recommended)
- 4" dia., UL-listed flexible metal duct (if needed)
- Exhaust hood
- Duct tape
- Dryer power cord kit (not provided with dryer) UL rated 120/240V, 30A with 3 or 4 prongs. Identify plug type as per house receptacle before purchasing line cord.
- Pipe compound
- Flexible gas line connector
- Soap solution for leak detection

2 Connect hoses to the dryer

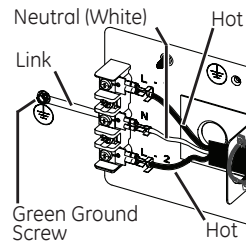
- Turn the cold water faucet off and remove the washer inlet hose from the washer fill valve.
- Connect hoses as shown ensuring that rubber flat washers and filter screens are placed as required. Hand tighten all connections and then tighten them another 2/3 turn with pliers.
- Turn on the water faucet and check for leaks around the "Y" connector, faucet, and hose couplings.
- Ensure hoses do not become kinked when moving the dryer into its final position.



3 Connect power cord

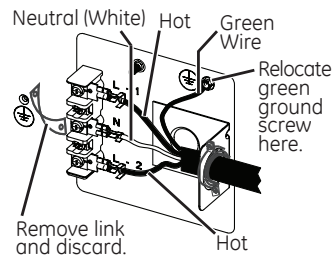
- Determine the type of outlet available for your dryer (3 or 4 prong).
- Turn off the dryer's circuit breaker or remove the dryer's circuit fuse at the electrical box.
- Remove power cord cover located at bottom right.
- Connect wires as shown for applicable outlet type.
- Properly secure power cord at strain relief.
- Reinstall the cover.

3-Wire Connection:



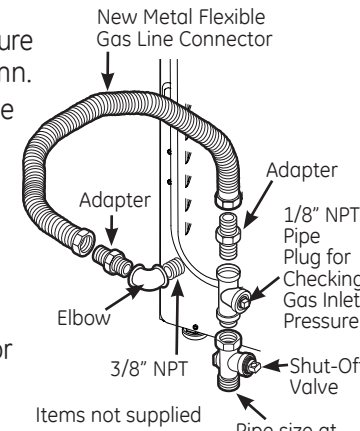
OR

4-Wire Connection:



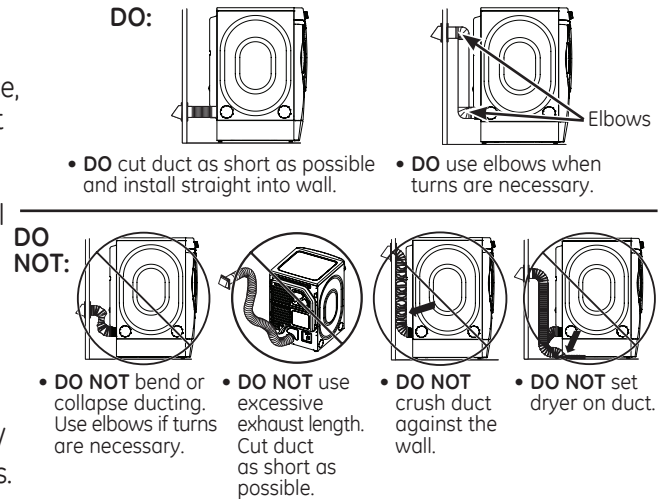
4 Connect dryer to gas supply (Gas models only)

- Ensure that a shut-off valve is installed.
- If connected to LP gas, have a qualified person make sure the gas pressure does not exceed 13" water column.
- Always use a new CSA International approved flexible gas supply line. Never re-use old flexible connectors.
- Securely tighten all gas connections as shown with a pipe and adjustable wrench. Use pipe thread compound appropriate for natural or LP gas, or use Teflon® tape.
- Open the gas shut-off valve.
- Check all connections for leaks with soapy solution or equivalent.
- If leaks are found, close the gas shut-off valve, re-tighten the joint and repeat.



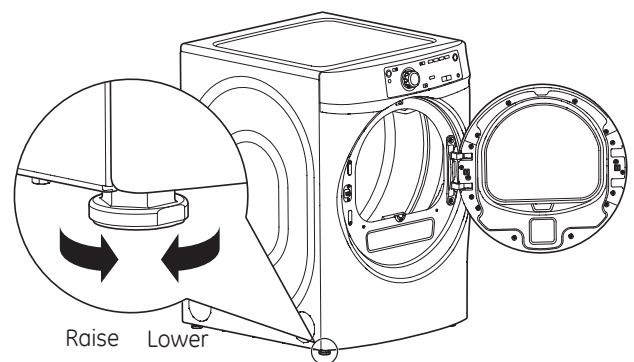
5 Connect the dryer exhaust duct

- Dryer must always be exhausted to the outdoors.
- For best drying performance, a rigid metal transition duct is recommended. If rigid metal duct cannot be used, then UL-listed flexible metal (semi-rigid) ducting can be used.
- Please refer to the Owner's Manual & Installation Instructions for installation venting requirements as well as instructions for side/bottom venting conversions.



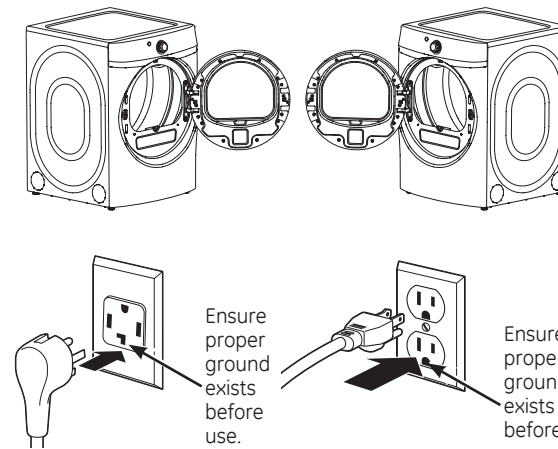
6 Level the dryer

- Rock the dryer into its final location and place a level on top.
- Adjust the front leveling legs up or down using an adjustable wrench.
- Level the dryer both side-to-side and front-to-back.
- If your dryer is on a riser, turn lock nuts up towards the base of the dryer and tighten with the adjustable wrench.



7 Reverse dryer door swing (if desired) and plug the dryer in

- If desired, the door swing direction can be reversed on your dryer.
- Please follow the door reversal instructions in your Owner's Manual & Installation Instructions.
- Plug your dryer into a grounded outlet. Do not use an extension cord or adaptor plug.



8 Final installation checklist and test cycle

- Main power is turned on.
- The dryer is plugged in.
- Dryer power cord is securely and correctly connected.
- Hoses are securely connected.
- Faucets are turned on.
- Dryer is securely connected to the home vent and is exhausting to the outdoors.
- On gas models, gas supply is securely connected and has been checked for leaks.
- Run a load of garments in the **Time Dry** cycle.
- When the load is tumbling, ensure that the dryer and leveling legs are stable.
- If necessary, adjust the front leveling legs while the dryer is still tumbling until the dryer is properly leveled.
- Stop the unit after 5 minutes by opening the door and check the garments to ensure they are warm.

Dry Cycles

The dry cycle controls the length and tumble speed of the drying process. The chart below will help you match the dry setting with the loads you are using.

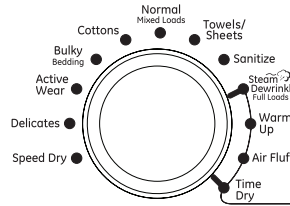
Quick Start

- 1 Press the **Power** button.

If the screen is dark, a press of the Power button will "wake up" the display.



- 2 Select a dry cycle. (Defaults are set for each cycle. These default settings can be changed. See **Control settings** for more information.)



- 3 Press the **Start/Pause** button.



Dry Cycles

The dry cycle controls the length and tumble speed of the drying process. The chart below will help you match the dry setting with the loads.

Normal/Mixed Loads	For loads consisting of cottons and poly-blends.
Cottons	For cottons and most linens.
Bulky Bedding	For large coats, bed spreads, mattress covers, sleeping bags, blankets, comforters, jackets, small rugs, and similar large and bulky items.
Active Wear	Clothing worn for active sports exercise and some casual wear. Fabrics include new technology finishes and stretch fibers such as Spandex. Also for clothing labeled Easy Care or Perma Press: For wrinkle-free and permanent press items.
Delicates	For lingerie and special-care fabrics.
Speed Dry	For small loads that are needed in a hurry, such as sports or school uniforms. Can also be used if the previous cycle left some items damp, such as collars or waistbands.
Towels-Sheets	Use for towels OR sheets. It is not recommended to mix towels and sheets in the same load.
Sanitize	Reduces certain types of bacteria by 99.8%, including: Staphylococcus aureus, Pseudomonas aeruginosa, and Klebsiella pneumoniae. The antibacterial process occurs when high heat is used during a portion of this drying cycle.
Steam Dewrinkle/ Full Loads	Ideal for loads left in dryer for an extended time.
Warm Up	Provides 10 minutes of warming time to warm up clothes.
Air Fluff	Use to tumble items without heat.
Time Dry	Use to set your own dry time. Time Dry is also recommended for small loads. To use: <ol style="list-style-type: none"> 1. Turn dry cycle dial to Time Dry. 2. Increase the drying time by pressing the Add Time button. Note: This button only increases the time. When max time is reached, pressing the button again will reset the counter to the lowest setting. <ol style="list-style-type: none"> 3. Select the Temp. 4. Close the door. 5. Press Start/Pause.

Drying Options

Your dryer comes equipped with several options to assist in drying. The chart below provides an explanation and recommendations for exercising these options.

Temp

Dry Temp

You can change the temperature of your dry cycle.

High	For regular to heavy cottons.
Medium	For synthetics, blends and items labeled Permanent Press.
Low	For delicates, synthetics and items labeled Tumble Dry Low.
Extra Low	For lingerie and special-care fabrics.
No Heat	This option may only be used with Air Fluff , in which items are tumbled without heat.

Level

Sensor Dry Level

The sensor continuously monitors the amount of moisture in the load. When the moisture in your clothes reaches your selected dry level, the dryer will stop.

NOTE: Sensor dry **Level** only works with **Cottons, Normal, Active Wear, Delicates, Speed Dry, Bulky, Towels-Sheets, Sanitize** and **Steam Dewrinkle** cycles.

Extra Dry (on some models)	Use for heavy-duty fabrics or items that should be very dry, such as towels.
More Dry	Use for heavy or mixed type of fabrics.
Dry	Use for normal dryness level suitable for most loads. This is the preferred cycle for energy saving.
Less Dry	Use for lighter fabric (ideal for ironing).
Damp	For leaving items partially damp.

My Cycle



Hold 3 Seconds to Store

My Cycle

Set up your favorite combination of settings and save them here for one touch recall. These custom settings can be set while a cycle is in progress.

To store a My Cycle combination of settings:

1. Select your drying cycle.
2. Change **Temp** and **Level** settings to fit your needs.
3. Select any drying options you want.
4. Press and hold the **My Cycle** button for 3 seconds to store your selection. A beep will sound and the button will light up.

To recall your stored My Cycle combination:

Press the **MY CYCLE** button before drying a load.

To change your stored My Cycle combination:

Repeat steps 1-4.

Steam Refresh



1-5 Items

Steam Refresh Cycle

For slightly wrinkled dry garments. Significantly reduces wrinkles on up to 5 garments. After the **Steam Refresh** Cycle, the unit will beep and display "0:00." If the unit is not turned off or if the door is not opened, the dryer will continue to tumble for 30 minutes. At the end of 30 minutes, it will display "0:00" and the cycle will be complete. **NOTE:** A single extremely light fabric item may need to have an additional item included to achieve optimum results.

Detangle

Detangle (on some models)

Activates reverse tumbling to reduce tangling, dry more evenly, and improve drying times. Typical loads such as bed and bath mixed loads, where sheets, towels and pillow cases are laundered together, benefit from this capability. When the dryer reverses direction, there will be a slight pause and sound change. This is normal.

eDry

eDry

Reduces the total energy consumption of specific dryer cycles by adjusting certain heat settings.

This cycle can be used with **Cottons, Normal, Active Wear, Delicates, Speed Dry, Bulky, Towels-Sheets, Sanitize** and **Steam Dewrinkle**.

NOTE: Cycle times will change when e-Dry is selected.

Ext Tumble

Extended Tumble

Minimizes wrinkles by adding approximately 60 minutes of no-heat tumbling after clothes are dry. The beeper will sound every five minutes as a reminder to remove the clothes.

The estimated time remaining display will show "0:00".

The extended tumble time does not get added to the cycle time on the display.

Delay Dry

Delay Dry

Use to delay the start of your dryer.

1. Choose your dry cycle and any options.
2. Press **Delay Dry**. You can change the delay time in 1 hour increments, using the **Delay Dry** button.
3. Press the **Start/Pause** button to start the countdown.

NOTE: If the door is opened while the dryer is in **Delay Dry**, the countdown time will not restart unless the door is closed and **Start/Pause** button has been pressed again.