

THE GE LINE OF AIR COMFORT PRODUCTS FOR 2001

The #1 Preferred Brand of Room Air Conditioners



New complete line of GE Profile™ with remote controlled electronics



We bring good things to life.



GE...THE #1 PREFERRED BRAND OF ROOM AIR CONDITIONERS

GE continually strives to bring you the best products. This is why consumers prefer GE Room Air Conditioners more than any other brand. Year after year, when it comes to room air conditioners, GE's complete line of Air Comfort Products is most preferred. Our brand is strong because the products we offer are strong. Our units have high Energy Efficient Ratios, and all of our models meet stricter 2001 compliant requirements. When purchasing a window air conditioner, 60% of consumers consider the brand, and the majority of consumers choose GE. That's why GE has:

- **#1 brand commitment among owners**
- **#1 brand consideration rate**
- **#1 market share gain in the last 3 years.**

THE NEW GE PROFILE™ FEATURE, SLEEP MODE, TAKES COMFORT CONTROL TO A HIGHER LEVEL.



GE continually strives to bring you the best products and the GE Profile™ Electronic Remote Controlled Room Air Conditioners are a perfect example.

The electronic thermostats take all the guesswork out of adjusting the room temperature because they allow you to set the temperature to an exact level, versus using rotary knobs. Our newest feature, Sleep Mode, raises the temperature of a room two degrees after one hour. This helps save energy during the night while maintaining your comfort level.



All GE Profile™ Room Air Conditioners are also equipped with Circulaire™, a feature that projects and circulates air for better cooling distribution. Another feature is the electronic Timer, which allows GE Profile™ Room Air Conditioners to turn on or off automatically up to 24 hours.

GE PROFILE™ ROOM AIR CONDITIONERS

ALL MODELS INCLUDE: • Energy Saver Feature • Multiple Cooling Speeds • Vent/Exhaust • Adjustable Thermostat
• EZ Mount Window Kit • Remote Control • Sleep Mode • 24 Hour Timer • 4 Way Adjustable Air Discharge
• One Touch Lift Out Filter • Slide-Out Chassis



SLIDE-OUT CHASSIS

- All 6,000 BTU units and higher have slide-out chassis for ease of installation



SLEEP MODE

- Saves energy and money while you sleep comfortably
- Set the Room Air Conditioner at your desired room temperature and after one hour the unit automatically increases the temperature two degrees and then maintains that temperature while you sleep



ENERGY SAVER

- Save energy and money with the touch of a button
- Energy Saver feature shuts down the compressor and fan once a room is cool enough



CIRCULAIRE™

- Oscillating louvers automatically distribute the air evenly in a room
- Creates a cooler, more even temperature throughout the room

GE PROFILE™ ROOM AIR CONDITIONERS



REMOTE CONTROL

- Comfort with the touch of a button
- Electronic thermostat and remote control put precision comfort at your fingertips
- Available on all GE Profile™ Room Air Conditioners
- Electronic Thermostat lets you set an exact temperature for total room comfort
- Remote control allows temperature adjustment from anywhere in the room

MODEL	BTU	EER	VOLTS	COOLS (Sq. Ft.)
ASM24DB	23,700/23,100	8.8/8.8	230/208	1480-1620
ASM22DB	22,000/21,500	8.8/8.8	230/208	1330-1450
ASM18DB	18,000/17,500	10.0/10.0	230/208	1050-1150
ASM16DB	15,600/15,200	9.7/9.7	230/208	890-990
ASM14AB	14,000	10.0	115	750-850
ASM12DB	12,500/12,200	10.0/10.0	230/208	625-700
ASM12AB	12,500	10.0	115	625-700
ASM10AB	10,000	10.0	115	425-525
ASM08FB	8,000	10.0	115	250-350
ASM06LC	6,000	10.0	115	170-210

GE ROOM AIR CONDITIONERS

ALL MODELS INCLUDE: • Multiple Cooling Speeds

• 8-Position Thermostat • Rigid Slide-Out Filter

• EZ Mount Window Kit • Vent Exhaust



QUICK CLEAN FILTERS

- Clean filters keep a unit running efficiently, saving money
- Cleaning GE filters is quick and easy
- Simply slide out filter, wash and replace

EASY MOUNT INSTALLATION

- GE units are designed for ease of placement
- Can be installed by most people
- Requires no prior experience or special tools



EFFICIENCY

- Higher EER's (Energy Efficient Ratio) mean greater efficiency & lower operating costs
- An EER of 10.0 compared to 9.0 can mean 10% energy savings with the same amount of cooling
- All GE models meet stricter 2001 EER compliant requirements



MODEL	BTU	EER	VOLTS	COOLS (Sq. Ft.)
ASV24DA	23,700/23,100	8.5/8.5	230/208	1480-1620



MODEL	BTU	EER	VOLTS	COOLS (Sq. Ft.)
ASV18DB	18,000/17,500	9.7/9.7	230/208	1000-1100
ASV14AB	14,000	10.0	115	750-850
ASV12AB	12,500	9.8	115	575-650

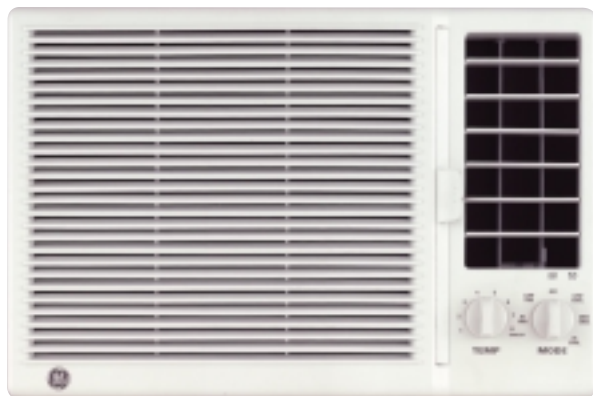


MODEL	BTU	EER	VOLTS	COOLS (Sq. Ft.)
ASV10AB	10,000	9.8	115	425-525
ASV08FA	8,000	9.8	115	250-350
ASV06LB	6,000	9.8	115	170-210

GE ROOM AIR CONDITIONERS



MODEL	BTU	EER	VOLTS	COOLS (Sq. Ft.)
AGV12DC	12,000	9.8	230/208	575-650
AGV07LB	7,000	9.7	115	210-280



MODEL	BTU	EER	VOLTS	COOLS (Sq. Ft.)
ASV05LB	5,000	9.7	115	100-150

Why Buy GE Room Air Conditioners?

- #1 Preferred brand of room air conditioners*
- Eye catching cartons ready for Stack & Sell
- Industry leading product logistics and distribution
- Six Sigma design and quality specifications
- Vast factory service and customer care network
- National parts distribution organization
- GE Answer Center 1-800-626-2000, taking consumer calls 365 days a year/24 hours a day

*Source - The Stevenson Company/Sector Survey

SLIDE-AIRE ROOM AIR CONDITIONERS

ALL MODELS INCLUDE: • 10-Position Thermostat

- Vertical Slider Kit Panel • Multiple Cooling and Fan Speeds
- Two-Way Adjustable Air Discharge



Accessible for Non-Standard Windows - Slide-Aire models accommodate the special installation needs of sliding and casement windows (those with side hinges that open in or out).



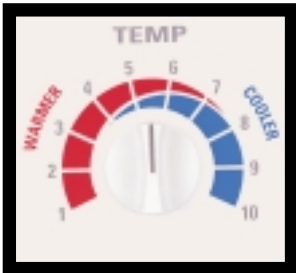
Contemporary Styling - The sleek new design blends quietly with most decor.



MODEL	BTU	EER	VOLTS	COOLS (Sq. Ft.)
AVX10AD	10,000	9.5	115	425-525
AVX08FB	7,600	9.5	115	210-280

HEAT/COOL SERIES

- ALL MODELS INCLUDE:
- Multiple Cooling/Heating Speeds
 - Vent/Exhaust • 10-Position Thermostat • Four-Way Adjustable Air Discharge • Easy Access Filter • Slide-Out Chassis
 - Rigid Panel Window Kit



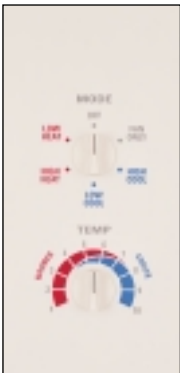
Cooling and Electric Heat -
 Along with comfortable cooling capabilities, our new series also provides supplemental heat during winter months and can even be used as the primary heat source in temperate zones.



Concealed Controls -
 Feature controls are hidden from view to provide a clean, contemporary appearance.



MODEL	BTU	EER	VOLTS	COOLS (Sq. Ft.)	HEATER WATTAGE
AVE22DB	22,000/21,300	8.5/8.5	230/208	1,330-1,450	4.7/3.9 (kw)
AVE18DB	18,000/17,500	9.5/9.5	230/208	1,050-1,150	3.0/2.6 (kw)
AVE15DB	15,000/14,500	9.7/9.7	230/208	850-950	3.0/2.6 (kw)



J-SERIES WINDOW ROOM AIR CONDITIONERS

- ALL MODELS INCLUDE:
- Multiple Cooling/Heating Speeds
 - Vent/Exhaust • Multi-Position Thermostat • Fan Cycle Switch
 - Easy Access Filter • Slide-Out Chassis • EZ Mount Window Kit



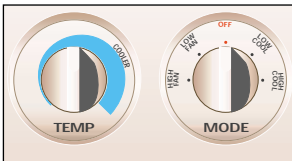
Contemporary Styling -
 The sleek new design blends quietly with most decor.



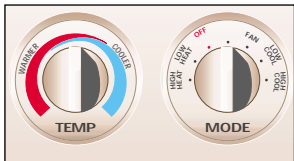
Optional Applications -
 J-Series air conditioners may be installed as a window or through-the-wall unit.



MODEL	BTU	EER	VOLTS	COOLS (Sq. Ft.)	HEATER WATTAGE
HEAT/COOL					
AJES10DSA	9,900/9,700	9.2/9.2	230/208	425-525	3.4/2.8 (kw)
AJES08ASA	8,000	9.2	115	250-350	1.2 (kw)
AJES06LSA	6,000	9.5	115	170-210	1.2 (kw)
HEAT PUMP					
AJHS08ASA	8,000	9.2	115	250-350	1.2 (kw)
COOLING ONLY					
AJCS10AZA	9,900	9.2	115	425-525	
AJCS08AZA	8,000	9.2	115	250-350	
AJCS06LZA	6,000	9.5	115	170-210	



COOLING ONLY



HEAT/COOL

GE DEHUMIDIFIERS



- ALL MODELS INCLUDE:
- Compact & Contemporary Design
 - Automatic Humidistat Control
 - Automatic Shut-Off System with Bucket Full Indicator
 - Easy Roll Casters
 - External Drain Connector
 - Automatic Defrost Control
 - Removable Condensate Container
 - Washable Air Filter

MODEL	PINTS PER DAY
AHG50LB	50
AHG40LB	40
AHG30LA	30



Humidistat - maintain personal comfort level with Adjustable Humidity Control, indicator light glows red when bucket is full and unit automatically shuts off.



Reduce pipe sweating.



Reduce musty odors and mildew.

DEHUMIDIFIERS SPECIFICATIONS (PRELIMINARY)

	GE		
	AHG50LB	AHG40LB	AHG30LB
Features			
Dehumidification (pints/day)	50	40	30
Dry Airflow (CFM)	TBD	TBD	TBD
Color	Cameo White	Cameo White	Cameo White
Auto Shut Off	●	●	●
Automatic Defrost	●	●	●
Water Full Indicator	●	●	●
Fan Speeds	2	2	2
Removable Bucket	●	●	●
Bucket Capacity (pints)	21	21	21
External Drain Connector	●	●	●
Casters	●	●	●
Voltage	115	115	115
Watts	580	580	470
Amps	5.5	5.7	5.8
Circuit Size (Amps)	10	10	10
Plug Type (see page 11)	Parallel	Parallel	Parallel
Case Height (in inches)	20-7/8	20-7/8	20-7/8
Case Width (in inches)	12-5/8	12-5/8	12-5/8
Case Depth (in inches)	17-1/8	17-1/8	17-1/8
Shipping Weight (lbs.)	47	42	51
Net Weight (lbs.)	TBD	TBD	TBD
Warranty* (Entire Unit)	Full 1-Yr.	Full 1-Yr.	Full 1-Yr.
Warranty* (Sealed Ref. System)	Full 5-Yr.	Full 5-Yr.	Full 5-Yr.

*See written warranty for details.

WHAT DEHUMIDIFIER DO YOU NEED

Condition Without Dehumidification — During warm and humid outdoor conditions	Area (in square feet)					
	500	1000	1500	2000	2500	3000
Moderately damp -Space feels damp and has musty odor only in humid weather.	AHG30LA	AHG30LA	AHG30LA	AHG30LA	AHG40LB	AHG40LB
Very damp -Space always feels damp and has musty odor. Damp spots show on walls or floor.	AHG30LA	AHG30LA	AHG30LA	AHG40LB	AHG40LB	AHG40LB
Wet -Space feels and smells wet. Walls or floor sweat, or seepage is present.	AHG30LA	AHG30LA	AHG40LB	AHG40LB	AHG40LB	AHG50LB
Extremely wet -Laundry drying, wet floor, high-load conditions.	AHG30LA	AHG30LA	AHG40LB	AHG40LB	AHG50LB	AHG50LB

Table indicates dehumidification required in Pints per 24 Hours, based on the area of the space to be dehumidified and the conditions that would exist in that space when a dehumidifier is not in use.

Dehumidification variables also include such other factors as climate, laundry equipment, number of family members, number of doors and windows, and degree and intensity of area activity.

Before purchasing any appliance on which the Federal Trade Commission requires an energy label, read important energy cost and efficiency information available from your retailer.

GE has a policy of continuous improvement on its products and reserves the right to change materials and specifications without notice.

PROFILE™ SPECIFICATIONS (PRELIMINARY)

	Profile™ 230 Volt				
	ASM24DB	ASM22DB	ASM18DB	ASM16DB	ASM12DB
Features					
BTUH	23,700/23,100	22,000/21,500	18,000/17,500	15,600/15,200	12,500/12,200
Voltage	230/208	230/208	230/208	230/208	230/208
E.E.R. (BTUH/Watt)	8.8/8.8	8.8/8.8	10.0/10.0	9.7/9.7	10.0/10.0
Amps	12.5/13.4	11.6/12.6	8.5/9.1	7.4/7.9	5.8/6.4
Watts	2,695/2,625	2,500/2,440	1,800/1,750	1,610/1,570	1,250/1,220
Plug Type (see page 11)	Perpendicular	Perpendicular	Tandem	Tandem	Tandem
Energy Saver Feature (speeds)	●	●	●	●	●
Electronic Control	●	●	●	●	●
24-Hour Timer	●	●	●	●	●
Sleep Mode	●	●	●	●	●
Dehumidification (pints/hr.)	7.2	7.0	5.5	3.6	3.4
Circulaire™	●	●	●	●	●
Fan Speeds (Cool/Fan Only)	3/3	3/3	3/3	3/3	3/3
CFM (High Shown) (Indoor)	510	510	510	490	350
Vent/exhaust	●	●	●	●	●
Thermostat	Electronic	Electronic	Electronic	Electronic	Electronic
Filter Type	One Touch Lift-Out	One Touch Lift-Out	One Touch Lift-Out	One Touch Lift-Out	One Touch Lift-Out
Chassis	Slide-Out	Slide-Out	Slide-Out	Slide-Out	Slide-Out
Window Mounting	EZ Mount	EZ Mount	EZ Mount	EZ Mount	EZ Mount
Window Opening Height (min. in inches)	17-3/8	17-3/8	17-3/8	17-3/8	17-3/8
Window Opening Width (in inches) min.	30	30	30	30	30
max.	41	41	41	41	41
Warranty* (Entire Unit)	Full 1-Yr.	Full 1-Yr.	Full 1-Yr.	Full 1-Yr.	Full 1-Yr.
Warranty* (Sealed Ref. System)	Full 5-Yr.	Full 5-Yr.	Full 5-Yr.	Full 5-Yr.	Full 5-Yr.
Case Dimensions (see drawing, page 11)					
Height (in inches) A	16-3/4	16-3/4	16-3/4	16-3/4	16-3/4
Width (in inches) B	26	26	26	26	26
Depth (in inches) C	27-3/16	27-3/16	27-3/16	27-3/16	27-3/16
Depth to louvers (in inches) D	9-1/4	9-1/4	9-1/4	9-1/4	9-1/4
Net Weight (lbs.)	158	144	136	118	110
Approx. Shipping Weight (lbs.)	177	163	155	138	128

*See written warranty for details.

	Profile™ 115 Volt				
	ASM14AB	ASM12AB	ASM10AB	ASM08FB	ASM06LC
Features					
BTUH	14,000	12,500	10,000	8,000	6,000
Voltage	115	115	115	115	115
E.E.R. (BTUH/Watt)	10.0	10.0	10.0	10.0	10.0
Amps	12.0	11.7	9.2	7.4	5.6
Watts	1,400	1,250	1,000	800	600
Plug Type (see page 11)	Parallel	Parallel	Parallel	Parallel	Parallel
Energy Saver Feature (speeds)	●	●	●	●	●
Electronic Control	●	●	●	●	●
24-Hour Timer	●	●	●	●	●
Sleep Mode	●	●	●	●	●
Dehumidification (pints/hr.)	3.5	3.4	3.0	2.5	1.6
Circulaire™	●	●	●	●	●
Fan Speeds (Cool/Fan Only)	3/3	3/3	3/3	3/3	3/3
CFM (High Shown) (Indoor)	430	350	240	240	190
Vent/exhaust	●	●	●	●	●
Thermostat	Electronic	Electronic	Electronic	Electronic	Electronic
Filter Type	One Touch Lift-Out	One Touch Lift-Out	One Touch Lift-Out	One Touch Lift-Out	One Touch Lift-Out
Chassis	Slide-Out	Slide-Out	Slide-Out	Slide-Out	Slide-Out
Window Mounting	EZ Mount	EZ Mount	EZ Mount	EZ Mount	EZ Mount
Window Opening Height (min. in inches)	17-3/8	17-3/8	16-1/8	14-3/4	14-3/4
Window Opening Width (in inches) min.	30	30	27-5/8	25-1/2	25-1/2
max.	41	41	41	37	37
Warranty* (Entire Unit)	Full 1-Yr.	Full 1-Yr.	Full 1-Yr.	Full 1-Yr.	Full 1-Yr.
Warranty* (Sealed Ref. System)	Full 5-Yr.	Full 5-Yr.	Full 5-Yr.	Full 5-Yr.	Full 5-Yr.
Case Dimensions (see drawing, page 11)					
Height (in inches) A	16-3/4	16-3/4	15-1/2	13-19/32	13-19/32
Width (in inches) B	26	26	23-5/8	20-1/2	20-1/2
Depth (in inches) C	27-3/16	27-3/16	21-27/32	17-17/32	17-17/32
Depth to louvers (in inches) D	9-1/4	9-1/4	8-21/32	7-5/32	7-5/32
Net Weight (lbs.)	118	110	92	68	64
Approx. Shipping Weight (lbs.)	138	128	104	76	71

*See written warranty for details.

GE & SLIDE-AIRE SPECIFICATIONS (PRELIMINARY)

	GE 230 Volt			GE 115 Volt	
	ASV24DA	ASV18DB	AGV12DC	ASV14AB	ASV12AB
Features					
BTUH	23,700/23,100	18,000/17,500	12,000/11,500	14,000	12,500
Voltage	230/208	230/208	230/208	115	115
E.E.R. (BTUH/Watt)	8.5/8.5	9.7/9.7	9.8/9.8	10.0	9.8
Amps	12.5/13.4	8.5/9.1	5.5/5.8	12.0	11.7
Watts	2,790/2,715	1,855/1,805	1,220/1,170	1,400	1,275
Plug Type	Perpendicular	Tandem	Tandem	Parallel	Parallel
Energy Saver Feature (speeds)	●				
Dehumidification (pints/hr.)	6.5	5.5	3.5	3.5	3.4
Circulaire™	●				
Fan Speeds (Cool/Fan Only)	3/2	3/2	3/2	3/2	3/2
CFM (High Shown) (Indoor)	510	510	280	430	280
Vent/exhaust	Exhaust	Exhaust	Exhaust	Exhaust	Exhaust
Thermostat	8-Position	8-Position	8-Position	8-Position	8-Position
Filter Type	One Touch Lift-Out	One Touch Lift-Out	Rigid Frame/Slide-Out	One Touch Lift-Out	One Touch Lift-Out
Chassis	Slide-Out	Slide-Out	Slide-Out	Slide-Out	Slide-Out
Window Mounting	EZ Mount	EZ Mount	EZ Mount	EZ Mount	EZ Mount
Window Opening Height (min. in inches)	17-3/8	17-3/8	16	17-3/8	17-3/8
Window Opening Width (in inches) min.	30	30	27	30	30
max.	41	41	39	41	41
Warranty* (Entire Unit)	Full 1-Yr.	Full 1-Yr.	Full 1-Yr.	Full 1-Yr.	Full 1-Yr.
Warranty* (Sealed Ref. System)	Full 5-Yr.	Full 5-Yr.	Full 5-Yr.	Full 5-Yr.	Full 5-Yr.
Case Dimensions (see drawing, page 11)					
Height (in inches) A	16-3/4	16-3/4	15	16-3/4	16-3/4
Width (in inches) B	26	26	23-5/8	26	26
Depth (in inches) C	27-3/16	27-3/16	20-9/32	27-3/16	27-3/16
Depth to louvers (in inches) D	9-1/4	9-1/4	8-5/8	9-1/4	9-1/4
Net Weight (lbs.)	158	136	95	118	110
Approx. Shipping Weight (lbs.)	177	155	101	138	128

	GE 115 Volt					Slide-Aire	
	ASV10AB	ASV08FA	AGV07LB	ASV06LB	ASV05LB	AVX10AD	AVX08FB
Features							
BTUH	10,000	8,000	7,000	6,000	5,000	10,000	7,600
Voltage	115	115	115	115	115	115	115
E.E.R. (BTUH/Watt)	9.8	9.8	9.7	9.8	9.7	9.5	TBD
Amps	9.2	7.4	6.6	5.6	4.8	TBD	TBD
Watts	1,020	815	720	610	515	1,110	TBD
Plug Type	Parallel	Parallel	Parallel	Parallel	Parallel	Parallel	Parallel
Energy Saver Feature (speeds)							
Dehumidification (pints/hr.)	3.0	2.5	1.8	1.6	1.5	3.1	TBD
Circulaire™							
Fan Speeds (Cool/Fan Only)	3/2	3/2	3/2	3/2	3/2	3/2	3/2
CFM (High Shown) (Indoor)	240	240	204	190	140	260	TBD
Vent/exhaust	Exhaust	Exhaust	Exhaust	Exhaust	Exhaust	Exhaust	Exhaust
Thermostat	8-Position	8-Position	8-Position	8-Position	8-Position	10-Position	10-Position
Filter Type	Rigid Frame/Slide-Out	One Touch Lift-Out	Rigid Frame/Slide-Out	One Touch Lift-Out	Rigid Frame/Slide-Out	Foam	Foam
Chassis	Slide-Out	Slide-Out	Slide-Out	Slide-Out	Fixed	Fixed	Fixed
Window Mounting	EZ Mount	EZ Mount	EZ Mount	EZ Mount	EZ Mount	V-Std. Mount	V-Std. Mount
Window Opening Height (min. in inches)	16-1/8	14-3/4	14	14-3/4	12-7/8	21 - 40-1/2	TBD
Window Opening Width (in inches) min.	27-5/8	25-1/2	22	25-1/2	22	15-1/2	TBD
max.	41	37	36	37	36	—	—
Warranty* (Entire Unit)	Full 1-Yr.	Full 1-Yr.	Full 1-Yr.	Full 1-Yr.	Full 1-Yr.	Full 1-Yr.	Full 1-Yr.
Warranty* (Sealed Ref. System)	Full 5-Yr.	Full 5-Yr.	Full 5-Yr.	Full 5-Yr.	Full 5-Yr.	Full 5-Yr.	Full 5-Yr.
Case Dimensions (see drawing, page 12)							
Height (in inches) A	15-1/2	13-19/32	13-7/8	13-19/32	12-3/8	20-1/2	TBD
Width (in inches) B	23-5/8	20-1/2	18-9/16	20-1/2	17-13/16	14-1/2	TBD
Depth (in inches) C	21-27/32	17-17/32	19-5/32	17-17/32	12-7/16	22-9/16	TBD
Depth to louvers (in inches) D	8-21/32	7-5/32	8-1/2	7-5/32	4-31/32	6	TBD
Net Weight (lbs.)	90	67	64	64	48	102	TBD
Approx. Shipping Weight (lbs.)	102	75	70	71	57	106	TBD

Warranties*

ALL MODELS — ONE YEAR/FIVE YEAR FULL WARRANTY*

One year on entire unit. Five years on sealed refrigeration system. In-home service. Parts and labor included.

*See written warranty for details.

QUALITY CONSTRUCTION — Chassis components are engineered for years of dependable service.

Compressor, condenser surfaces and other structural parts of heat/cool and heat pumps are specially treated to resist corrosion. Room-side grilles are crafted of attractive, high-impact polystyrene with directional airflow adjustment.

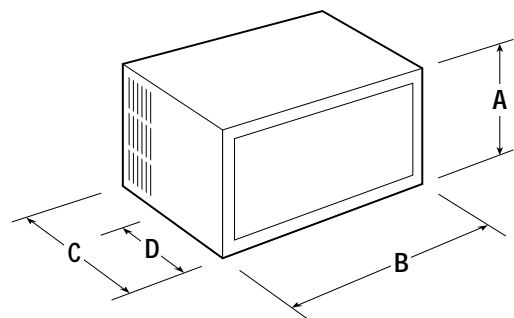
HEAT/COOL & “J” SERIES SPECIFICATIONS (PRELIMINARY)

	Heat/Cool Models			“J” Series						
	AVE22DB**	AVE18DB**	AVE15DB**	AJES10DSA**	AJES08ASA**	AJES06LSA**	AJHS08ASA**	AJCS10AZA	AJCS08AZA	AJCS06LZA
	Heat / Cool	Heat / Cool	Heat / Cool	Heat / Cool	Heat / Cool	Heat / Cool	Heat Pump	Cooling	Cooling	Cooling
Features										
Cooling BTUH-AHAM	22,000/22,300	18,000/17,500	15,000/14,500	9,900/9,700	8,000	6,000	8,000	9,900	8,000	6,000
Heating BTUH-AHAM	16,000/13,400	10,200/8,700	10,200/8,700							
Voltage	230/208	230/208	230/208	230/208	115	115	115	115	115	115
E.E.R. (BTUH/Watt)	8.5/8.5	9.5/9.5	9.7/9.7	9.2/9.2	9.2	9.5	9.2	9.2	9.2	9.5
Rated Cooling Amps - AHAM	7.5/8.1	7.9/8.5	13.0/14.2	4.9/5.3	7.9	5.7	7.9	9.7	7.9	5.7
Cooling Watts	2,680/2,600	1,890/1,840	1,670/1,610	1,075/1,055	870	630	870	1,075	870	630
Rated Heating Amps - AHAM	22.8/20.9	15.0/13.5	15.0/13.5							
Circuit Size, Amps	30	20	20							
Plug Type (see below)	Tandem	Perpendicular	Perpendicular	Perpendicular	Parallel	Parallel	Parallel	Parallel	Parallel	Parallel
Line Cord Plug Recommended Circuit Protection (time delay)				20 Amps	15 Amps	15 Amps	15 Amps	15 Amps	15 Amps	15 Amps
Line Cord Length	55" left	55" left	55" left							
Dehumidification (pints/hr.)	8.2	5.5	4.3	2.6	2.0	1.4	2.0	2.7	2.0	1.4
CFM (High Shown)	500	450	420	250	250	210	230	250	250	210
Air Exchange Exhaust	●	●	●	●	●	●	●	●	●	●
Variable Air Discharge	4-Way	4-Way	4-Way							
Control Door	●	●	●							
Fan Speeds: Cooling/Heating	2/2	2/2	2/2	2/2	2/2	2/2	2/2	2	2	2
Fan Only Position	1	1	1	2	2	2	2	2	2	2
Fan Cycle Switch				●	●	●	●	●	●	●
Thermostat	10-Position	10-Position	10-Position	Variable Setting	Variable Setting	Variable Setting	Variable Setting	Variable Setting	Variable Setting	Variable Setting
Filter Type	Rigid/Slide-Out	Rigid/Slide-Out	Rigid/Slide-Out	Slide-Out	Slide-Out	Slide-Out	Slide-Out	Slide-Out	Slide-Out	Slide-Out
Chassis	Slide-Out	Slide-Out	Slide-Out	Slide-Out	Slide-Out	Slide-Out	Slide-Out	Slide-Out	Slide-Out	Slide-Out
Compressor Type	Recip	Rotary	Rotary	Rotary	Rotary	Rotary	Rotary	Rotary	Rotary	Rotary
Window Mounting	Rigid Panel	Rigid Panel	Rigid Panel	Standard	Standard	Standard	Standard	EZ Mount	EZ Mount	EZ Mount
Window Opening Height (min. in inches)	18-5/8	18-5/8	18-5/8	17	17	17	17	17	17	17
Window Opening Width (in inches) min.	26-3/4	26-3/4	26-3/4	31	31	31	31	31	31	31
max.	40	40	40	42	42	42	42	41	41	41
Case Dimensions (see drawing, page 11)										
Height (in inches) A	17-1/4	17-1/4	17-1/4	15-5/8	15-5/8	15-5/8	15-5/8	15-5/8	15-5/8	15-5/8
Width (in inches) B	26-1/2	26-1/2	26-1/2	26	26	26	26	26	26	26
Depth (in inches) C	23-5/8	23-5/8	23-5/8	16-7/8	16-7/8	16-7/8	16-7/8	16-7/8	16-7/8	16-7/8
Depth to louvers (in inches) D	10-3/4	9-1/8	9-1/8	None	None	None	None	None	None	None
Net Weight (lbs.)	172	123	120	108	96	89	98	82	73	66
Approx. Shipping Weight (lbs.)	185	130	127	117	105	98	107	90	82	75
Warranty* (Entire Unit)	Full 1-Yr.	Full 1-Yr.	Full 1-Yr.	Full 1-Yr.	Full 1-Yr.	Full 1-Yr.	Full 1-Yr.	Full 1-Yr.	Full 1-Yr.	Full 1-Yr.
Warranty* (Sealed Ref. System)	Full 5-Yr.	Full 5-Yr.	Full 5-Yr.	Full 5-Yr.	Full 5-Yr.	Full 5-Yr.	Full 5-Yr.	Full 5-Yr.	Full 5-Yr.	Full 5-Yr.
Heating Capacity - Reverse Cycle										
BTUH - AHAM - H.P.							7,700			
Rated Heating Amps - AHAM							6.8			
COP @ 47°							3.0			
Heating Capacity - Electric										
BTUH - AHAM - 1 1/2 R	16,000/13,400	10,200/8,700	10,200/8,700	11,600/9,480	4,100	4,100	4,100			
Rating Heating Amps - AHAM	22.8/22.9	15.0/13.5	15.0/13.5	15.5/14.0	12.0	12.0	12.0			
Heater Watts	4700/3900	3,000/2,600	3,000/2,600	3,400/2,780	1,200	1,200	1,200			

*See written warranty for details.

**These units are not intended to be the primary source of heat.

WALL CASE DIMENSIONS



GE Appliances

D = Distance from front of case to side louvers (excluding grille).

Note: When installing slide out chassis units in through-the-wall applications, keep louvers free. Do not restrict air flow areas. Fixed chassis units are not suitable for through-the-wall applications.

WALL OUTLETS

All wiring including installation of receptacle must be made in accordance with local electrical codes and regulations. Electrical outlet should be in reach of line cord.

Note: Aluminum building wiring may pose special problems — consult a qualified electrician.



Parallel
115V.
15 Amp



Tandem
230/208V.
15 Amp



Perpendicular
230/208V.
20 Amp



Large Tandem
230/208V.
30 Amp

General Electric Company
Louisville, Kentucky 40225
www.GEAppliances.com



Listed by
Underwriters
Laboratories



Water removal
rating is calculated
by the Association
of Home Appliance
Manufacturers'
standards.



Total capacity and
E.E.R. ratings are
calculated based
on the Association
of Home Appliance
Manufacturers'
standards.

Pub. No. 26-S010P
OTT1569 10/00