



clothes care

frontload laundry pair

a product of
ecomaginationSM



imagination at work



Frontload laundry feature gallery...



Clothes care

HydroHeater™

Increases the water temperature to sanitize and kill more than 99% of many common bacteria found in home laundry.*



Performance

HydroMotion™

wash action

Reversing wash action offers great cleaning performance with gentle wash motion.



Capacity

3.7 cu. ft. king-size capacity**

Makes room for more items, such as a king-size comforter or 22 full-size bath towels.



Savings

Uses as little as 10 gallons of water for a small load and 15 gallons for an average-size load, which saves up to 23 gallons per load, or 61% water.***

Dependability

From the makers of America's most dependable washers!†



WBVH6240FWW/38662

Optional pedestal available

a product of
ecomagination SM

...everything you need.



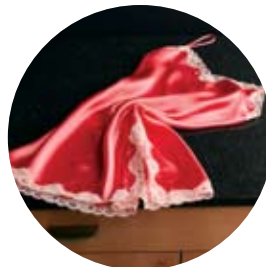
Optional pedestals increase accessibility and provide convenient storage for laundry supplies.

DBVH512EFWW/48662

Clothes care

Sensor Dry Plus

Moisture and temperature settings provide more consistent clothes care.



Performance

Dewrinkle cycle

Tumbles clothes without heat to reduce creasing and wrinkling.



Capacity

7.0 cu. ft.

king-size capacity

Large enough to handle anything the washer sends its way.



Savings

King-size drum

handles even the largest loads, saving you time.

When the laundry piles up, the washer and dryer step up.

*When selecting the washer water temperature "Sanitize" and soil level setting "Heavy" with home hot water heater set at 120°F.

**Washes equivalent amount of clothes as a 3.7 cu. ft. agitator machine, per IEC ratios.

***As compared to a typical washer, WWSE5240.

†Based on an independent national survey of consumers who have purchased a leading brand of washer from 2001-2004.

As an ENERGY STAR® partner, GE has determined that this product meets the ENERGY STAR guidelines for energy efficiency. Before purchasing an ENERGY STAR qualified appliance, read important information about its estimated annual energy consumption or energy efficiency rating that is available from your retailer, ge.com or www.energystar.gov.

The inside story: GE® frontload laundry pair

GE frontload washer

1 Load-sensing adaptive fill

Washer automatically fills with just the right amount of water for the load.

2 QuietBalance™ suspension system

Ensures reliable, quiet operation for flexible installation.

3 Stainless steel wash basket

Professional grade stainless steel wash basket stands up to the toughest loads and is built for years of reliable use.

4 HydroMotion™ wash action

Reversing wash action offers great cleaning performance with gentle wash motion.

5 SudsLogic™ technology

If too many suds are detected it automatically adapts to prevent over-sudsing.



Dependability

From the makers of America's most dependable washers.*

*Based on an independent national survey of consumers who have purchased a leading brand of washer from 2001-2004.



a product of
ecomaginationSM



GE® frontload dryer

1 Dual thermistors

Combined with sensor bars, these help maintain consistent heat and ensure the right level of dryness is reached.

2 Removable lint filter reminder light

Reminds you to clean the upfront filter.

3 QuietPower™ design

Motor and blower isolators, DuraDrum™ interior and sound-dampening materials ensure quiet operation.

4 Deluxe dryer rack

Allows tumble-free drying of items like sweaters.

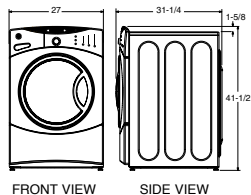
5 DuraDrum™ interior

Handles king-size items and family-size loads with a durable scratch-resistant interior.

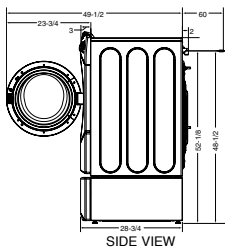


GE® frontload laundry pair

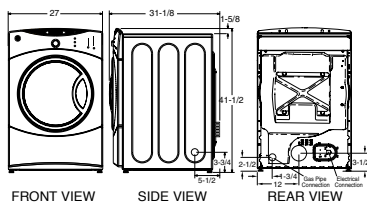
Washer dimensions (in inches)



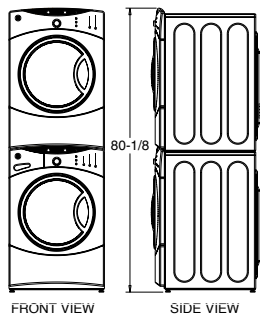
Washer dimensions with door open (in inches)



Dryer dimensions (in inches)



Stacked dimensions (in inches)



	WBVH6240FWW		DBVH512EFWW
Capacity		Capacity	
Capacity	King-size	Capacity	King-size
Cubic feet	3.7	Cubic feet	7.0
Features		Features	
ENERGY STAR®	●	Moisture sensor	Sensor Dry Plus
Wash/rinse temperatures	5 with sanitize	Control type	Rotary-electronic
Water levels	Automatic	Cycle countdown	with LED indicators
HydroMotion™ wash	●	Cycle status lights	●
HydroHeater™	●	Dual thermistors	●
SudsLogic™	●	Heat selections	5
Number of cycles	24	Number of cycles	12
Specialty cycles	Active wear	Cotton cycle	●
Detergent dispenser (liquid/powder)	●	Delicate cycle	●
Bleach dispenser	●	Easy Care cycle	●
Fabric softener dispenser	●	Mixed loads cycle	●
Auxiliary dispenser	●	Optional dryness levels—Damp	●
Control type	Rotary-electronic	Optional dryness levels—Dry	●
End-of-cycle signal	Adjustable	Optional dryness levels—Less dry	●
Wash/Spin speed combinations	4 (1000 RPM spin speed)	Optional dryness levels—More dry	●
Water temperature system	HydroTemp™5	Timed dry—actual minutes on timer	120
Colors	●	Add Time	●
Delicates	●	Dewrinkle	●
Easy Care	●	Damp dry signal	●
Handwash	●	Dryer interior light	●
Whites	●	Dryer rack	Deluxe
Quick Wash	●	End-of-cycle signal	Adjustable
Optional soil levels—Extra Light	●	100% front serviceable	●
Optional soil levels—Heavy Soil	●	Door style	See-thru glass
Optional soil levels—Light Soil	●	Drum interior	DuraDrum
Optional soil levels—Normal Soil	●	Leveling legs	●
2nd rinse	●	Revers-A-Door	●
Adaptive capabilities	Load size	Exhaust options (electric/gas)	4/3
Cycle countdown	with LED indicators	Handle	Dura Grip
Cycle status lights	●	Pedestal available at additional cost	●
Delay start	●	Appearance	
Drain and spin	●	Colors available	White on white, Granite gray
Prewash	●	Weights & Dimensions	
Speed wash	●	Approx. shipping weight (lbs.) E/G	125/130
Stain wash	●	Flexible installation	Undercounter, stacked, side-by-side
Door style	See-thru glass	Granite gray available in December 2006.	
Noise package	QuietPower™		
Leveling legs	●		
Stainless steel wash basket	●		
Handle	Dura Grip		
Pedestal available at additional cost	●		
Appearance			
Colors available	White on white, Granite gray		
Weights & Dimensions			
Approx. shipping weight (lbs.)	225		
Flexible installation	Undercounter, stacked, side-by-side		
Power/Ratings			
Circuit breaker or			
Time delay fuse	15 or 20 amps		
Volts/Hertz	120V; 60Hz		
Granite gray available in December 2006.			

	WBVH6240FWW		DBVH512EFWW
Capacity		Capacity	
Capacity	King-size	Capacity	King-size
Cubic feet	3.7	Cubic feet	7.0
Features		Features	
ENERGY STAR®	●	Moisture sensor	Sensor Dry Plus
Wash/rinse temperatures	5 with sanitize	Control type	Rotary-electronic
Water levels	Automatic	Cycle countdown	with LED indicators
HydroMotion™ wash	●	Cycle status lights	●
HydroHeater™	●	Dual thermistors	●
SudsLogic™	●	Heat selections	5
Number of cycles	24	Number of cycles	12
Specialty cycles	Active wear	Cotton cycle	●
Detergent dispenser (liquid/powder)	●	Delicate cycle	●
Bleach dispenser	●	Easy Care cycle	●
Fabric softener dispenser	●	Mixed loads cycle	●
Auxiliary dispenser	●	Optional dryness levels—Damp	●
Control type	Rotary-electronic	Optional dryness levels—Dry	●
End-of-cycle signal	Adjustable	Optional dryness levels—Less dry	●
Wash/Spin speed combinations	4 (1000 RPM spin speed)	Optional dryness levels—More dry	●
Water temperature system	HydroTemp™5	Timed dry—actual minutes on timer	120
Colors	●	Add Time	●
Delicates	●	Dewrinkle	●
Easy Care	●	Damp dry signal	●
Handwash	●	Dryer interior light	●
Whites	●	Dryer rack	Deluxe
Quick Wash	●	End-of-cycle signal	Adjustable
Optional soil levels—Extra Light	●	100% front serviceable	●
Optional soil levels—Heavy Soil	●	Door style	See-thru glass
Optional soil levels—Light Soil	●	Drum interior	DuraDrum
Optional soil levels—Normal Soil	●	Leveling legs	●
2nd rinse	●	Revers-A-Door	●
Adaptive capabilities	Load size	Exhaust options (electric/gas)	4/3
Cycle countdown	with LED indicators	Handle	Dura Grip
Cycle status lights	●	Pedestal available at additional cost	●
Delay start	●	Appearance	
Drain and spin	●	Colors available	White on white, Granite gray
Prewash	●	Weights & Dimensions	
Speed wash	●	Approx. shipping weight (lbs.) E/G	125/130
Stain wash	●	Flexible installation	Undercounter, stacked, side-by-side
Door style	See-thru glass	Granite gray available in December 2006.	
Noise package	QuietPower™		
Leveling legs	●		
Stainless steel wash basket	●		
Handle	Dura Grip		
Pedestal available at additional cost	●		
Appearance			
Colors available	White on white, Granite gray		
Weights & Dimensions			
Approx. shipping weight (lbs.) E/G	125/130		
Flexible installation	Undercounter, stacked, side-by-side		
Granite gray available in December 2006.			

Pedestal dimensions (in inches)

SBSD227FWW-white

This optional 12" pedestal raises the door opening and height of the washer or dryer. Feet on pedestal allow it to adjust to 13-3/8" height.

