

HOME PRODUCTS AND SERVICES

# Introducing GE Refrigeration 2000



Fresh Ideas in Refrigeration™



*We bring good things to life.*

---

# Only GE offers CustomStyle™ Refrigerators, and they're available in Side-By-Side and Top-Freezer models



A GE CustomStyle side-by-side refrigerator is the perfect solution for today's open-living kitchen designs.



GE's CustomStyle top-freezer refrigerator looks built-in on the outside, has more accessibility than any other free-standing top-freezer.

## This is the kind of innovation you can expect from America's #1 Manufacturer of Refrigerators

GE redesigned these refrigerators from the inside out. The goal was to offer consumers a stylish refrigerator that wouldn't take up as much floor space and at the same time, offer full-capacity storage. We did it! As a result, we are now offering a special category of refrigerators: CustomStyle. This line is now available in a full color selection, as well as with your own custom panel options.

### Side-By-Side Refrigerators



### Top-Freezer Refrigerators



"Because they install nearly flush with the cabinets, these refrigerators save floor space. They don't stick out into the kitchen!"



# GE Profile Performance Series™ CustomStyle™ Stainless Steel Models

GE has kept pace with America's growing appetite for stainless steel appliances with CustomStyle refrigerators in the prestigious GE Profile Performance Series™. With these models, no trim or slide-in panels are required. The result is a finely crafted, sleek, clean CustomStyle appearance. Lately, more and more design-conscious homeowners are discovering that incorporating stainless steel into their kitchen decor doesn't have to be an "all or nothing" decision. GE's Profile Performance stainless steel refrigerators can be "mixed" with either black or white appliances. The effect is stunning. It's amazing how one major appliance can literally upgrade an entire kitchen. As for cabinetry, stainless steel compliments natural wood tones; and it also looks sensational with both traditional and designer colors. Our stainless steel models feature sleek black handles and dispenser.



**GE Profile Performance Series™**  
Side-By-Side Trimless Stainless Steel Model  
**TPS24BPD**  
• Exclusive Water by Culligan™ NSF Certified • Squared doors



**GE Profile Performance Series™**  
Top-Freezer Trimless Stainless Steel Model  
**TNS22PRC**  
• LightTouch! dispenser delivers cubes, crushed ice and chilled water • Rounded doors

# CustomStyle™ Side-By-Side Refrigerators: Choose a trimless or installed trim model



**GE Profile Performance Series™**  
Trimless Model  
**TPX24PPDCC**

## Trimless models:

### Installation made easy, simply slide in.

The trimless CustomStyle units install by simply sliding into—way into—the space between cabinets. Because they align with counters, CustomStyle refrigerators instantly look built-in. And there's nothing to attach or custom build. Available in white, black, almond, stainless steel and bisque.

Trimless models shown on pages 8 and 9.



**GE Profile™**  
Installed Trim Model  
**TPX24BRDWW**  
shown with a custom wood panel and optional collar trim TRMBISWW.

## Installed trim models:

### Another way to customize.

Whether you're building a brand new kitchen or planning for a renovation, GE opens a world of design possibilities. CustomStyle refrigerators accept a variety of door panels: stainless steel, as well as acrylic panels in white, black, almond or bisque.

The choices are simple.

# CustomStyle™ Side-By-Side trim and panel options

## Installed Trim Models

### Optional door panels: another way to customize.

When you choose GE CustomStyle refrigerators with installed trim, the choices of design are practically endless. Order stainless steel panels or acrylic panels in white, black, almond or bisque from GE, or make and install your own custom wood panels to accent the cabinetry in your kitchen.

### Optional collar trim: available for all models listed below.

The optional collar trim is just another way GE lets you integrate our CustomStyle refrigerators into your kitchen decor. Available in white, black, almond, bisque and stainless steel, this trim frames the refrigerator facade, adding to the finished look of a built-in, custom kitchen. Collar trim: TRMBISWW, TRMBISBB, TRMBISAA, TRMBISSS, TRMBISCC.

### Panels available:

Model TPX24BRD is available with white, black, almond, stainless steel or your own custom wood panel options.

Models TPX24BPD, TPX24BID and TPX21BRD are available with white, black, stainless steel or your own custom wood panel options. Model TPX24BPD is available with bisque panel options.

## Dispenser Models



### TPX24BPDBB

Shown with optional black acrylic panels. Water by Culligan™, LightTouch! dispenser.



### TPX24BPDBB

Shown with custom wood panels. Water by Culligan™, LightTouch! dispenser.



### TPX24BRDWW

Shown with optional white acrylic panels. LightTouch! dispenser.



### TPX24BRDAA

Shown with custom wood panels. LightTouch! dispenser.

## Non-Dispenser Models



### TPX21BRDBB

Shown with custom wood panels. LightTouch! dispenser.



### TPX21BRDWW

Shown with optional white acrylic panels. LightTouch! dispenser.



### TPX24BIDBB

Shown with optional black acrylic panels. Non-dispenser.



### TPX24BIDWW

Shown with optional white acrylic panels. Non-dispenser.



# The only CustomStyle™ Top-Freezer Refrigerator: Choose a trimless or installed trim model

This is the first top-freezer refrigerator designed to align with countertops and not stick out or take up valuable floor space, evoking the “premium impression” of a custom built-in kitchen. Best of all, it has full-capacity storage and saves nearly 5" of floor space.



**GE Profile Performance Series™**  
Trimless Model  
**TNX22PRCWW**

## Trimless models: Installation Made Easy, Simply Slide In

The trimless CustomStyle units install by simply sliding into—way into—the space between cabinets. Because they align with counters, CustomStyle refrigerators instantly look built-in. And there's nothing to attach or custom build. Available in white, black, stainless steel and bisque.

Trimless models shown on page 11.



**GE Profile Performance Series™**  
Installed Trim Model  
**TNX22BACBB** shown with custom wood panels.

## Installed Trim Models: another way to customize

Whether you're building a brand new kitchen or planning for a renovation, GE opens a world of design possibilities. CustomStyle refrigerators accept a variety of door panels: acrylic white or black and stainless steel panels. The choices are simple.

# CustomStyle™ Top-Freezer trim and panel options

## Installed Trim Models

### Optional door panels: another way to customize.

When you choose GE CustomStyle refrigerators with installed trim, the choices of design are practically endless. Order stainless steel panels or acrylic panels in white or black from GE, or make and install your own custom wood panels to accent the cabinetry in your kitchen.

### Optional collar trim: available for all models listed below.

The optional collar trim is just another way GE lets you integrate our CustomStyle refrigerators into your kitchen decor. Available in white, black and stainless steel, this trim frames the refrigerator facade, adding to the finished look of a built-in, custom kitchen. Collar trim: TRMBISWW, TRMBISBB, TRMBISSS.

### Panels available:

Models TNX22BRC and TNX22BAC are available with white, black, stainless steel or your own custom wood panel options. Model TNS22BRC is only available with stainless steel panels.

## Dispenser Models



**TNX22BRCWW**  
Shown with optional white acrylic panels. LightTouch! dispenser.



**TNX22BRCBB**  
Shown with optional stainless steel panels. LightTouch! dispenser.



**TNX22BRCBB**  
Shown with custom wood panels. LightTouch! dispenser.



**TNS22BRCBS**  
Shown with installed stainless steel panels. LightTouch! dispenser.

## Non-Dispenser Models



**TNX22BACBB**  
Shown with optional black acrylic panels. Non-dispenser.



**TNX22BACBB**  
Shown with optional stainless steel panels. Non-dispenser.



**TNX22BACBB**  
Shown with custom wood panels. Non-dispenser.

# Side-By-Side CustomStyle™ Models: 24 cu. ft.

**These models include:** Quiet Package II • QuickSpace™ shelf • ClearLook™ adjustable door bins • Gallon door storage • Two slide-out, spill-proof glass shelves • Wire Everwhite slide-out freezer baskets • Freshness Center™ • Beverage rack • Improved fresh food interior lighting

**Note: bold = feature upgrade from previous model**



Improved fresh food interior lighting is now over 25% brighter for improved visibility.



Freshness Center™ offers maximum storage flexibility with adjustable Humidity Controls and Temperature Controls to keep foods fresher longer.



Water by Culligan™ provides cleaner, better tasting water and ice instantly from your LightTouch! dispenser.



ShelfSaver™ provides a new space for odd shapes and sizes.



## GE Profile Performance Series™

Trimless Stainless Steel Dispenser Model

### TPS24PBD

- 23.7 cu. ft. capacity • **Stainless steel model** with trimless rounded doors, black handles and black dispenser • Exclusive Water by Culligan™ NSF Certified • LightTouch! dispenser • Electronic Monitor and Diagnostic System • ShelfSaver™
- Refreshment Center • Premium Deluxe handles



## GE Profile Performance Series™

Trimless Dispenser Models

### TPX24PBD

- 23.7 cu. ft. capacity • Exclusive Water by Culligan™ NSF Certified • LightTouch! dispenser • ShelfSaver™
- **Electronic Monitor and Diagnostic System**
- **Refreshment Center** • Rounded doors • Premium Deluxe handles • New Bisque color available

### TPX24PPD (not shown)

- Exclusive Water by Culligan™ NSF Certified
- LightTouch! dispenser • ShelfSaver™ • Premium Deluxe handles • New Bisque color available

### TPS24PPD (not shown)

- **Stainless steel model** with trimless rounded doors, black handles and black dispenser • New Bisque color available



**YOUR WATER BY CULLIGAN™ REPLACEMENT FILTER (FXRC1)** can be ordered through the GE Answer Center® (1-800-626-2000), Customer Service Parts Center (1-800-626-2002) or through your Authorized GE Dealer.

**WATER FILTER WARRANTY:**  
Limited 30 days parts only warranty. See written warranty for details.

System Tested and Certified by NSF International against ANSI/NSF Standards 42 & 53 for:

| Standard No. 42 Aesthetic Effects: | Standard No. 53 Health Effects: |
|------------------------------------|---------------------------------|
| Chemical Unit                      | Chemical Reduction Unit         |
| Taste and Odor Reduction           | Lead Reduction                  |
| Chlorine Reduction, Class I        | Mechanical Filtration Unit      |
| Mechanical Filtration Unit         | Turbidity Reduction             |
| Particulate Reduction, Class I     | Cyst Reduction                  |

**WATER BY CULLIGAN™ MODELS ONLY**

Not all features available on all models.





### GE Profile Performance Series™

Trimless Stainless Steel Dispenser Model

#### TPS24BPD

- 23.7 cu. ft. capacity • Exclusive Water by Culligan™ NSF Certified • LightTouch! dispenser • ShelfSaver™
- **Factory-installed stainless steel trimless squared doors**
- Full-length handles

Installed Trim Dispenser Model

#### TPX24BPD (not shown)

- **Exclusive Water by Culligan™** NSF Certified • LightTouch! dispenser • ShelfSaver™ • Optional panels available
- Full-length color-matched handles • New Bisque color available



### GE Profile™

Trimless Models

#### TPX24PRD Dispenser Model

- 23.7 cu. ft. capacity • **LightTouch! dispenser**
- **Rounded doors** • Premium Deluxe handles



### GE Profile™

Installed Trim Models

#### TPX24BRD Dispenser Model

- 23.7 cu. ft. capacity • **LightTouch! dispenser** • Optional panels available • Full-length color-matched handles

#### TPX24BID Non-Dispenser Model (not shown)

- Equipped with factory-installed Nice Cubes™ icemaker
- Optional panels available • Full-length color-matched handles

Trimless Model

#### TPS24BID Non-Dispenser Stainless Steel Model (not shown)

- **Factory-installed stainless steel trimless squared doors and handles**

Not all features available on all models.

# Side-By-Side CustomStyle™ Models: 21 cu. ft.

***These models include:*** LightTouch! dispenser • QuickSpace™ shelf • ClearLook™ adjustable door bins • Gallon door storage • Two slide-out, spill-proof glass shelves • Wire Everwhite slide-out freezer baskets • Freshness Center™ • Beverage rack

**Note: bold = feature upgrade from previous model**



QuickSpace™ Shelf slides back for storage of tall containers.



Freshness Center™ offers maximum storage flexibility with adjustable Humidity Controls and Temperature Controls to keep foods fresher longer.



Slide-Out Freezer Baskets allow for quick and easy loading and unloading.



Beverage Rack offers flexible tall bottle storage.



## GE Profile™

Installed Trim Dispenser Model

**TPX21BRD**

• 21.0 cu. ft. capacity • **Optional panels available** • Full-length color-matched handles



## GE Profile™

Trimless Dispenser Model

**TPX21PRD**

• 21.0 cu. ft. capacity • Premium Deluxe handles

# Top-Freezer CustomStyle™ Models: 22 cu. ft.

**These models include:** Beverage Rack • Adjustable spill-proof glass shelves • Adjustable humidity vegetable/fruit crispers • Adjustable gallon door bins • Dual up-front temperature control (back-lit) • QuickSpace™ shelf • Slide-out, spill-proof crisper cover • Quick Store™ bin • Adjustable temperature meat pan • Adjustable dairy compartment

**Note: bold = feature upgrade from previous model**



Slide-Out, Spill-Proof Crisper Cover pulls out for easy access and quick cleanup.



QuickSpace™ Shelf slides back to store tall items.



ClearLook™ Adjustable Door Bins store gallon containers with ease.



LightTouch! Dispenser delivers cubes, crushed ice and chilled water.



## GE Profile Performance Series™

Trimless Models

### TNX22PRC Dispenser Model

• 21.7 cu. ft. capacity • **LightTouch!** dispenser delivers cubes, crushed ice and chilled water • Rounded doors • Color-matched Premium Deluxe handles • New Bisque color available

### TNS22PRC Dispenser Stainless Steel Model (not shown)

• **LightTouch!** dispenser delivers cubes, crushed ice and chilled water • **Stainless steel trimless rounded doors** • Premium Deluxe black handles

### TNX22PAC Non-Dispenser Model (not shown)

• 21.9 cu. ft. capacity • Equipped for optional automatic icemaker • New Bisque color available



## GE Profile Performance Series™

Installed Trim Models

### TNS22BRC Dispenser Stainless Steel Model

• 21.7 cu. ft. capacity • **Factory-installed stainless steel panels, trim and full-length handles**

### TNX22BRC Dispenser Model (not shown)

• **LightTouch!** dispenser delivers cubes, crushed ice and chilled water

### TNX22BAC Non-Dispenser Model (not shown)

• 21.9 cu. ft. capacity • Equipped for optional automatic icemaker • Rounded doors • Factory-installed trim with optional panels and full-length color-matched handles



## GE's design is ahead of the curve



New contoured doors are gently rounded and have a smooth, high-gloss finish for a high-fashion look. From this fresh new contoured door, to the fresh new ideas on the inside, GE's year 2000 side-by-side refrigerators are designed and loaded with features that keep America's number one brand ahead of the curve.



A high-gloss finish accentuates the smooth texture for a sophisticated look and feel.

# Contoured Door Side-By-Side Models: 26 cu. ft.

***These models include:*** Quiet Package II • QuickSpace™ shelf • ClearLook™ adjustable door bins • Gallon door storage • Two slide-out, spill-proof glass shelves • Wire Everwhite slide-out freezer baskets • Freshness Center™ • ShelfSaver™ • Improved fresh food interior lighting

**Note: bold = feature upgrade from previous model**



The full-length SoftTouch grip has a comfortable, luxurious feel.



ShelfSaver™ provides a new space for odd shapes and sizes.



Improved fresh food interior lighting is now over 25% brighter for improved visibility.



Freshness Center™ offers maximum storage flexibility with adjustable Humidity Controls and Temperature Controls to keep foods fresher longer.



## GE Profile Performance™

Dispenser Model

### TFB26SPDBS

- 25.6 cu. ft. capacity • **Stainless steel** model with contoured doors, black handles and black dispenser • Exclusive Water by Culligan™ NSF Certified • LightTouch! dispenser



## GE Profile Performance™

Dispenser Model

### TFB26PPDBB

- 25.6 cu. ft. capacity • Contoured doors with high-gloss finish • Exclusive Water by Culligan™ NSF Certified • LightTouch! dispenser • Also available in White on white and Bisque



# Side-By-Side “C” Builder Series Models: 26 to 22 cu. ft.

**These models include:** Quiet Package I • LightTouch! dispenser • Four door bins, two adjustable with gallon storage • Adjustable humidity vegetable/fruit crisper • Adjustable temperature meat pan • Two adjustable spill-proof glass shelves • QuickSpace™ shelf • Snack pan • Premium Deluxe handles • Improved fresh food interior lighting

**Note: bold = feature upgrade from previous model**



Quiet Package I reduces noise.



Water by Culligan™ provides cleaner, better-tasting water and ice instantly from your LightTouch! dispenser.



QuickSpace™ Shelf slides back for storage of tall containers.



Spill-Proof Shelves help contain spills for ease of cleaning.



**GE**  
Builder Exclusive Model  
**TFX26CPD**  
• 25.6 cu. ft. capacity  
• **Exclusive Water by Culligan™**  
NSF Certified



**GE**  
Builder Exclusive Model  
**TFX26CRD**  
• **25.6 cu. ft. capacity**



**GE**  
Builder Exclusive Model  
**TFX22CRD**  
• **21.9 cu. ft. capacity**



## Bottom-Freezer Models: 22 to 18 cu. ft.

**These models include:** Adjustable humidity vegetable/fruit crispers • Snack pan • Adjustable spill-proof shelves • Wire Everwhite sliding freezer basket • Four modular door bins • Equipped for optional automatic icemaker

**Note: bold = feature upgrade from previous model**



Modular Fresh Food Gallon Door Storage provides maximum storage flexibility.



Spill-Proof Shelves help contain spills for ease of cleaning.



ShelfSaver™ provides a new space for odd shapes and sizes.



Clear Crispers provide easy storage for fruits and vegetables.



**GE Profile™**  
Bottom-Freezer Model  
**TCX22PAC**  
• **21.7 cu. ft. capacity**  
• **ShelfSaver™**



**GE Profile™**  
Bottom-Freezer Model  
**TCS18PAD**  
• **17.6 cu. ft. capacity** • **New Slide'n Store™**  
**freezer drawer** • **2 sliding freezer baskets**  
**TCD18PAD** (not shown)  
• **Color-matched handles**



**GE Profile™**  
Bottom-Freezer Models  
**TCX18PAD**  
• **17.6 cu. ft. capacity**  
• **ShelfSaver™**  
**TCX18IAD** (not shown)  
• **17.6 cu. ft. capacity**

Not all features available on all models.

## Top-Freezer Models: “C” Series 21 to 18 cu. ft.

***These models include:*** Quiet Package I • Equipped with factory-installed Nice Cubes™ icemaker • Adjustable spill-proof glass shelves • Snack pan • Adjustable humidity vegetable/fruit crispers • Premium Deluxe handles

**Note: bold = feature upgrade from previous model**



Quiet Package I reduces noise.



Nice Cubes™ Icemaker provides rounded shaped ice for better fit into a glass.



**GE Builder Exclusive Model  
TBX21CIB**  
• **20.6 cu. ft. capacity** • **3 enclosed door shelves**, **2 with gallon storage**



**GE Builder Exclusive Model  
TBX18CIB**  
• **18.2 cu. ft. capacity** • **2 enclosed door shelves** with gallon storage

## Top-Freezer “I” Series Models: 21 to 18 cu. ft.

***These models include:*** Snack pan • Clear vegetable/fruit crispers • Adj. glass shelves • Deluxe handles • Tall vegetable/fruit crispers

**Note: bold = feature upgrade from previous model**



Fixed Gallon Door Storage offers gallon and tall bottle storage.



Snack Pan conveniently stores rewrapped meats, cheeses and snacks.

Not all features available on all models.



**GE Non-Icemaker Model  
TBX21IAB**  
• **20.6 cu. ft. capacity** • Equipped for optional automatic icemaker • **2 split, 1 full-width glass cabinet shelves** • **3 door shelves**, **2 with gallon storage** • Tall vegetable/fruit crispers • Full-width freezer shelf

**TBX21IIB Icemaker Model (not shown)**  
• Equipped with factory-installed Nice Cubes™ icemaker



**GE Non-Icemaker Model  
TBX18IAD**  
• **18.2 cu. ft. capacity** • Equipped for optional automatic icemaker • **2 split, 1 full-width glass cabinet shelves** • **2 door shelves** with gallon storage • Full-width freezer shelf

**TBX18IID Icemaker Model (not shown)**  
• Equipped with factory-installed Nice Cubes™ icemaker



# Top-Freezer “S” Series Models: 18 to 10 cu. ft.

**These models include:** Wire Everwhite shelves • Classic white vegetable/fruit crispers • Tall bottle storage • Deluxe handles

**Note:** bold = feature upgrade from previous model



Wire Everwhite Shelves minimize shuffling and restacking of food.



Classic White Crispers provide easy storage for vegetables and fruits.



Snack Pan conveniently stores rewrapped meats, cheeses and snacks.



Tall Bottle Storage provides flexible storage for oversized items.



**GE**

Top-Freezer Models

**TBX18SAB**

• **18.2 cu. ft. capacity** • **Snack pan** • Equipped for optional automatic icemaker • **Fixed gallon door storage** • **2 split, 1 full-width fresh food shelves**

**TBX18SIB** (not shown)

• **Equipped with factory-installed Nice Cubes™ icemaker**



**GE**

Top-Freezer Models

**TBX14SYB**

• **14.4 cu. ft. capacity** • Equipped for optional automatic icemaker • **Recessed handles**

**TBX14SIB** (not shown)

• **Equipped with factory-installed Nice Cubes™ icemaker** • **Color-matched handles**

**TBX14SAB** (not shown)

• Equipped for optional automatic icemaker • **Color-matched handles**

**TBX12SAX** (not shown)

• **12.1 cu. ft. capacity**

**TBX10SNB** (not shown)

• **9.8 cu. ft. capacity**



**GE**

Top-Freezer Models

**TBX16SIB**

• **16.4 cu. ft. capacity** • **Equipped with factory-installed Nice Cubes™ icemaker**

**TBX16SAB** (not shown)

• Equipped for optional automatic icemaker

**TBX16SYB** (not shown)

• Equipped for optional automatic icemaker • **Recessed handles**

**TBX16SSB** (not shown)

• Equipped for optional automatic icemaker • **Only 64" high**

## Top-Freezer “R” Model: 16 cu. ft.



**GE**

Model Type

**TBX16RIC**

• **15.6 cu. ft. capacity** • Equipped with factory-installed Nice Cubes™ icemaker • **2 full-width freezer shelves** • **Only 64" high**



# CustomStyle™ No-Frost Side-By-Side Refrigerators

|  | GE Profile Performance Series™     |                                    |                                    |                                    |                                    | GE Profile™                        |                                    |                  |                            |                                    |
|--|------------------------------------|------------------------------------|------------------------------------|------------------------------------|------------------------------------|------------------------------------|------------------------------------|------------------|----------------------------|------------------------------------|
|  | TPS24PBD<br>TPS24PPD               | TPX24PBD                           | TPX24PPD                           | TPS24BPD                           | TPX24BPD                           | TPX24PRD                           | TPX24BRD                           | TPX24BID         | TPS24BID                   | TPX21PRD<br>TPX21BRD               |
| Stainless steel model                      | ●                                  |                                    |                                    | ●                                  |                                    |                                    |                                    |                  | ●                          |                                    |
| <b>Capacity</b>                            |                                    |                                    |                                    |                                    |                                    |                                    |                                    |                  |                            |                                    |
| Total (cu. ft.)                            | 23.7                               | 23.7                               | 23.7                               | 23.7                               | 23.7                               | 23.7                               | 23.7                               | 23.5             | 23.5                       | 21.0                               |
| Fresh food (cu. ft.)                       | 14.48                              | 14.48                              | 14.48                              | 14.48                              | 14.48                              | 14.48                              | 14.48                              | 14.48            | 14.48                      | 13.10                              |
| Freezer (cu. ft.)                          | 9.25                               | 9.25                               | 9.25                               | 9.25                               | 9.25                               | 9.25                               | 9.25                               | 9.05             | 9.05                       | 7.87                               |
| Shelf area (sq. ft.)                       | 24.1                               | 24.1                               | 24.1                               | 24.1                               | 24.1                               | 23.2                               | 23.2                               | 24.0             | 24.0                       | 21.8                               |
| <b>Features</b>                            |                                    |                                    |                                    |                                    |                                    |                                    |                                    |                  |                            |                                    |
| Refreshment Center                         | ● / -                              | ●                                  |                                    |                                    |                                    |                                    |                                    |                  |                            |                                    |
| Electronic Monitor System                  | ● / -                              | ●                                  |                                    |                                    |                                    |                                    |                                    |                  |                            |                                    |
| Exclusive Water by Culligan™               | ●                                  | ●                                  | ●                                  | ●                                  | ●                                  |                                    |                                    |                  |                            |                                    |
|  | Cubes, Crushed Ice & Chilled Water | Cubes, Crushed Ice & Chilled Water | Cubes, Crushed Ice & Chilled Water | Cubes, Crushed Ice & Chilled Water | Cubes, Crushed Ice & Chilled Water | Cubes, Crushed Ice & Chilled Water | Cubes, Crushed Ice & Chilled Water |                  |                            | Cubes, Crushed Ice & Chilled Water |
| LightTouch™ dispenser                      |                                    |                                    |                                    |                                    |                                    |                                    |                                    |                  |                            |                                    |
| Auto. factory-installed icemaker & ice bin | ●                                  | ●                                  | ●                                  | ●                                  | ●                                  | ●                                  | ●                                  |                  | ●                          | ●                                  |
| Cabinet shelves                            | 3 Glass                            | 3 Glass                            | 3 Glass                            | 3 Glass                            | 3 Glass                            | 3 Glass                            | 3 Glass                            | 3 Glass          | 3 Glass                    | 3 Glass                            |
| (adjustable)                               | 3                                  | 3                                  | 3                                  | 3                                  | 3                                  | 3                                  | 3                                  | 3                | 3                          | 3                                  |
| (slide-out, spill-proof)                   | 2 Glass                            | 2 Glass                            | 2 Glass                            | 2 Glass                            | 2 Glass                            | 2 Glass                            | 2 Glass                            | 2 Glass          | 2 Glass                    | 2 Glass                            |
| ShelfSaver™                                | ●                                  | ●                                  | ●                                  | ●                                  | ●                                  |                                    |                                    |                  |                            |                                    |
| QuickSpace™ shelf                          | ●                                  | ●                                  | ●                                  | ●                                  | ●                                  | ●                                  | ●                                  | ●                | ●                          | ●                                  |
| Freshness Center™ (w/spill-proof cover)    |                                    |                                    |                                    |                                    |                                    |                                    |                                    |                  |                            |                                    |
| Snack pan (top)                            | Adj. Humidity                      | Adj. Humidity                      | Adj. Humidity                      | Adj. Humidity                      | Adj. Humidity                      | Adj. Humidity                      | Adj. Humidity                      | Adj. Humidity    | Adj. Humidity              | Adj. Humidity                      |
| Vegetable/fruit crisper (middle)           | Adj. Humidity                      | Adj. Humidity                      | Adj. Humidity                      | Adj. Humidity                      | Adj. Humidity                      | Adj. Humidity                      | Adj. Humidity                      | Adj. Humidity    | Adj. Humidity              | Adj. Humidity                      |
| Meat pan (lower)                           | Adj. Temp.                         | Adj. Temp.                         | Adj. Temp.                         | Adj. Temp.                         | Adj. Temp.                         | Adj. Temp.                         | Adj. Temp.                         | Adj. Temp.       | Adj. Temp.                 | Adj. Temp.                         |
| ClearLook™ modular door bins               | 4 (2 Adj. Gal.)                    | 4 (2 Adj. Gal.)                    | 4 (2 Adj. Gal.)                    | 4 (2 Adj. Gal.)                    | 4 (2 Adj. Gal.)                    | 4 (2 Adj. Gal.)                    | 4 (2 Adj. Gal.)                    | 4 (2 Adj. Gal.)  | 4 (2 Adj. Gal.)            | 4 (2 Adj. Gal.)                    |
| Dairy compartment w/glass butter dish      | ●                                  | ●                                  | ●                                  | ●                                  | ●                                  | ●                                  | ●                                  | ●                | ●                          | ●                                  |
| Beverage rack                              | ●                                  | ●                                  | ●                                  | ●                                  | ●                                  | ●                                  | ●                                  | ●                | ●                          | ●                                  |
| Egg bin                                    | ●                                  | ●                                  | ●                                  | ●                                  | ●                                  | ●                                  | ●                                  | ●                | ●                          | ●                                  |
| Interior light(s)                          | 2                                  | 2                                  | 2                                  | 2                                  | 2                                  | 2                                  | 2                                  | 2                | 2                          | 1                                  |
| Freezer slide-out basket(s)                | 1 Wire Everwhite                   | 1 Wire Everwhite                   | 1 Wire Everwhite                   | 1 Wire Everwhite                   | 1 Wire Everwhite                   | 1 Wire Everwhite                   | 1 Wire Everwhite                   | 1 Wire Everwhite | 1 Wire Everwhite           | 3 Wire Everwhite                   |
| Freezer storage bin(s) (Wire Everwhite)    | 1 Sliding                          | 1 Sliding                          | 1 Sliding                          | 1 Sliding                          | 1 Sliding                          | 1 Sliding                          | 1 Sliding                          | 1 Sliding        | 1 Sliding                  | 1 Sliding                          |
| Canilevered freezer shelf                  | 3 (2 Adj.)                         | 3 (2 Adj.)                         | 3 (2 Adj.)                         | 3 (2 Adj.)                         | 3 (2 Adj.)                         | 3 (2 Adj.)                         | 3 (2 Adj.)                         | 3 (2 Adj.)       | 3 (2 Adj.)                 |                                    |
| Freezer door shelves                       | 4 (2 Adj.)                         | 4 (2 Adj.)                         | 4 (2 Adj.)                         | 4 (2 Adj.)                         | 4 (2 Adj.)                         | 4 (2 Adj.)                         | 4 (2 Adj.)                         | 5 (2 Adj.)       | 5 (2 Adj.)                 | 4                                  |
| Adjustable rollers                         | ●                                  | ●                                  | ●                                  | ●                                  | ●                                  | ●                                  | ●                                  | ●                | ●                          | ●                                  |
| <b>Economical/Quiet</b>                    |                                    |                                    |                                    |                                    |                                    |                                    |                                    |                  |                            |                                    |
| Quiet Package                              | II                                 | II                                 | II                                 | II                                 | II                                 | II                                 | II                                 | II               | II                         | I                                  |
| Auto Energy Saver (condenser loop)         | ●                                  | ●                                  | ●                                  | ●                                  | ●                                  | ●                                  | ●                                  | ●                | ●                          | ●                                  |
| Insulation (cabinet and door)              | Foam                               | Foam                               | Foam                               | Foam                               | Foam                               | Foam                               | Foam                               | Foam             | Foam                       | Foam                               |
| Cabinet liner—Baked Enamel-on-Steel        | ●                                  | ●                                  | ●                                  | ●                                  | ●                                  | ●                                  | ●                                  | ●                | ●                          | ●                                  |
| Door liner—ABS                             | ●                                  | ●                                  | ●                                  | ●                                  | ●                                  | ●                                  | ●                                  | ●                | ●                          | ●                                  |
| <b>Appearance</b>                          |                                    |                                    |                                    |                                    |                                    |                                    |                                    |                  |                            |                                    |
| Color(s) available*                        | BS                                 | WW, CC, AA, BB                     | WW, CC, AA, BB                     | BS                                 | WW, CC, BB                         | WW, AA, BB                         | WW, AA, BB                         | WW, BB           | BS                         | WW, AA, BB<br>WW, BB               |
| Built-in configuration                     | Trimless                           | Trimless                           | Trimless                           | Trimless                           | Installed Trim                     | Trimless                           | Installed Trim                     | Installed Trim   | Trimless                   | Trimless<br>Installed Trim         |
| Premium Deluxe door handle(s)              | Black                              | Color-Matched                      | Color-Matched                      | N/A                                | N/A                                | Color-Matched                      | N/A                                | N/A              | N/A                        | Color-Matched                      |
| Full-length handles                        | N/A                                | N/A                                | N/A                                | Stainless Steel Appearance         | Color-Matched                      | N/A                                | Color-Matched                      | Color-Matched    | Stainless Steel Appearance | Color-Matched                      |
| Exterior design                            | Rounded Doors                      | Rounded Doors                      | Rounded Doors                      | Squared Doors                      | Squared Doors                      | Rounded Doors                      | Squared Doors                      | Squared Doors    | Squared Doors              | Rounded Doors<br>Squared Doors     |
| Textured steel                             |                                    | ●                                  | ●                                  |                                    | ●                                  | ●                                  | ●                                  | ●                |                            | ●                                  |
| <b>Weights &amp; Dimensions</b>            |                                    |                                    |                                    |                                    |                                    |                                    |                                    |                  |                            |                                    |
| Height to top of hinge (in.)               | 69-3/4                             | 69-3/4                             | 69-3/4                             | 69-3/4                             | 69-3/4                             | 69-3/4                             | 69-3/4                             | 69-3/4           | 69-3/4                     | 69-3/4                             |
| Height to top of case (in.)                | 68-3/4                             | 68-3/4                             | 68-3/4                             | 68-3/4                             | 68-3/4                             | 68-3/4                             | 68-3/4                             | 68-3/4           | 68-3/4                     | 68-3/4                             |
| Case depth without door (in.)              | 23-7/8                             | 23-7/8                             | 23-7/8                             | 23-7/8                             | 23-7/8                             | 23-7/8                             | 23-7/8                             | 23-7/8           | 23-7/8                     | 23-3/4                             |
| Case depth less door handle (in.)          | 26-3/8                             | 26-3/8                             | 26-3/8                             | 26-3/8                             | 26-3/8                             | 26-3/8                             | 26-3/8                             | 26-3/8           | 26-3/8                     | 26                                 |
| Case depth with door handle (in.)          | 28-7/16                            | 28-7/16                            | 28-7/16                            | 28-7/16                            | 28-7/16                            | 28-7/16                            | 28-7/16                            | 28-7/16          | 28-7/16                    | 28-1/2<br>27-5/8                   |
| Depth w/fresh food door open 90° (in.)     | 45-5/8                             | 45-5/8                             | 45-5/8                             | 45-5/8                             | 45-5/8                             | 45-5/8                             | 45-5/8                             | 45-5/8           | 45-5/8                     | 45-5/8                             |
| Width (in.)                                | 35-3/4                             | 35-3/4                             | 35-3/4                             | 35-3/4                             | 35-3/4                             | 35-3/4                             | 35-3/4                             | 35-3/4           | 35-3/4                     | 35-3/4                             |
| Width w/door open 90° w/door handle (in.)  | 40-7/8                             | 40-7/8                             | 40-7/8                             | 40-7/8                             | 40-7/8                             | 40-7/8                             | 40-7/8                             | 40-7/8           | 40-7/8                     | 40                                 |
| Air clearances                             |                                    |                                    |                                    |                                    |                                    |                                    |                                    |                  |                            |                                    |
| Each side (in.)                            | 1/8**                              | 1/8**                              | 1/8**                              | 1/8**                              | 1/8**                              | 1/8**                              | 1/8**                              | 1/8**            | 1/8**                      | 1/8**                              |
| Top (in.)                                  | 1                                  | 1                                  | 1                                  | 1                                  | 1                                  | 1                                  | 1                                  | 1                | 1                          | 1                                  |
| Back (in.)                                 | 1/2                                | 1/2                                | 1/2                                | 1/2                                | 1/2                                | 1/2                                | 1/2                                | 1/2              | 1/2                        | 1/2                                |
| Approx. shipping weight (lbs.)             | 376                                | 350                                | 350                                | 376                                | 350                                | 350                                | 350                                | 350              | 350                        | 336                                |
| <b>Accessories</b>                         |                                    |                                    |                                    |                                    |                                    |                                    |                                    |                  |                            |                                    |
| Factory trim kit attached                  | N/A                                | N/A                                | N/A                                | N/A                                | ●                                  | N/A                                | ●                                  | ●                | N/A                        | N/A                                |
| Black acrylic panels (optional)            | N/A                                | N/A                                | N/A                                | N/A                                | TKP24RBBB                          | N/A                                | TKP24RBBB                          | TKP24IBBB        | N/A                        | N/A/TKP21LS                        |
| White acrylic panels (optional)            | N/A                                | N/A                                | N/A                                | N/A                                | TKP24RBWW                          | N/A                                | TKP24RBWW                          | TKP24IBWW        | N/A                        | N/A/TKP21LS                        |
| Bisque acrylic panels (optional)           | N/A                                | N/A                                | N/A                                | N/A                                | TKP24RBCC                          | N/A                                | TKP24RBCC                          | N/A              | N/A                        | N/A                                |
| Almond acrylic panels (optional)           | N/A                                | N/A                                | N/A                                | N/A                                | N/A                                | N/A                                | TKP24RBAA                          | N/A              | N/A                        | N/A                                |
| Stainless steel panels (optional)          | N/A                                | N/A                                | N/A                                | N/A                                | TKP24RBSS                          | N/A                                | TKP24RBSS                          | TKP24IBSS        | N/A                        | N/A/TKP21RXSS                      |
| Black collar trim (optional)               | N/A                                | N/A                                | N/A                                | N/A                                | TRMBISBB                           | N/A                                | TRMBISBB                           | TRMBISBB         | N/A                        | N/A/TRMBISBB                       |
| White collar trim (optional)               | N/A                                | N/A                                | N/A                                | N/A                                | TRMBISWW                           | N/A                                | TRMBISWW                           | TRMBISWW         | N/A                        | N/A/TRMBISWW                       |
| Bisque collar trim (optional)              | N/A                                | N/A                                | N/A                                | N/A                                | TRMBISCC                           | N/A                                | TRMBISCC                           | N/A              | N/A                        | N/A                                |
| Almond collar trim (optional)              | N/A                                | N/A                                | N/A                                | N/A                                | N/A                                | N/A                                | TRMBISAA                           | N/A              | N/A                        | N/A                                |
| Stainless steel collar trim (optional)     | N/A                                | N/A                                | N/A                                | TRMBISSS                           | N/A                                | N/A                                | N/A                                | N/A              | TRMBISSS                   | N/A                                |

\*Color(s) available: BS = Black case with stainless steel doors, WW = White on white, CC = Bisque, AA = Almond on almond, BB = Black on black.

\*\*If installed against a wall, allow clearance of 11-1/4" on freezer side to remove bin. Clearance required to remove fresh food full size pan without disassembling is 13-1/2".

ALL MODELS AVAILABLE IN U.S. AND CANADA. NOTE: When connecting a water supply line to a GE refrigerator, a GE Water Supply Kit is recommended.

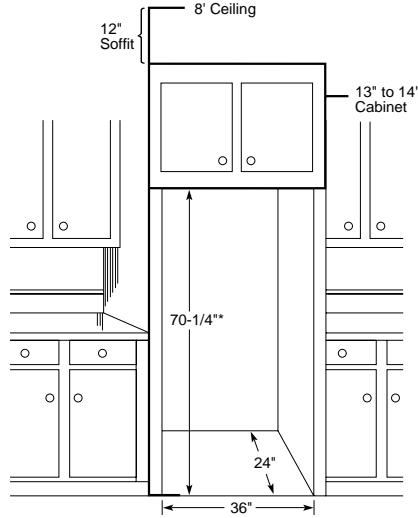
# GE Profile Performance™ and GE Profile™ Side-by-Side CustomStyle™ Installation Information and Specifications

## Rough-In Dimensions

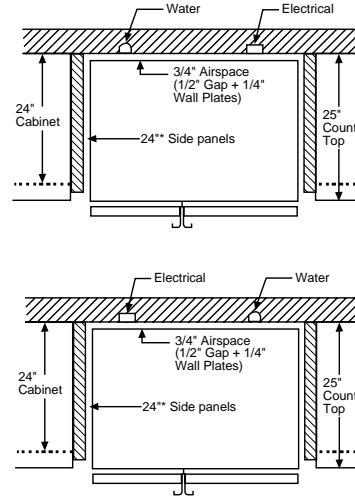
### Standard, New Construction and Replacement Installation

#### Installation Tips to Maximize the Built-In Look

- All wall/floor molding should be removed prior to installation.
- Water recess on rear wall recommended to prevent water line damage. 48" minimum length 1/4" diameter water line tubing recommended.
- When possible, recess both copper water line and electrical outlet. (See local codes)
- Front and rear leveling legs are adjustable for the built-in look. (See owner's manual)
- If optional collar trim kit is to be used or anticipated, see collar trim installation on next page for different rough-in dimensions.



\*The rough-in dimension of 70-1/4" is minimum and is measured from the finished floor to top of opening (or the underside of the overhead cabinets). For Models with Trim Kit: If frameless style cabinets are planned for above the refrigerator, you may need to consider adding a maximum of 1/4" (70-1/2") to height of opening to allow additional clearance between cabinet doors and top of refrigerator trim when cabinet doors are in open position.



For 21 cu. ft. models only.

\*24" depth applies to the refrigerator opening, not the actual cabinet depth.

## Door Panel Dimensions

Order your own custom wood panels to match cabinetry or other decor.

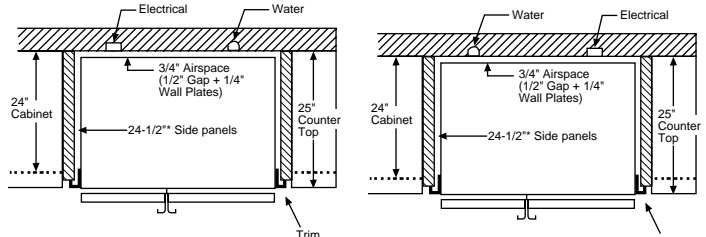
|            | Fresh Food Panels        | Freezer Panel With Dispenser          | Freezer Panel Without Dispenser | Weight Limits*                            |
|------------|--------------------------|---------------------------------------|---------------------------------|---|
| 21 cu. ft. | G-65-3/16"<br>H-20-1/16" | C-18-3/4"<br>D-14-5/16"<br>F-14-5/16" |                                 | Fresh Food = 38 lbs.<br>Freezer = 28 lbs. |
| 24 cu. ft. | G-67-1/8"<br>H-19-5/16"  | C-18-13/16"<br>D-14-1/2"<br>F-14-1/2" | A-67-1/8"<br>B-14-1/2"          | Fresh Food = 35 lbs.<br>Freezer = 25 lbs. |

Panels up to 1/4" thick will fit door frame with no special preparation. Add filler behind material thinner than 1/4" for proper fit.

Note: Panels up to 3/4" will require special routing area around handles. Dimensions may vary depending on depth of panel.

\*Total weight of panels (i.e., both freezer panels)

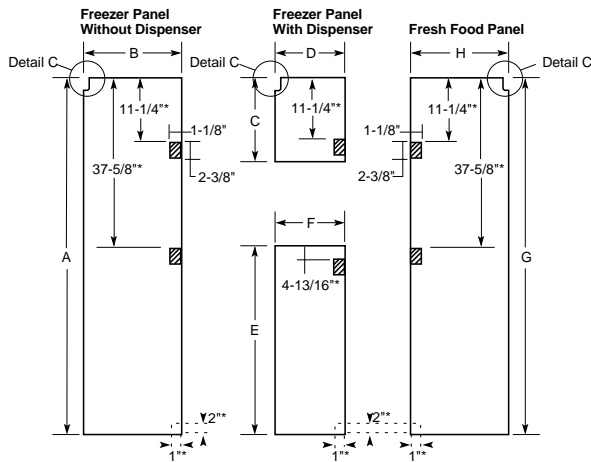
## Installation of Water and Electrical Outlets



For 21 cu. ft. models only.

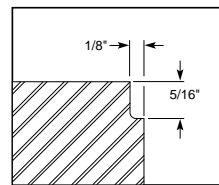
For 24 cu. ft. models only.

\*24-1/2" depth applies only to the refrigerator opening, not the actual cabinet depth.

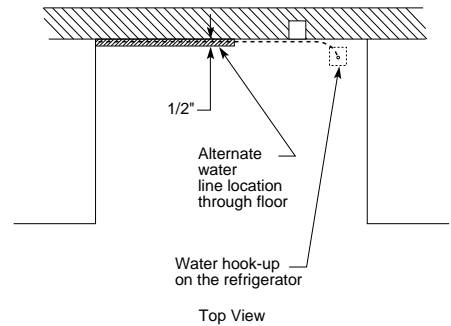
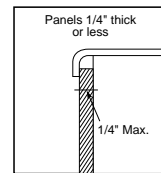


\*For 24 cu. ft. models only

## Detail C

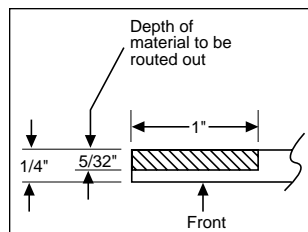


(Fresh Food panel shown)  
Notch required at top corner as noted.  
For 21 and 24 cu. ft. models



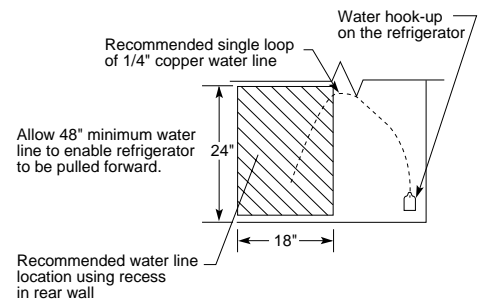
For 21 cu. ft. models only.

All other dotted lines indicate areas that must be routed out about 5/32" (4 mm) on the back side of panels 1/4" (6 mm) thick or more. For panels less than 1/4" (6 mm) thick, these areas can be cut out of the filler panel.



**IMPORTANT:** Before finalizing specifications for your GE Profile Performance™ and GE Profile™ CustomStyle™ Refrigerator, please NOTE:

- A minimum of 36" is required for refrigerator installation
- Be sure to allow for 1/2" or 3/4" side panels in addition to the 36" minimum



Rear Wall View

## Side-By-Side Refrigerators

|   | GE Profile Performance Series™     | GE "C" Series                      |                                    |                                    |
|---|------------------------------------|------------------------------------|------------------------------------|------------------------------------|
|   | TFB26PPD<br>TFB26SPD               | TFX26CPD                           | TFX26CRD                           | TFX22CRD                           |
| Stainless steel model                             | —/●                                |                                    |                                    |                                    |
| <b>Capacity</b>                                   |                                    |                                    |                                    |                                    |
| Total (cu. ft.)                                   | 25.6                               | 25.6                               | 25.6                               | 21.9                               |
| Fresh food (cu. ft.)                              | 16.0                               | 16.0                               | 16.0                               | 14.95                              |
| Freezer (cu. ft.)                                 | 9.59                               | 9.59                               | 9.59                               | 6.90                               |
| Shelf area (sq. ft.)                              | 25.3                               | 24.7                               | 24.7                               | 23.0                               |
| <b>Features</b>                                   |                                    |                                    |                                    |                                    |
| Exclusive Water by Culligan™                      | ●                                  | ●                                  |                                    |                                    |
| LightTouch! dispenser                             | Cubes, Crushed Ice & Chilled Water | Cubes, Crushed Ice & Chilled Water | Cubes, Crushed Ice & Chilled Water | Cubes, Crushed Ice & Chilled Water |
| Automatic icemaker and ice bin                    | ●                                  | ●                                  | ●                                  | ●                                  |
| Cabinet shelves                                   | 3 Glass                            | 3 Glass                            | 3 Glass                            | 3 Glass                            |
| (adjustable)                                      | 3                                  | 3                                  | 3                                  | 3                                  |
| (slide-out)                                       | ●                                  |                                    |                                    |                                    |
| (spill-proof)                                     | ●                                  | ●                                  | ●                                  | ●                                  |
| QuickSpace™ shelf                                 | ●                                  | ●                                  | ●                                  | ●                                  |
| ShelfSaver™                                       | ●                                  |                                    |                                    |                                    |
| Freshness Center™ (w/spill-proof cover)           |                                    |                                    |                                    |                                    |
| Snack pan (top)                                   | Adj. Humid.                        |                                    |                                    |                                    |
| Vegetable/fruit crispers (middle)                 | Adj. Humid.                        |                                    |                                    |                                    |
| Meat pan (lower)                                  | Adj. Temp.                         |                                    |                                    |                                    |
| Sealed snack pan                                  |                                    | ●                                  | ●                                  | ●                                  |
| Vegetable/fruit crisper (upper)                   |                                    | 1 Adj. Humid.                      | 1 Adj. Humid.                      | 1 Adj. Humid.                      |
| Meat pan (lower)                                  |                                    | 1 Adj. Temp.                       | 1 Adj. Temp.                       | 1 Adj. Temp.                       |
| ClearLook™ door bins                              | ●                                  |                                    |                                    |                                    |
| Modular door bins                                 | 4 (2 adj. w/gal. storage)          | 4 (2 adj. w/gal. storage)          | 4 (2 adj. w/gal. storage)          | 4 (2 adj. w/gal. storage)          |
| Snuggler™ Clip(s)                                 |                                    | 2                                  | 2                                  | 2                                  |
| Dairy compartment w/butter dish                   | ●                                  | ●                                  | ●                                  | ●                                  |
| Beverage rack                                     | ●                                  |                                    |                                    |                                    |
| Egg bin (clear)                                   | ●                                  |                                    |                                    |                                    |
| Utility bin (clear)                               |                                    | ●                                  | ●                                  | ●                                  |
| Interior light(s)                                 | 2                                  | 2                                  | 2                                  | 2                                  |
| Freezer cabinet shelves (wire Everwhite)          |                                    | 3 Adj.                             | 3 Adj.                             | 3 Adj.                             |
| Freezer slide-out baskets (wire Everwhite)        | 3                                  |                                    |                                    |                                    |
| Freezer storage bin                               | 1 wire Everwhite Sliding           | 1 Sliding                          | 1 Sliding                          | 1 Sliding                          |
| Freezer door shelves                              | 5                                  | 5                                  | 5                                  | 5                                  |
| Adjustable rollers                                | ●                                  | ●                                  | ●                                  | ●                                  |
| <b>Economical/Quiet</b>                           |                                    |                                    |                                    |                                    |
| Quiet Package                                     | II                                 | I                                  | I                                  | I                                  |
| Automatic Energy Saver (condenser loop)           | ●                                  | ●                                  | ●                                  | ●                                  |
| Cabinet insulation                                | Foam                               | Foam                               | Foam                               | Foam                               |
| Cabinet liner—Baked enamel-on-steel               | ●                                  | ●                                  | ●                                  | ●                                  |
| Door liner—ABS                                    | ●                                  | ●                                  | ●                                  | ●                                  |
| <b>Appearance</b>                                 |                                    |                                    |                                    |                                    |
| Color(s) available*                               | WW, CC, BB<br>BS<br>CM<br>Black    | WW, CC, AA, BB                     | WW, CC, AA, BB                     | WW, CC, AA, BB                     |
| Full-length door handles                          |                                    |                                    |                                    |                                    |
| Premium deluxe door handle(s)                     | N/A                                | CM                                 | CM                                 | CM                                 |
| Exterior design                                   | Contoured Door                     |                                    |                                    |                                    |
| Textured steel doors and case                     | ●                                  | ●                                  | ●                                  | ●                                  |
| <b>Weights &amp; Dimensions</b>                   |                                    |                                    |                                    |                                    |
| Height to top of hinge (in.) A                    | 69-3/4                             | 69-3/4                             | 69-3/4                             | 67-5/8                             |
| Height to top of case (in.) B                     | 68-3/4                             | 68-3/4                             | 68-3/4                             | 66-5/8                             |
| Case depth without door (in.) C                   | 28                                 | 28                                 | 28                                 | 28                                 |
| Case depth less door handle (in.) D               | 31-1/4                             | 30-1/4                             | 30-1/4                             | 30-1/4                             |
| Case depth with door handle (in.) E               | 33-1/2                             | 32-1/2                             | 32-1/2                             | 32-1/2                             |
| Depth with door open 90° (in.) F                  | 49-3/8                             | 49-3/4                             | 49-3/4                             | 49-3/8                             |
| Width (in.) G                                     | 35-3/4                             | 35-3/4                             | 35-3/4                             | 33-1/2                             |
| Width with door open 90° less door handle (in.) H | 37-1/8                             | 36-1/8                             | 36-1/8                             | 34-1/4                             |
| Air clearances Each side (in.)                    | 3/4†                               | 3/4†                               | 3/4†                               | 3/4†                               |
| Top (in.)   | 1                                  | 1                                  | 1                                  | 1                                  |
| Back (in.)  | 1                                  | 1                                  | 1                                  | 1                                  |
| Approx. shipping weight (lbs.)                    | 421/361                            | 335                                | 335                                | 310                                |
| <b>Accessories</b>                                |                                    |                                    |                                    |                                    |
| Aluminum trim kit                                 | N/A                                | TK26RBAL                           | TK26RBAL                           | N/A                                |
| Black panels                                      | N/A                                | TKP26RB                            | TKP26RB                            | N/A                                |
| Trim and black acrylic panels                     | N/A                                | TFP26RB                            | TFP26RB                            | TFP22RB                            |
| Stainless steel panels                            | N/A                                | N/A                                | N/A                                | N/A                                |

\*Color(s) available: BS = Black case with stainless steel doors; WW = White on white, CC = Bisque, AA = Almond on almond, BB = Black on black, CM = Color-Matched indicates color of handle(s) matches exterior.

†If installed against a wall, allow clearance of 11-1/4" on freezer side to remove ice bin. To remove fresh food pans, remove door bins. Clearances required to remove fresh food full-size pan without disassembling is 10-1/2" on 22 cu. ft.; 13-5/8" on 26 cu. ft.

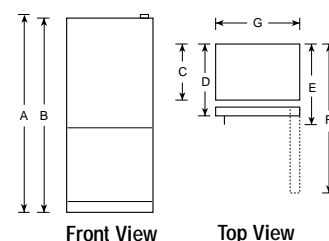
## Bottom-Freezer Refrigerators

|                                       | GE Profile™                                   |                            |                           | GE                        |
|---------------------------------------|---|----------------------------|---------------------------|---------------------------|
|                                       | TCS18PAD<br>TCD18PAD                          | TCX22PAC                   | TCX18PAD                  | TCX18IAD                  |
| <b>Capacity</b>                       |   |                            |                           |                           |
| Total (cu. ft.)                       | 17.6  | 21.7                       | 17.6                      | 17.6                      |
| Fresh food (cu. ft.)                  | 12.9  | 15.20                      | 12.90                     | 12.90                     |
| Freezer (cu. ft.)                     | 4.7   | 6.51                       | 4.7                       | 4.7                       |
| Shelf area (sq. ft.)                  | 22.7  | 30.11                      | 23.0                      | 23.0                      |
| <b>Features</b>                       |   |                            |                           |                           |
| Automatic icemaker                    | Opt. (IM3)                                    | Opt. (UK-3S)               | Opt. (IM3)                | Opt. (IM3)                |
| Ice 'N Easy trays                     | 2   | 2                          | 2                         | 2                         |
| Ice tray shelf                        |   | ●                          | ●                         | ●                         |
| Ice storage bin                       | Bucket  | Bucket                     | Bucket                    | ●                         |
| Cabinet shelves                       | 4 Glass                                       | 4 Glass                    | 4 Glass                   | 4 Glass                   |
| (adjustable)                          | 4 Split                                       | 4 Split                    | 4 Split                   | 4 Split                   |
| (spill-proof)                         | 4   | 4                          | 4                         |                           |
| (slide-out)                           | 2   |                            | 2                         |                           |
| Snack pan                             | ●   | ●                          | ●                         | ●                         |
| Vegetable/fruit crisper(s)            | 2 Adj. Humid.                                 | 2 Adj. Humid.              | 2 Adj. Humid.             | 2 Adj. Humid.             |
| Utility egg bin                       | ●   | ●                          | ●                         |                           |
| Modular door bins                     | 4 Adj.  | 4 Adj.                     | 4 Adj.                    | 4 Adj.                    |
| Enclosed door shelf (full-width)      | 1 Fixed w/ gallon storage                     | 1 Fixed w/ gallon storage  | 1 Fixed w/ gallon storage | 1 Fixed w/ gallon storage |
| ShelfSaver™                           | ●   | ●                          | ●                         |                           |
| Dairy compartments                    | 1 Clear w/ butter dish                        | 1 Clear w/ butter dish     | 1 Clear w/ butter dish    | 1 Clear w/ butter dish    |
| Interior light                        | ●   | ●                          | ●                         | ●                         |
| Slide 'n Store™ Freezer Drawer        | ●   |                            |                           |                           |
| Wire Everwhite freezer storage basket | 2 Sliding                                     | 1 Full-Width Sliding       | 1 Full-Width Sliding      | 1 Full-Width Sliding      |
| Freezer compartment shelf             |   | 1 Full-Width               | 1 Full-Width              | 1 Full-Width              |
| Freezer door shelves                  |   | 2 Full-Width, 2 Half-Width | 2 Full-Width              | 2 Full-Width              |
| Freezer interior light                | ●   | ●                          | ●                         |                           |
| Upfront freezer control               |   | ●                          |                           |                           |
| <b>Economical/Quiet</b>               |   |                            |                           |                           |
| Cabinet/door insulation               | Foam  | Foam                       | Foam                      | Foam                      |
| Cabinet liner                         | Steel   | ABS                        | Steel                     | Steel                     |
| Door liner                            | ABS   | HIPS                       | ABS                       | ABS                       |
| <b>Appearance</b>                     |   |                            |                           |                           |
| Color(s) available*                   | BS/WW, AA, BB<br>Tubular SS<br>CM Full-Length | WW, AA, BB                 | WW, AA, BB                | WW, AA                    |
| Door handle(s)                        | Color-Matched                                 | Color-Matched              | CM Full-Length            | CM Full-Length            |
| Textured steel doors and case         | —/●   | ●                          | ●                         | ●                         |
| Door stops                            | ●   | ●                          | ●                         | ●                         |
| Reversible doors                      | —/●   | ●                          | ●                         |                           |
| Adjustable front rollers              | ●   | ●                          | ●                         | ●                         |
| Coil-free back                        | ●   | ●                          | ●                         | ●                         |
| <b>Weights &amp; Dimensions</b>       |   |                            |                           |                           |
| Height to top of hinge (in.) A        | 66-1/4  | 68-3/8                     | 66-1/4                    | 66-1/4                    |
| Height to top of case (in.) B         | 65-3/4  | 67-5/8                     | 65-3/4                    | 65-3/4                    |
| Case depth without door (in.) C       | 26-1/4  | 28-3/4                     | 26-1/4                    | 26-1/4                    |
| Case depth less door handle (in.) D   | 28  | 32-3/4                     | 28                        | 28                        |
| Case depth with door handle (in.) E   | 29-1/8  | 35-1/8                     | 29-1/8                    | 29-1/8                    |
| Depth with door open 90° (in.) F      | 57-1/4  | 64-1/2                     | 57-1/4                    | 57-1/4                    |
| Width (in.) G                         | 31  | 32-5/8                     | 31                        | 31                        |
| Side clearance for 90° door open      | 1-3/4   | 2-1/8                      | 1-3/4                     | 1-3/4                     |
| Air clearances Each side (in.)        | 0   | 0                          | 0                         | 0                         |
| Top (in.)                             | 1   | 1                          | 1                         | 1                         |
| Back (in.)                            | 0**   | 1                          | 0**                       | 0**                       |
| Approx. shipping weight (lbs.)        | 267/257                                       | 329                        | 247                       | 247                       |

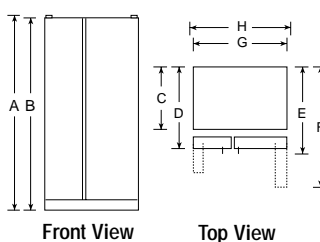
\*Color(s) available: WW = White on white, AA = Almond on almond, BB = Black on black, BS = Black with Stainless Steel door

\*\*Metal cover on back, when touching wall, gives 1-1/4" clearance.

### Bottom-Freezer Refrigerators



### Side-By-Side Refrigerators





# GE Profile Performance™ Top-Freezer CustomStyle™ Installation Information and Specifications

## Rough-In Dimensions

## Rough-In Dimensions

## Collar Trim Installation

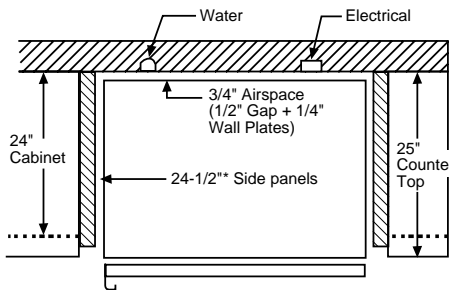
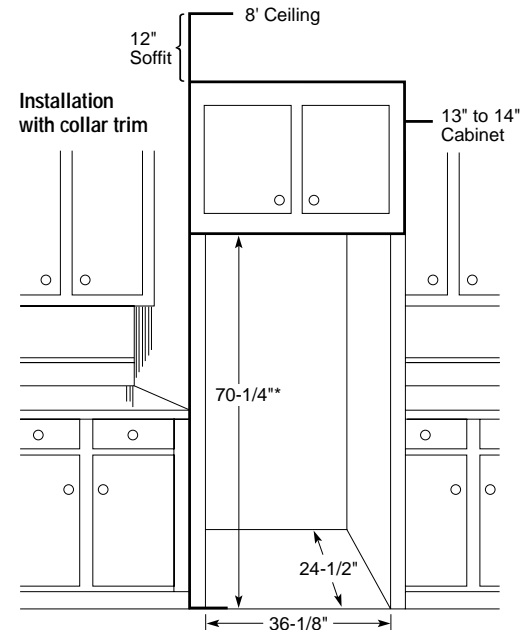
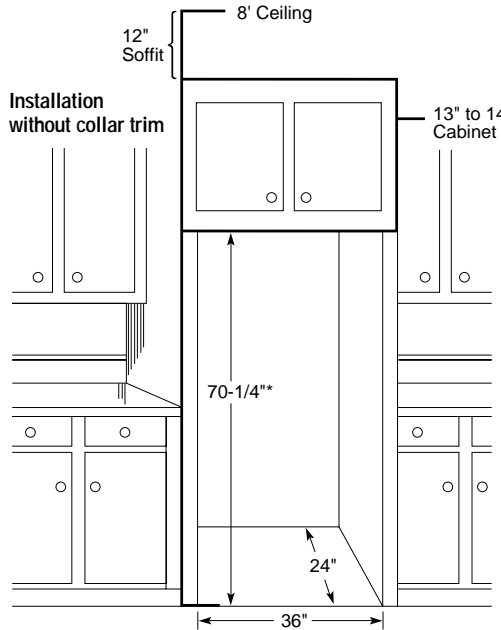
### Standard, New Construction and Replacement Installation

#### Installation Tips to Maximize the Built-In Look

- All wall/floor molding should be removed prior to installation.
- Water recess on rear wall recommended to prevent water line damage. 48" minimum length 1/4" diameter water line tubing recommended.
- When possible, recess both copper water line and electrical outlet. (See local codes)
- Front and rear leveling legs are adjustable for the built-in look. (See owner's manual)

### Collar Trim Installation

An enclosure is **required** to match up to the trim, see Typical Installation. To obtain the most integrated look, the cabinet or soffit above the refrigerator should extend out to the same depth as the side panels. The refrigerator opening must have minimum dimensions of 70-1/4" high x 36-1/8" wide x 24-1/2" deep as shown at right. If there is an overhead cabinet, allow 1" for cabinet door clearance with the top trim piece so the cabinet doors can be opened without hitting the top trim. If 1/2" side panels are used, then side trim and panel will be even. If 3/4" side panels are used, then some of the side panel will extend beyond the trim and must be finished.



\*The rough-in dimension of 70-1/4" is minimum and is measured from the finished floor to top of opening (or the underside of the overhead cabinets). For Models with Trim Kit: If frameless style cabinets are planned for above the refrigerator, you may need to consider adding a maximum of 1/4" (70-1/2") to height of opening to allow additional clearance between cabinet doors and top of refrigerator trim when cabinet doors are in open position.

For 22 cu. ft. models only.

\*22" depth applies to the refrigerator opening, not the actual cabinet depth.

## Door Panel Dimensions

Order your own custom wood panels to match cabinetry or other decor.

| Fresh Food Panels | Freezer Panel Without Dispenser | Freezer Panel With Dispenser |
|-------------------|---------------------------------|------------------------------|
| B-42-1/4"         | A-24-1/16"                      | D-24-1/16"                   |
| C-35-3/4"         | C-35-3/4"                       | C-35-3/4"                    |

22 cu. ft. Panels up to 1/4" thick will fit door frame with no special preparation. Add filler behind material thinner than 1/4" for proper fit.

Note: Panels up to 3/4" will require special routing area around handles. Dimensions may vary depending on depth of panel.

### Handle Side Clearance

–At least 2" (51 mm) on the handle side for fingertip clearances.

### Top and Bottom Clearance

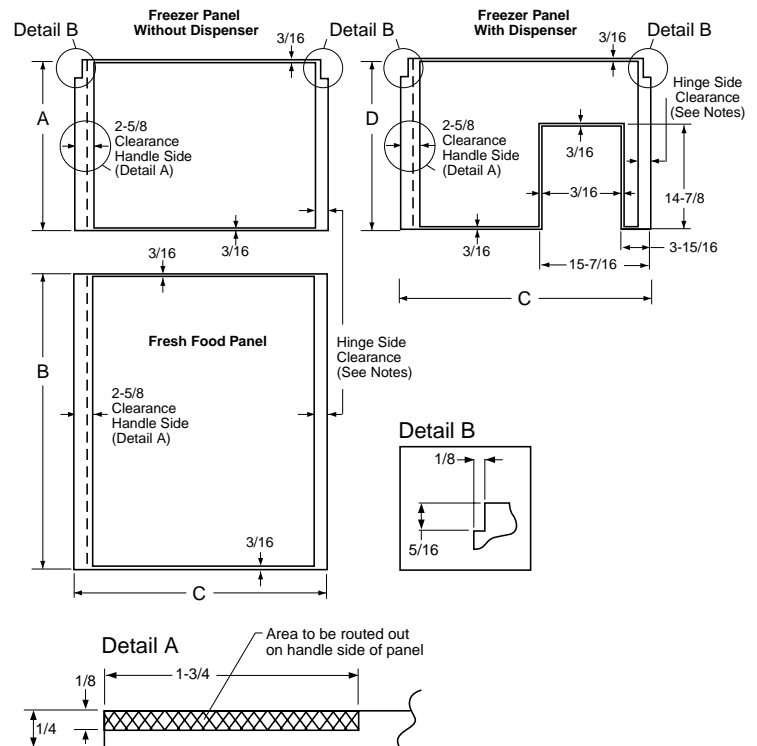
–At least 3/16" (4.75 mm) at the top and bottom edges to allow for trim flange.

### Hinge Side Clearance

- A 3/4" (19 mm) thick door panel may strike the adjacent countertops when the door is fully opened. Therefore, the hinge side clearance to raised panel will vary according to the installation situation.
- Allow 1-3/4" (44 mm) clearance when installation does not include side panels.
- The installation of 3/4" (19 mm) thick side panels requires less clearance because the space between the door and adjacent countertop is wider.
- To avoid door contact to countertop consider:
  - Miter the corner of the adjacent countertops 45°, or
  - Pull the refrigerator forward enough to avoid contact.

### Stability Leg

- The top-freezer refrigerator is the first cabinet-depth top-freezer. This means depth is more shallow than conventional models and the width is larger. The stability leg gives the unit extra support.



**IMPORTANT:** Before finalizing specifications for your GE Profile Performance™ CustomStyle™ Refrigerator, please NOTE:

- A minimum of 36" is required for refrigerator installation
- Be sure to allow for 1/2" or 3/4" side panels in addition to the 36" minimum

# CustomStyle™ No-Frost Top-Freezer Refrigerators

|   | GE Profile Performance Series™     |   |   |                                    |                                    |
|---|------------------------------------|---|---|------------------------------------|------------------------------------|
|   | TNX22PRC                           | TNS22PRC<br>TNX22PAC  | TNS22BRC                                      | TNX22BRC                           | TNX22BAC                           |
| Stainless steel model                         |                                    | ● / -   | ●   |                                    |                                    |
| <b>Capacity</b>                               |                                    |   |   |                                    |                                    |
| Total (cu. ft.)                               | 21.7                               | 21.7/21.9   | 21.7  | 21.7                               | 21.9                               |
| Fresh food (cu. ft.)                          | 15.4                               | 15.4  | 15.4  | 15.4                               | 15.4                               |
| Freezer (cu. ft.)                             | 6.3                                | 6.3/6.5   | 6.3   | 6.3                                | 6.5                                |
| Shelf area (sq. ft.)                          | 20.0                               | 20.0/22.4   | 20.0  | 20.0                               | 22.4                               |
| <b>Features</b>                               |                                    |   |   |                                    |                                    |
| LightTouch! dispenser                         | Cubes, Crushed Ice & Chilled Water | Cubes, Crushed Ice & Chilled Water<br>-<br>Factory-Installed  | Cubes, Crushed Ice & Chilled Water            | Cubes, Crushed Ice & Chilled Water |                                    |
| Automatic icemaker & ice bin                  | Factory-Installed                  | Factory-Installed<br>Opt. (IM3)                               | Factory-Installed                             | Factory-Installed                  | Opt. (IM3)                         |
| Ice 'N Easy trays                             |                                    | - /4  |   |                                    | 4                                  |
| Ice storage bin                               |                                    | - /●  |   |                                    | ●                                  |
| Cabinet shelves                               | 4 Glass                            | 4 Glass   | 4 Glass                                       | 4 Glass                            | 4 Glass                            |
| (adjustable)                                  | 4 Split                            | 4 Split   | 4 Split                                       | 4 Split                            | 4 Split                            |
| (slide-out)                                   | 3                                  | 3   | 3   | 3                                  | 3                                  |
| (spill-proof)                                 | 4                                  | 4   | 4   | 4                                  | 4                                  |
| QuickSpace™ shelf                             | ●                                  | ●   | ●   | ●                                  | ●                                  |
| Quick Store™ bin                              | ●                                  | ●   | ●   | ●                                  | ●                                  |
| ShelfSaver™                                   | ●                                  | ●   | ●   | ●                                  | ●                                  |
| Beverage rack                                 | ●                                  | ●   | ●   | ●                                  | ●                                  |
| Window vegetable/fruit crisper                | 2 Adj. Humidity                    | 2 Adj. Humidity   | 2 Adj. Humidity                               | 2 Adj. Humidity                    | 2 Adj. Humidity                    |
| Slide-out, spill-proof crisper cover          | ●                                  | ●   | ●   | ●                                  | ●                                  |
| Meat pan                                      | Adj. Temperature                   | Adj. Temperature  | Adj. Temperature                              | Adj. Temperature                   | Adj. Temperature                   |
| ClearLook™ Modular door bins w/gallon storage | 3 Adj.                             | 3 Adj.  | 3 Adj.  | 3 Adj.                             | 3 Adj.                             |
| Door shelf                                    | 1 Fixed                            | 1 Fixed   | 1 Fixed                                       | 1 Fixed                            | 1 Fixed                            |
| Slide-out, slide-over pans                    | ●                                  | ●   | ●   | ●                                  | ●                                  |
| Snuggler™ Clip(s)                             | 2                                  | 2   | 2   | 2                                  | 2                                  |
| Modular dairy compartment                     | 1                                  | 1   | 1   | 1                                  | 1                                  |
| Glass butter dish                             | ●                                  | ●   | ●   | ●                                  | ●                                  |
| Dual upfront temperature control (backlit)    | ●                                  | ●   | ●   | ●                                  | ●                                  |
| Fresh food upfront lighting                   | ●                                  | ●   | ●   | ●                                  | ●                                  |
| Freezer interior light                        | ●                                  | ●   | ●   | ●                                  | ●                                  |
| Freezer compartment shelf(s) (wire Everwhite) | 1 Adj.                             | 1 Adj.<br>2 Adj.  | 1 Adj.  | 1 Adj.                             | 2 Adj.                             |
| Freezer door bins                             | 2 Fixed (1 w/gal. storage)         | 2 Fixed (1 w/gal. stor)<br>1 F/W, 2 modular clear gallon bins | 2 Fixed (1 w/gal. storage)                    | 2 Fixed (1 w/gal. storage)         | 1 F/W, 2 modular clear gallon bins |
| Adjustable rollers                            | ●                                  | ●   | ●   | ●                                  | ●                                  |
| <b>Economical/Quiet</b>                       |                                    |   |   |                                    |                                    |
| Cabinet/door insulation                       | Foam                               | Foam  | Foam  | Foam                               | Foam                               |
| Cabinet/door liner                            | ABS                                | ABS   | ABS   | ABS                                | ABS                                |
| <b>Appearance</b>                             |                                    |   |   |                                    |                                    |
| Color(s) available*                           | WW, CC, BB                         | BS<br>WW, CC, BB  | BS  | WW, BB                             | WW, BB                             |
| Door handle(s)                                | Color-Matched Premium Deluxe       | Black Premium Deluxe Color-Matched Premium Deluxe             | Stainless Steel Full-Length                   | Color-Matched Full-Length          | Full-Length                        |
| Textured steel doors & case                   | ●                                  | - /●  | ●   | ●                                  | ●                                  |
| Built-in configuration                        | Trimless                           | Trimless  | Fact.-Installed Trim & Stainless Steel Panels | Installed Trim                     | Installed Trim                     |
| Exterior design                               | Rounded Doors                      | Rounded Doors   |   |                                    |                                    |
| Choose right or left door opening             | ●                                  | ●   | ●   | ●                                  | ●                                  |
| Reversible doors                              |                                    | - /●  |   |                                    |                                    |
| <b>Weights &amp; Dimensions</b>               |                                    |   |   |                                    |                                    |
| Height to top of hinge (in.) A                | 69-7/8                             | 69-7/8  | 69-15/16                                      | 69-15/16                           | 69-15/16                           |
| Height to top of case (in.) B                 | 68-3/4                             | 68-3/4  | 70-7/16                                       | 70-7/16                            | 70-7/16                            |
| Case depth without door (in.) C               | 23-3/4                             | 23-3/4  | 23-3/4  | 23-3/4                             | 23-3/4                             |
| Case depth less door handle (in.) D           | 26-3/4                             | 26-3/4  | 26-3/4  | 26-3/4                             | 26-3/4                             |
| Case depth with door handle (in.) E           | 28-5/8                             | 28-3/8  | 28-5/8  | 28-3/8                             | 28-3/8                             |
| Depth w/fresh food door open 90° (in.) F      | 61                                 | 61  | 61  | 61                                 | 61                                 |
| Width (in.) G                                 | 35-3/4                             | 35-3/4  | 35-3/4  | 35-3/4                             | 35-3/4                             |
| Width w/door open 90° w/door handle (in.) H   | 36-1/4                             | 36-1/4  | 36-3/8  | 36-5/8                             | 36-5/8                             |
| Air clearances                                | Each side (in.)                    | 1/8   | 1/8   | 1/8                                | 1/8                                |
| Top (in.)                                     | 1                                  | 1   | 1   | 1                                  | 1                                  |
| Back (in.)                                    | 1/2                                | 1/2   | 1/2   | 1/2                                | 1/2                                |
| Approx. shipping weight (lbs.)                | 325                                | 325/300   | 325   | 325                                | 300                                |
| <b>Accessories</b>                            |                                    |   |   |                                    |                                    |
| Black acrylic panels (optional)               | N/A                                | N/A   | N/A   | TKP22RCBB                          | TKP22ACBB                          |
| White acrylic panels (optional)               | N/A                                | N/A   | N/A   | TKP22RCWW                          | TKP22ACWW                          |
| Stainless steel panels (optional)             | N/A                                | N/A   | N/A   | TKP22RCSS                          | TKP22ACSS                          |
| Black collar trim (optional)                  | N/A                                | N/A   | N/A   | TRMBISBB                           | TRMBISBB                           |
| White collar trim (optional)                  | N/A                                | N/A   | N/A   | TRMBISWW                           | TRMBISWW                           |
| Stainless steel collar trim (optional)        | N/A                                | N/A   | TRMBISSS                                      | TRMBISSS                           | TRMBISSS                           |

\*Color(s) available: BS = Black case with stainless steel doors, WW = White on white, CC = Bisque, BB = Black on black.  
ALL MODELS AVAILABLE IN U.S. AND CANADA.

# Top-Freezer No-Frost Refrigerators

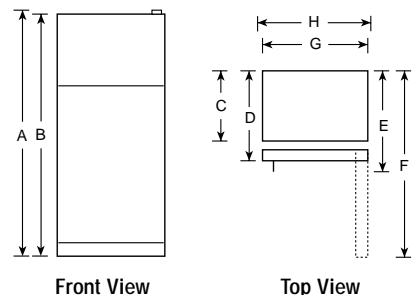
|   | GE "C" Series              |                            |
|---|----------------------------|----------------------------|
|   | TBX21CIB                   | TBX18CIB                   |
| <b>Capacity</b>                                   |                            |                            |
| Total (cu. ft.)                                   | 20.6                       | 18.2                       |
| Fresh food (cu. ft.)                              | 14.25                      | 13.04                      |
| Freezer (cu. ft.)                                 | 6.30                       | 5.13                       |
| Shelf area (sq. ft.)                              | 25.2                       | 24.4                       |
| <b>Features</b>                                   |                            |                            |
| Automatic icemaker and ice bin                    | Factory-Installed          | Factory-Installed          |
| Ice storage bin                                   | Ice Bucket                 | Ice Bucket                 |
| Cabinet shelves                                   | 4 Glass                    | 4 Glass                    |
| (adjustable)                                      | 4 Split                    | 4 Split                    |
| (spill-proof)                                     | 4                          | 4                          |
| Snack pan   | ●                          | ●                          |
| Vegetable/fruit crisper(s)                        | 2 Adj. Humid.              | 2 Adj. Humid.              |
| Fixed Door shelves                                | 3 Enclosed (2 w/gal. stor) | 3 Enclosed (2 w/gal. stor) |
| Slide-out, slide-over pans                        | ●                          | ●                          |
| Snuggler™ Clip(s)                                 | 2                          | 2                          |
| Dairy compartment                                 | ●                          | ●                          |
| Butter dish                                       | ●                          | ●                          |
| Freezer compartment shelf(s) (wire Everwhite)     | 1 F/W (2-Pos.)             | 1 F/W (2-Pos.)             |
| Freezer door shelves                              | 2                          | 2                          |
| Cross-brace retainer                              | ●                          | ●                          |
| Adjustable rollers                                | ●                          | ●                          |
| <b>Economical/Quiet</b>                           |                            |                            |
| Quiet Package I                                   | ●                          | ●                          |
| Energy Saver Switch                               | ●                          | ●                          |
| Cabinet/door insulation                           | Foam                       | Foam                       |
| Cabinet/door liner                                | ABS                        | ABS                        |
| <b>Appearance</b>                                 |                            |                            |
| Color(s) available**                              | WW, AA, BB                 | WW, AA                     |
| Deluxe door handle(s)                             | CM/Premium                 | CM/Premium                 |
| Customer installed handles                        | ●                          | ●                          |
| Textured steel doors & case                       | ●                          | ●                          |
| Reversible doors***                               | ●                          | ●                          |
| <b>Weights &amp; Dimensions</b>                   |                            |                            |
| Height to top of hinge (in.) A                    | 66-7/8                     | 64-3/4                     |
| Height to top of case (in.) B                     | 66-1/4                     | 64                         |
| Case depth without door (in.) C                   | 27-5/8                     | 27-3/4                     |
| Case depth less door handle (in.) D               | 30                         | 30                         |
| Case depth with door handle (in.) E               | 31-3/4                     | 31-3/4                     |
| Depth with door open 90° (in.) F                  | 60                         | 58-1/8                     |
| Width (in.) G                                     | 31-1/4                     | 29-3/8                     |
| Width with door open 90° less door handle (in.) H | 31-1/4                     | 29-3/8                     |
| Air clearances                                    | Each side (in.)            | 3/4                        |
| Top (in.)   | 1                          | 1                          |
| Back (in.)  | 1                          | 1                          |
| Approx. shipping weight (lbs.)                    | 231                        | 213                        |
| <b>Accessories</b>                                |                            |                            |
| Black acrylic panels                              | N/A                        | N/A                        |
| Magnetic black acrylic panel kit                  | N/A                        | N/A                        |

\*Shelf needs to stay in lower position to support ice bucket and icemaker.

\*\*Color(s) available: WW = White on white, AA = Almond on almond, BB = Black on black, CM = Color-Matched.

\*\*\*Order as right-hand door opening with option to change to left-hand door opening.

## Top-Mount No-Frost Refrigerator



# Top-Freezer No-Frost Refrigerators

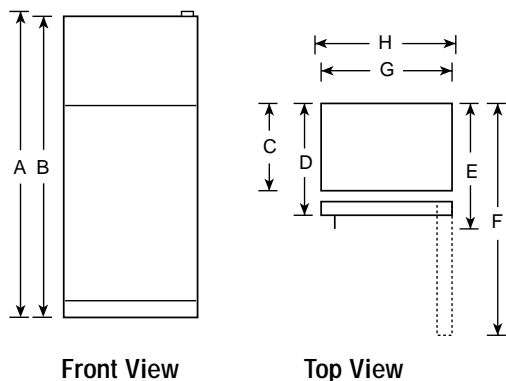
|   | GE "I" Series                   |                                 | GE "S" Series                   |                                 |                       |                       |                                 |                       |                  |                  | GE "R" Series           |
|---|---------------------------------|---------------------------------|---------------------------------|---------------------------------|-----------------------|-----------------------|---------------------------------|-----------------------|------------------|------------------|-------------------------|
|   | TBX21IAB<br>TBX21IIB            | TBX18IAD<br>TBX18IID            | TBX18SAB<br>TBX18SIB            | TBX16SAB<br>TBX16SIB            | TBX16SYB              | TBX16SSB              | TBX14SAB<br>TBX14SIB            | TBX14SYB              | TBX12SAX         | TBX10SNB         | TBX16RIC                |
| <b>Capacity</b>                                   |                                 |                                 |                                 |                                 |                       |                       |                                 |                       |                  |                  |                         |
| Total (cu. ft.)                                   | 20.6                            | 18.2                            | 18.2                            | 16.4                            | 16.4                  | 15.6                  | 14.4                            | 14.4                  | 12.1             | 9.8              | 15.6                    |
| Fresh food (cu. ft.)                              | 14.25                           | 13.04                           | 13.04                           | 12.58                           | 12.58                 | 11.69                 | 10.58                           | 10.58                 | 9.1              | 7.5              | 11.69                   |
| Freezer (cu. ft.)                                 | 6.30                            | 5.13                            | 5.13                            | 3.86                            | 3.86                  | 3.86                  | 3.86                            | 3.86                  | 3.0              | 2.33             | 3.86                    |
| Shelf area (sq. ft.)                              | 26.0                            | 23.1                            | 23.1                            | 17.5/16.7                       | 17.5                  | 17.2                  | 17.2/16.4                       | 17.2                  | 13.6             | 12.1             | 16.4                    |
| <b>Features</b>                                   |                                 |                                 |                                 |                                 |                       |                       |                                 |                       |                  |                  |                         |
| Automatic icemaker and ice bin                    | Opt. (IM3)<br>Factory-Installed | Opt. (IM3)<br>Factory-Installed | Opt. (IM3)<br>Factory-Installed | Opt. (IM3)<br>Factory-Installed | Opt. (IM3)            | Opt. (IM3)            | Opt. (IM3)<br>Factory-Installed | Opt. (IM3)            | Opt. (IM3)       |                  | Factory-Installed       |
| Ice 'N Easy trays                                 | 2/-                             | 2/-                             | 2/-                             | 2/-                             | 2                     | 2                     | 2/-                             | 2                     | 2                | 2                |                         |
| Ice storage bin                                   | Utility-Opaque<br>Ice Bucket    | Utility-Opaque<br>Ice Bucket    | Utility-WH<br>Ice Bucket        | -                               |                       |                       | ●<br>Bucket                     |                       |                  |                  | Utility-Opaque          |
| High ice shelf                                    | ●/-                             | ●/-                             |                                 | ●/-                             | ●                     | ●                     | ●/-                             | ●                     |                  |                  |                         |
| Cabinet shelves                                   | 3 Glass                         | 3 Glass                         | 3 Wire Everwhite                | 2 Wire Everwhite                | 2 Wire Everwhite      | 2 Wire Everwhite      | 2 Wire Everwhite                | 2 Wire Everwhite      | 2 Wire Everwhite | 2 Wire Everwhite | 2 Wire                  |
| (adjustable)                                      | 2 Split, 1 F/W                  | 2 Split, 1 F/W                  | 2 Split, 1 F/W                  | 2 F/W                           | 2 F/W                 | 2 F/W                 | 2 F/W                           | 2 F/W                 | 2 F/W            | 2 F/W            | 2 F/W                   |
| (spill-proof)                                     |                                 |                                 |                                 |                                 |                       |                       |                                 |                       |                  |                  |                         |
| Snack pan   | ●                               | ●                               | ●                               |                                 |                       |                       |                                 |                       |                  |                  |                         |
| Vegetable/fruit crisper(s)                        | 2 Clear High                    | 2 Clear High                    | 2                               | 2                               | 2                     | 2                     | 2                               | 2                     | Divided          | 1 F/W            | 2 White                 |
| Fixed Door shelves                                | 3 (2 w/gallon storage)          | 2 w/gallon storage              | 2 w/gallon storage              | 2-tall bottle storage           | 2-tall bottle storage | 2-tall bottle storage | 2-tall bottle storage           | 2-tall bottle storage | 2-1/2            | 4                | 2 w/tall bottle storage |
| Slide-out, slide-over pans                        | ●                               | ●                               | ●                               |                                 |                       | ●                     |                                 |                       |                  |                  | ●                       |
| Dairy compartment                                 | ●                               | ●                               | ●                               | ●                               | ●                     | ●                     | ●                               | ●                     | ●                |                  | ●                       |
| Butter dish                                       | ●                               | ●                               | ●                               |                                 |                       |                       |                                 |                       |                  |                  |                         |
| Utility (egg) bin                                 |                                 | ●                               |                                 | ●                               |                       |                       |                                 |                       |                  |                  |                         |
| Freezer compartment shelf(s) (wire Everwhite)     | 1 F/W (2-Pos.)                  | 1 F/W                           | 1 F/W (2-Pos.)                  |                                 |                       |                       |                                 |                       |                  | 1 F/W            |                         |
| Freezer door shelves                              | 2                               | 2                               | 2                               | 2                               | 2                     | 2                     | 2                               | 2                     | 2                | 1                | 2                       |
| Cross-brace retainer                              | ●                               | ●                               | ●                               | ●                               | ●                     | ●                     | ●                               | ●                     | ●                | ●                | ●                       |
| Adjustable rollers                                | ●                               | ●                               | ●                               | 4 Fixed, 2 Level Legs           | 4 Fixed, 2 Level Legs | 4 Fixed, 2 Level Legs | 4 Fixed, 2 Level Legs           | 4 Fixed, 2 Level Legs | Level Legs       | Level Legs       | 4 Fixed, 2 Level Legs   |
| <b>Economical/Quiet</b>                           |                                 |                                 |                                 |                                 |                       |                       |                                 |                       |                  |                  |                         |
| Energy Saver Switch                               | ●                               | ●                               |                                 |                                 |                       |                       |                                 |                       |                  |                  |                         |
| Cabinet/door insulation                           | Foam                            | Foam                            | Foam                            | Foam                            | Foam                  | Foam                  | Foam                            | Foam                  | Foam             | Foam             | Foam                    |
| Cabinet/door liner                                | ABS                             | ABS                             | ABS                             | ABS                             | ABS                   | ABS                   | ABS                             | ABS                   | ABS              | ABS              | ABS                     |
| <b>Appearance</b>                                 |                                 |                                 |                                 |                                 |                       |                       |                                 |                       |                  |                  |                         |
| Color(s) available**                              | WW, AA                          | WW, AA                          | WW, AA                          | WW, AA                          | WW, AA                | WW, AA                | WW, AA                          | WW, AA                | WW, AA           | WH, AD           | WW, AA                  |
| Deluxe door handle(s)                             | CM                              | CM                              | CM                              | CM                              | CM Recessed           | CM                    | CM                              | CM Recessed           | CM               | Black            | White Recessed          |
| Customer installed handles                        | ●                               | ●                               | ●                               |                                 |                       |                       |                                 |                       |                  |                  |                         |
| Textured steel doors & case                       | ●                               | ●                               | ●                               | ●                               | ●                     | ●                     | ●                               | ●                     | ●                | ●                | ●                       |
| Reversible doors***                               | ●                               | ●                               | ●                               | ●                               | ●                     | ●                     | ●                               | ●                     | ●                | ●                | ●                       |
| Right or left door opening available              |                                 |                                 | ●                               | ●                               | ●                     | ●                     | ●                               | ●                     | ●                | ●                | ●                       |
| <b>Weights &amp; Dimensions</b>                   |                                 |                                 |                                 |                                 |                       |                       |                                 |                       |                  |                  |                         |
| Height to top of hinge (in.) A                    | 66-3/4                          | 64-3/4                          | 64-3/4                          | 67-3/8                          | 67-3/8                | 64-3/4                | 61-3/4                          | 61-3/4                | 60-5/8           | 59-1/8           | 64-3/4                  |
| Height to top of case (in.) B                     | 66-1/4                          | 64                              | 64                              | 66-7/8                          | 66-7/8                | 64-1/4                | 61-1/4                          | 61-1/4                | 60-1/4           | 58-5/8           | 64-1/4                  |
| Case depth without door (in.) C                   | 27-5/8                          | 27-3/4                          | 27-3/4                          | 26-1/4                          | 26-1/4                | 25-3/8                | 25-3/8                          | 25-3/8                | 27-7/16          | 25               | 25-3/8                  |
| Case depth less door handle (in.) D               | 30                              | 30                              | 30                              | 28-3/4                          | 28-3/4                | 27-7/8                | 27-7/8                          | 27-7/8                | 29-11/16         | 26-3/8           | 27-7/8                  |
| Case depth with door handle (in.) E               | 31-3/4                          | 31-3/4                          | 31-3/4                          | 30-5/8                          | 28-3/4                | 29-3/4                | 29-3/4                          | 29-3/4                | 31-7/16          | 28               | 29-3/4                  |
| Depth with door open 90° (in.) F                  | 60                              | 58-1/8                          | 58-1/8                          | 55-1/4                          | 55-1/4                | 54-3/8                | 54-3/8                          | 54-3/8                | 51-9/16          | 48-3/4           | 54-3/8                  |
| Width (in.) G                                     | 31-1/4                          | 29-3/8                          | 29-3/8                          | 28                              | 28                    | 28                    | 28                              | 28                    | 23-3/8           | 23-5/8           | 28                      |
| Width with door open 90° less door handle (in.) H | 31-1/4                          | 29-3/8                          | 29-3/8                          | 28-1/4                          | 28-1/4                | 28-1/4                | 28-1/4                          | 28-1/4                | 23-9/16          | 24-1/8           | 28-1/4                  |
| Air clearances                                    |                                 |                                 |                                 |                                 |                       |                       |                                 |                       |                  |                  |                         |
| Each side (in.)                                   | 3/4                             | 3/4                             | 3/4                             | 3/4                             | 3/4                   | 3/4                   | 3/4                             | 3/4                   | 3/4              | 3/4              | 3/4                     |
| Top (in.)   | 1                               | 1                               | 1                               | 1                               | 1                     | 1                     | 1                               | 1                     | 2                | 1                | 1                       |
| Back (in.)  | 1                               | 1                               | 1                               | 1                               | 1                     | 1                     | 1                               | 1                     | 3/4              | 1                | 1                       |
| Approx. shipping weight (lbs.)                    | 231                             | 220/211                         | 230                             | 190/195                         | 188                   | 170                   | 174                             | 168                   | 152              | 157              | 170                     |
| <b>Accessories</b>                                |                                 |                                 |                                 |                                 |                       |                       |                                 |                       |                  |                  |                         |
| Black acrylic panels                              | N/A                             | N/A                             | N/A                             | N/A                             | N/A                   | N/A                   | N/A                             | N/A                   | N/A              | N/A              | N/A                     |
| Magnetic black acrylic panel kit                  | TBP21XB                         | TBP18XB                         | TBP18XB                         | N/A                             | N/A                   | N/A                   | N/A                             | N/A                   | N/A              | N/A              | N/A                     |

\*Shelf needs to stay in lower position to support ice bucket and icemaker.

\*\*Color(s) available: WW = White on white, AA = Almond on almond, BB = Black on black, CM = Color-Matched.

\*\*\*Order as right-hand door opening with option to change to left-hand door opening.

## Top-Mount No-Frost Refrigerator



Front View

Top View

## Refrigerator Warranty

(All models except: TAX2SNCWH/BL, TAX2SNYWN, TAX4SN)

**Full One-Year Warranty** (parts and labor at no additional charge) applies to the entire refrigerator.

**Full Five-Year Warranty** on the sealed refrigerating system (includes compressor, condenser, evaporator and all connecting tubing). Complete details available from your dealer.



Listed by  
Underwriters Laboratories

**Limited Lifetime Warranty** for the life of the refrigerator, we will replace, at no additional charge any tinted see-through pan, drawer or bin made from polycarbonate resin and furnished with the refrigerator if the pan or drawer breaks during normal household use. Drawer covers are not included. You must take the pan or drawer to a GE Appliance Parts Mart and pick up a replacement.

## Water Filter Warranty

Limited 30-Day parts only.



# Fresh Ideas In Refrigeration™



New contoured doors are gently rounded and have a smooth, high-gloss finish for a high-fashion look. GE's year 2000 side-by-side refrigerators are designed and loaded with features that keep America's number one brand ahead of the curve.



## **Water by Culligan™ Filtration**

- GE exclusive
- Filtered water and ice
- Easy to remove and replace filter



## **ClearLook™ Door Bins**

- Clear, fresh look
- Two-gallon capacity
- Limited lifetime warranty\*

\*See warranty for details



## **ShelfSaver™**

- Adds flexible space
- Holds hard-to-store items
  - cans
  - egg cartons
  - 9" x 13" casserole dish

From the fresh, new appearance to fresh-tasting ice and water, GE gives consumers what they want.

## Industry Leading Service Support From—



America's  
**#1**  
Preferred  
Appliance  
Brand

GE is the appliance brand most often mentioned among the brands rated as offering the best products and services in America.\*

\*Source: Louis Harris Poll – 1999



**GE Appliances**

## **The GE Answer Center® Information Service 800.626.2000. Questions? Call any time.**

Before or after you buy any GE product, ask us about the features, product comparisons, pricing and where to find it. Call us any time. We never close.

## **GE Genuine Parts 800.626.2002. Enhance, upgrade or fix it. Check out our accessories!**

Accessories can make great GE products even better. Replacement parts for GE and most other brands, too. Fast delivery, convenient, direct.

## **GE Appliance Service 800.432.2737 (800.GE.CARES)**

If you ever need product service, we'll come where and when you want—at your convenience. We're the largest manufacturer-owned service organization in the appliance industry. Same or next day service in most cases. Buy with confidence from GE.

**Visit us at [www.geappliances.com](http://www.geappliances.com)**