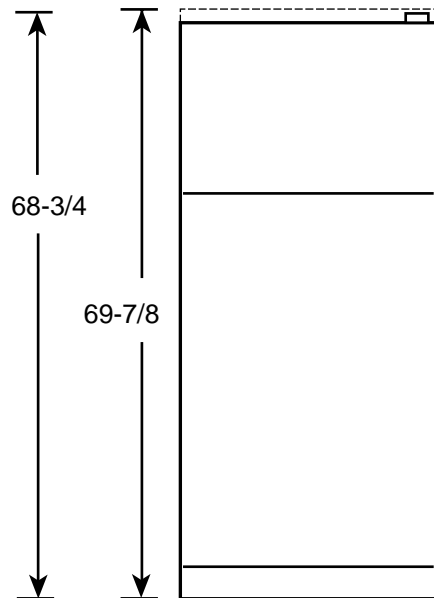




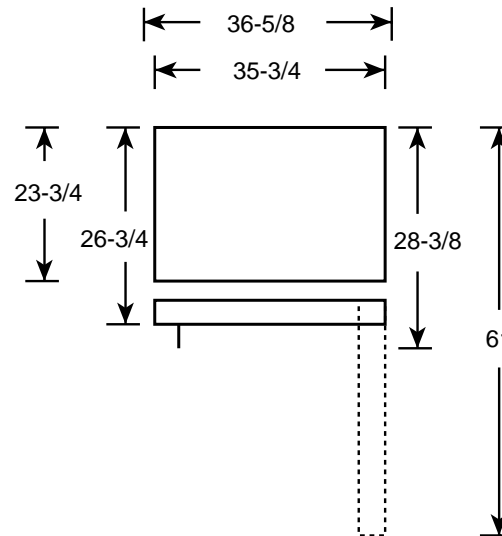
*Profile™*

## PTI22SFM - GE Profile™ 21.7 Cu. Ft. CustomStyle™ Top-Freezer Refrigerator with Dispenser

### Case Dimensions (in inches/cm.)



Front View



Top View

### Clearances

#### Handle Side Clearance

–At least 2" (51 mm) on the handle side for fingertip clearances.

#### Top and Bottom Clearance

–At least 3/16" (4.75 mm) at the top and bottom edges to allow for trim flange.

#### Hinge Side Clearance

–The installation of 3/4" (19 mm) thick side panels requires less clearance because the space between the door and adjacent countertop is wider.

- To avoid door contact to countertop consider:
  - Miter the corner of the adjacent countertops 45°, or
  - pull the refrigerator forward enough to avoid contact.

**IMPORTANT:** Before finalizing specifications for your GE Profile Performance™ CustomStyle™ Refrigerator, Please NOTE:

- A minimum of 36" is required for refrigerator installation
- Be sure to allow for 1/2" or 3/4" side panels in addition to the 36" minimum

Specification Revised 7/01

For answers to your Monogram®, GE Profile™ or GE appliance questions, visit our website at [GEAppliances.com](http://GEAppliances.com) or call GE Answer Center® service, 800.626.2000.



Total volume and shelf area are calculated by the Association of Home Appliance Manufacturers' standards.



Listed by Underwriters Laboratories



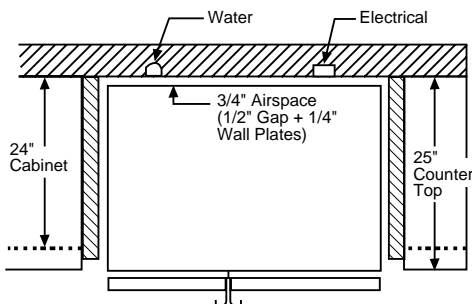
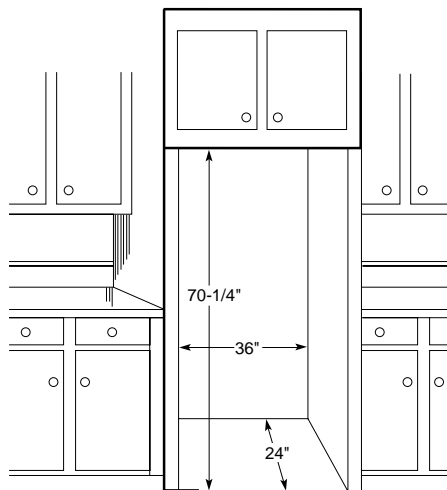
As an ENERGY STAR® Partner, GE has determined that this product meets the ENERGY STAR® guidelines for energy efficiency.



Profile™

## PTI22SFM - GE Profile™ 21.7 Cu. Ft. CustomStyle™ Top-Freezer Refrigerator with Dispenser

### Rough-In Dimensions (in inches)



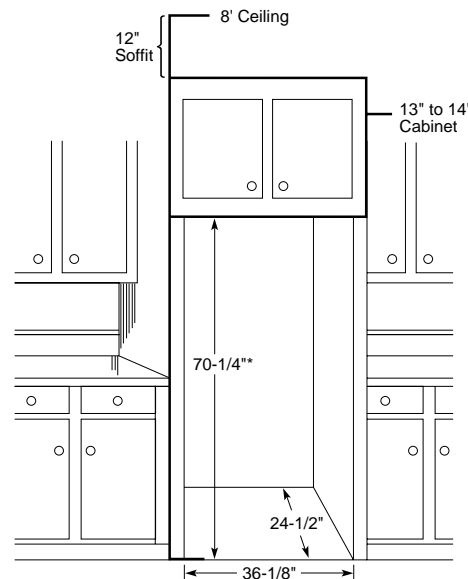
### Standard, New Construction and Replacement Installation

#### Installation Tips to Maximize the Built-In Look

- All wall/floor moulding should be removed prior to installation.
- Water recess on rear wall recommended to prevent water line damage. 48" minimum length 1/4" diameter water line tubing recommended.
- When possible, recess both water line and electrical outlet. (See local codes)
- Front and rear leveling legs are adjustable for the "Built-In" look. (See owner's manual)

\* 22" depth applies to the refrigerator opening, not the actual cabinet depth.

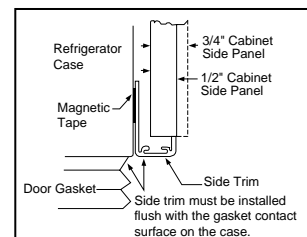
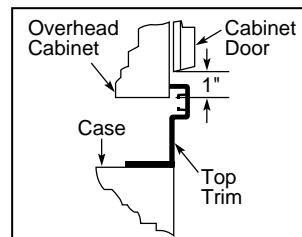
### Collar Trim Installation



An enclosure is **required** to match up to the trim, see Typical Installation. To obtain the most integrated look, the cabinet or soffit above the refrigerator should extend out to the same depth as the side panels. The refrigerator opening must have minimum dimensions of 70-1/4" high x 36-1/8" wide x 24-1/2" deep as shown at right. If there is an overhead cabinet, allow 1" for cabinet door clearance with the top trim piece so the cabinet doors can be opened without hitting the top trim. If 1/2" side panels are used, then side trim and panel will be even. If 3/4" side panels are used, then some of the side panel will extend beyond the trim and must be finished.

\*The rough-in dimension of 70-1/4" is minimum and is measured from the finished floor to top of opening (or the underside of the overhead cabinets).

For Models with Trim Kit: If frameless style cabinets are planned for above the refrigerator, you may need to consider adding a maximum of 1/4" (70-1/2") to height of opening to allow additional clearance between cabinet doors and top of refrigerator trim when cabinet doors are in open position.



Specification Revised 7/01



Total volume and shelf area are calculated by the Association of Home Appliance Manufacturers' standards.



Listed by  
Underwriters  
Laboratories

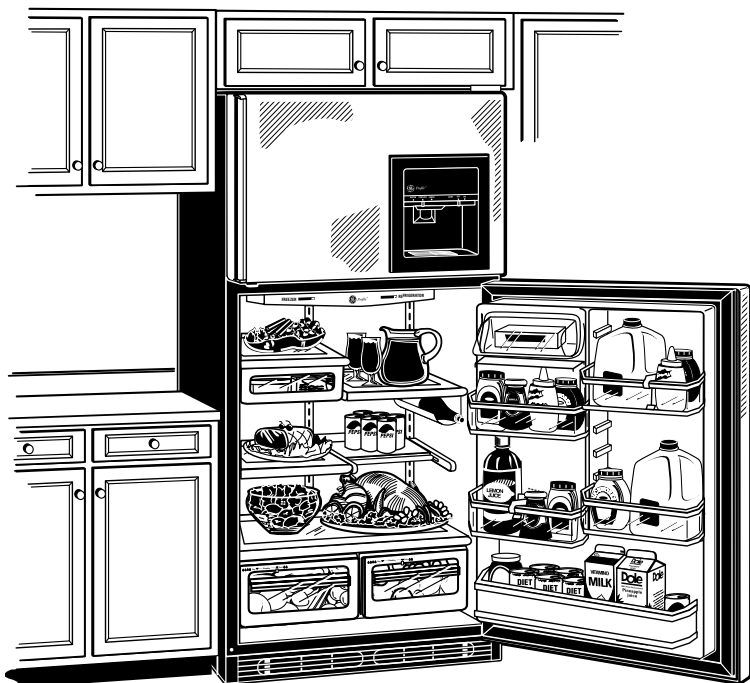


As an ENERGY STAR® Partner, GE has determined that this product meets the ENERGY STAR® guidelines for energy efficiency.



*Profile™*

## PTI22SFM - GE Profile™ 21.7 Cu. Ft. CustomStyle™ Top-Freezer Refrigerator with Dispenser



### Features and Benefits

- 21.7 cu ft Capacity (Fresh Food 15.4 cu ft / Freezer 6.5 cu ft)
- SmartWater™ Provides Cleaner, Better Tasting Water and Ice through the LightTouch! Dispenser
- 2 Adjustable Humidity Vegetable/Fruit Crispers with Spill-Proof Crisper Cover
- Adjustable Temperature Meat Pan
- Slide-Out, Slide-Over Pans
- 4 Adjustable, Split Glass Fresh Food Cabinet Shelves (3 Slide-Out, Spill Proof)
- 3 Adjustable ClearLook™ Modular Door Bins with Gallon Storage
- 1 Fixed Fresh Food Door Bin with Tall Bottle Storage
- QuickSpace™ Shelf
- Beverage Rack
- Dairy Compartment
- 1 Adjustable Wire Everwhite Freezer Compartment Shelf
- 2 Freezer Door Gallon Bins
- Ice Storage Bin
- Deluxe Quiet Design
- Stainless Steel Premium Door Handles
- Energy Star Rated
- Model PTI22SFMBS - Stainless steel