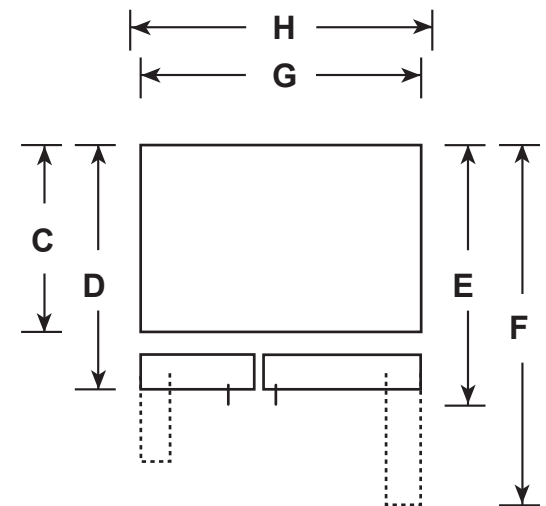
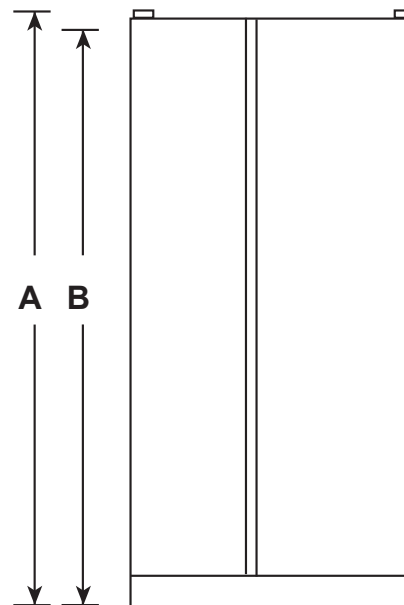


PZS23KSE/PZS23KGE

GE Profile™ Series 23.3 Cu. Ft. Counter-Depth Side-by-Side Refrigerator

DIMENSIONS AND INSTALLATION INFORMATION (IN INCHES)

OVERALL DIMENSIONS	Height to top of hinge (in.) A	69-1/4
	Height to top of case (in.) B	68-3/4
	Case depth without door (in.) C	23-7/8
	Case depth less door handle (in.) D	27-1/8
	Case depth with door handle (in.) E	29-3/4
	Depth with fresh food door open 90° (in.) F	46
	Width (in.) G	35-3/4
	Width with door open 90° with door handle (in.) H	41-5/8
AIR CLEARANCES	Each side (in.)	1/8
	Top (in.)	1
	Back (in.)	2



†Water hook-up fits in back air clearance when calculating installation depth.

If installed against a wall, allow clearance of 14-3/16" on freezer side to remove bin.

Clearance required to remove fresh food full-size pan without disassembling is 18-15/16".

Allow additional space for any necessary leveling adjustments.



For answers to your Monogram, GE Café™ Series, GE Profile™ Series or GE Appliances product questions, visit our website at geappliances.com or call GE Answer Center® Service, 800.626.2000.



Listed by
Underwriters
Laboratories



Specification Revised 4/16

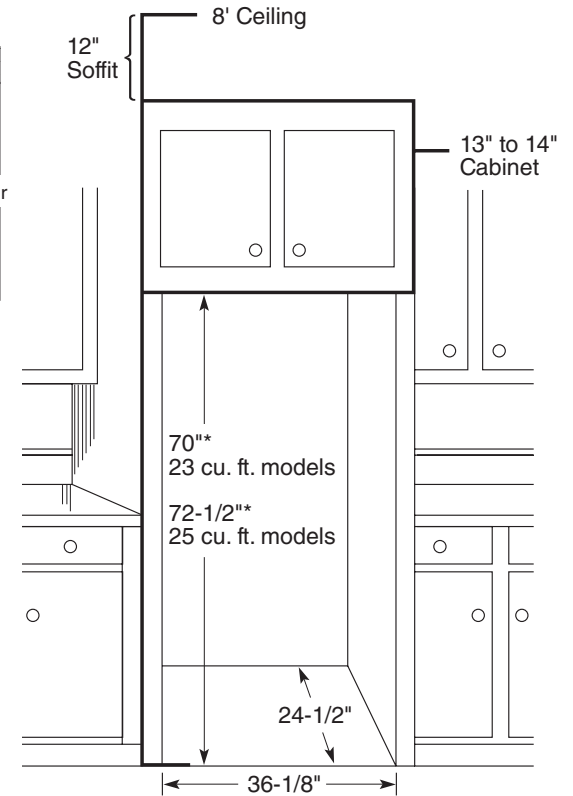
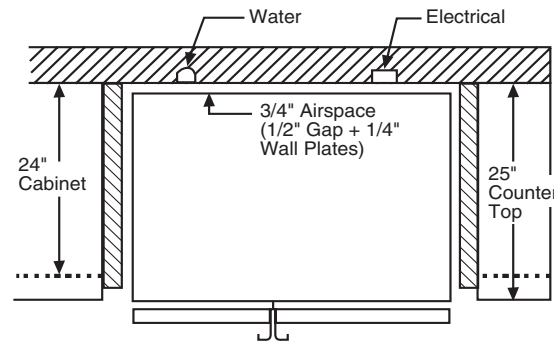
PZS23KSE/PZS23KGE

GE Profile™ Series 23.3 Cu. Ft. Counter-Depth Side-by-Side Refrigerator

INSTALLATION TIPS TO MAXIMIZE THE BUILT-IN LOOK

- All wall/floor molding should be removed prior to installation.
- Water recess on rear wall recommended to prevent water line damage. 48" minimum length, 1/4" diameter water line tubing recommended.
- When possible, recess both copper water line and electrical outlet. (See local codes)
- Front and rear leveling legs are adjustable for the built-in look. (See owner's manual)

*The rough-in dimensions of 70" for 23 cu. ft. models and 72-1/2" for 25 cu. ft. models are minimum and measured from the finished floor to top of opening (or the underside of the overhead cabinets). For Models with Trim Kit: If frameless style cabinets are planned for above the refrigerator, you may need to consider adding a maximum of 1/4" (70-1/4") to height of opening for 23 cu. ft. models and 1/8" (72-5/8") for 25 cu. ft. models to allow for additional clearance between the cabinet doors and the top of refrigerator trim when the cabinet doors are in open position.



For answers to your Monogram, GE Café™ Series, GE Profile™ Series or GE Appliances product questions, visit our website at geappliances.com or call GE Answer Center® Service, 800.626.2000.



Listed by
Underwriters
Laboratories



Specification Revised 4/16

PZS23KSE/PZS23KGE

GE Profile™ Series 23.3 Cu. Ft. Counter-Depth Side-by-Side Refrigerator

FEATURES AND BENEFITS

Counter-depth design – Offers a built-in look by fitting nearly flush with surrounding cabinetry
70" tall

Integrated shelf support system – Provides strong, flexible support

Adjustable slide-out, spillproof glass shelves – Raised edges help contain spills and make cleanup quick and easy

Adjustable Clear Look door bins – Offer ideal space for storing large containers in the door and free up valuable space

In-the-door beverage rack – Beverages are chilled and ready without taking up valuable space

Tilt-out freezer bins – Rotate forward for convenient access

Quick Ice setting – Creates ice up to 50% faster than normal settings

Turbo Cool setting – Drops interior temperature to maintain freshness after frequent openings

Advanced water filtration uses MWF replacement filter – Reduces trace pharmaceuticals from water and ice*
(* Removes 98% of ibuprofen, atenolol, fluoxetine, progesterone and trimethoprim. These pharmaceuticals are not necessarily in all users' water)

Model PZS23KSESS – Stainless steel

Model PZS23KGEWW – High-gloss White

Model PZS23KGEBB – High-gloss Black

