

(with standard depth sleeve)

# PTAC SERIES A QUICK SPECS

### COOL SERIES

- AHES07D2XXA    AHES09D3XXA
- AHES07D3XXA    AHES12D3XXA
- AHES09D2XXA    AHES15D3XXA

### HEAT PUMP SERIES

- AHHS07D2XXA    AHHS12D3XXA
- AHHS07D3XXA    AHHS15D3XXA
- AHHS09D2XXA    AHHS09E3XXA
- AHHS09D3XXA    AHHS12E3XXA

#### KEY PRODUCT POINTS

Fan Speeds	<b>2</b>
Auto Dimming Display	✓
Slinger Condensate Removal	✓
Automatic Emergency Heat	✓
Freeze Frost Protection	✓
Overheat Protection	✓
Auto Power Recovery	✓
Self-Diagnostics	✓
Constant Fan Button	✓
24 VAC Remote Wall Thermostat (requires kit, purchased separately)	✓
Voltage (Unit Specific)	<b>230-208V /1Ph / 60Hz/ 265V/1Ph/60Hz</b>
Amperage (Unit Specific)	<b>15 or 20 Amp Options</b>
Attached Cord (230V models only)	✓
Control Panel	<b>LED</b>
Refrigerant	<b>R32</b>
Filter	<b>Removable/Washable</b>
Installation Hardware	✓
Accessories & Replacement Parts	<b>Sold Separately</b>



**GE APPLIANCES  
IS COMMITTED TO  
REDUCING  
OUR ENVIRONMENTAL  
IMPACT**

#### WARRANTIES

- 1-Year Full Parts & Labor
- 2-5 Year Limited Warranty
- 5 Year Limited Warranty



**Hotpoint** America's hardest working appliances.

# HOTPOINT COOL SERIES A

HOTPOINT COOL SERIES A 230/208V COOLING WITH ELECTRIC RESISTANCE HEAT						
	AHES07D2XXA	AHES07D3XXA	AHES09D2XXA	AHES09D3XXA	AHES12D3XXA	AHES15D3XXA
<b>SPECIFICATIONS</b>						
Voltage	230-208V /1Ph / 60Hz					
Amperage	15A	20A	15A	20A	20A	20A
Cooling Capacity BTUh	7,200/7,000	7,200/7,000	9,400/9,200	9,400/9,200	12,400/12,200	14,500/14,300
Cooling Power (W)	600/575	600/575	830/805	830/805	1,190/1,160	1,490/1,470
Electric Heating Capacity (kw)	2.5	3.5	2.5	3.5	3.5	3.5
Airflow (CFM)	480/400	480/400	500/420	500/420	600/530	630/530
Fresh Air (CFM) Requires RAKVENTH Kit	16.8/17.5	16.8/17.5	16.8/17.5	16.8/17.5	16.8/17.5	16.8/17.5
EER	12.0/12.1	12.0/12.1	11.3/11.4	11.3/11.4	10.4/10.5	9.7/9.7
Dehumidification (pt/hr)	0.95	0.95	1.86	1.86	2.85	4.02
Sensible Heat Ratio	88.5	88.5	79	79	73.5	72.4
Refrigerant	R32					
Refrigerant Charge (Oz)	12.35	12.35	13.76	13.76	16.58	17.28
<b>WEIGHTS &amp; DIMENSIONS</b>						
Chassis with Sleeve Height (In)	16	16	16	16	16	16
Chassis with Sleeve Width (In)	42	42	42	42	42	42
Chassis with Sleeve Depth (In)	21	21	21	21	21	21
Shipping Weight (Lbs)	89.96	89.96	94.37	94.37	102.09	104.30
Net Weight (Lbs)	79.38	79.38	83.79	83.79	91.51	93.71
<b>FEATURES</b>						
Heat Pump Defrost	NA	NA	NA	NA	NA	NA
Heat Pump Low Operation Temp	NA	NA	NA	NA	NA	NA
24V Wall Thermostat Capable with Optional Kit	RAKDTKH	RAKDTKH	RAKDTKH	RAKDTKH	RAKDTKH	RAKDTKH
Power Supply Cord	Fixed Cord with LCDI					
Plug Type	NEMA 3-15P	NEMA 3-20P	NEMA 3-15P	NEMA 3-20P	NEMA 3-20P	NEMA 3-20P
Compressor	Rotary Compressor					
Fresh Air Kit (if required)	RAKVENTH	RAKVENTH	RAKVENTH	RAKVENTH	RAKVENTH	RAKVENTH
Touch Pad w/ LED, Temp and Mode Display	Green LEDs	Green LEDs	Green LEDs	Green LEDs	Green LEDs	Green LEDs
Fan Speed: Cooling (High, Low)	Yes	Yes	Yes	Yes	Yes	Yes
Fan Speed: Heating (High, Low)	Yes	Yes	Yes	Yes	Yes	Yes
Fan Only Speed Selections (High, Low)	Yes	Yes	Yes	Yes	Yes	Yes
Automatic Indoor Frost Control	Yes	Yes	Yes	Yes	Yes	Yes
Fan Motor	DC, Variable	DC, Variable	DC, Variable	DC, Variable	DC, Variable	DC, Variable
Freeze Sentinel Low Temperature Protection (Dip Switch)	Yes	Yes	Yes	Yes	Yes	Yes
Air Discharge Louvers	Non-Adjustable	Non-Adjustable	Non-Adjustable	Non-Adjustable	Non-Adjustable	Non-Adjustable
Temperature Limiting	Yes	Yes	Yes	Yes	Yes	Yes
Auto Power Recovery	Yes	Yes	Yes	Yes	Yes	Yes



## ACCESSORIES



◆ **Sub Base**  
RAK204D20H



◆ **Curtain Guard**  
RAK44



◆ **Hotpoint 2 Fan Speeds Wall Thermostat**  
RAK148H2A



◆ **Sub Base Disconnect Switch Kit (230/208 & 265V)**  
RAK204SW



◆ **Hotpoint Grille**  
(Sold Separately)  
RAG70



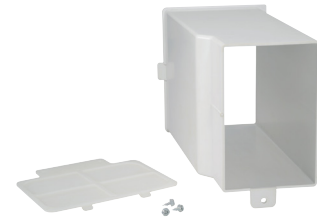
◆ **Hotpoint Thermostat Connect Kit for Series A**  
RAKDTKH (230/208V)  
RAKETKH (265V)



◆ **Hotpoint Replacement Air Filters, 2 pack for Series A**  
RAA71H



◆ **Hotpoint Wall Sleeve**  
RAB42MW



◆ **Hotpoint PTAC Fresh Air Vent Kit**  
RAKVENTH

For more information please visit our website at [hotpoint.com](http://hotpoint.com)  
Specification Revised 7/24 or message [Hospitality.Direct@geappliances.com](mailto:Hospitality.Direct@geappliances.com).

**Hotpoint**® America's hardest working appliances.