

GE® AND HOTPOINT® REFRIGERATORS

The Ultimate in Refrigeration.™



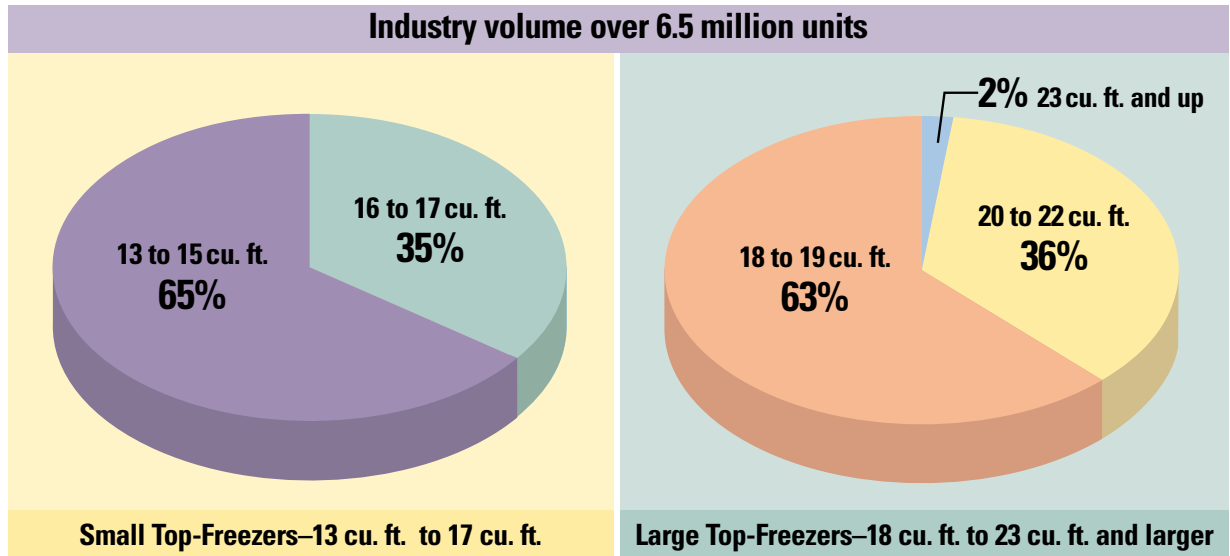
Rethought. Reinvented. Revolutionized.



We bring good things to life.

NOW THERE'S A GE AND HOTPOINT TOP-FREEZER

The 2002 top-freezer lineup has been extended to give today's consumers more choices than ever.



■ Large 18- and 20-cu.-ft models round out an already extensive product line.

■ New additions are aimed at consumers who want the conveniences of large capacity and storage flexibility without the high cost.

GE, America's number one preferred appliance brand*, offers a top-freezer to suit every need and lifestyle.

| Brand | Capacity | Market Segment | What Models Have To Offer |
|-------------------------|------------------|----------------|--|
| GE Profile Arctica™ | 25 cu. ft. | Premium | Innovative cooling capabilities and sophisticated styling make these award-winning top-freezers truly the ultimate in refrigeration. |
| GE Profile CustomStyle™ | 22 cu. ft. | Middle-Premium | Designed for today's discriminating consumers, these refrigerators offer a built-in look without the built-in expense. |
| GE and Hotpoint | 18 to 22 cu. ft. | Middle | Loaded with innovative features, these models strike an ideal balance between affordability and top performance. |
| GE and Hotpoint | 15 to 17 cu. ft. | Value | Ideal for tight spaces, these small wonders combine reliable performance and storage flexibility in a modern, spacesaving design. |

*GE is the appliance brand most often mentioned among the brands rated as offering the best products and services in America according to a recent Louis Harris Poll.

FOR EVERY CONSUMER, EVERY KITCHEN.



Performance

◀ Deluxe Quiet Design

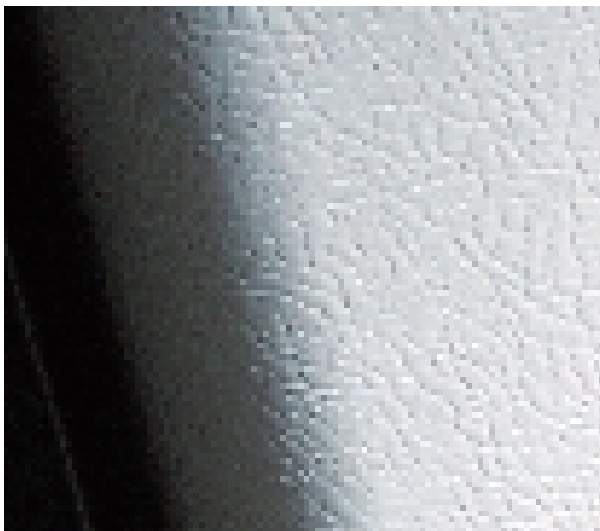
Continues GE's commitment to quiet operation, a must in today's kitchens.

Upfront temperature controls

Precise, easy to see and easy to set.

SpillKeeper™ shelves

Help contain spills for ease of cleaning.



Appearance

▲ Radius doors

Offer the signature rounded look that's seen in today's freshest kitchens.

▲ Textured finish

Helps minimize the appearance of fingerprints and surface scratches.

Dual upfront lighting

Puts refrigerator contents into full view.



Flexibility

▲ Clear snack pan

Helps keep meats and cheeses fresher, longer.

Clear crisper drawers

Provide the perfect storage environment for fruits and vegetables.

Adjustable gallon-size bins

Offer easy access to gallon-size containers.

New GE and Hotpoint top-freezers offer high performance at a highly affordable price.

GE® Top-Freezer “I” Series Models: 20 cu. ft.



Upfront temperature controls are easy to see and set.



Clear crispers provide easy storage for vegetables and fruit.



Gallon door storage accommodates gallon containers for quick access to most-used items.



SpillKeeper™ shelves help contain spills for ease of cleaning.



GE

Icemaker model

GTS20ICN

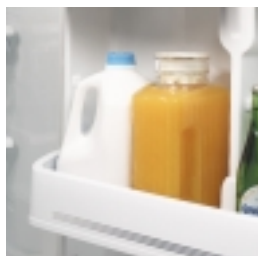
- 20.2 cu. ft. capacity • Upfront temperature controls • Three SpillKeeper™ glass shelves, two adjustable split and one full-width
- Two vegetable/fruit crispers • Snack pan • Three full-width gallon door bins (2 adjustable) • Deluxe quiet design

Non-Icemaker model

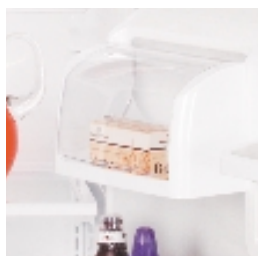
GTS20IBN (not shown)

- 20.2 cu. ft. capacity • Equipped for optional electronic icemaker

Hotpoint® Top-Freezer Models: 18 to 20 cu. ft.



Gallon door storage accommodates gallon containers for quick access to most-used items.



Clear, lift-open cover of the dairy compartment provides easy access to butter, cheese and other dairy products.



Hotpoint HTS18JCN

- 17.9 cu. ft. capacity • Upfront illuminated temperature controls • Two full-width, adjustable spillproof glass shelves • Two fixed encapsulated door bins (one with gallon storage) • Two clear vegetable/fruit crispers
- Clear snack pan • Equipped with factory-installed electronic icemaker • Spillproof freezer floor • Deluxe quiet design
- NeverClean condenser

HTS18JBN (not shown)

- 18.0 cu. ft. capacity • Similar features and appearance as HTS18JCN except without factory-installed electronic icemaker



Hotpoint HTS20GCN

- 20.2 cu. ft. capacity • Upfront temperature controls • Two full-width, adjustable SpillKeeper™ glass shelves • Two full-width adjustable gallon door bins • One fixed door bin with gallon door storage • Two clear vegetable/fruit crispers • Clear snack pan
- Equipped with factory-installed electronic icemaker • Deluxe quiet design

HTS18GCN (not shown)

- 18.0 cu. ft. capacity

HTS20GBN (not shown)

- 20.2 cu. ft. capacity • Similar features and appearance as HTS20GCN except without factory-installed electronic icemaker

HTS18GBN (not shown)

- 18.0 cu. ft. capacity • Similar features and appearance as HTS18GCN except without factory-installed electronic icemaker

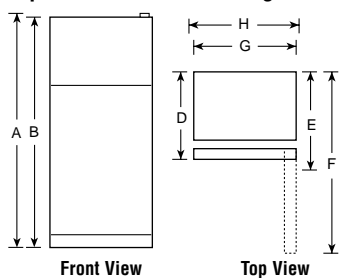
GE® Top-Freezer Refrigerators

| | GE "1" Series | |
|--|--|--|
| | GTS20IBN | GTS20ICN |
| Capacity | | |
| Total (cu. ft.) | 20.0 | 20.0 |
| Fresh food (cu. ft.) | 14.61 | 14.61 |
| Freezer (cu. ft.) | 5.41 | 5.41 |
| Shelf area (sq. ft.) | | |
| Fresh Food Features | | |
| Upfront temperature controls | ● | ● |
| Cabinet shelves | 3 Glass | 3 Glass |
| (adjustable) | 2 Split, 1 F/W | 2 Split, 1 F/W |
| (SpillKeeper™) | ● | ● |
| Vegetable/fruit crisper(s) | 2 Clear | 2 Clear |
| Snack pan | ● | ● |
| Door shelves | 3 w/gallon storage (1 F/W fixed; 2 F/W adj.) | 3 w/gallon storage (1 F/W fixed; 2 F/W adj.) |
| Dairy compartment | ● | ● |
| Interior light system | ● | ● |
| Quiet Design | Deluxe | Deluxe |
| Freezer Features | | |
| Factory-installed electronic icemaker | Opt. (IM4) | ● |
| Ice 'N Easy trays | 1 | |
| Ice storage bin | Ice Bucket | |
| Ice shelf | | Vertical |
| Wire freezer compartment shelves | 1 Adj. F/W | 1 Adj. F/W |
| Fixed door shelves | 2 Fixed | 2 Fixed |
| Exterior | | |
| Color(s) available* | WW/CC | WW/CC |
| Door handle(s) | Color-matched | Color-matched |
| Customer installed handles | ● | ● |
| Exterior design | Rounded Doors | Rounded Doors |
| Reversible doors | ● | ● |
| Adjustable rollers | Front | Front |
| Weights & Dimensions | | |
| Height to top of hinge (in.) A | 68-1/8 | 68-1/8 |
| Height to top of case (in.) B | 67-1/2 | 67-1/2 |
| Height to mid-freezer (in.) | | |
| Case depth without door (in.) C | 27-1/2 | 27-1/2 |
| Case depth less door handle (in.) D | 30-5/8 | 30-5/8 |
| Case depth with door handle (in.) E | 32-3/8 | 32-3/8 |
| Depth w/fresh food door open 90° (in.) F | 57-15/16 | 57-15/16 |
| Width (in.) G | 29-1/2 | 29-1/2 |
| Width w/door open 90° less door handle (in.) H | 30-3/4 | 30-3/4 |
| Air clearances Each side (in.) | 1/8 | 1/8 |
| Top (in.) | 1 | 1 |
| Back (in.) | 1 | 1 |
| Approx. shipping weight (lbs.) | 227 | 227 |

*Color(s) available: WW = White on white; CC = Bisque on bisque

ALL MODELS AVAILABLE IN U.S. AND CANADA.

Top-Freezer No-Frost Refrigerator



Total volume and shelf area are calculated by the Association of Home Appliance Manufacturers' standards.



Listed by Underwriters Laboratories

Note: All Top-Freezer No-Frost Right-Hand Refrigerator Doors: As you face the front of the refrigerator, the handle is on your left and the hinges are on your right.
 All Top-Freezer No-Frost Left-Hand Refrigerator Doors: As you face the front of the refrigerator, the handle is on your right and the hinges are on your left.

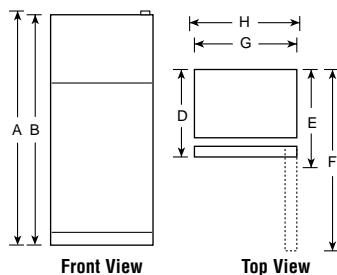
Hotpoint® Top-Freezer Refrigerators

| | HTS18JBN | HTS18JCN | HTS20GBN | HTS20GCN | HTS18GBN | HTS18GCN |
|--|---------------------------|---------------------------|-----------------------------|-----------------------------|-----------------------------|-----------------------------|
| Capacity | | | | | | |
| Total (cu. ft.) | 17.9 | 17.9 | 20.00 | 20.00 | 18.0 | 18.0 |
| Fresh food (cu. ft.) | 12.89 | 12.89 | 14.58 | 14.58 | 13.13 | 13.13 |
| Freezer (cu. ft.) | 5.03 | 5.03 | 5.44 | 5.44 | 4.84 | 4.84 |
| Shelf area (sq. ft.) | 21.8 | 21.8 | 24.2 | 24.2 | 22.5 | 22.5 |
| Fresh Food Features | | | | | | |
| Upfront temperature controls | Illuminated | Illuminated | ● | ● | ● | ● |
| Cabinet shelves | 2 Glass | 2 Glass | 2 Glass | 2 Glass | 2 Glass | 2 Glass |
| (adjustable) | 2 Full-width adj. | 2 Full-width adj. | 2 Full-width | 2 Full-width | 2 Full-width | 2 Full-width |
| (SpillKeeper™) | ● | ● | ● | ● | ● | ● |
| Vegetable/fruit crisper(s) | 2 | 2 | 2 Clear | 2 Clear | 2 Clear | 2 Clear |
| Snack pan | ● | ● | ● | ● | ● | ● |
| Fixed door bins | 2 (1 w/ gallon storage) | 2 (1 w/ gallon storage) | 1 FW | 1 FW | 1 FW | 1 FW |
| Door shelves | 1 split w/ gallon storage | 1 split w/ gallon storage | 2 F/W adj. w/gallon storage | 2 F/W adj. w/gallon storage | 2 F/W adj. w/gallon storage | 2 F/W adj. w/gallon storage |
| Dairy compartment | ● | ● | ● | ● | ● | ● |
| Interior light system | Dual | Dual | ● | ● | ● | ● |
| Quiet Design | Deluxe | Deluxe | Deluxe | Deluxe | Deluxe | Deluxe |
| Automatic moisture control | ● | ● | ● | ● | ● | ● |
| NeverClean™ condenser | ● | ● | ● | ● | ● | ● |
| Freezer Features | | | | | | |
| Factory-installed electronic icemaker | Opt. (IM4) | ● | Opt. (IM4) | ● | Opt. (IM4) | ● |
| Ice 'N Easy trays | 2 | | 1 | | 1 | |
| Ice storage bin | | Ice Bucket | ● | ● | ● | ● |
| Spillproof freezer floor | ● | ● | | | | |
| Wire freezer compartment shelves | 1 FW (2 pos.) | 1 FW (2 pos.) | 1 Adj. F/W | 1 Adj. F/W | 1 Adj. F/W | 1 Adj. F/W |
| Fixed door shelves | 2 | 2 | 2 Fixed | 2 Fixed | 2 Fixed | 2 Fixed |
| Exterior | | | | | | |
| Color(s) available* | WW, CC | WW, CC | WW, CC | WW, CC | WW, CC | WW, CC |
| Door handle(s) | Color-matched | Color-matched | Color-matched | Color-matched | Color-matched | Color-matched |
| Customer installed handles | ● | ● | ● | ● | ● | ● |
| Exterior design | Rounded Doors | Rounded Doors | Rounded Doors | Rounded Doors | Rounded Doors | Rounded Doors |
| Reversible doors | ● | ● | ● | ● | ● | ● |
| Adjustable rollers | Front | Front | Front | Front | Front | Front |
| Weights & Dimensions | | | | | | |
| Height to top of hinge (in.) A | 66-5/8 | 66-5/8 | 68-1/8 | 68-1/8 | 68-1/8 | 68-1/8 |
| Height to top of case (in.) B | 66-1/8 | 66-1/8 | 67-1/2 | 67-1/2 | 67-1/2 | 67-1/2 |
| Height to mid-freezer (in.) | | | | | | |
| Case depth without door (in.) C | 27-1/2 | 27-1/2 | 27-1/2 | 27-1/2 | 25-3/8 | 25-3/8 |
| Case depth less door handle (in.) D | 30-1/4 | 30-1/4 | 30-5/8 | 30-5/8 | 28-1/2 | 28-1/2 |
| Case depth with door handle (in.) E | 32-1/8 | 32-1/8 | 32-3/8 | 32-3/8 | 30-3/8 | 30-3/8 |
| Depth w/fresh food door open 90° (in.) F | 58-1/8 | 58-1/8 | 57-15/16 | 57-15/16 | 55-3/4 | 55-3/4 |
| Width (in.) G | 29-1/2 | 29-1/2 | 29-1/2 | 29-1/2 | 29-1/2 | 29-1/2 |
| Width w/door open 90° less door handle (in.) H | 30 | 30 | 30-3/4 | 30-3/4 | 30-3/4 | 30-3/4 |
| Air clearances Each side (in.) | 1/8 | 1/8 | 1/8 | 1/8 | 1/8 | 1/8 |
| Top (in.) | 1 | 1 | 1 | 1 | 1 | 1 |
| Back (in.) | 1 | 1 | 1 | 1 | 1 | 1 |
| Approx. shipping weight (lbs.) | 201 | 206 | 227 | 227 | 220 | 220 |

*Color(s) available: WW = White on white; CC = Bisque on bisque

ALL MODELS AVAILABLE IN U.S. AND CANADA.

Top-Freezer No-Frost Refrigerator



Total volume and shelf area are calculated by the Association of Home Appliance Manufacturers' standards.



Listed by Underwriters Laboratories

Note: All Top-Freezer No-Frost Right-Hand Refrigerator Doors: As you face the front of the refrigerator, the handle is on your left and the hinges are on your right.
 All Top-Freezer No-Frost Left-Hand Refrigerator Doors: As you face the front of the refrigerator, the handle is on your right and the hinges are on your left.



GE Appliances

General Electric Company
Louisville, Kentucky 40225
GEAppliances.com

GE has a policy of continuous improvement of its products and reserves the right to change materials and specifications without notice.

© 2002 General Electric Company
Pub. No. 2-X112 PC33722