

Use and Care Guide

Refrigerator



Safety Instructions3



Operating Instructions, Tips

Appliance Registration.....	2
Food Storage Suggestions.....	5
Shelves and Storage Drawer.....	4
Temperature Control	3



Care and Cleaning

Behind Refrigerator.....	7
Cleaning—Inside and Outside.....	6
Condenser	7
Defrosting—Fresh Food and Freezer Compartments	6
Defrost Water Pan.....	7
Light Bulb Replacement	7



Problem Solver..... 11

More questions...call
GE Answer Center® 800.626.2000



Preparation

Clearances.....	8
Leveling Legs.....	8
Location	8
Vacation and Moving Precautions	8
Vacuum Break	10



Installation9, 10

Adapter Plug	9
Electrical Requirements.....	9
Extension Cord	9
Grounding.....	9
Reversing the Door Swing.....	10



Consumer Services..... 15

Model and Serial Numbers	2
Repair Service.....	2
Warranty	Back Cover

Models: TDX9 TDX11

GE Quality Product

Part No. 162D3912P005
Pub No. 49-60045

6-99 JR

Printed in Slovenia



HELP US HELP YOU...

Read this guide carefully.

It is intended to help you operate and maintain your new refrigerator properly.

Keep it handy for answers to your questions.

If you don't understand something or need more help, call:

GE Answer Center®

800.626.2000

24 hours a day, 7 days a week

Keep proof of original purchase date (such as your sales slip or cancelled check) with this book to establish the warranty period.

If you received a damaged refrigerator...

Immediately contact the dealer (or builder) that sold you the refrigerator.

Save time and money.

Before you call for service...

Check the Problem Solver. It lists causes of minor operating problems that you can correct yourself.

Write down the model and serial numbers.

You'll find them on a label on the back of the refrigerator.

These numbers are also on the Consumer Product Ownership Registration Card that came with your refrigerator. Before sending in this card, please write these numbers here:

Model Number

Serial Number

Use these numbers in any correspondence or service calls concerning your refrigerator.

IF YOU NEED SERVICE

To obtain service, see the Consumer Services page in the back of this guide.

We're proud of our service and want you to be pleased. If for some reason you are not happy with the service you receive, here are steps to follow for further help.

FIRST, contact the people who serviced your appliance. Explain why you are not pleased. In most cases, this will solve the problem.

NEXT, if you are still not pleased, write all the details—including your phone number—to:

Manager, Consumer Relations
GE Appliances
Appliance Park
Louisville, Kentucky 40225



DANGER! RISK OF CHILD ENTRAPMENT

Proper Disposal of the Refrigerator

Child entrapment and suffocation are not problems of the past. Junked or abandoned refrigerators are still dangerous...even if they will sit for "just a few days." If you are getting rid of your old refrigerator, please follow the instructions below to help prevent accidents.

Before You Throw Away Your Old Refrigerator or Freezer:

- Take off the doors.
- Leave the shelves in place so that children may not easily climb inside.

CFC Disposal

Your old refrigerator has a cooling system that used CFCs (chlorofluorocarbons). CFCs are believed to harm stratospheric ozone.

If you are throwing away your old refrigerator, make sure the CFC refrigerant is removed for proper disposal by a qualified servicer. If you intentionally release this CFC refrigerant you can be subject to fines and imprisonment under provisions of environmental legislation.

IMPORTANT SAFETY INSTRUCTIONS

Read All Instructions Before Using This Appliance.



⚠ WARNING—When using this appliance, always exercise basic safety precautions, including the following:

- **Use this appliance only for its intended purpose** as described in this Use and Care Guide.

- **This refrigerator must be properly installed in accordance with the Installation Instructions before it is used.** See grounding instructions in the Installation section.

- **Never unplug your refrigerator by pulling on the power cord.** Always grip plug firmly and pull straight out from the outlet.

- **Repair or replace immediately all electric service cords that have become frayed or otherwise damaged.** Do not use a cord that shows cracks or abrasion damage along its length or at either the plug or connector end.

- **When moving your refrigerator away from the wall, be careful not to roll over or damage the power cord.**

- **Do not allow children to climb, stand or hang on the shelves in the refrigerator.** They could damage the refrigerator and seriously injure themselves.

- **After your refrigerator is in operation, do not touch the cold surfaces in the freezer compartment, particularly when hands are damp or wet.** Skin may adhere to these extremely cold surfaces.

- **Unplug your refrigerator before cleaning and making repairs. NOTE:** We strongly recommend that any servicing be performed by a qualified individual.

- **Before replacing a burned-out light bulb, the refrigerator should be unplugged in order to avoid contact with a live wire filament. A burned-out light bulb may break when being replaced. NOTE:** Turning the control to the STOP position does not remove power to the light circuit.

- **Do not store or use gasoline or other flammable vapors and liquids in the vicinity of this or any other appliance.**

SAVE THESE INSTRUCTIONS

OPERATING YOUR REFRIGERATOR



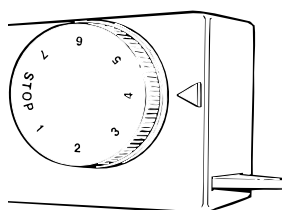
Temperature Control

The temperature control dial has seven settings plus “STOP”.

“1” is the warmest.

“7” is the coldest.

Initially set temperature control dial at **“4”**.



After using the refrigerator, adjust the temperature control if necessary. Turn the dial to the setting that is best suited to your needs. Allow 24 hours for the temperature to stabilize.

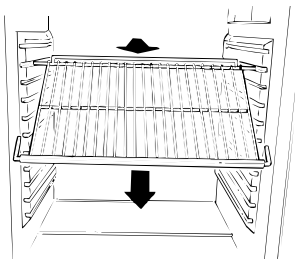
NOTE: Turning the temperature control dial to the **“STOP”** position stops cooling in both compartments—fresh food and freezer.



SHELVES AND STORAGE DRAWER

Multi-Position Shelves

To remove a shelf, remove food from it, lift up the rear of the shelf and pull forward.

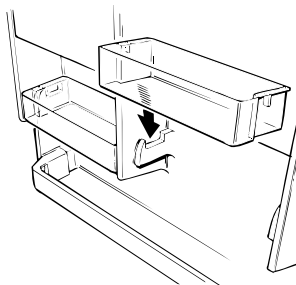


To remove a shelf when the door cannot be opened fully, remove food from it, lift up the rear of the shelf and pull forward and down. Then tilt the shelf and take it out.

Shelf guards on the rear of the shelves in the fresh food compartment help prevent containers from touching the cooling plate. If bowls or similar containers touch the plate, frost could form on the containers and cause partial freezing of their contents. This frost may melt and drip during the defrosting cycle.

Removable Door Bins

Bins below the dairy compartments on the fresh food compartment door can easily be taken from the refrigerator to the food preparation area. They are safe for use in microwave ovens, refrigerators and freezers, and are dishwasher safe.



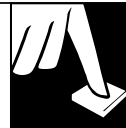
CAUTION: Door bins cannot stand the heat generated in regular ovens, and are not designed for range-top cooking or broiler use. Such use can be hazardous.

Fruit & Vegetable Drawer

The storage drawer at the bottom of the fresh food compartment has been specially designed to help preserve fruits and vegetables.

The drawer and the tempered glass cover above it can usually be pulled straight out for cleaning. To remove the drawer and drawer cover when the door cannot be opened fully, pull the drawer partway out. Reach in, push the glass cover up, tilt it and take it out. Then tilt the drawer and take it out.

FOOD STORAGE SUGGESTIONS



Suggested Storage Times for Meat and Poultry*

Eating quality drops after time shown	DAYS IN REFRIGERATOR AT 35° to 40° F. (2° to 4° C.)	MONTHS IN FREEZER AT 0° F. (-18° C.)
---------------------------------------	---	--

Fresh Meats

Roasts (Beef & Lamb)	3 to 5	6 to 12
Roasts (Pork & Veal)	3 to 5	4 to 8
Steaks (Beef)	3 to 5	6 to 12
Chops (Lamb)	3 to 5	6 to 9
Chops (Pork)	3 to 5	3 to 4
Ground & Stew Meats	1 to 2	3 to 4
Variety Meats	1 to 2	3 to 4
Sausage (Pork)	1 to 2	1 to 2

Processed Meats

Bacon	7	1
Frankfurters	7	1/2
Ham (Whole)	7	1 to 2
Ham (Half)	3 to 5	1 to 2
Ham (Slices)	3	1 to 2
Luncheon Meats	3 to 5	Freezing
Sausage (Smoked)	7	not recom-
Sausage (Dry & Semi-Dry)	14 to 21	mended.

Cooked Meats

Cooked Meats and Meat Dishes	3 to 4	2 to 3
Gravy & Meat Broth	1 to 2	2 to 3

Eating quality drops after time shown	DAYS IN REFRIGERATOR AT 35° to 40° F. (2° to 4° C.)	MONTHS IN FREEZER AT 0° F. (-18° C.)
---------------------------------------	---	--

Fresh Poultry

Chicken & Turkey (Whole)	1 to 2	12
Chicken (Pieces)	1 to 2	9
Turkey (Pieces)	1 to 2	6
Duck & Goose (Whole)	1 to 2	6
Giblets	1 to 2	3

Cooked Poultry

Pieces (Covered with Broth)	1 to 2	6
Pieces (Not Covered)	3 to 4	1
Cooked Poultry Dishes	3 to 4	4 to 6
Fried Chicken	3 to 4	4

(Other than for meats & poultry)

FREEZER

Most fruits and vegetables	8-12 months
Lean fish	6-8 months
Fatty fish, rolls and breads, soups, stew, casseroles	2-3 months
Cakes, pies, sandwiches, leftovers (cooked), ice cream (original carton)	1 month max.

Meats, fish and poultry purchased from the store vary in quality and age; consequently, safe storage time in your refrigerator will vary.

New techniques are constantly being developed. Consult the County Extension Service or your local Utility Company for the latest information on freezing and storing foods.

* U.S. Department of Agriculture

Fresh Food Storage Tips

Vegetables

- Use the vegetable drawer—it has been designed to preserve the natural moisture and freshness of produce.
- Covering vegetables with a moist towel helps maintain crispness.
- As a further aid to freshness, prepackaged vegetables can be stored in their original wrapping.

Unfrozen meats, fish, and poultry:

- Always remove store wrappings.
- Rewrap in foil, plastic wrap or wax paper and refrigerate immediately.

Cheese:

- Wrap well with aluminum foil, wax paper, or put in a plastic bag.
- Carefully wrap to expel air and help prevent mold.
- Store prepackaged cheese in its own wrapping if you wish.

Tips on Freezing Foods

There are three essential requirements for efficient home freezing.

1. **Initial quality.** Freeze only top-quality foods. Freezing retains quality and flavor; it cannot improve quality.

2. **Speed.** The quicker fruits and vegetables are frozen after picking, the better the frozen product will be. You'll save time, too, with less culling and sorting to do.

3. **Proper packaging.** Use food wraps designed especially for freezing.

To freeze meat, fish and poultry, wrap well in freezer-weight foil (or other heavy-duty wrapping material), forming it carefully to the shape of the contents. This expels air. Fold and crimp ends of the package to provide a good, lasting seal. Don't refreeze meat that has been completely thawed; meat, whether raw or cooked, can be frozen successfully only once.

Fine-quality ice cream, with high cream content, will normally require slightly lower temperatures than more "airy" already-packaged brands with low cream content.

- It will be necessary to experiment to determine the freezer compartment location and temperature control setting to keep your ice cream at the right serving temperature.
- The rear of the freezer compartment is slightly colder than the front.

Effervescent drinks should not be stored in the freezer compartment.



CARE AND CLEANING

Outside

The **door handles** can be cleaned with a cloth dampened with a solution of mild liquid dishwashing detergent and water. Dry with a soft cloth. Don't use wax on the door handles.

Keep the finish clean. Wipe with a clean cloth lightly dampened with kitchen appliance detergent. Dry and polish with a clean, soft cloth. Do not wipe the refrigerator with a soiled dishwashing cloth or wet towel. These may leave a residue that can erode the paint. Do not use scouring pads, powdered cleaners, bleach or cleaners containing bleach because these products can scratch and weaken the paint finish.

Protect the paint finish. The finish on the outside of the refrigerator is a high quality, baked-on paint finish. With proper care, it will stay new-looking and rust-free for years. Apply a coat of kitchen/appliance wax when the refrigerator is new and then at least twice a year.

Appliance Polish Wax & Cleaner is available from GE Appliance Service and Parts Centers.

Inside

Inside the fresh food and freezer compartments should be cleaned at least once a year. Unplug the refrigerator before cleaning. If this is not practical, wring excess moisture out of sponge or cloth when cleaning around switches, lights or controls.

Use warm water and baking soda solution—about a tablespoon of baking soda to a quart of water. This both cleans and neutralizes odors. Rinse thoroughly with water and wipe dry.

Other parts of the refrigerator, including door gasket, vegetable drawer, ice trays and all plastic parts, can be cleaned the same way. Do not use cleansing powders or other abrasive cleaners.

To help prevent odors, leave an open box of baking soda in the rear of the refrigerator, on the top shelf. Change the box every three months. An open box of baking soda in the freezer will absorb stale freezer odors.

Do not wash any plastic parts from your refrigerator in your automatic dishwasher.

Defrosting

Fresh Food Compartment

Defrosting of the fresh food compartment takes place automatically every time the refrigerator turns off.

Melted frost water drains from the cooling plate into a trough below the plate, out the back of the refrigerator, and down into a pan near the bottom of the refrigerator (see Defrost Water Pan section) where it evaporates.

NOTE: If heavy frost forms on the cooling plate, adjust temperature control to a lower setting. Be sure bowls or similar objects are not touching the cooling plate. If they are, frost may form on them and drip into fresh food compartment during defrosting.

Defrosting

Freezer Compartment

- **Defrost freezer compartment when frost becomes 1/4" to 1/2" thick in any area of the freezer.**
- **It may be necessary to defrost the freezer compartment frequently if the freezer is used often and/or there is high humidity.**
- **Do not use any electrical device or sharp instrument in defrosting your freezer compartment.**

To defrost freezer compartment:

1. Turn the temperature control to "7" several hours before defrosting.
2. Remove contents from freezer compartment and turn temperature control to the "STOP" position. Temperature control must remain at the "STOP" position and freezer compartment door must stay open.

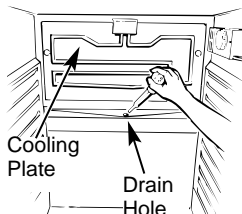
To reduce the amount of thawing of frozen food while defrosting the freezer compartment, store the food in a picnic cooler or other insulated container.

3. Use a plastic scraper to loosen and remove frost from the ceiling and walls of the freezer compartment as the frost begins to thaw. Do not use a sharp or pointed instrument to remove frost—its use may result in damage to the refrigerator system. To speed frost removal, place pans of hot tap water in the freezer compartment.
4. Sponge up defrost water as it collects in bottom of freezer compartment. Place a large folded bath towel at the front of the freezer compartment to soak up water and prevent it from running down the front of the refrigerator.
5. After defrosting is completed, turn temperature control to desired setting and return food to freezer compartment.



Drain Opening in Fresh Food Compartment

To remove ice from the cooling plate turn the control to a lower number. During yearly cleaning, flush a solution of baking soda (one teaspoon) and two cups of hot (not boiling) water through the drain line with the help of a meat baster. This will help eliminate odor and reduce the likelihood of a clogged drain.

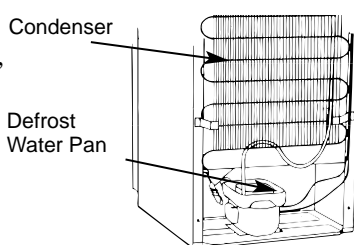


Behind Refrigerator

Care should be taken in moving your refrigerator away from the wall. All types of floor coverings can be damaged, particularly cushioned coverings and those with embossed surfaces. When pushing the refrigerator back make sure you don't roll over the power cord.

Condenser

For most efficient operation, the condenser, located on the back of the refrigerator, should be cleaned at least once a year. Pull the refrigerator away from the wall and use a non-metallic brush or a vacuum cleaner attachment to remove any accumulated dust.

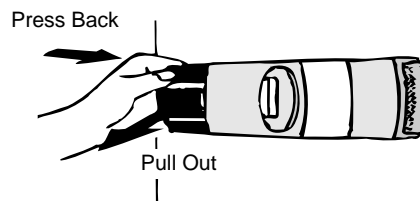


Defrost Water Pan

The pan located below the condenser should be cleaned at least once a year. **DO NOT REMOVE THE PAN.** Move the refrigerator out from the wall as far as necessary, and unplug the power cord from the wall outlet before cleaning the pan. Use a clean cloth or sponge dampened in warm water and baking soda solution—one tablespoon of baking soda to a quart of water. **Do not use** cleansing powders, abrasive cleaners, bleach or cleaners containing chlorides.

Light Bulb Replacement

A light bulb and socket are located next to the temperature control. To replace the bulb, first unplug the refrigerator. Next, remove the light by pressing back on the cover then pulling it out. Replacement bulb (Cat. No. WR23X5173) is available from GE Appliance Service and Parts Centers.





PREPARATION

Location

Do not install the refrigerator where the temperature will be below 60°F. because it will not run often enough to maintain proper temperature.

The refrigerator must be installed on a floor strong enough to support it when fully loaded.

Clearances

Allow the following clearances for ease of installation, door opening and proper air circulation:

Top 2"Back 2"Sides 1/2"

When You Move

Disconnect the power cord from the wall outlet, remove food and defrost refrigerator. Then clean and dry the interior.

Secure all loose items such as ice trays and shelves by taping them securely in place to prevent damage.

Be sure refrigerator stays in upright position during actual moving and in van. Refrigerator must be secured in van to prevent movement. Protect outside of refrigerator with blanket.

When You Go on Vacation

For extended vacations or absences, unplug the refrigerator. Clean the interior with a baking soda solution of one tablespoon of soda to one quart of water. Wipe dry. To prevent odors, leave an open box of baking soda in the refrigerator. Leave doors open.

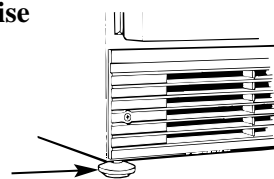
For shorter vacations, remove perishable foods and leave the control at regular setting. However, if room temperature is expected to drop below 60°F. follow the same instructions as for extended vacations.

Leveling Legs

Leveling legs near each front corner of the refrigerator are adjustable. They firmly position the refrigerator and prevent it from moving when the doors are opened. Leveling legs should be set so the front of the refrigerator is raised just enough that the doors close easily when opened about halfway.

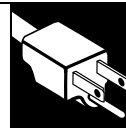
Turn the leveling legs **clockwise** to raise the refrigerator, **counterclockwise** to lower it.

Turn clockwise to raise,
counterclockwise to lower.



INSTALLATION REQUIREMENTS

IMPORTANT...Please read carefully



Reversing the Door Swing

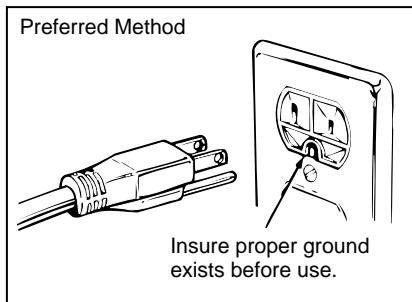
Preparation

Installation

How to Connect Electricity

For personal safety, this appliance must be properly grounded.

The power cord of this appliance is equipped with a three-prong (grounding) plug which mates with a standard three-prong (grounding) wall outlet to minimize the possibility of electric shock hazard from this appliance.



Have wall outlet and circuit checked by a qualified electrician to make sure the outlet is properly grounded.

Where a standard two-prong wall outlet is encountered, it is your personal responsibility and obligation to have it replaced with a properly grounded three-prong wall outlet.

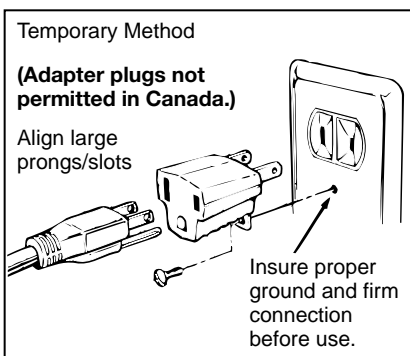
DO NOT, UNDER ANY CIRCUMSTANCES, CUT OR REMOVE THE THIRD (GROUND) PRONG FROM THE POWER CORD.

Use of Adapter Plug

Because of potential safety hazards under certain conditions, we strongly recommend against use of an adapter plug. However, if you still elect to use an adapter, where local codes permit, a

TEMPORARY CONNECTION may be made to a properly grounded two-prong wall outlet by use of a UL listed adapter available at most local hardware stores.

The larger slot in the adapter must be aligned with the larger slot in the wall outlet to provide proper polarity in the connection of the power cord.



CAUTION: Attaching adapter ground terminal to wall outlet cover screw does not ground the appliance unless cover screw is metal, and not insulated, and wall outlet is grounded through house wiring. You should have the circuit checked by a qualified electrician to make sure the outlet is properly grounded.

When disconnecting the power cord from the adapter, always hold the adapter with one hand. If this is not done, the adapter ground terminal is very likely to break with repeated use.

Should the adapter ground terminal break, DO NOT USE the appliance until a proper ground has been established.

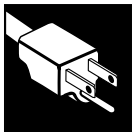
Use of Extension Cords

Because of potential safety hazards under certain conditions, we strongly recommend against the use of an extension cord. However, if you still elect to use an extension cord, it is absolutely necessary that it be a UL listed 3-wire grounding type appliance extension cord having a grounding type plug and outlet and that the electrical rating of the cord be 15 amperes (minimum) and 120 volts.

Electrical Requirements

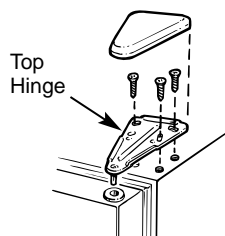
The refrigerator should always be plugged into its own individual electrical outlet which has a voltage rating that matches the plate.

This provides the best performance and also prevents overloading house wiring circuits which could cause a fire hazard from overheated wires.



REVERSING THE DOOR SWING

1. Unplug the refrigerator and remove all items including shelves and bins.
2. Remove the top hinge cover and hinge and set them aside.

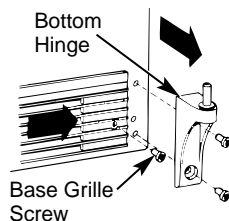


3. Open the freezer door slightly and lift it off.
4. Lay the refrigerator on carpet or on a blanket on its RIGHT SIDE.



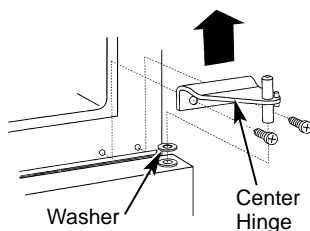
5. Turn the leveling legs clockwise until they are as far down as possible without removing.

6. Remove the two screws from base grille and remove grille.
7. Remove the bottom hinge.

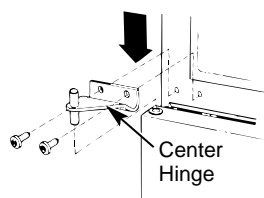


8. Open the fresh food door slightly and lift it off.

9. Remove the center hinge and discard the washer. The washer is needed only for shipping.



10. Assemble the center hinge on the left side.
NOTE: The center hinge must be turned over as shown when mounted on the opposite side.



11. Slide the top socket of the fresh food door onto the center hinge pin and close the door.

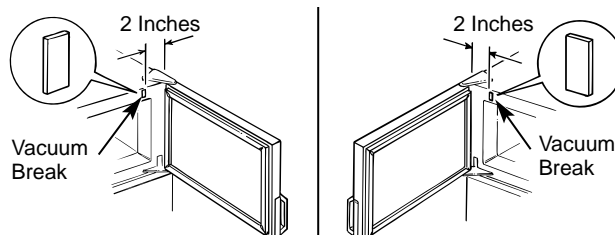
12. Assemble the bottom hinge on the left leg.

13. Replace the base grille.

14. Turn the leveling legs counterclockwise and stand the refrigerator upright.

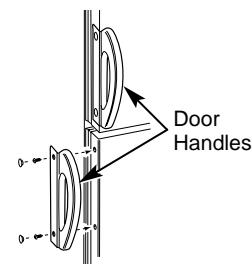
15. Lower the bottom socket of the freezer door onto the center hinge pin and close the door.

16. Fit the top hinge pin into the socket at the top of the freezer door, tighten the screws and replace the hinge cover.



17. Move the vacuum break, if there is one on this model. Carefully peel it from its original location and install it on the other side. The vacuum break makes the door easier to open (part WR02X8905). Apply it to the flat metal surface at the top front of the refrigerator case. It should be about 2 inches from the edge on the hinge side of the refrigerator.

18. Remove the door handles by removing the screws under 2 plastic buttons. Install the handles on the opposite side.



QUESTIONS? USE THIS PROBLEM SOLVER



PROBLEM	POSSIBLE CAUSE
REFRIGERATOR DOES NOT OPERATE	<ul style="list-style-type: none"> • Temperature control dial set at the “STOP” position. • If interior light is not on, refrigerator may not be plugged in at wall outlet. If plug is secure and the refrigerator still fails to operate, plug a lamp or a small appliance into the same outlet to determine if there is a tripped circuit breaker or burned out fuse.
MOTOR OPERATES FOR LONG PERIODS	<ul style="list-style-type: none"> • Normal when refrigerator is first delivered to your home—usually requires 24 hours to completely cool down. • Large amounts of food placed in refrigerator to be cooled. • Hot weather—frequent door openings or door has been left open. • Temperature control is set too cold. Refer to the instructions in the Operating your Refrigerator section.
MOTOR STARTS & STOPS FREQUENTLY	<ul style="list-style-type: none"> • Temperature control starts and stops motor to maintain even temperatures.
VIBRATION OR RATTLING	<ul style="list-style-type: none"> • If refrigerator vibrates, more than likely it is not resting solidly on the floor and front leveling legs need adjusting or floor is weak or uneven. Refer to the Preparation section. • If dishes vibrate on shelves, try moving them. Slight vibration is normal.
FOODS DRY OUT	<ul style="list-style-type: none"> • Foods should be covered, wrapped or sealed properly.
FROST OR ICE CRYSTALS ON FROZEN FOOD	<ul style="list-style-type: none"> • Normal in this type of refrigerator.
FRESH FOOD OR FREEZER COMPARTMENT TEMPERATURE TOO WARM	<ul style="list-style-type: none"> • Temperature control not set cold enough. Refer to the instructions in the Operating your Refrigerator section. • Hot weather—frequent door openings. • Package may be holding door open or door left open for long time.
SLOW ICE CUBE FREEZING	<ul style="list-style-type: none"> • Trays not placed on freezer compartment floor. • Door may have been left ajar. • Set temperature control to a higher number.
ICE CUBES HAVE ODOR/TASTE	<ul style="list-style-type: none"> • Unsealed packages may be transmitting odor/taste to ice cubes. Discard old ice.
MOISTURE FORMS ON OUTSIDE OF REFRIGERATOR	<ul style="list-style-type: none"> • Not unusual during period of high humidity.
MOISTURE COLLECTS INSIDE	<ul style="list-style-type: none"> • Too frequent and too long door openings, or door left open or ajar. • In humid weather, air carries moisture into refrigerator when door is opened. • Moisture on cooling coil occurs during defrosting. See Care and Cleaning.
REFRIGERATOR HAS ODOR	<ul style="list-style-type: none"> • Foods with strong odors should be tightly covered. • Check for spoiled food. • Interior needs cleaning. Refer to Care and Cleaning. Keep open box of baking soda in refrigerator; replace every three months.
INTERIOR LIGHT DOES NOT LIGHT	<ul style="list-style-type: none"> • No power at outlet. • Light bulb needs replacing.
ICE FORMS ON THE COOLING PLATE	<ul style="list-style-type: none"> • Turn the temperature control to a lower number.
DOOR IS HARD TO OPEN	<ul style="list-style-type: none"> • Install a vacuum break (Part No. WR02X8905).

If you need more help...call, toll free: GE Answer Center®, 800.626.2000, consumer information service

NOTES

NOTES

NOTES

We'll Be There

With the purchase of your new GE appliance, receive the assurance that if you ever need information or assistance from GE, we'll be there. All you have to do is call—toll-free!

GE Answer Center®

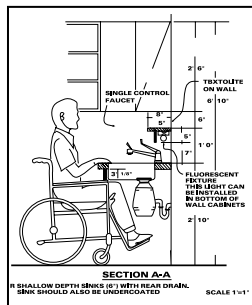
800.626.2000

Whatever your question about any GE major appliance, GE Answer Center® information service is available to help. Your call—and your question—will be answered promptly and courteously. And you can call any time. GE Answer Center® service is open 24 hours a day, 7 days a week.

In-Home Repair Service

800-GE-CARES (800-432-2737)

A GE consumer service professional will provide expert repair service, scheduled at a time that's convenient for you. Many GE Consumer Service company-operated locations offer you service today or tomorrow, or at your convenience (7:00 a.m. to 7:00 p.m. weekdays, 9:00 a.m. to 2:00 p.m. Saturdays). Our factory-trained technicians know your appliance inside and out—so most repairs can be handled in just one visit.



For Customers With Special Needs...

800.626.2000

Upon request, GE will provide Braille controls for a variety of GE appliances, and a brochure to assist in planning a barrier-free kitchen for persons with limited mobility. To obtain these items, free of charge, call 800.626.2000.

Consumers with impaired hearing or speech who have access to a TDD or a conventional teletypewriter may call 800-TDD-GEAC (800-833-4322) to request information or service.

Service Contracts

800-626-2224

You can have the secure feeling that GE Consumer Service will still be there after your warranty expires. Purchase a GE contract while your warranty is still in effect and you'll receive a substantial discount. With a multiple-year contract, you're assured of future service at today's prices.

Parts and Accessories

800-626-2002

Individuals qualified to service their own appliances can have parts or accessories sent directly to their home. The GE parts system provides access to over 47,000 parts...and all GE Genuine Renewal Parts are fully warranted. VISA, MasterCard and Discover cards are accepted.

User maintenance instructions contained in this guide cover procedures intended to be performed by any user. Other servicing generally should be referred to qualified service personnel. Caution must be exercised, since improper servicing may cause unsafe operation.

YOUR GENERAL ELECTRIC REFRIGERATOR WARRANTY

Staple sales slip or cancelled check here. Proof of original purchase date is needed to obtain service under warranty.

WHAT IS COVERED

FULL ONE-YEAR WARRANTY

For one year from date of original purchase, we will provide, free of charge, parts and service labor in your home to repair or replace **any part of the refrigerator** that fails because of a manufacturing defect.

FULL FIVE-YEAR WARRANTY

For five years from date of original purchase, we will provide, free of charge, parts and service labor in your home to repair or replace **any part of the sealed refrigerating system** (the compressor, condenser, evaporator and all connecting tubing) that fails because of a manufacturing defect.

This warranty is extended to the original purchaser and any succeeding owner for products purchased for ordinary home use in the 48 mainland states, Hawaii and Washington, D.C. In Alaska the warranty is the same except that it is LIMITED because you must pay to ship the product to the service shop or for the service technician's travel costs to your home.

All warranty service will be provided by GE Appliance Service and Parts Centers or by our authorized Customer Care® servicers during normal working hours.

Should your appliance need service, during warranty period or beyond, call 800-GE-CARES (800-432-2737).

WHAT IS NOT COVERED

- Service trips to your home to teach you how to use the product.

Read your Use and Care material.

If you then have any questions about operating the product, please contact your dealer or our Consumer Affairs office at the address below, or call, toll free:

GE Answer Center®
800.626.2000
consumer information service

- Improper installation.

If you have an installation problem, contact your dealer or installer. You are responsible for providing adequate electrical, plumbing and other connecting facilities.

- Replacement of house fuses or resetting of circuit breakers.

- Failure of the product if it is used for other than its intended purpose or used commercially.

- Damage to product caused by accident, fire, floods or acts of God.

- Loss of food due to spoilage.

WARRANTOR IS NOT RESPONSIBLE FOR CONSEQUENTIAL DAMAGES.

Some states do not allow the exclusion or limitation of incidental or consequential damages, so the above limitation or exclusion may not apply to you. This warranty gives you specific legal rights, and you may also have other rights which vary from state to state. To know what your legal rights are in your state, consult your local or state consumer affairs office or your state's Attorney General.

Warrantor: General Electric Company

**If further help is needed concerning this warranty, write:
Manager—Consumer Affairs, GE Appliances, Louisville, KY 40225**